

Traffic Safety Council

Date: September 29, 2021
Time: 5:00 PM
Location: Online Video Conference

Members

Councillor Chris Fonseca	Ward 3
Councillor John Kovac	Ward 4
Councillor Sue McFadden	Ward 10
Peter Westbrook	Citizen Member (Chair)
Louise Goegan	Citizen Member (Vice-Chair)
Aamira Alvi	Citizen Member
Brad Butt	Citizen Member
Junaid Shah	Citizen Member
Mashkoor Sherwani	Citizen Member
Michael Ogilvie	Citizen Member
Miles Roque	Citizen Member
Muhammad Bhatti	Citizen Member
Sandra Thomson	Citizen Member
Sanjiv Narang	Citizen Member
Sushil Kumra	Citizen Member
Tamara Coulson	Citizen Member
TJ Cieciura	Citizen Member
Trevor Brown	Citizen Member
Robert Crocker	Peel District School Board Trustee
Thomas Thomas	Dufferin-Peel Catholic District School Board Trustee

Participate Virtually and/or via Telephone

Advance registration is required to attend, participate and/or make a comment in the virtual meeting. Questions for Public Question Period are required to be provided to Clerk's staff at least 24 hours in an advance of the meeting. Any materials you wish to show the Committee during your presentation must be provided as an attachment to the email. Links to cloud services will not be accepted. Comments submitted will be considered as public information and entered into public record. Please note the Traffic Safety Council will not be streamed or video posted afterwards.

To register, please email megan.piercey@mississauga.ca and for Residents without access to the internet via computer, smartphone or tablet, can register by calling Megan Piercey at 905-615-3200 ext. 4915 no later than Tuesday, September 28 2021 before 12:00 PM. You will be provided with directions on how to participate from Clerks' staff.

1. CALL TO ORDER
2. APPROVAL OF AGENDA
3. DECLARATION OF CONFLICT OF INTEREST
4. MINUTES OF PREVIOUS MEETING

4.1. Traffic Safety Council Minutes - June 23, 2021

5. DEPUTATIONS

- 5.1. Erica Warsh, Vision Zero Program Lead regarding Vision Zero Action Plan
- 5.2. Laura Zeglen, Active Transportation Coordinator regarding School Program Updates from Active Transportation

6. PUBLIC QUESTION PERIOD - 15 Minute Limit

Public Comments: Advance registration is required to participate and/or to make comments in the virtual public meeting. Any member of the public interested in speaking to an item listed on the agenda must register by calling 905-615-3200 ext. 4915 or by emailing megan.piercey@mississauga.ca by Tuesday, September 28, 2021 before 12:00 PM.

Pursuant to Section 42 of the Council Procedure By-law 0139-2013, as amended:

Traffic Safety Council may grant permission to a member of the public to ask a question of Traffic Safety Council, with the following provisions:

1. Questions shall be submitted to the Clerk at least 24 hours prior to the meeting;
2. A person is limited to two (2) questions and must pertain specific item on the current agenda and the speaker will state which item the question is related to;
3. The total public question period time is 15 minutes maximum and shall not be extended by the Chair; and
4. Any response not provided at the meeting will be provided in the format of a written response.

7. CONSENT AGENDA

8. MATTERS TO BE CONSIDERED

8.1. Site Inspection Report - St. Marcellinus Secondary School and Mississauga Secondary School (Ward 5)

Site Inspection report for the site inspection conducted on September 16, 2021 at the intersection of Donway Drive and Sombrero Way for the Students attending St. Marcellinus Secondary School and Mississauga Secondary School.

RECOMMENDATION

1. That Transportation and Works be requested to construct a curb cut and landing pad on the north side of Donway Drive to line up with the existing curb cut and landing pad on the southwest corner of Donway Drive and Newcombe Drive.
2. That Transportation and Works be requested to add a zebra marked crosswalk on the west leg of the intersection aligning the southwest curb cut and landing pad with the new curb and landing pad on the north side of Donway Drive.

RECOMMEND APPROVAL

8.2. Site Inspection Report - Ray Underhill Public School (Ward 11)

Site Inspection report for the site inspection conducted on September 21, 2021 at the intersection of Swanhurst Boulevard and Plainsman Road for the students attending Ray Underhill Public School.

RECOMMENDATION

1. That the warrants have not been met for the placement of a school crossing guard at the intersection of Swanhurst Boulevard and Plainsman Road for the students attending Ray Underhill Public School.
2. That Transportation and Works be requested to review the placement of the stop signs on Swanhurst Boulevard and Plainsman Road if the warrants are not met for the implementation of an all-way stop that is currently under review.

RECOMMEND APPROVAL

8.3. Traffic Calming

This matter was considered and adopted by Council on June 30, 2021 and was referred to Traffic Safety Council for information only.

9. SUBCOMMITTEE REPORTS - Nil

10. PARKING ENFORCEMENT REPORT - Nil

11. TRANSPORTATION AND WORKS ACTION ITEMS - Nil

12. OTHER BUSINESS

13. DATE OF NEXT MEETING - October 27, 2021

14. ADJOURNMENT

Traffic Safety Council

Date: June 23, 2021
Time: 5:00 PM
Location: Online Video Conference

Members Present	Councillor Sue McFadden	Ward 10
	Councillor Chris Fonseca	Ward 3
	Peter Westbrook	Citizen Member (Chair)
	Louise Goegan	Citizen Member (Vice-Chair)
	Aamira Alvi	Citizen Member
	Muhammad Bhatti	Citizen Member
	Trevor Brown	Citizen Member
	Brad Butt	Citizen Member
	TJ Cieciora	Citizen Member
	Tamara Coulson	Citizen Member
	Sushil Kumra	Citizen Member
	Sanjiv Narang	Citizen Member
	Michael Ogilvie	Citizen Member
	Miles Roque	Citizen Member
	Junaid Shah	Citizen Member
	Robert Crocker	Peel District School Board Trustee
	Thomas Thomas	Dufferin-Peel Catholic District School Board Trustee
Members Absent	Councillor John Kovac	Ward 4
	Mashkoor Sherwani	Citizen Member
	Sandra Thomson	Citizen Member

Advisory Board/Staff Present

Camille McKay, Manager, Parking Enforcement
 Max Gill, Supervisor, Traffic Operations
 Sheelagh Duffin, Supervisor, Crossing Guards
 Matthew Sweet, Manager, Active Transportation
 Laura Zeglen, Active Transportation Coordinator
 Denna Tallia, Traffic Operations Technologist
 Cst. Jason Watson, Peel Regional Police
 Christopher Tham, Communications Advisor
 Megan Piercey, Legislative Coordinator

1. CALL TO ORDER - 5:00 PM

2. APPROVAL OF AGENDA

Approved (Councillor C. Fonseca)

3. DECLARATION OF CONFLICT OF INTEREST - Nil

4. MINUTES OF PREVIOUS MEETING

4.1 Traffic Safety Council Minutes - March 31, 2021

Approved (T. Cieciura)

5. DEPUTATIONS

5.1 Max Gill, Supervisor, Traffic Operations regarding proposed changes to the City's All-way Stop Policy

Mr. Gill provided a presentation on the all-way stop policy review and spoke to the purpose, technical warrant, considerations, requests, new procedure and next steps. Committee Members engaged in discussion and enquired about traffic volumes, procedures, public education on technical warrants, and public consultation. Mr. Gill responded to questions and Committee Members noted support for the changes to the City's all-way stop policy.

RECOMMENDATION TSC-0017-2021

Moved By S. Kumra

That the deputation by Max Gill, Supervisor, Traffic Operations regarding proposed changes to the City's All-way Stop Policy be received.

Received

5.2 Laura Zeglen, Active Transportation Coordinator regarding the School Streets Pilot Program

Ms. Zeglen provided a presentation on the School Streets Pilot Project and spoke to the project overview, project phases, site selection, community engagement, vision zero and next steps. Committee Members engaged in discussion and enquired about proposed challenges, measuring success, kiss and rides, and set up and tear down of barriers. Ms. Zeglen responded to questions from Committee Members.

RECOMMENDATION TSC-0018-2021

Moved By L. Goegan

1. That the deputation from Laura Zeglen, Active Transportation Coordinator regarding the School Streets Pilot Project be received.
2. That the Traffic Safety Council provide a letter of endorsement regarding the School Streets Pilot Project.

Approved

5.3 Christopher Tham, Communications Advisor regarding the Let's Move Mississauga Campaign Results

Mr. Tham provided a presentation on the Let's Move Mississauga Walk to School Event and spoke to the campaign overview, goals, tactics, cost, measurement, social media comments and overall results. Committee Members noted support for the results of the campaign and thanked the staff that supported the event.

RECOMMENDATION TSC-0019-2021

Moved By B. Butt

That the deputation from Christopher Tham, Communications Advisor regarding the Let's Move Mississauga Campaign Results be received

Received

6. PUBLIC QUESTION PERIOD - 15 Minute Limit - Nil

7. CONSENT AGENDA - Nil

8. MATTERS CONSIDERED

8.1 Email dated June 18, 2021 from Sheelagh Duffin, Supervisor, Crossing Guards regarding Second Line West and Sombrero Way Crossing Guard Location

Ms. Duffin provided a background of the crossing guard location at the intersection of Second Line West and Sombrero Way and recommended that the crossing guard location be moved to the new all way stop intersection at Second Line West and Lamplight Way for the students attending St. Julia Catholic Elementary School.

RECOMMENDATION TSC-0020-2021

Moved By M. Roque

1. That the email dated June 18, 2021 from Sheelagh Duffin, Supervisor, Crossing Guards regarding Second Line West and Sombrero Way Crossing Guard Location be received.
2. That the crossing guard location at the intersection of Second Line West and Sombrero Way be moved to the new all way stop intersection at Second Line West and Lamplight Way for the students attending St. Julia Catholic Elementary School.
3. That the Traffic Safety Council schedule a site inspection at the intersection of Lamplight Way and Second Line West to determine if the warrants are met for the retention of the crossing guard moved from Sombrero Way and Second Line West to Lamplight Way and Second Line West in the fall of 2021 for the the students attending St. Julia Catholic Elementary School.

Approved

9. SUBCOMMITTEE REPORTS

9.1 Louise Goegan, Chair, Walk to School Subcommittee to provide a verbal update on the Walk to School Subcommittee

Ms. Goegan provided an update on the Walk to School Program and spoke to the upcoming relaunches and invitations that were sent to schools that were active in the program prior to the COVID-19 pandemic. Peter Westbrook, Chair advised committee members that a schedule would be distributed in the summer for members to sign-up to assist with the launches/relaunches.

RECOMMENDATION TSC-0021-2021

Moved By M. Ogilvie

That the Walk to School Subcommittee verbal update from Louise Goegan, Chair, Walk to School Subcommittee be received.

Received

10. PARKING ENFORCEMENT REPORT

10.1 Parking Enforcement in School Zone Report - March 2021

No discussion took place on this matter.

RECOMMENDATION TSC-0022-2021

Moved By L. Goegan

That the Parking Enforcement in School Zone Report for March 2021 be received for information.

Received

10.2 Parking Enforcement in School Zone Report - April 2021

No discussion took place on this matter.

RECOMMENDATION TSC-0023-2021

Moved By L. Goegan

That the Parking Enforcement in School Zone Report for April

Received

11. TRANSPORTATION AND WORKS ACTION ITEMS

11.1 Transportation and Works Action Items List - June 2021

Denna Tallia, Traffic Operations Technologist provided a brief update on the current Transportation and Works action items. Councillor McFadden enquired about refreshing the zebra markings on the school crosswalks. Sheelagh Duffin, Supervisor, Crossing Guards advised that the crosswalks are all on a schedule to be re-painted on a regular basis before the school year starts.

RECOMMENDATION TSC-0024-2021

Moved By Councillor S. McFadden

That the Transportation and Works Action Items List for June 2021 be received.

Received

12. OTHER BUSINESS - Nil

13. DATE OF NEXT MEETING - September 29, 2021

14. ADJOURNMENT - 6:06 PM (S. Kumra)

Vision Zero Action Plan

Committee Presentation
2021



Erica Warsh
erica.warsh@mississauga.ca

What is Vision Zero?

- The Vision Zero approach to road safety seeks to eliminate fatalities and serious injuries in our transportation system, because no loss of life is acceptable
- People make mistakes and the transportation system needs to be designed and operated in a way that caters to human error in order to eliminate fatalities and serious injuries
- Prioritizes safety by creating safer roads, slowing speeds, educating people and enforcing laws to support safer behaviour on the roads
- Data driven decision making guides Vision Zero portfolio

The 5 E's of Road Safety

- Evaluation
- Engineering
- Enforcement
 - Empathy
 - Education



VISION ZERO

Street Lighting

Traffic Calming

Cycling Infrastructure

Construction Management

Bus Stop/Terminal Location

Automated Speed Enforcement

Pedestrian Crossovers

At-grade Rail Crossings

Asset Management

Education

Signals

Right of Way Design

Environmental Assessments

Speed Reductions

Winter Maintenance

Pavement Markings

Data Collection/Analysis

On-Street Parking Location

Action Plan Summary

Separated into actions by the 5 E's

- Evaluation
- Engineering
- Enforcement
- Education and Empathy

99 Actions in total, separated in to “currently considered”, “initiated”, “short” (1-2 years) and “medium” (3-5 years)

Audience: Staff, Council, Public

Evaluation

- Collision Report Processing
- Data Management Plan
- Online Dashboard
- Road/Intersection Safety Audits
- Project Follow Up
- Developing a Target for Collision Reduction
- Annual Report to Council

Engineering (part1)

Design

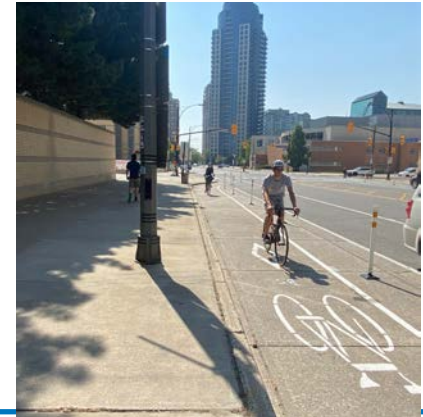
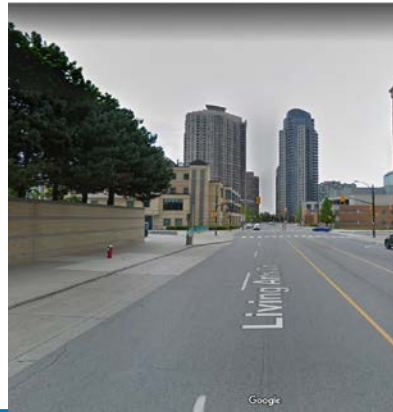
- Lane Widths
- Design Speed
- Remove Channelized Right Turns
- Protected and Dedicated Cycling Infrastructure
- Road Diets

Retrofit/Reconstruction

- Neighbourhood Speeds
- Traffic Calming
- Mobile Speed Boards
- Truck Aprons
- Limit Vehicle Access Points
- Limit new All Way Stops

MiWay

- Limit mid-block bus stops
- Queue Jump Lanes
- Red Plastic Pavement
- Reduce Mixing Zones



Engineering (part 2)

Lighting

- Upgrade Lighting
- Enhanced Lighting at Intersections
- Lighting at Trail Crossings

Signals

- Leading Pedestrian Intervals
- Turn Calming Program
- Mid-block Signalized Pedestrian Crossings

Operations and Maintenance

- Winter Maintenance
- Pot Hole Repairs
- Street Sweeping

Studies, Plans and Policies

- Arterial Speed Management Study
- Construction Management Plans
- Changing Lanes Implementation



Enforcement

Automated Speed Enforcement

- Program Growth
- Expanded Capacity
- Reinvest funds into Road Safety

School Bus Cameras

Red Light Cameras

Partnerships with Peel Regional Police



Education and Empathy

Education and Engagement Strategy
Cohesive Campaigns and Signage
School Travel Programs
New Infrastructure/Road Safety Project Communications
Road Safety Public Survey
Vision Zero Memorial

Equity

Often communities most in need are also least likely to report collisions, injuries or other serious concerns.



Next Steps

Present to other Committees for feedback

Work with graphic designer to finalize document

Final round of feedback from staff

Present to General Committee in mid-late fall

Thank You!

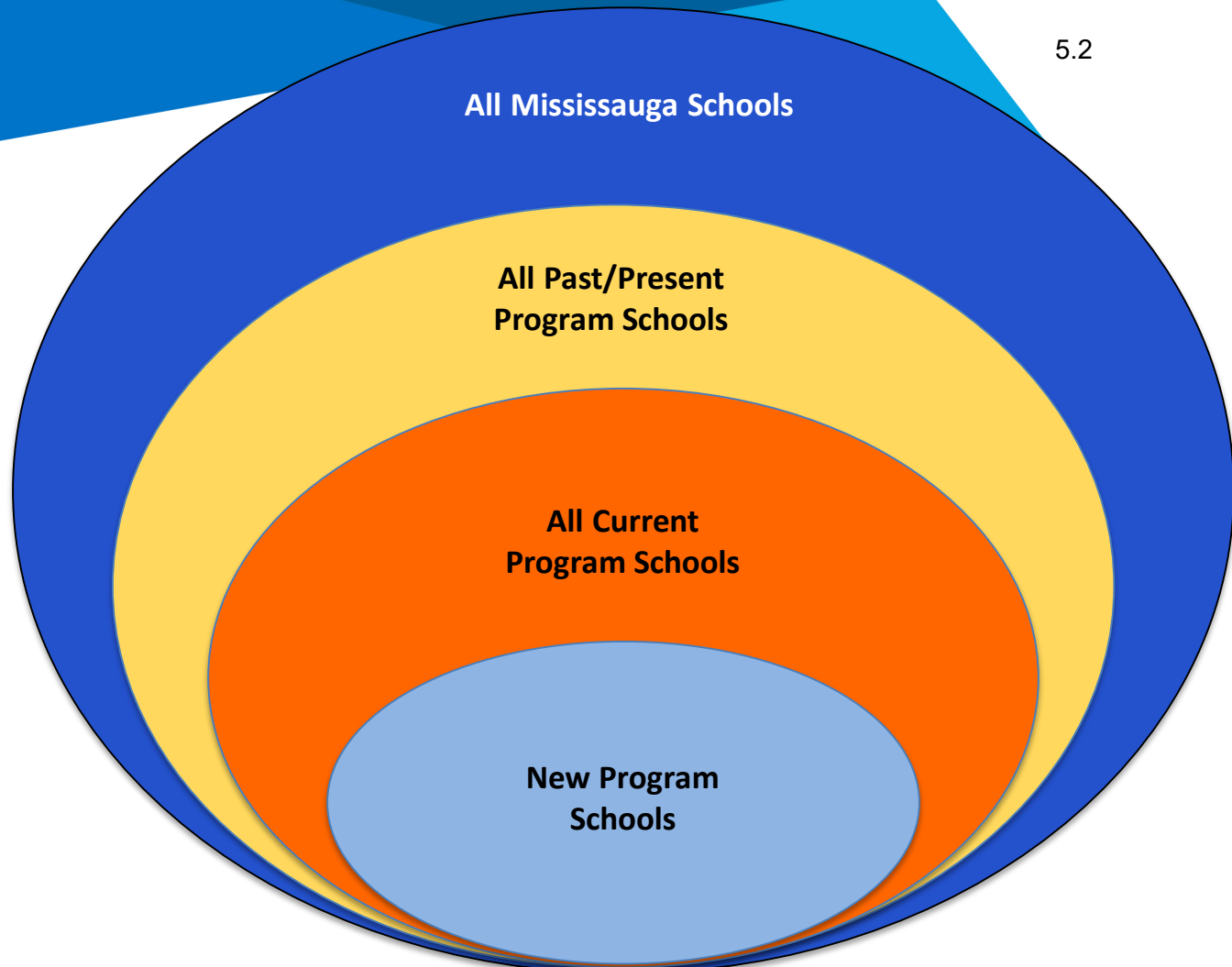
Erica Warsh
Vision Zero Program Lead



School Programs: Updates from Active Transportation

Presentation to Traffic Safety Council
September 29, 2021

School Walking Routes Program



All Schools: Final Design for Program Logo



**Mississauga School
Walking Routes Program**
Let's Walk and Roll to School!

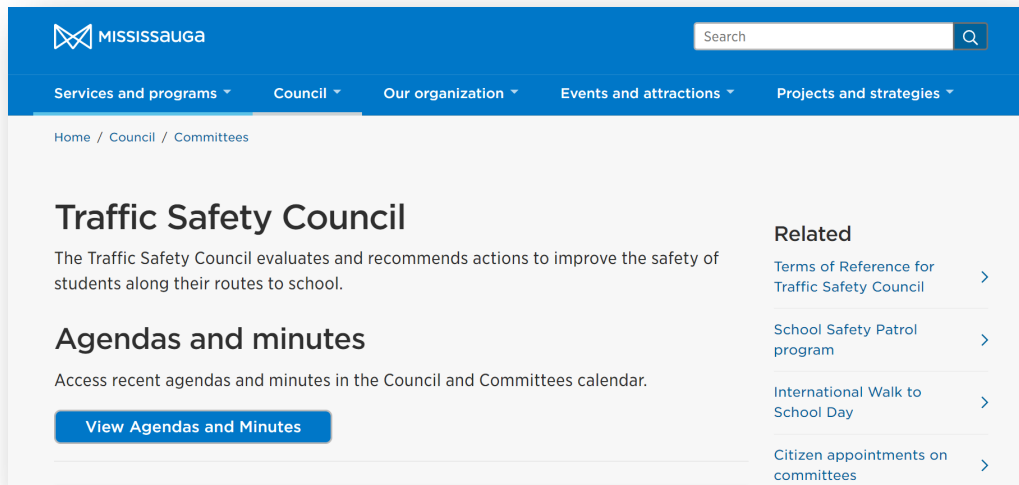
All Schools: Walk to School Month Campaign

- Ready to Launch October 1!
- Campaign to Include:
 - Social media + Paid social media ad
 - Timing to be coordinated with Road Safety Committee's "Pedestrian Safety Month" campaign
 - Digital sign boards throughout the month of October
 - Website
 - Certificates
 - Mobile signs



All Schools: Website

- Still in discussion
- Program Description
- Central place to display program resources and links to external related resources



Past/Present Program Schools: Traffic Safety Times

- First issue sent out to all past program schools this September
- Future editions (recommended):
 - January
 - April
 - Contributions from TSC members welcome/encouraged!



Traffic Safety Times

5.2

Back to School Edition, September 2021

A newsletter for the Mississauga School Walking Routes Program

Can you find these Signs in your Community?

If you are receiving this newsletter, your school is a participant in the Mississauga School Walking Routes Program!

This program first started in 2008 with a single school, St Raymond. Citizen volunteers from the Traffic Safety Council partnered with City staff and local school communities to map out popular routes to school, then mark the routes with these signs for families to walk and roll together.



Rethinking your Journey to School

While walking to school can help decrease traffic congestion and improve safety for students, active school travel also provides a great opportunity for some fresh air, exercise and quality time for parents/caregivers and their children.

Think of the following questions you could ask while walking to and from school:

- What will/what did make you smile today?
- Tell me something you know today, but did not know yesterday?
- If you could change something today what would it be?

Since then, the program has expanded to include over 35 schools- including yours! The program includes a "launch" event to celebrate walking and rolling to school. Schools are encouraged to keep up the momentum to promote active school travel, to promote healthy lifestyles, reduce carbon emissions, and foster the building of safer, friendlier communities.

How can I help my school do more to promote walking to school?

A great starting point for ideas is the Ontario Active School Travel website: ontarioactiveschooltravel.ca/

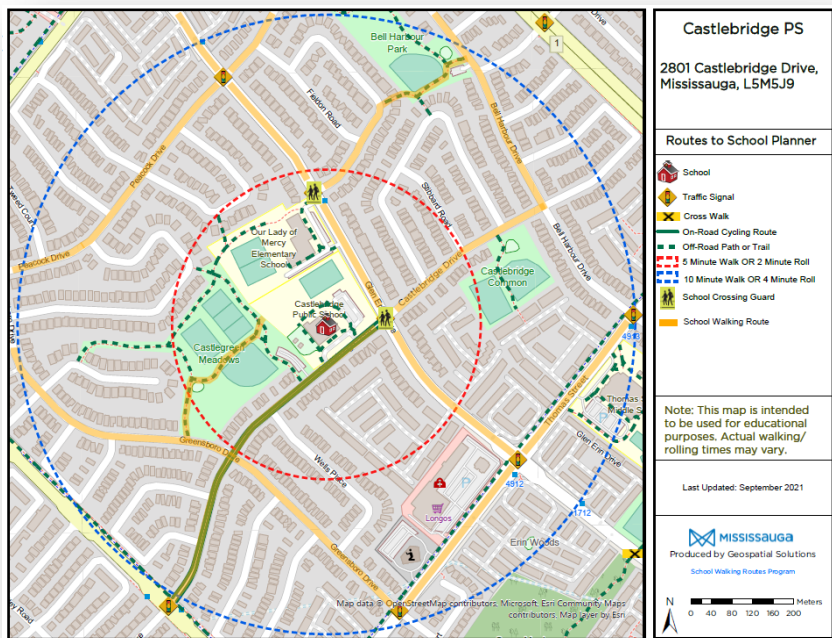
Talk to your principal to share your interest and ideas!

Traffic Safety Word Search

E	V	I	T	C	A	Q	R	R	F
K	U	R	W	G	S	I	G	N	U
E	Q	O	E	E	D	A	L	D	N
S	T	Y	T	E	N	M	E	T	G
U	Z	U	V	O	E	T	R	S	K
O	O	A	B	I	I	T	O	P	L
R	S	L	K	R	R	N	J	K	A
K	Q	Y	T	E	F	A	S	T	W

Words to find: • SIGN • WALK • FUN • ACTIVE • FRIENDS • ROUTE • SAFETY •

Past/Present Program Schools: Walking Routes Maps



Mississauga School Walking Routes Program

Let's Walk and Roll to School!

Why walk or roll to school?

It's Healthy!

- Being active leads to improved physical and mental health.
- Travelling actively to school has been linked to increased alertness and focus at school.

It's Fun!

- Travelling actively to school is a great way to spend time with family and friends.
- Using an active mode of transportation can be a lot more enjoyable than sitting in traffic!

It might be closer than you think!

- Many children can walk 1 kilometer in about 15 minutes or less. Biking takes about half that time.

It's good for adults too!

- Each step you take contributes to the 150 minutes of physical activity recommended for adults each week.

Safety Tips for walking and rolling

Map out a route from your home to school and practice travelling that route with your child.

- Choose routes with sidewalks or paths where you can walk or roll, including the School Walking Routes marked in your community.
- Point out crossing guards, crosswalks, stop signs, landmarks, safety hazards and friends' homes, in case of emergency.

Whatever your travel mode, always follow the rules of the road:

- Obey all traffic signals/signs and trail signs.
- Avoid crossing the street midblock, and never cross between parked or stopped vehicles.
- Practice extra caution when crossing driveways.

What if we live too far from school to walk or roll?

- If your child takes the school bus, try walking to the bus stop instead of driving.
- If your child does not take the school bus, try parking 5 or 10 minutes away from the school, and walk or roll the rest of the way. You'll avoid traffic and get some exercise, too!

Use the map created for your neighbourhood to plan an active route to school!

Current Program Schools: Participant Recap

- 9 schools have expressed interest in the program this year; will be split between Fall/Winter and Winter/Spring intakes
 - 8 repeat schools; 1 new school
- For future discussion:
 - How should we prioritize schools for participation in this program in the future?



Current Program Schools: Activities

- First “Relaunch” of the year this morning at Castlebridge PS (Ward 9)
 - Oscar Peterson (Ward 10) on October 6
 - Champlain Trail PS (Ward 5) on October 21
- Handheld signs designed for relaunch/launch events for volunteers




You're
Rocking
the
Walking!

Current Program Schools: Activities

- All Schools:
 - Launch/relaunch events
 - Sharing of resources for schools to promote active school travel
 - Schools get to choose additional optional activities to support Education and Encouragement of active school travel
- For future discussion:
 - What additional surveys/information do we want to gather from schools (if any)?

5.2



Mississauga School
Walking Routes Program
Let's Walk and Roll to School!

Support and Resources for your School:

Signed Walking Routes to Your School

- ☐ Based on feedback from your school community
- ☐ Signs mark the way and alert drivers to watch for children travelling to school

Community Map of School Walking Routes

- ☐ Custom map of your school walking routes to share with your school community

Launch Event

- ☐ A celebration of walking and wheeling to school
- ☐ T-shirts for staff and volunteers
- ☐ Giveaways for students and families who walk or wheel

Program Support for Active School Travel Activities (Choose up to 4)

- ☐ Classroom Education Programs (Recommended)
- ☐ Community Storytelling Walk
- ☐ Active School Travel Celebration Event
- ☐ EcoSchools Program Support
- ☐ Information Booth or Presentation at School Event (In Person or Virtual)
- ☐ Other Active School Travel Related Activity of Your Choice

Resources to Support Ongoing Programming at Your School

- ☐ Communications Materials
- ☐ Activity Ideas and Resources

mississauga.ca/activetransport

 Traffic Safety
Council

New Program Schools: Activities

- New schools only:
 - Surveys, Walkabout, Install Signs to mark routes

5.2



Mississauga School Walking Routes Program

Let's Walk and Roll to School!

Support and Resources for your School:

Signed Walking Routes to Your School

- ☐ Based on feedback from your school community
- ☐ Signs mark the way and alert drivers to watch for children travelling to school

Community Map of School Walking Routes

- ☐ Custom map of your school walking routes to share with your school community

Launch Event

- ☐ A celebration of walking and wheeling to school
- ☐ T-shirts for staff and volunteers
- ☐ Giveaways for students and families who walk or wheel

Program Support for Active School Travel Activities (Choose up to 4)

- ☐ Classroom Education Programs (Recommended)
- ☐ Community Storytelling Walk
- ☐ Active School Travel Celebration Event
- ☐ EcoSchools Program Support
- ☐ Information Booth or Presentation at School Event (In Person or Virtual)
- ☐ Other Active School Travel Related Activity of Your Choice

Resources to Support Ongoing Programming at Your School

- ☐ Communications Materials
- ☐ Activity Ideas and Resources

School Streets Pilot

- To Launch Spring 2022 at 3 sites; 3 sites have been shortlisted but not confirmed
- This Fall, we will begin outreach and engagement with local advisory committees for each site
- **We need volunteers!**



**Here's to an active,
safe and healthy
school year ahead!**

Laura Zeglen

Active Transportation
Coordinator

City of Mississauga

Laura.Zeglen@mississauga.ca

905-615-3200 ext 8627



Site Inspection Report

Corporate Services
Office of the City Clerk

Site					
School:	St. Marcellinus Secondary School		Address:	730 Courtneypark Drive West Mississauga, ON L5W 1L9	
Student Population		French Immersion Population	No. of Large Buses	No. of Small Buses	School Times
1760		0	10	8	WTS <input checked="" type="checkbox"/> <input type="radio"/> Yes <input checked="" type="radio"/> No
			No. of Students on the Bus	No. of Students on the Bus	
			299	28	
School:	Mississauga Secondary School		Address:	550 Courtneypark Drive West Mississauga, ON L5W 1L9	
Student Population		French Immersion Population	No. of Large Buses	No. of Small Buses	School Times
1086		0	11	12	8:10 AM
			No. of Students on the Bus	No. of Students on the Bus	WTS <input checked="" type="checkbox"/> <input type="radio"/> Yes <input checked="" type="radio"/> No
			296	28	
Location: (Please identify the location with reference or nearest intersection. Indicate nearest school and address)					
Donway Drive to Sombrero Way					
Proximity to School					
<input type="checkbox"/> in front of <input checked="" type="checkbox"/> within 1.9 km feet/metres					
Accident History (during school times) Yes <input type="radio"/> No <input type="radio"/> Comments:					
Date of Inspection:		Inspection Time:		Requested By:	
2021 09 16		7:40 AM <input type="radio"/> PM <input type="radio"/>		STOPR	
Prepared By:			Request For:		
Peter Westbrook/Sheelagh Duffin			Review Walking Route-pedestrian bridge over 401		

Observers					
File Number:	File Number:		Ward:		
RT.10	RT.10		Ward 5		
Observed By:	P. Westbrook		<input checked="" type="checkbox"/> AM	<input type="checkbox"/> PM	<input type="checkbox"/> AM & PM
Observed By:	D. Forde (STOPR)		<input checked="" type="checkbox"/> AM	<input type="checkbox"/> PM	<input type="checkbox"/> AM & PM
Observed By:	S. Duffin		<input checked="" type="checkbox"/> AM	<input type="checkbox"/> PM	<input type="checkbox"/> AM & PM
Observed By:			<input type="checkbox"/> AM	<input type="checkbox"/> PM	<input type="checkbox"/> AM & PM
Observed By:			<input type="checkbox"/> AM	<input type="checkbox"/> PM	<input type="checkbox"/> AM & PM
Observed By:			<input type="checkbox"/> AM	<input type="checkbox"/> PM	<input type="checkbox"/> AM & PM

Site Conditions					
School Signs:	<input type="checkbox"/> School Area Signs <input type="checkbox"/> School Crossing Signs <input type="checkbox"/> Parking/Stopping Prohibition				
Posted Speed Limit:	<input type="checkbox"/> 40 km/hr <input type="checkbox"/> 50 km/hr <input type="checkbox"/> 60 km/hr <input type="checkbox"/> Other:				
Visibility of Crossing Pedestrians:	<input type="checkbox"/> Poor <input type="checkbox"/> Fair <input checked="" type="checkbox"/> Good Comments:				
Sight Obstructions:	<input type="checkbox"/> Hedges <input type="checkbox"/> Trees <input type="checkbox"/> Fences <input type="checkbox"/> Bus Shelter <input type="checkbox"/> Newspaper Boxes <input type="checkbox"/> Other (Specify):				
Road Grade:	<input type="checkbox"/> Flat <input checked="" type="checkbox"/> Incline <input checked="" type="checkbox"/> Decline bridge access				
Road Geometrics:	<input checked="" type="checkbox"/> Straight <input type="checkbox"/> Curved Comments:				
Road Width:	Curb to Curb:	No. of Bike Lanes	No. of Through Lanes	No. of Turning Lanes	
Leg: <input type="checkbox"/> N <input type="checkbox"/> S <input type="checkbox"/> E <input type="checkbox"/> W	feet/metres	1			
Road Width:	Curb to Curb:	No. of Bike Lanes	No. of Through Lanes	No. of Turning Lanes	
Leg: <input type="checkbox"/> N <input type="checkbox"/> S <input type="checkbox"/> E <input type="checkbox"/> W	feet/metres				
Road Conditions:	AM: <input checked="" type="checkbox"/> Dry <input type="checkbox"/> Wet <input type="checkbox"/> Snow Covered <input type="checkbox"/> Ice PM: <input type="checkbox"/> Dry <input type="checkbox"/> Wet <input type="checkbox"/> Snow Covered <input type="checkbox"/> Ice				
Sidewalks:	<input type="checkbox"/> Not Present <input type="checkbox"/> North <input type="checkbox"/> South <input type="checkbox"/> East <input type="checkbox"/> West				
Route Survey:	<input type="checkbox"/> Shopping Area <input type="checkbox"/> Construction <input type="checkbox"/> Driveway <input type="checkbox"/> Parked Vehicle(s) <input type="checkbox"/> Transit Bus Stop <input type="checkbox"/> Underpass Within feet/metres Other (specify):				

Details

Weather Conditions: AM: ☒ Dry ☒ Sunny ☐ Rain ☐ Snow Temperature: 17 C Other:
 PM: ☐ Dry ☐ Sunny ☐ Rain ☐ Snow Temperature: Other:

Type of Crossing: ☐ 4 Way Intersection ☐ 3 Way Intersection ☐ Midblock (i.e., not an intersection)

Type of Control: ☐ Traffic Lights ☐ Yield Signs ☒ No Control ☐ Adequate Control
☐ Stop Signs (Traffic is stopped on one street only) ☐ All Way Stop (Traffic is stopped in all directions)

Crossing Guard Warrant Survey

Location:

☐ Safe Gap Time Safe Gap Time Calculation (if applicable): $\left(\frac{W}{3.5} + 4 \right)$ = sec.
☐ Signalized Intersection Turning Traffic Count

Morning Intervals

# of Peds	Time (AM)	Leg: <input type="checkbox"/> N <input type="checkbox"/> S <input type="checkbox"/> E <input type="checkbox"/> W	# of Gaps
<input type="text"/>	7:30 - 7:35	<input type="text"/>	<input type="text"/>
<input type="text"/>	7:35 - 7:40	<input type="text"/>	<input type="text"/>
<input type="text"/>	7:40 - 7:45	<input type="text"/>	<input type="text"/>
<input type="text"/>	7:45 - 7:50	<input type="text"/>	<input type="text"/>
<input type="text"/>	7:50 - 7:55	<input type="text"/>	<input type="text"/>
<input type="text"/>	7:55 - 8:00	<input type="text"/>	<input type="text"/>
<input type="text"/>	8:00 - 8:05	<input type="text"/>	<input type="text"/>
<input type="text"/>	8:05 - 8:10	<input type="text"/>	<input type="text"/>
<input type="text"/>	8:10 - 8:15	<input type="text"/>	<input type="text"/>
<input type="text"/>	8:15 - 8:20	<input type="text"/>	<input type="text"/>
<input type="text"/>	8:20 - 8:25	<input type="text"/>	<input type="text"/>
<input type="text"/>	8:25 - 8:30	<input type="text"/>	<input type="text"/>
<input type="text"/>	8:30 - 8:35	<input type="text"/>	<input type="text"/>
<input type="text"/>	8:35 - 8:40	<input type="text"/>	<input type="text"/>
<input type="text"/>	8:40 - 8:45	<input type="text"/>	<input type="text"/>
<input type="text"/>	8:45 - 8:50	<input type="text"/>	<input type="text"/>
<input type="text"/>	8:50 - 8:55	<input type="text"/>	<input type="text"/>
<input type="text"/>	8:55 - 9:00	<input type="text"/>	<input type="text"/>

Afternoon Intervals

# of Peds	Time (PM)	Leg: <input type="checkbox"/> N <input type="checkbox"/> S <input type="checkbox"/> E <input type="checkbox"/> W	# of Gaps
<input type="text"/>	2:30 - 2:35	<input type="text"/>	<input type="text"/>
<input type="text"/>	2:35 - 2:40	<input type="text"/>	<input type="text"/>
<input type="text"/>	2:40 - 2:45	<input type="text"/>	<input type="text"/>
<input type="text"/>	2:45 - 2:50	<input type="text"/>	<input type="text"/>
<input type="text"/>	2:50 - 2:55	<input type="text"/>	<input type="text"/>
<input type="text"/>	2:55 - 3:00	<input type="text"/>	<input type="text"/>
<input type="text"/>	3:00 - 3:05	<input type="text"/>	<input type="text"/>
<input type="text"/>	3:05 - 3:10	<input type="text"/>	<input type="text"/>
<input type="text"/>	3:10 - 3:15	<input type="text"/>	<input type="text"/>
<input type="text"/>	3:15 - 3:20	<input type="text"/>	<input type="text"/>
<input type="text"/>	3:20 - 3:25	<input type="text"/>	<input type="text"/>
<input type="text"/>	3:25 - 3:30	<input type="text"/>	<input type="text"/>
<input type="text"/>	3:30 - 3:35	<input type="text"/>	<input type="text"/>
<input type="text"/>	3:35 - 3:40	<input type="text"/>	<input type="text"/>
<input type="text"/>	3:40 - 3:45	<input type="text"/>	<input type="text"/>
<input type="text"/>	3:45 - 3:50	<input type="text"/>	<input type="text"/>
<input type="text"/>	3:50 - 3:55	<input type="text"/>	<input type="text"/>
<input type="text"/>	3:55 - 4:00	<input type="text"/>	<input type="text"/>

Observations

Volume of Traffic (see Intersection Plan):

AM: ☐ Heavy ☐ Light ☐ IntermittentPM: ☐ Heavy ☐ Light ☐ Intermittent

Number of Crossing Pedestrians:

AM: North East South West PM: North East South West

Turning Traffic:

AM: ☐ Heavy ☐ Light ☐ IntermittentPM: ☐ Heavy ☐ Light ☐ Intermittent**Traffic Behaviour**AM: ☐ Illegal U-turns ☐ Running Red Light ☐ Speeding ☐ Stopping Non-Compliance ☐ Illegal Stopping ☐ Illegal Parking ☐ OtherPM: ☐ Illegal U-turns ☐ Running Red Light ☐ Speeding ☐ Stopping Non-Compliance ☐ Illegal Stopping ☐ Illegal Parking ☐ Other**Comments/Conflicts**

No zebra marked crosswalk or curb cuts that line up at the access to the bridge over the 401 at Donway Drive and Newcombe Drive, the S/W corner. As well as students crossing south to north here in the am to access the trail and bridge over the 401, some students and parents crossed north to south to access area elementary schools. Sidewalks only on the west side of Newcombe Drive.

Trail and bridge clearly marked with lanes for pedestrians and cyclists.

Offset gates in place at both ends of the bridge.

Bridge well utilized by high school students.

After crossing the bridge, south to north, students use various routes to access the schools. Some cut off and use Jazzy Mews, some use Flute Way and some use Sombrero Way.

Trail and bridge over the 401 function well.

Recommendations

1) That Transportation & Works be requested to construct a curb cut and landing pad on the north side of Donway Drive to line up with the existing curb cut and landing pad on the southwest corner of Donway Drive and Newcombe Drive and that a zebra marked crosswalk be added on the west leg of the intersection aligning the southwest curb cut and landing pad with the new curb cut and landing pad on the north side of Donway Drive.

Site Inspection Report

Corporate Services
Office of the City Clerk

Site	
School: Ray Underhill Public School	Address: 32 Suburban Drive Mississauga, ON L5N 1G6
School Times: 9:10 AM 3:30 PM	WTS: <input checked="" type="checkbox"/> <input type="checkbox"/> Yes <input checked="" type="radio"/> No
Student Population: 286	French Immersion Population: <input type="text"/>
No. of Large Buses: 4	No. of Small Buses: 4
No. of Students on the Bus: 199	No. of Students on the Bus: 14
School: <input type="text"/>	Address: <input type="text"/>
School Times: <input type="text"/> AM <input type="text"/> PM	WTS: <input type="checkbox"/> <input type="radio"/> Yes <input checked="" type="radio"/> No
Student Population: <input type="text"/>	French Immersion Population: <input type="text"/>
No. of Large Buses: <input type="text"/>	No. of Small Buses: <input type="text"/>
No. of Students on the Bus: <input type="text"/>	No. of Students on the Bus: <input type="text"/>
Location: (Please identify the location with reference or nearest intersection. Indicate nearest school and address) Swanhurst Boulevard & Plainsman Road	
Proximity to School: <input type="checkbox"/> in front of <input checked="" type="checkbox"/> within 120 feet/metres	
Accident History (during school times) Yes <input type="radio"/> No <input type="radio"/> Comments: <input type="text"/>	
Date of Inspection: 2021 09 21	Inspection Time: 8:40 AM 3:30 PM
Requested By: Resident Via Councillor	
Prepared By: P. Westbrook	Request For: Implementation of a School Crossing Guard

Observers	
File Number: RT.10	File Number: RT.10
Ward: Ward 11	
Observed By: J. Shah	<input type="checkbox"/> AM <input type="checkbox"/> PM <input checked="" type="checkbox"/> AM & PM
Observed By: W. Yonan	<input checked="" type="checkbox"/> AM <input type="checkbox"/> PM <input type="checkbox"/> AM & PM
Observed By: L. Zeglen	<input checked="" type="checkbox"/> AM <input type="checkbox"/> PM <input type="checkbox"/> AM & PM
Observed By: S. Narang	<input type="checkbox"/> AM <input type="checkbox"/> PM <input checked="" type="checkbox"/> AM & PM
Observed By: P. Westbrook	<input type="checkbox"/> AM <input type="checkbox"/> PM <input checked="" type="checkbox"/> AM & PM
Observed By: <input type="text"/>	<input type="checkbox"/> AM <input type="checkbox"/> PM <input type="checkbox"/> AM & PM

Site Conditions	
School Signs:	<input checked="" type="checkbox"/> School Area Signs <input type="checkbox"/> School Crossing Signs <input type="checkbox"/> Parking/Stopping Prohibition
Posted Speed Limit:	<input checked="" type="checkbox"/> 40 km/hr <input type="checkbox"/> 50 km/hr <input type="checkbox"/> 60 km/hr <input type="checkbox"/> Other: <input type="text"/>
Visibility of Crossing Pedestrians:	<input type="checkbox"/> Poor <input type="checkbox"/> Fair <input checked="" type="checkbox"/> Good Comments: <input type="text"/>
Sight Obstructions:	<input type="checkbox"/> Hedges <input type="checkbox"/> Trees <input type="checkbox"/> Fences <input type="checkbox"/> Bus Shelter <input type="checkbox"/> Newspaper Boxes <input type="checkbox"/> Other (Specify): <input type="text"/>
Road Grade:	<input checked="" type="checkbox"/> Flat <input type="checkbox"/> Incline <input type="checkbox"/> Decline
Road Geometrics:	<input checked="" type="checkbox"/> Straight <input type="checkbox"/> Curved Comments: <input type="text"/>
Road Width: 35 feet	Curb to Curb: <input type="text"/> feet/metres
Leg: <input type="checkbox"/> N <input checked="" type="checkbox"/> S <input type="checkbox"/> E <input type="checkbox"/> W	No. of Bike Lanes: <input type="text"/> No. of Through Lanes: 2 No. of Turning Lanes: <input type="text"/>
Road Width: 35 feet	Curb to Curb: <input type="text"/> feet/metres
Leg: <input type="checkbox"/> N <input type="checkbox"/> S <input checked="" type="checkbox"/> E <input type="checkbox"/> W	No. of Bike Lanes: <input type="text"/> No. of Through Lanes: 2 No. of Turning Lanes: <input type="text"/>
Road Conditions:	AM: <input type="checkbox"/> Dry <input checked="" type="checkbox"/> Wet <input type="checkbox"/> Snow Covered <input type="checkbox"/> Ice PM: <input checked="" type="checkbox"/> Dry <input type="checkbox"/> Wet <input type="checkbox"/> Snow Covered <input type="checkbox"/> Ice
Sidewalks:	<input checked="" type="checkbox"/> Not Present <input type="checkbox"/> North <input type="checkbox"/> South <input type="checkbox"/> East <input type="checkbox"/> West
Route Survey:	<input type="checkbox"/> Shopping Area <input type="checkbox"/> Construction <input type="checkbox"/> Driveway <input type="checkbox"/> Parked Vehicle(s) <input type="checkbox"/> Transit Bus Stop <input type="checkbox"/> Underpass Within <input type="text"/> feet/metres Other (specify): <input type="text"/>

Details

Weather Conditions: AM: ☐ Dry ☐ Sunny ☒ Rain ☐ Snow Temperature: 20 C Other:
 PM: ☒ Dry ☐ Sunny ☐ Rain ☐ Snow Temperature: 21 C Other:

Type of Crossing: ☒ 4 Way Intersection ☐ 3 Way Intersection ☐ Midblock (i.e., not an intersection)

Type of Control: ☐ Traffic Lights ☐ Yield Signs ☐ No Control ☐ Adequate Control
on side streets only ☒ Stop Signs ☐ All Way Stop (Traffic is stopped in all directions)

Crossing Guard Warrant Survey

Location:

☒ Safe Gap Time Safe Gap Time Calculation (if applicable): $\left(\frac{W}{3.5} + 4 \right)$ = sec.
☐ Signalized Intersection Turning Traffic Count

Morning Intervals

# of Peds	Time (AM)	Gaps Leg: <input type="checkbox"/> N <input checked="" type="checkbox"/> S <input type="checkbox"/> E <input type="checkbox"/> W	# of Gaps
<input type="text"/>	7:30 - 7:35	<input type="text"/>	<input type="text"/>
<input type="text"/>	8:35 - 8:40	<input type="text"/>	<input type="text"/>
<input type="text"/>	8:40 - 8:45	212,135,33	26
<input type="text"/>	8:45 - 8:50	no cars,300	21
<input type="text"/>	8:50 - 8:55	48,202,146,46	30
<input type="text"/>	8:55 - 9:00	15,/,41	3
<input type="text" value="//P, /P"/>	9:00 - 9:05	58,/,/,100,150	21
<input type="text" value="/P,/P,3P"/>	9:05 - 9:10	63,218	19
<input type="text"/>	8:10 - 8:15	<input type="text"/>	<input type="text"/>
<input type="text"/>	8:15 - 8:20	<input type="text"/>	<input type="text"/>
<input type="text"/>	8:20 - 8:25	<input type="text"/>	<input type="text"/>
<input type="text"/>	8:25 - 8:30	<input type="text"/>	<input type="text"/>
<input type="text"/>	8:30 - 8:35	<input type="text"/>	<input type="text"/>
<input type="text"/>	8:35 - 8:40	<input type="text"/>	<input type="text"/>
<input type="text"/>	8:40 - 8:45	<input type="text"/>	<input type="text"/>
<input type="text"/>	8:45 - 8:50	<input type="text"/>	<input type="text"/>
<input type="text"/>	8:50 - 8:55	<input type="text"/>	<input type="text"/>
<input type="text"/>	8:55 - 9:00	<input type="text"/>	<input type="text"/>

Afternoon Intervals

# of Peds	Time (PM)	Gaps Leg: <input type="checkbox"/> N <input checked="" type="checkbox"/> S <input type="checkbox"/> E <input type="checkbox"/> W	# of Gaps
<input type="text"/>	2:30 - 2:35	<input type="text"/>	<input type="text"/>
<input type="text"/>	2:35 - 2:40	<input type="text"/>	<input type="text"/>
<input type="text"/>	2:40 - 2:45	<input type="text"/>	<input type="text"/>
<input type="text"/>	2:45 - 2:50	<input type="text"/>	<input type="text"/>
<input type="text"/>	2:50 - 2:55	<input type="text"/>	<input type="text"/>
<input type="text"/>	2:55 - 3:00	<input type="text"/>	<input type="text"/>
<input type="text"/>	3:00 - 3:05	<input type="text"/>	<input type="text"/>
<input type="text"/>	3:05 - 3:10	<input type="text"/>	<input type="text"/>
<input type="text"/>	3:10 - 3:15	<input type="text"/>	<input type="text"/>
<input type="text"/>	3:15 - 3:20	<input type="text"/>	<input type="text"/>
<input type="text"/>	3:20 - 3:25	<input type="text"/>	<input type="text"/>
<input type="text"/>	3:25 - 3:30	<input type="text"/>	<input type="text"/>
<input type="text"/>	3:30 - 3:35	235	16
<input type="text"/>	3:35 - 3:40	68,52,23	8
<input type="text" value="/////"/>	3:40 - 3:45	no cars	<input type="text"/>
<input type="text"/>	3:45 - 3:50	no cars	<input type="text"/>
<input type="text"/>	3:50 - 3:55	no cars	<input type="text"/>
<input type="text"/>	3:55 - 4:00	<input type="text"/>	<input type="text"/>

Morning Intervals			
# of Peds	Time (AM)	Gaps Leg: <input type="checkbox"/> N <input type="checkbox"/> S <input checked="" type="checkbox"/> E <input type="checkbox"/> W	# of Gaps
	7:30 - 7:35		
	7:35 - 7:40		
	7:40 - 7:45	146,119,20,54	22
	7:45 - 7:50	147,38,no cars,120	20
	7:50 - 7:55	30,303	23
	7:55 - 8:00	131,242	26
	8:00 - 8:05	156,108,26	19
	8:05 - 8:10	105	7
	8:10 - 8:15		
	8:15 - 8:20		
	8:20 - 8:25		
	8:25 - 8:30		
	8:30 - 8:35		
	8:35 - 8:40		
	8:40 - 8:45		
	8:45 - 8:50		
	8:50 - 8:55		
	8:55 - 9:00		

Afternoon Intervals			
# of Peds	Time (PM)	Gaps Leg: <input type="checkbox"/> N <input type="checkbox"/> S <input checked="" type="checkbox"/> E <input type="checkbox"/> W	# of Gaps
	2:30 - 2:35		
	2:35 - 2:40		
	2:40 - 2:45		
	2:45 - 2:50		
	2:50 - 2:55		
	2:55 - 3:00		
	3:00 - 3:05		
	3:05 - 3:10		
	3:10 - 3:15		
	3:15 - 3:20		
	3:20 - 3:25		
	3:25 - 3:30		
	3:30 - 3:35	255,20	19
	3:35 - 3:40	50,no cars,250	20
	3:40 - 3:45	300,no cars	21
	3:45 - 3:50	130,170	21
	3:50 - 3:55	17,54,39,no cars,207	20
	3:55 - 4:00		

Observations

Volume of Traffic (see Intersection Plan):

AM: ☐ Heavy ☒ Light ☐ IntermittentPM: ☐ Heavy ☒ Light ☐ Intermittent

Number of Crossing Pedestrians:

AM: North East South West PM: North East South West

Turning Traffic:

AM: ☐ Heavy ☒ Light ☐ IntermittentPM: ☐ Heavy ☒ Light ☐ Intermittent**Traffic Behaviour**AM: ☐ Illegal U-turns ☐ Running Red Light ☐ Speeding ☐ Stopping Non-Compliance ☐ Illegal Stopping ☐ Illegal Parking ☐ OtherPM: ☐ Illegal U-turns ☐ Running Red Light ☐ Speeding ☐ Stopping Non-Compliance ☐ Illegal Stopping ☐ Illegal Parking ☐ Other**Comments/Conflicts**

- Vehicles all stopped at stop signs.
- A number of parents parked on side streets and walked students to school on either side of Suburban Drive.
- No students or traffic up to 5 minutes before the bell.
- Quiet again 5 minutes after the bell.
- Transportation & Works reviewed signage and confirmed appropriate signage in place.

Recommendations

- 1) That the warrants have not been met for the placement of a school crossing guard.
- 2) That Transportation & Works be requested to review the placement of the stop signs on Swanhurst Boulevard and Plainsman Road if the warrants are not met for the implementation of an all-way stop that is currently under review.

City of Mississauga Corporate Report



<p>Date: June 8, 2021</p> <p>To: Chair and Members of General Committee</p> <p>From: Geoff Wright, P.Eng, MBA, Commissioner of Transportation and Works</p>	<p>Originator's files:</p> <hr/> <p>Meeting date: June 23, 2021</p>
---	---

Subject

Traffic Calming - 0443-2021.docx

Recommendation

1. That the report from the Commissioner of Transportation and Works, dated June 8, 2021 entitled "Traffic Calming", be approved.
2. That the report from the Commissioner of Transportation and Works, dated June 8, 2021 and entitled "Traffic Calming" be referred to the Mississauga Traffic Safety Council, the Cycling Advisory Committee and the Mississauga Road Safety Committee for information.

Executive Summary

- Golden Orchard Drive, Cambrett Drive, Paisley Boulevard West and Council Ring Road are roadways that have been identified as locations which would benefit from the installation of traffic calming.
- Ward 3 Special Project funding is being utilized for the implementation of physical traffic calming on Golden Orchard Drive.
- The 2021 Traffic Calming Program Capital budget is being utilized for the implementation of physical traffic calming on the following roadways:
 - Ward 5 - Cambrett Drive; and
 - Ward 7 - Paisley Boulevard West.
- Ward 8 Special Project funding is being utilized for the implementation of physical traffic calming on Council Ring Road.
- No concerns have been raised from emergency services or MiWay regarding the proposed traffic calming measures.

Background

The Traffic Services and Road Safety Section regularly conducts reviews regarding speeding, aggressive driving, and traffic infiltration on City roadways which includes the collection of speed and volume data.

Once a speeding concern is identified, Road Safety staff utilize a number of passive traffic calming techniques to reduce vehicle operating speeds. These passive traffic calming measures can include the implementation of painted edge/centre lines, the use of a speed awareness device and enforcement.

If an ongoing identified concern cannot be resolved through other more passive traffic calming measures, Road Safety staff will evaluate the location against the criteria outlined in the Traffic Calming Policy 10-09-03. If a location does qualify based on the criteria outlined in the policy, it will be prioritized on a list of traffic calming locations.

In consultation with the local Ward Councillors, and based on a prioritized warranted list provided by Road Safety staff, locations within Ward 3, 5, 7 & 8 were identified where Special Project funding and the Traffic Calming Program Capital budget could be utilized. The following traffic calming locations were selected for physical traffic calming measures:

- Ward 3 – Golden Orchard Drive between Willowbank Trail and Rathburn Road East, and between Burnhamthorpe Road East and Bloor Street (Appendix 1)
- Ward 5 – Cambrett Drive between Morning Star Drive and Etude Drive (Appendix 2)
- Ward 7 – Paisley Boulevard West between Pollard Drive and Confederation Parkway (Appendix 3)
- Ward 8 - Council Ring Road between Glen Erin Drive (south leg) and The Collegeway (Appendix 4).

Based on the historical traffic data, and increased desire from the community for physical traffic calming due to the speed limit changes planned as part of the Neighbourhood Speed Limit Project, the following roadways would benefit from the installation of physical traffic calming:

Golden Orchard Drive	Posted Speed (km/h)	85th Percentile Speed (km/h)
Between Greybrook Crescent and Greybrook Crescent	40	52
Between Larny Court and Greybrook Cescent	40	52
Between Bloor Street and Grand Forks Road	40	50

Cambrett Drive	Posted Speed (km/h)	85th Percentile Speed (km/h)
Between Jolliffe Avenue and Shallford Road (south leg)	40	57
Between Drifton Crescent and Shallford Road	40	53

Paisley Boulevard West	Posted Speed (km/h)	85th Percentile Speed (km/h)
Between Huron Park Place and Pollard Drive	40	55
Between Morrison Avenue and Huron Park Place	40	63
Between President Boulevard and Goodison Avenue	40	52
Between Consulate Road and President Boulevard	30	57
Between Kingsberry Crescent and Palisander Avenue	40	53
Between Callum Avenue and Crystalburn Avenue	40	51
Between Mason Heights and Whaley Drive	40	54

Council Ring Road	Posted Speed (km/h)	85th Percentile Speed (km/h)
Between Windjammer Road and Moonee Road	40	57
Between Kings Masting Crescent and Kings Masting Crescent	40	57
Between Mainroyal Street and Kings Masting Crescent	40	55

Comments

Once candidates for the installation of physical traffic calming measures are identified, preliminary plans for the neighbourhood were developed. Staff considered different types of traffic calming devices and overall roadway characteristics to achieve operating speeds, which are consistent with the posted speed limit. These factors include traffic calming type, spacing, layout and impacts the installation of physical traffic calming devices may have on local residents and City services.

Public Consultation

To determine the level of support and to refine the traffic calming plan for the neighbourhood, notification of the proposed projects was sent to area residents. The traffic calming concepts were posted on the Local Councillor's website, City's website and residents were provided the opportunity to provide feedback and discuss issues with Councillor's office and city staff. The results of the virtual public engagement consultations are as follows:

- Golden Orchard Drive – 65% of respondents were supportive of the proposed measures along Golden Orchard Drive. These measures include a raised crosswalk between Burnhamthorpe Road East and Bloor Street and a series of speed cushions between the following roadways:
 - Willowbank Trail and Rathburn Road East, and
 - Burnhamthorpe Road East and Bloor Street.
- Cambrett Drive - 100% of respondents were supportive of the proposed measures along Cambrett Drive. These measures include a series of speed cushions that will be installed between Morning Star Drive and Etude Drive.
- Paisley Boulevard West– 74% of respondents were supportive of the proposed measures along Paisley Boulevard West. These measures include a series of speed cushions that will be installed between Pollard Drive and Confederation Parkway. The

traffic calming between Mavis Road and Confederation Parkway will be included as part of the scheduled resurfacing work.

- Council Ring Road – 68% of respondents were supportive of the proposed measures along Council Ring Road. These measures include a series of speed cushions that will be installed between Glen Erin Drive (south intersection) and The Collegeway.

In consultation with the local Ward Councillors, the decision was made to pursue the installation of physical traffic calming measures on Golden Orchard Drive, Cambrett Drive, Paisley Boulevard West, and Council Ring Road.

Staff provided the revised concept plans to all emergency services and MiWay and no concerns have been raised regarding the proposed traffic calming.

Financial Impact

On May 22nd, 2019 a motion was passed by Council to establish capital projects up to a total amount of \$2 million per ward, to be used at the discretion of each local Councillor for infrastructure projects.

The following traffic calming measure projects are not funded. Funding for these projects will be provided through councillor's special gas tax funding and requested with the June 2021 WIP corporate report:

Project	Estimate	PN#
Golden Orchard Drive	\$65,000	A21199
Council Ring Road	\$60,000	B21199

The estimated cost for the installation of physical traffic calming measures on Cambrett Drive and Paisley Boulevard West is \$135,000 and can be accommodated within the 2021 Traffic Calming Program capital project 21199.

Conclusion

There is sufficient interest from local area residents, as well as support from the Local Ward Councillors, for the implementation of physical traffic calming measures on Golden Orchard Drive, Cambrett Drive, Paisley Boulevard West, and Council Ring Road.

Attachments

Appendix 1: Location Map – Golden Orchard Drive between Willowbank Trail and Rathburn Road East, and between Burnhamthorpe Road East and Bloor Street (Ward 3)

Appendix 2: Location Map – Cambrett Drive between Morning Star Drive and Etude Drive (Ward 5)

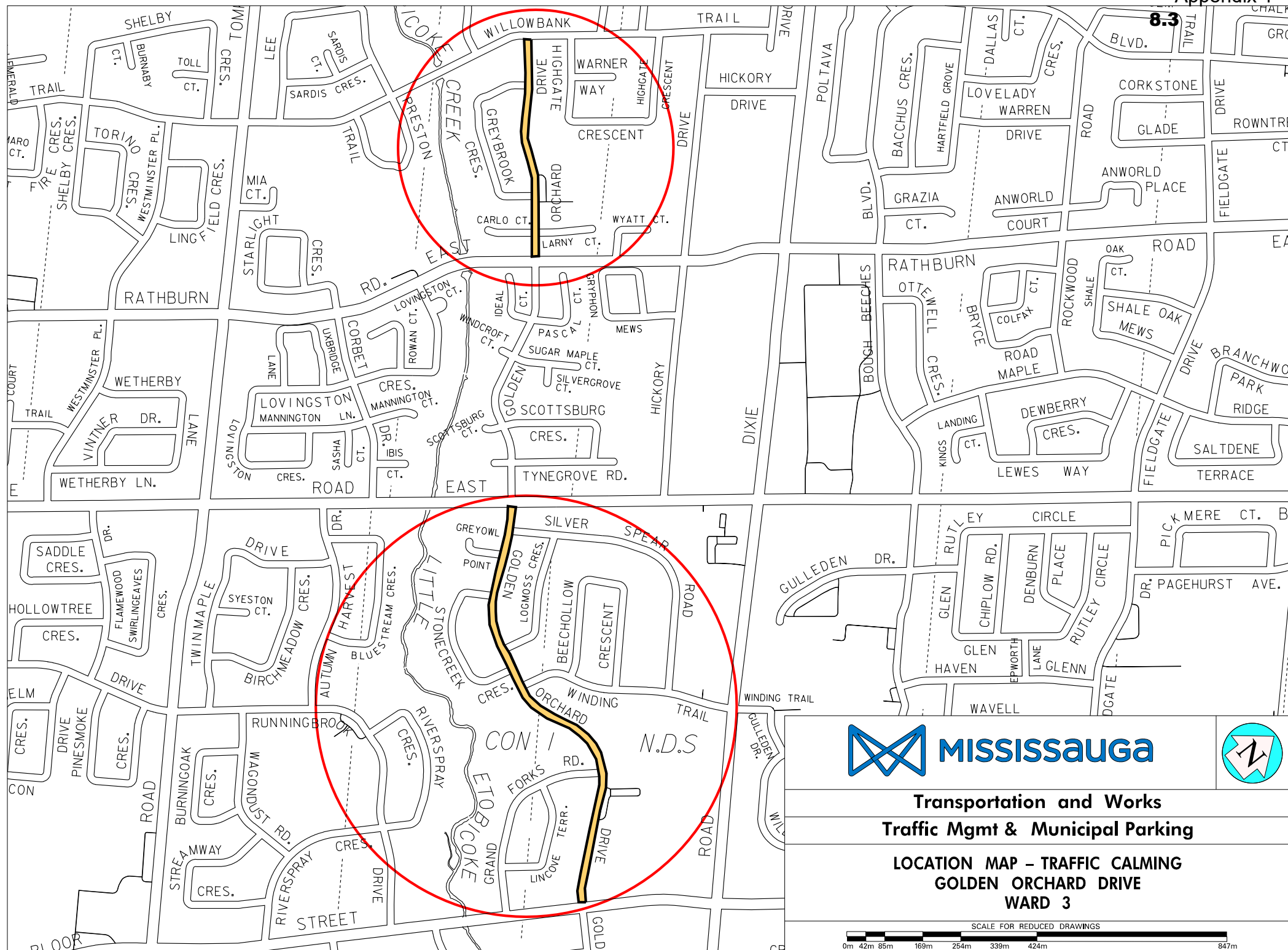
Appendix 3: Location Map – Paisley Boulevard West between Pollard Drive and Confederation Parkway (Ward 7)

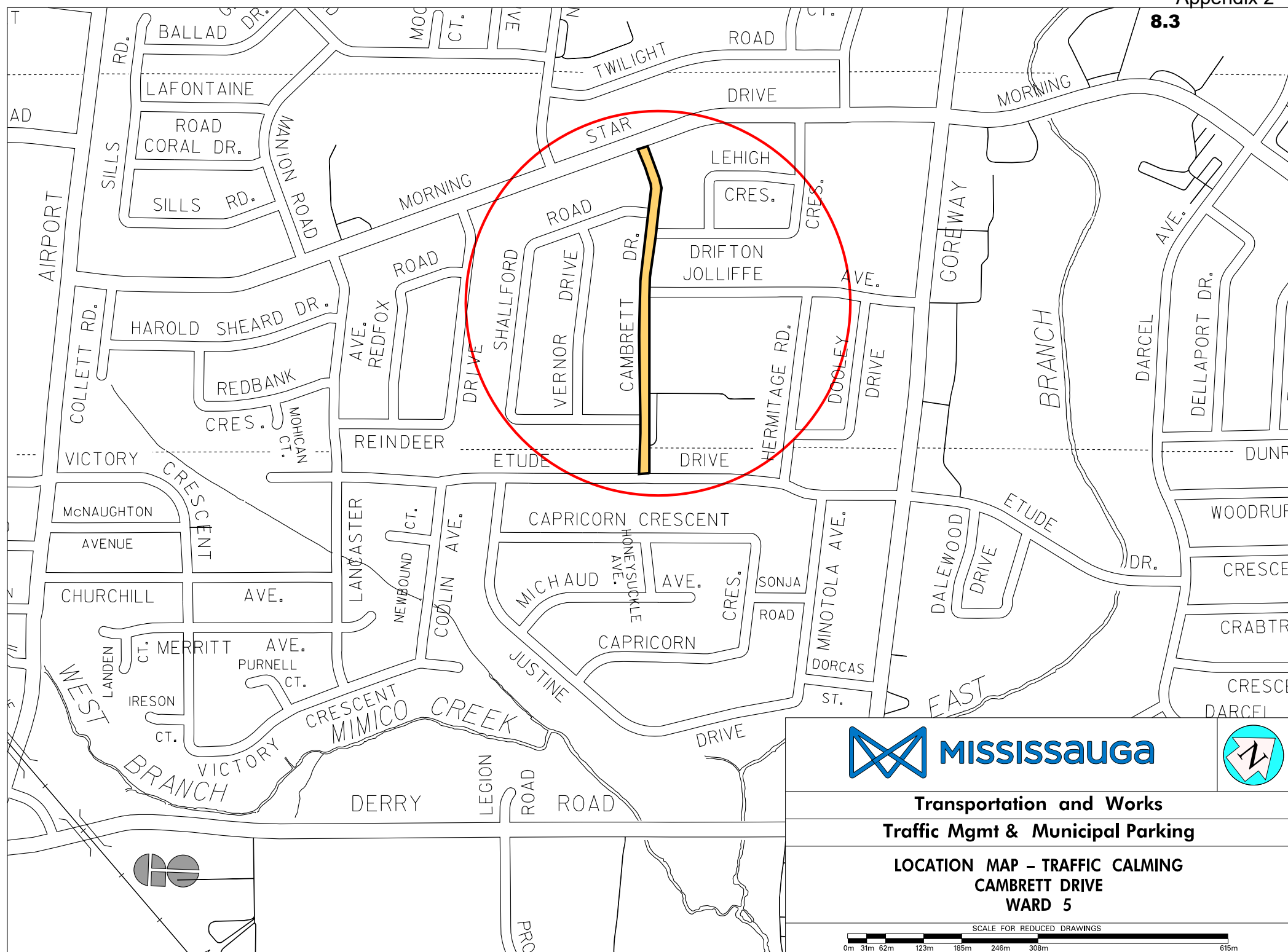
Appendix 4: Location Map – Council Ring Road between Glen Erin Drive (south leg) and The Collegeway (Ward 8)

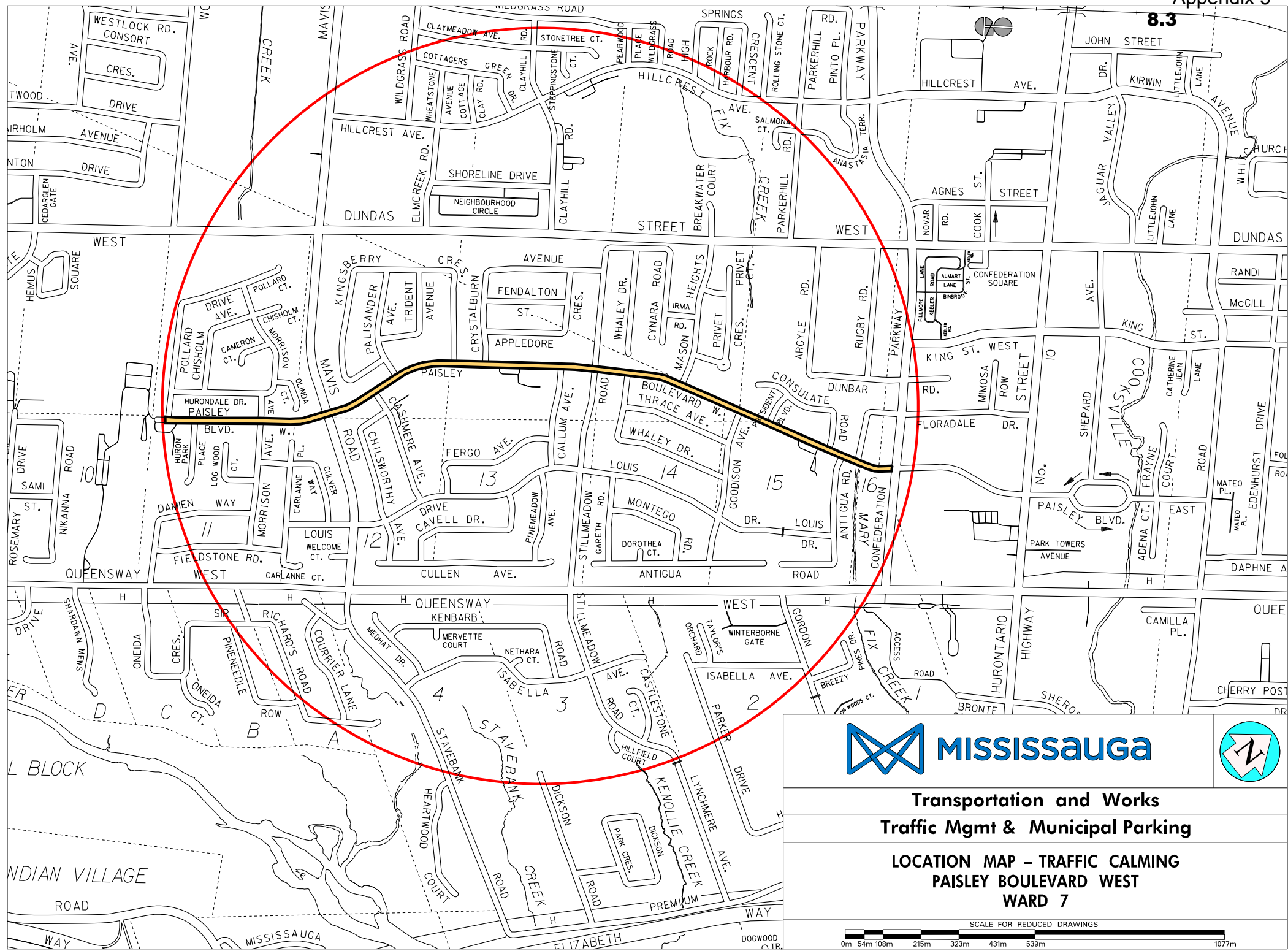


Geoff Wright, P.Eng, MBA, Commissioner of Transportation and Works

Prepared by: Khulud Sheeraz, C.Tech., Road Safety Technician







Transportation and Works
Traffic Mgmt & Municipal Parking

LOCATION MAP - TRAFFIC CALMING
PAISLEY BOULEVARD WEST
WARD 7

