
Facility Accessibility Design Subcommittee of the Mississauga Accessibility Advisory Committee

Date: November 16, 2020
Time: 1:30 PM
Location: Online Video Conference

Members

Clement Lowe	Citizen Member (Chair)
Carol-Ann Chafe	Citizen Member
Emily Daigle	Citizen Member
Steven Viera	Citizen Member
Asim Zaidi	Citizen Member
Naz Husain	ex-officio

Participate Virtually

Any member of the public interested in speaking to an item listed on the agenda may register at dayna.obaseki@mississauga.ca or call 905-615-3200 ext. 5425 by Thursday, November 12, 2020 before 4:00 P.M.

Please note the Facility Accessibility Design Subcommittee will not be streamed and no video will be posted afterwards. If you are interested in attending the meeting virtually, please contact dayna.obaseki@mississauga.ca or call 905-615-3200 ext. 5425 by Thursday, November 12, 2020 before 4:00 P.M. in order to join the meeting.

Contact

Dayna Obaseki, Legislative Coordinator, Legislative Services
905-615-3200 ext. 5425
Email dayna.obaseki@mississauga.ca

1. **CALL TO ORDER**

2. **ITEMS FOR CONSIDERATION**

2.1. Meadowvale Theatre Renovation - Accessibility Review

- *Susan Lewin, Principal, CS&P Architects*
Saeed Sadeghi, Associate, CS&P Architects
- *Sonali Mazmanian, Project Leader, Senior Capital Projects*

2.2. Hurontario LRT: Project Update

- *Leona Hollingsworth, Senior Manager, Community/Stakeholder Relations, Peel, Metrolinx*
- *Tim Lai, Manager, LRT Stakeholder Communications*

2.3. MiWay Infrastructure Growth Plan

- *Alice Ho, Transit Priority Project Leader, MiWay*
Alana Tyers, Manager, Service Development, MiWay

3. **PROJECT UPDATES**

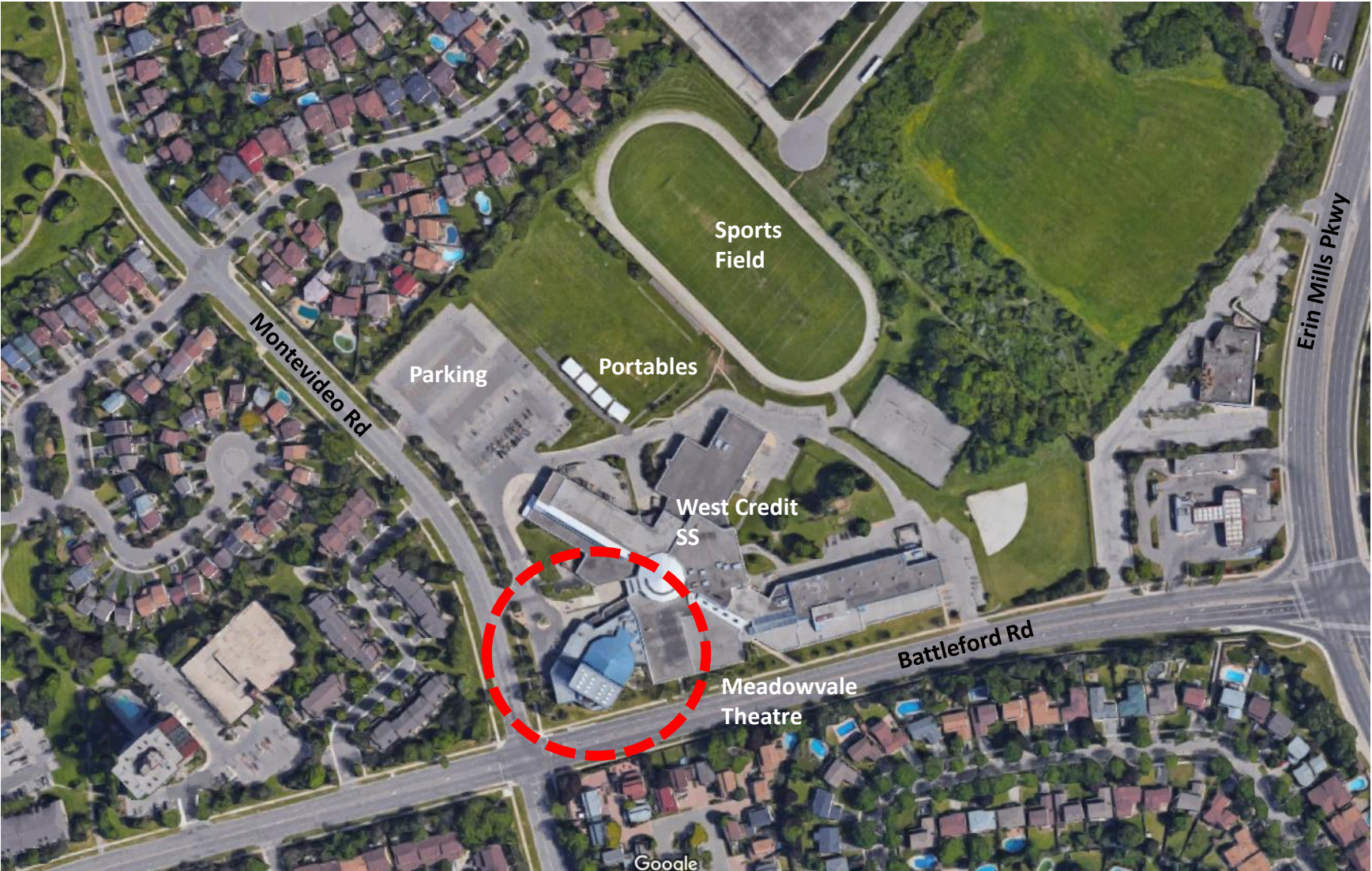
4. **DATE OF NEXT MEETING**

Monday, January 25, 2020 at 1:30PM - Location to be determined.

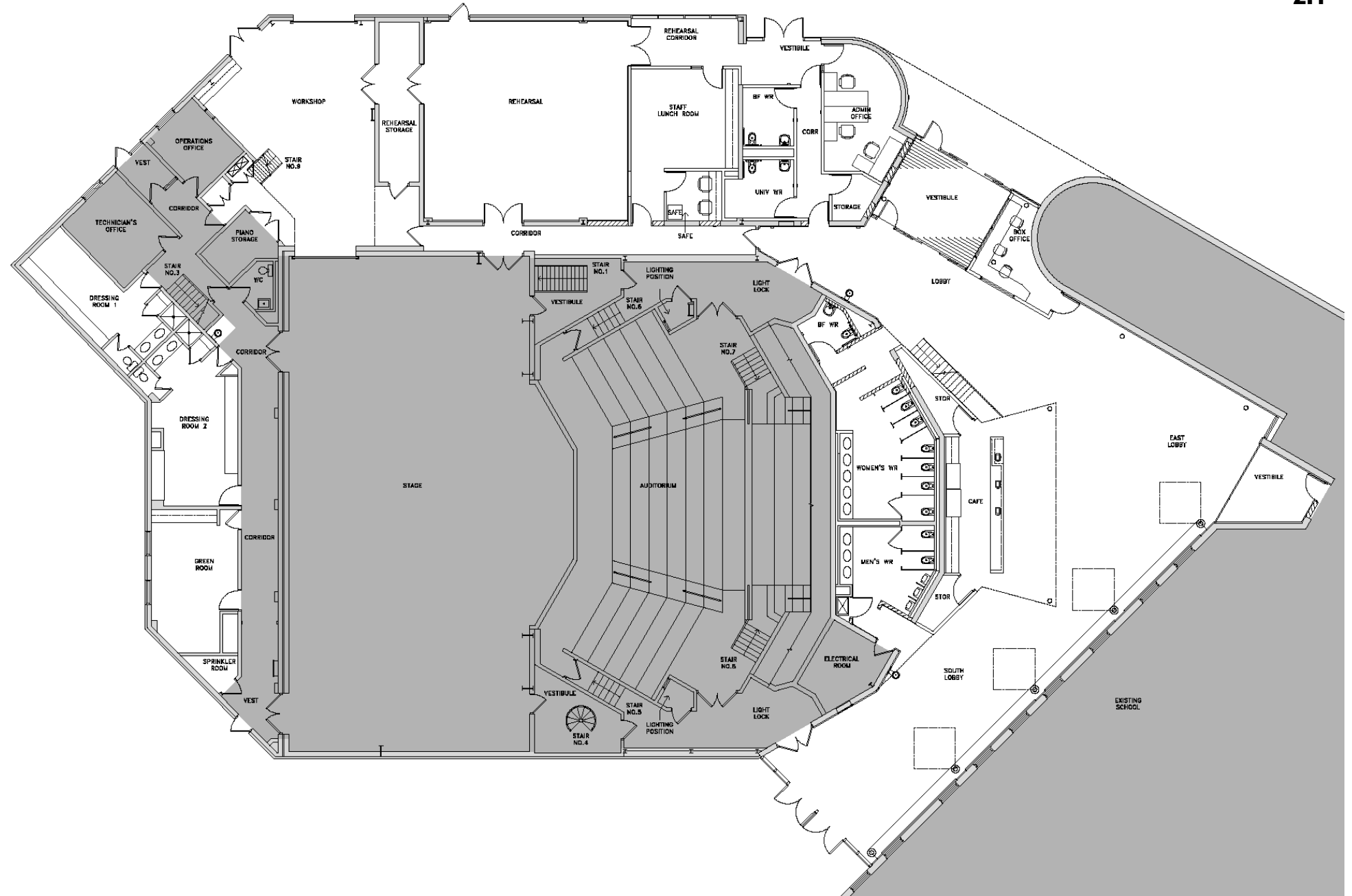
5. **ADJOURNMENT**

Meadowvale Theatre Renovation – Accessibility Review
Mississauga, Ontario

- Construction Documents, October 2020 - January 2021
- Bidding Phase, January 2021 - March 2021
- Construction, April 2021 - April 2022





















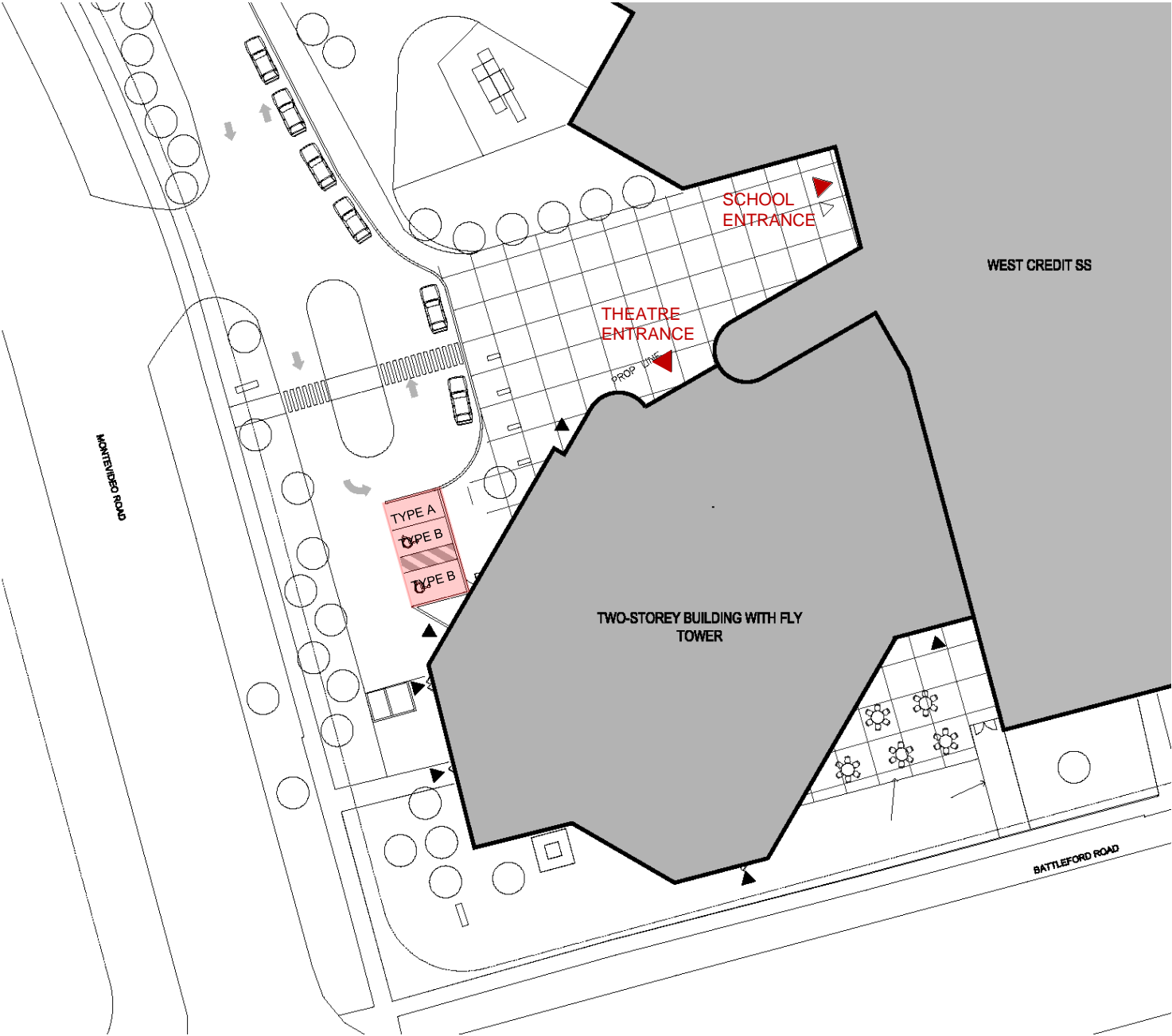


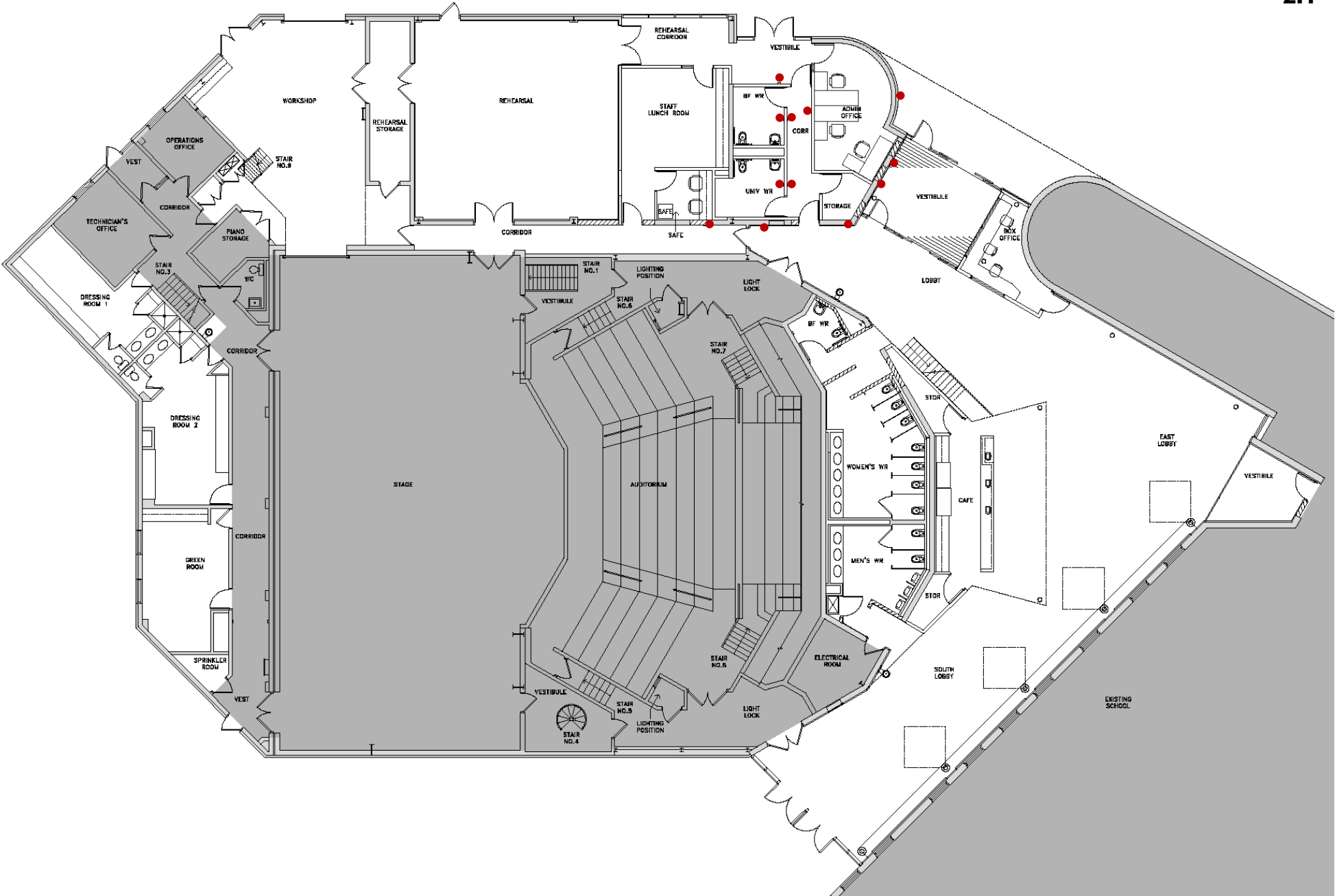


Pedestrian Pathways

— Pedestrian Path

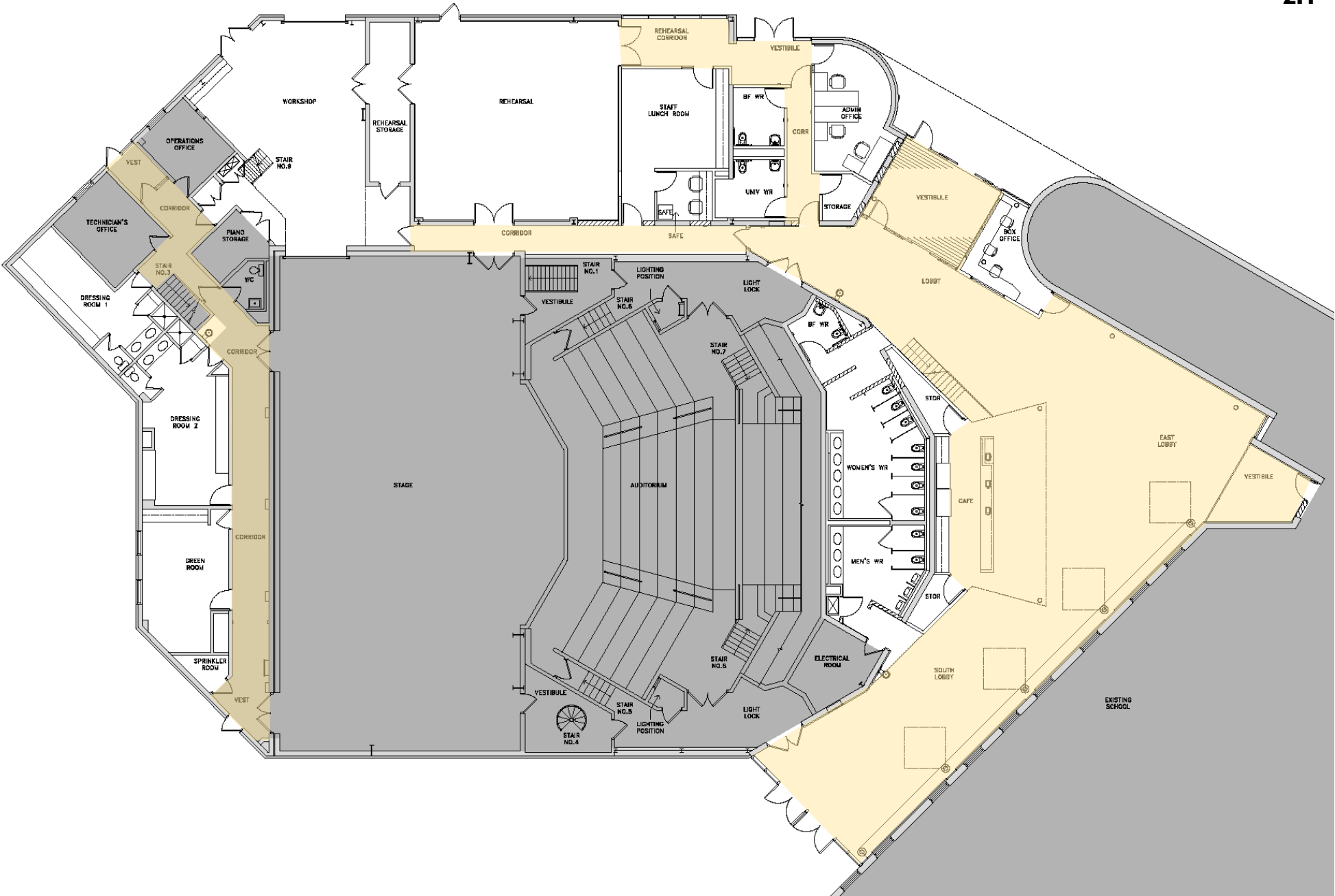






● AUTO DOOR OPERATOR

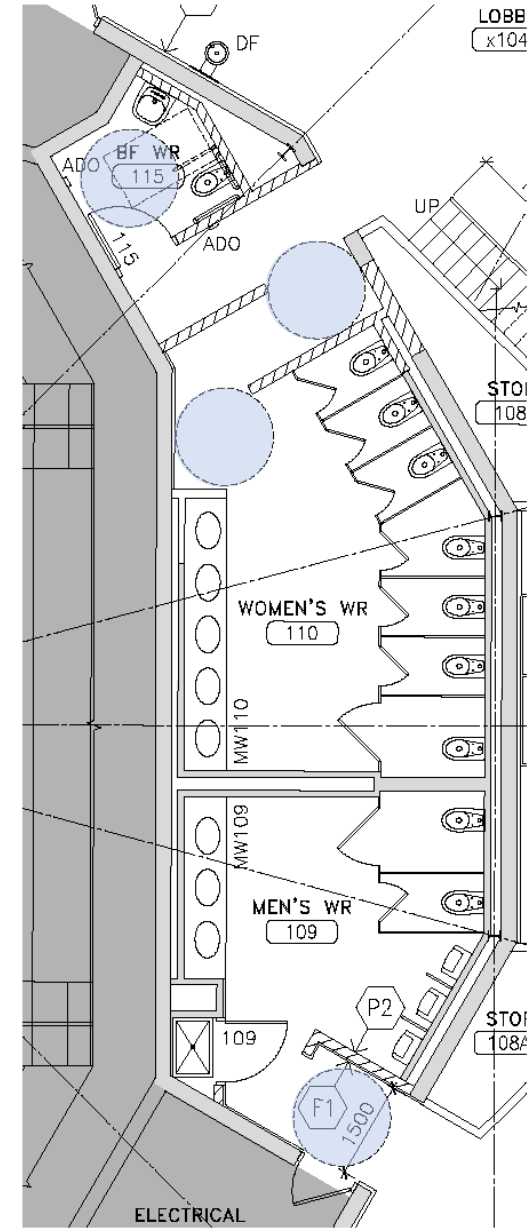
Main Circulation Plan



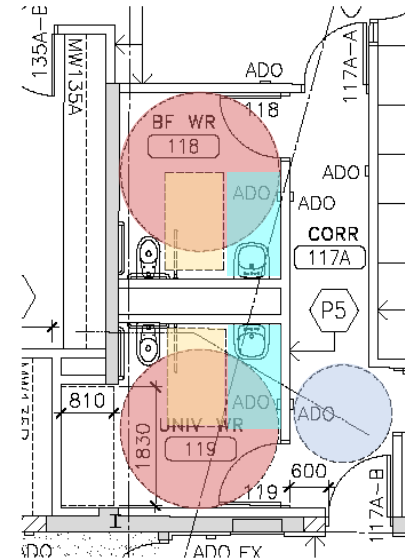
Main Circulation

Washroom Blow-Up

- 1370 Lavatory Clearance
- 915x1500 Transfer Space
- 2440 Turning Space
- 1500 Turning Space



3 MEN'S & WOMEN'S WASHROOM



1 UNIVERSAL & BF WASHROOM

Hurontario LRT: Project Update

Mississauga Accessibility Committee

November 16, 2020



AGENDA

- The Hurontario LRT and COVID-19
- Project Route, Scope, Key Facts & Timeline
- Preparatory Construction Update
- Construction Update
- Accessibility During Construction
- Metrolinx and Accessibility Design
- Communications & Community Relations



HULRT AND COVID-19

Safety is our number one priority. Following the advice of public health agencies, Mobilinx, the Hurontario LRT (HuLRT) constructor, has put in place numerous measures to protect the safety of workers, staff, and the surrounding communities from the spread of the COVID-19 Pandemic.

Safety measures include, but not limited to:

- Daily Health Screening forms (digital and paper)
- Physical Distancing
- Cleaning/disinfecting high touch points on shared surfaces, washrooms, tools, equipment, vehicles
- COVID-19 Quality Assurance Compliance Inspections
- Site Signage and Reminders
- Mobilinx employee letter (proof of essential services)
- Mobilinx employee helpline
- Daily site safety briefings
- Town hall meetings



Project Route, Scope, Key Facts & Timeline

PROJECT ROUTE & SCOPE

- 18 km route from the Port Credit GO Station in Mississauga to the Brampton Gateway Terminal
- 19 stops serving two urban growth centres and four mobility hubs, connections with two GO Transit rail lines, the Mississauga Transitway, Brampton Züm and MiWay
- Clean, electrically powered light rail vehicles, producing near zero emissions
- Expected completion, fall 2024



KEY FACTS

Community Improvements



Cycling infrastructure investment to make cycling safer and more convenient



Increased safety and connectivity on both east and west sides of highway 403, 401 and 407 bridges



Planned streetscapes and landscaping



Improved access to work or recreation

Social Benefits



Less travel time.
Increased reliability



Accessible platforms

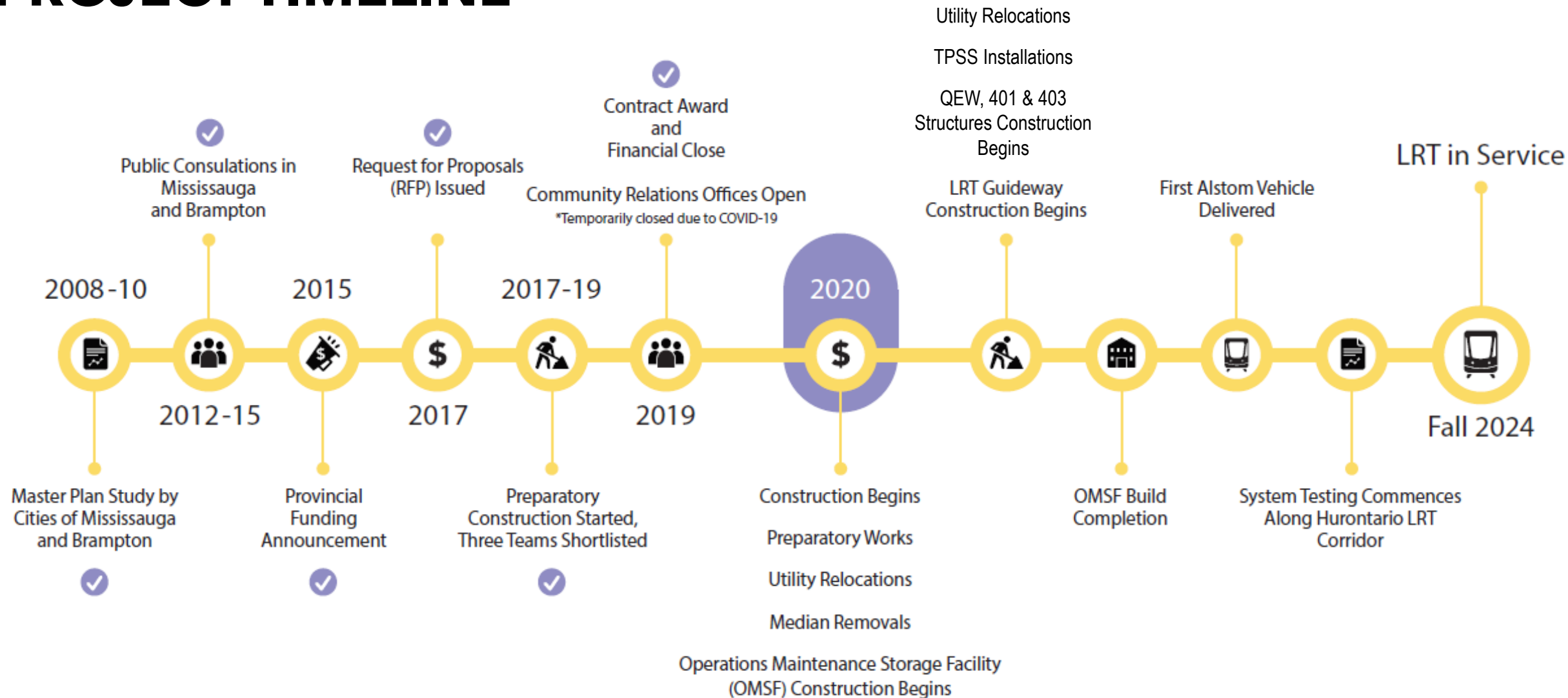


Connected to existing transit providers



7.5 minute service during peak hours

PROJECT TIMELINE



Construction Update

EARLY WORKS

- ✓ Legal Surveying
 - Complete throughout the corridor by end of 2020
- ✓ Borehole Investigation
 - 125 complete of 241
- ✓ Subsurface Utility Engineering
 - 270 SUE investigations were completed of 320 structures
 - Currently: Crews are working in Mississauga South



MAJOR CONSTRUCTION

✓ Median Removals

- Completed throughout the corridor
- 5.4km of median removed
- Remaining medians at signalized intersections ("bull nose") to be removed as temporary traffic signals are installed



Accessibility During Construction

GETTING AROUND CONSTRUCTION



Road Signage (examples from the Finch LRT build)

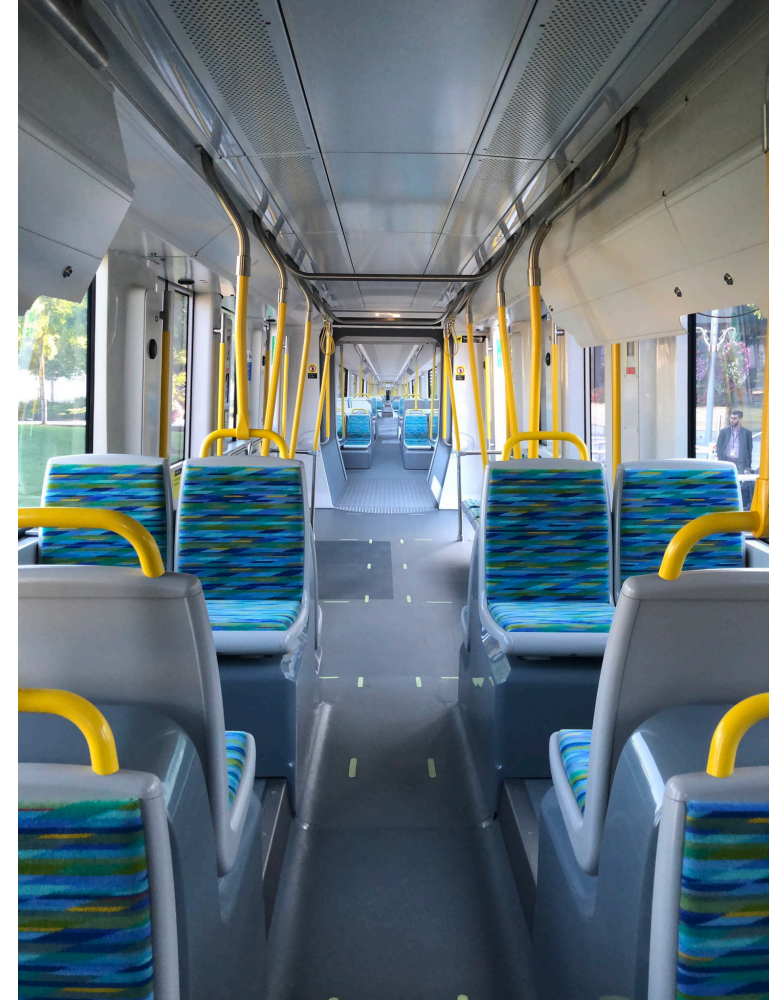
Metrolinx and Accessibility Design

UNIVERSAL DESIGN COMMITMENT

Metrolinx will work diligently to remove existing barriers to access, avoid creating new barriers, and address gaps hindering the safety and customer experience of persons with disabilities. Metrolinx will demonstrate leadership, consulting widely and incorporating best practices that go above minimum legislated requirements to enhance accessibility in its services and infrastructure.

This includes the commitment to:

- ensuring that its services, infrastructure and operations are accessible, safe and convenient to all customers and employees in accordance with the Accessibility for Ontarians with Disabilities Act (AODA),
- and to working with partners in the GTHA to plan, build and operate an integrated accessible transportation system.

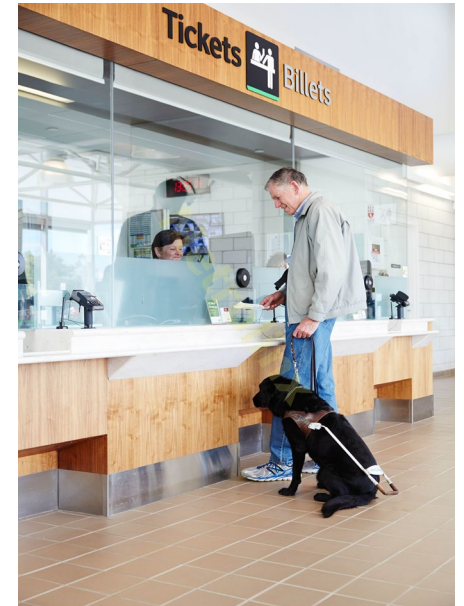


IMPROVING THE CUSTOMER EXPERIENCE: GO RAIL

In Mississauga, Cooksville GO Station has recently undergone an extensive renovation, which includes various accessibility improvements (new accessible pedestrian bridge, improved platform access, etc.)

Metrolinx will have successfully completed accessibility retrofits at the following existing GO stations by the end of 2020:

- New yellow platform edge tactile tiles: Ajax, Allandale, Barrie South, Bloor, Erindale, Lisgar, Mount Pleasant, Newmarket, Old Cummer, and Oshawa
- Elevator upgrades: Ajax, Oakville



IMPROVING THE CUSTOMER EXPERIENCE: LIGHT RAIL TRANSIT

Key accessibility features in all LRT projects include:

- Tactile guidance tiles in stations and centre platform stops;
- Enhanced intercoms that are accessible for customers who are hard of hearing (all intercoms), deaf and non-verbal (some intercoms);
- Elevator redundancy at interchange stations;
- Audible and visual next stop announcements;
- All-door boarding on vehicles



Communications and Community Relations

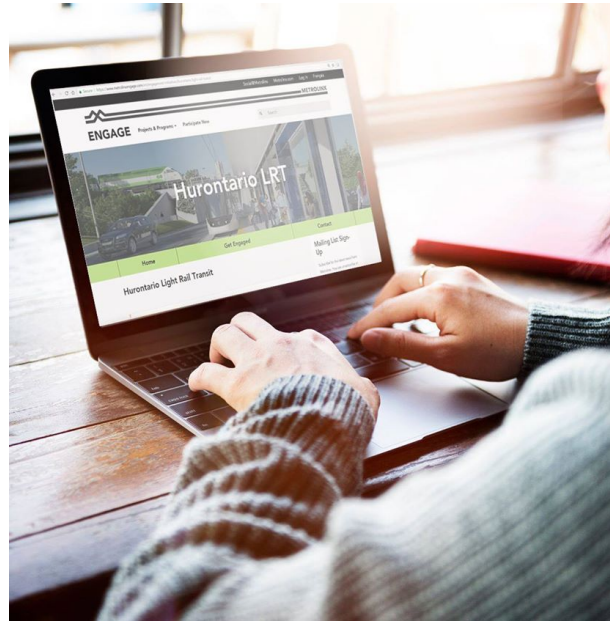
VIRTUAL OPEN HOUSES

Round two: November 16 to December 4. Hosted on Metrolinx Engage.

Opportunity to learn about Hurontario LRT construction updates, ask questions, read other questions and participate by “liking” and “disliking”

Appealing to all:

- Questions can be anonymous
- Video transcript uploaded on main page
- Presentations tailored to each community



[Read Video Transcript](#)



Will the bike lanes be safe and physically separated?

Anonymous

Jun 15, 2020 - 10:08

Will the bike lanes be safe and physically separated from vehicular traffic?

19 6



ANSWER

Metrolinx

Jun 16, 2020 - 16:24

There will be raised and separated bike lanes on both sides of the street from Steeles Avenue to the Queensway. South of the Queensway to the Port Credit GO, bicycles and pedestrians will share a multi-use trail along the east side of Hurontario.

12 8

COMMUNITY OFFICES

- We're in your community:
 - 3024 Hurontario Street, Unit G12, Mississauga
 - 17 Ray Lawson Blvd., Unit 9, Brampton
- Due to COVID Restrictions, team is available remotely Monday to Friday 9am - 5pm.
- After-Hours Phone Line activates for increased support on evenings, weekends and holidays



WE'RE HERE FOR YOU

Questions? Ask us at metrolinxengage.com/huLRT

- Or contact us by phone, email, or on social media

For More Information

- Stay up to date with Metrolinx projects in your region! Sign up for our e-newsletter at Metrolinx.com/peel

Hurontario LRT Community Offices

Phone: 416-202-7500

Email: Peel@Metrolinx.com

3024 Hurontario Street unit G 12
Mississauga, ON. L5B 4M4

17 Ray Lawson Blvd unit 9
Brampton, ON. L6Y 5L7



@HurontarioLRT

Sign Up
for Peel Region updates and more
from Metrolinx

Email*

Subscribe

Subscribe for the latest news from Metrolinx. You can unsubscribe at any time.
Your personal information is being collected under the authority of the Metrolinx Act, 2006 in order to provide you with email communications about Metrolinx services.
For questions, contact: Manager, Customer Contact, Metrolinx, 20 Bay St, Toronto, ON, M5J 2W3, (416) 869-3600.

Questions?





MiWay Infrastructure Growth Plan (MIGP)

What Is It?

A strategic plan to direct the effective allocation of City of Mississauga investments to transit infrastructure.



Routes



Frequency



Service



Operating
Budget

MiWay Infrastructure Growth Plan



Capital
Budget

Why do we need it?

Why?

Lack of supportive infrastructure and passenger amenities and constraints on operations

Where?

MiWay terminals and MiExpress stops

What?

Terminal locations, terminal infrastructure, stop infrastructure, transit priority applications

When?

Within the five to ten-year timeframe

Study Process

Key Tasks

**Background
Review**

What has been
done?

**Existing
Conditions**

What are the
issues?

**Infrastructure
Direction**

Where do we
want to go?

Opportunities

What can we
do?

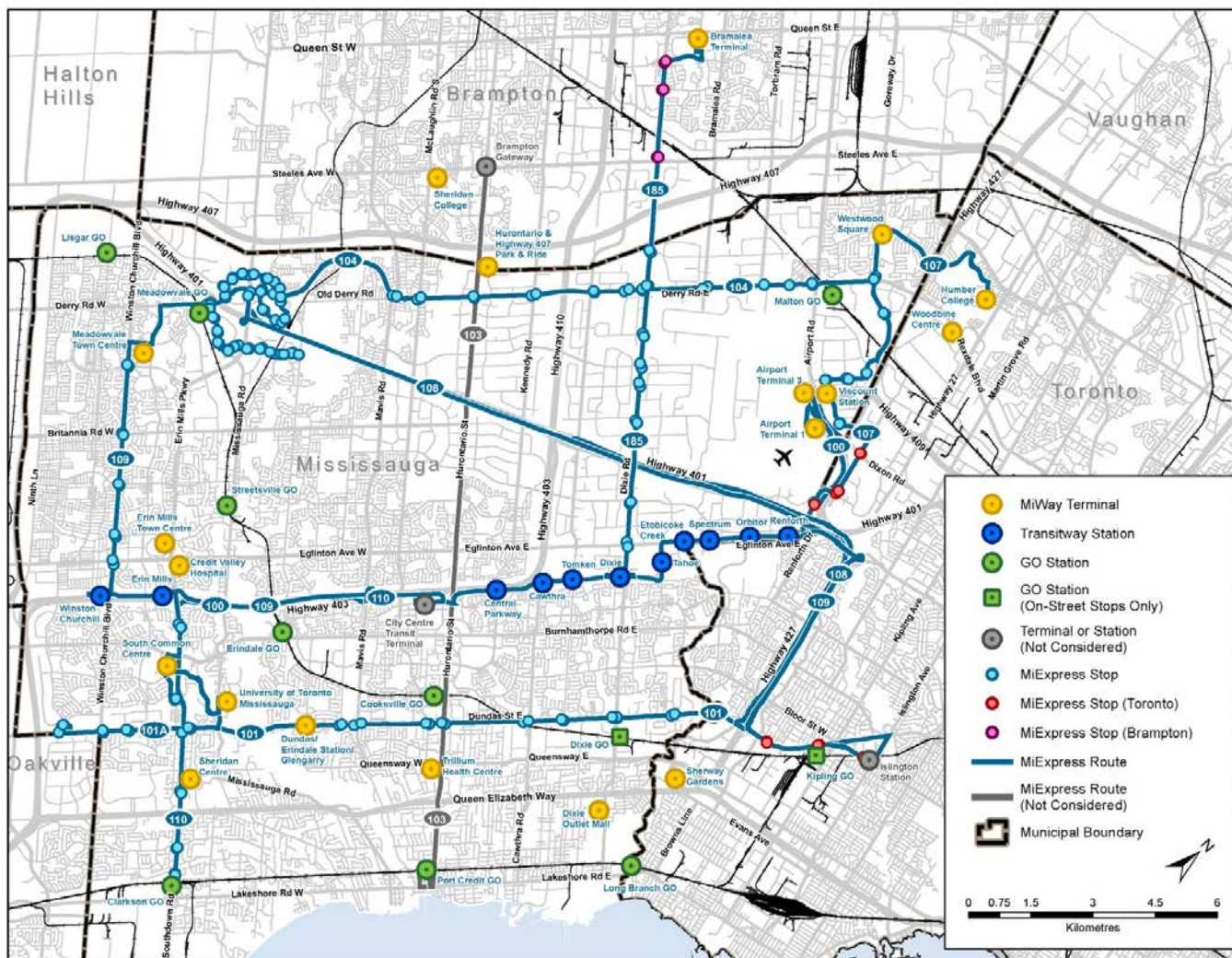
Feasibility Plans

How can we do
it?

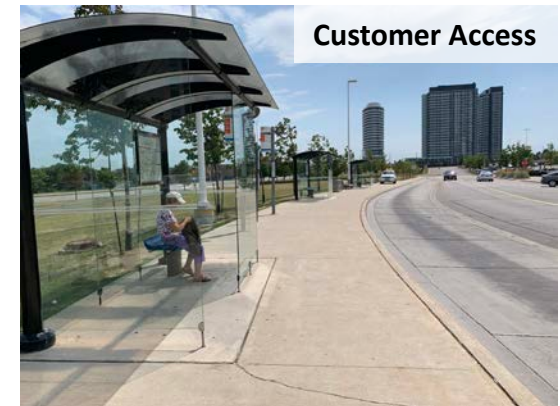
**Implementation
Strategy**

What is the cost
and timing?

Study Extents: MiWay Terminals and MiExpress Routes



Example of Terminal Issues/Challenges



Examples of Stop Issues/Challenges



Infrastructure Direction

Comprehensive barrier-free transit infrastructure that enhances the customer experience, attracts new passengers, and strengthens the connection between land use and transit.



Barrier-free infrastructure

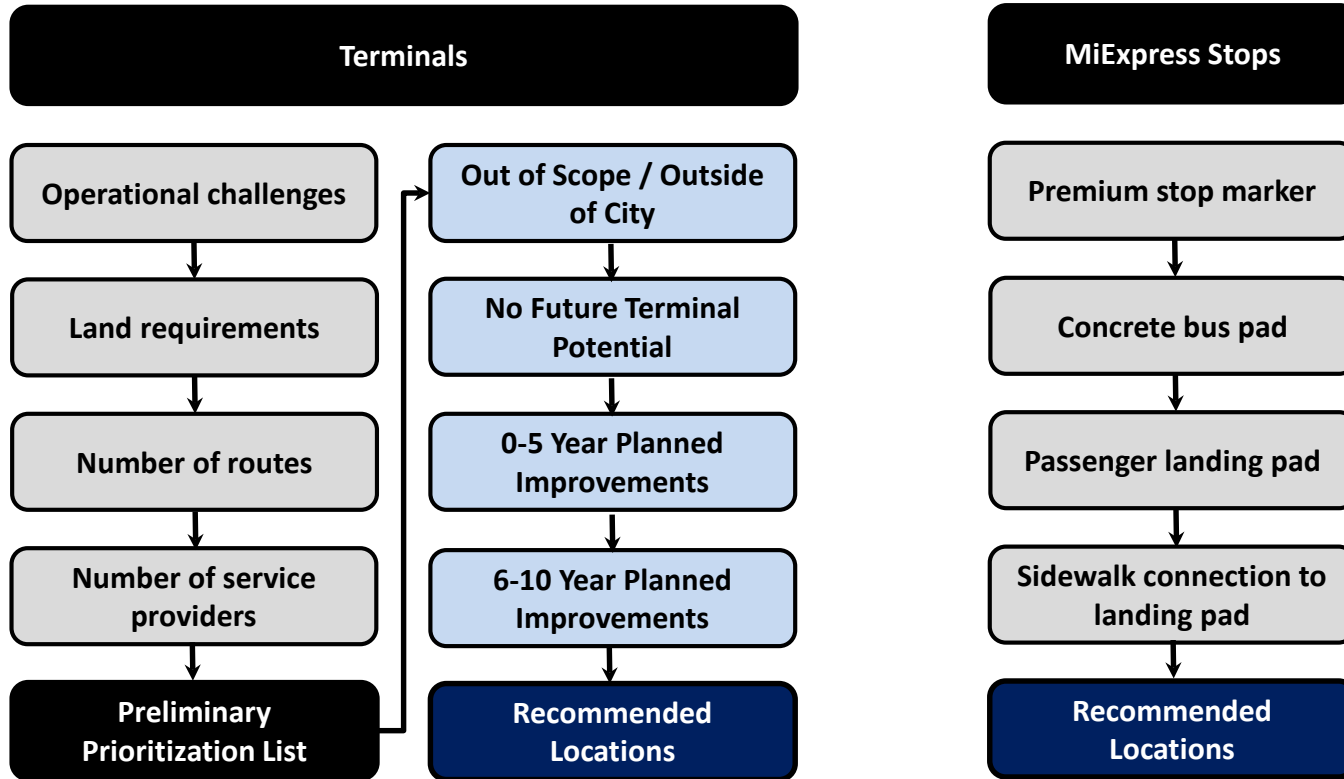


Enhanced customer experience

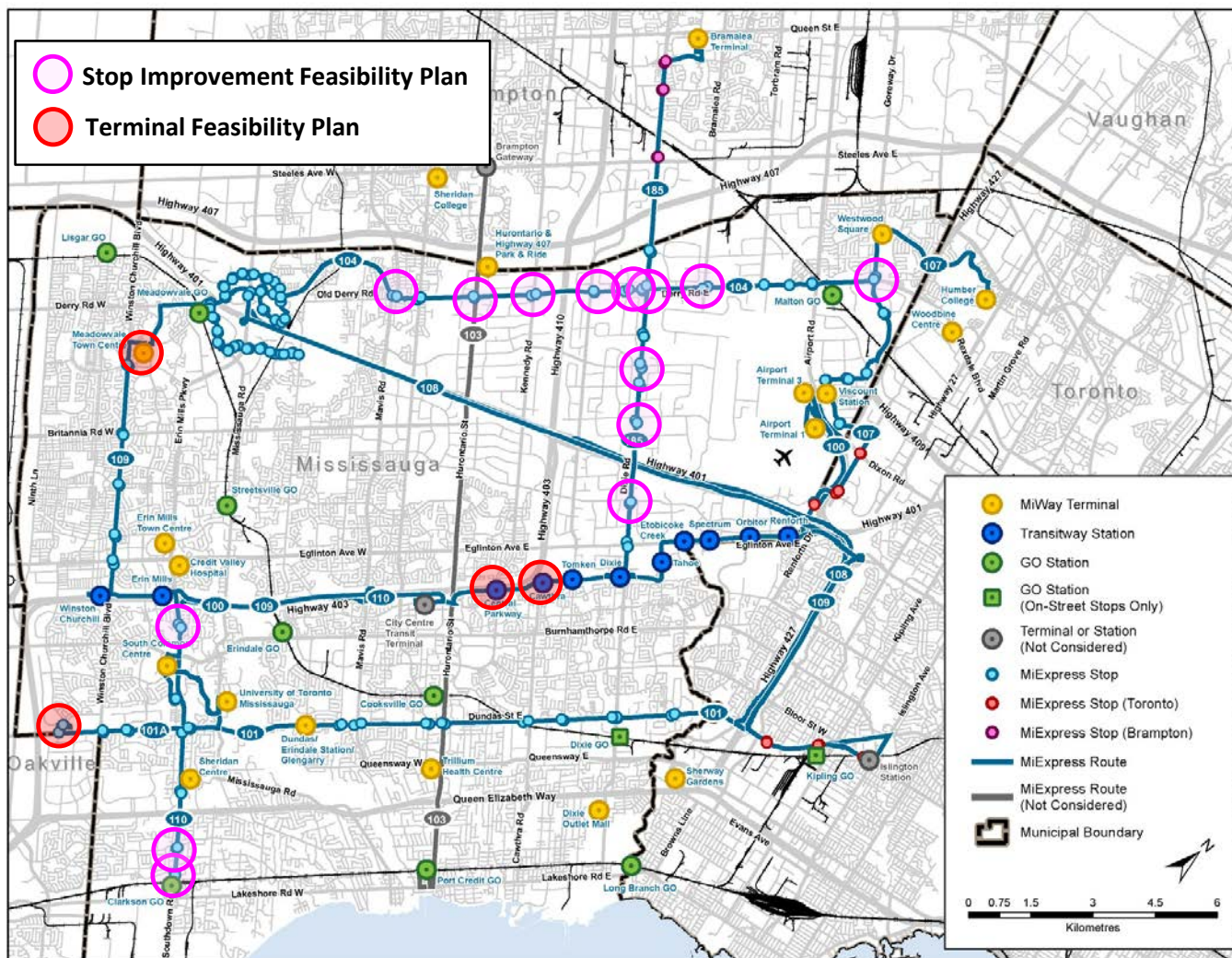


Land use and transit connections

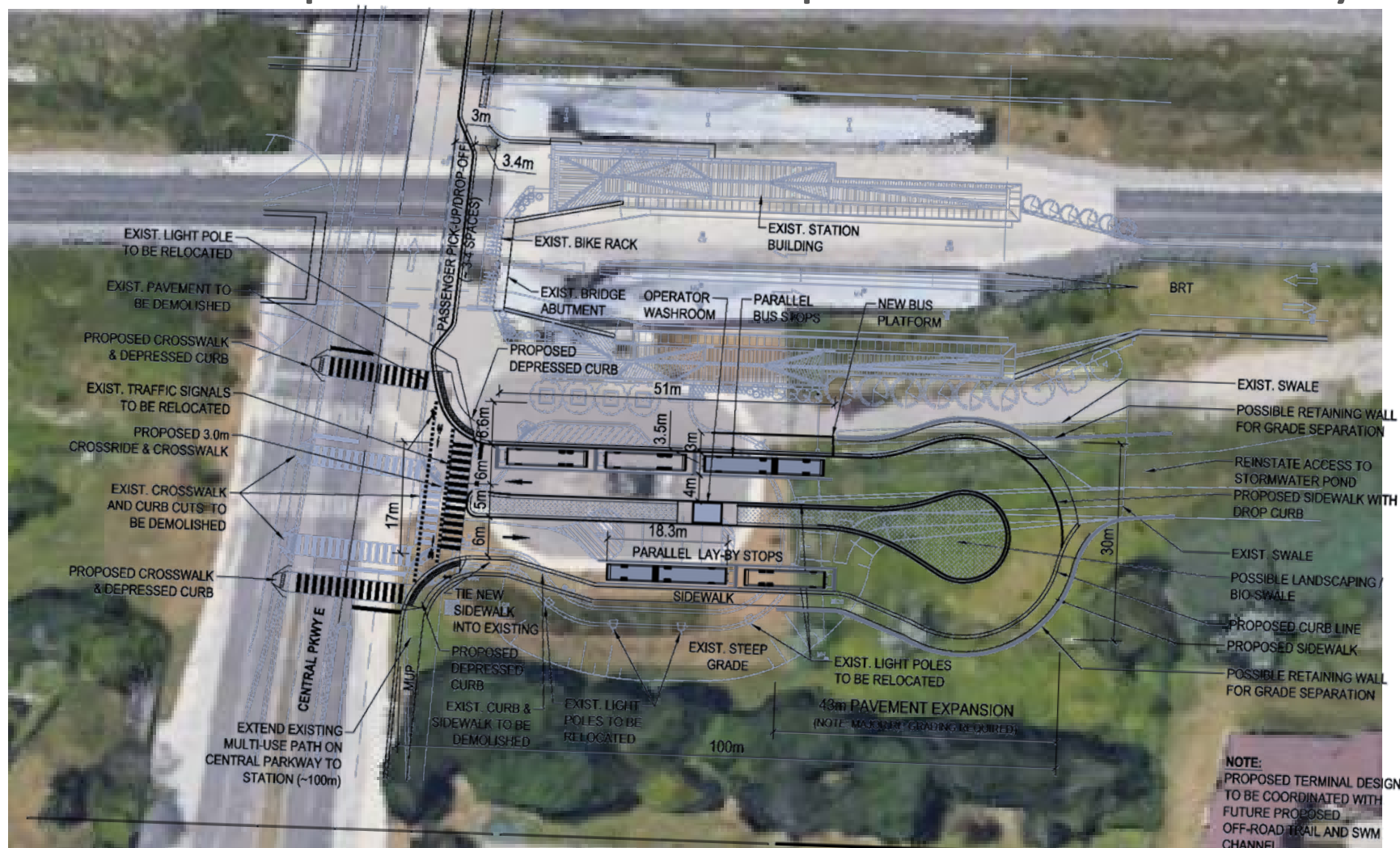
Evaluation of Opportunities



Recommendations: Stops and Terminals

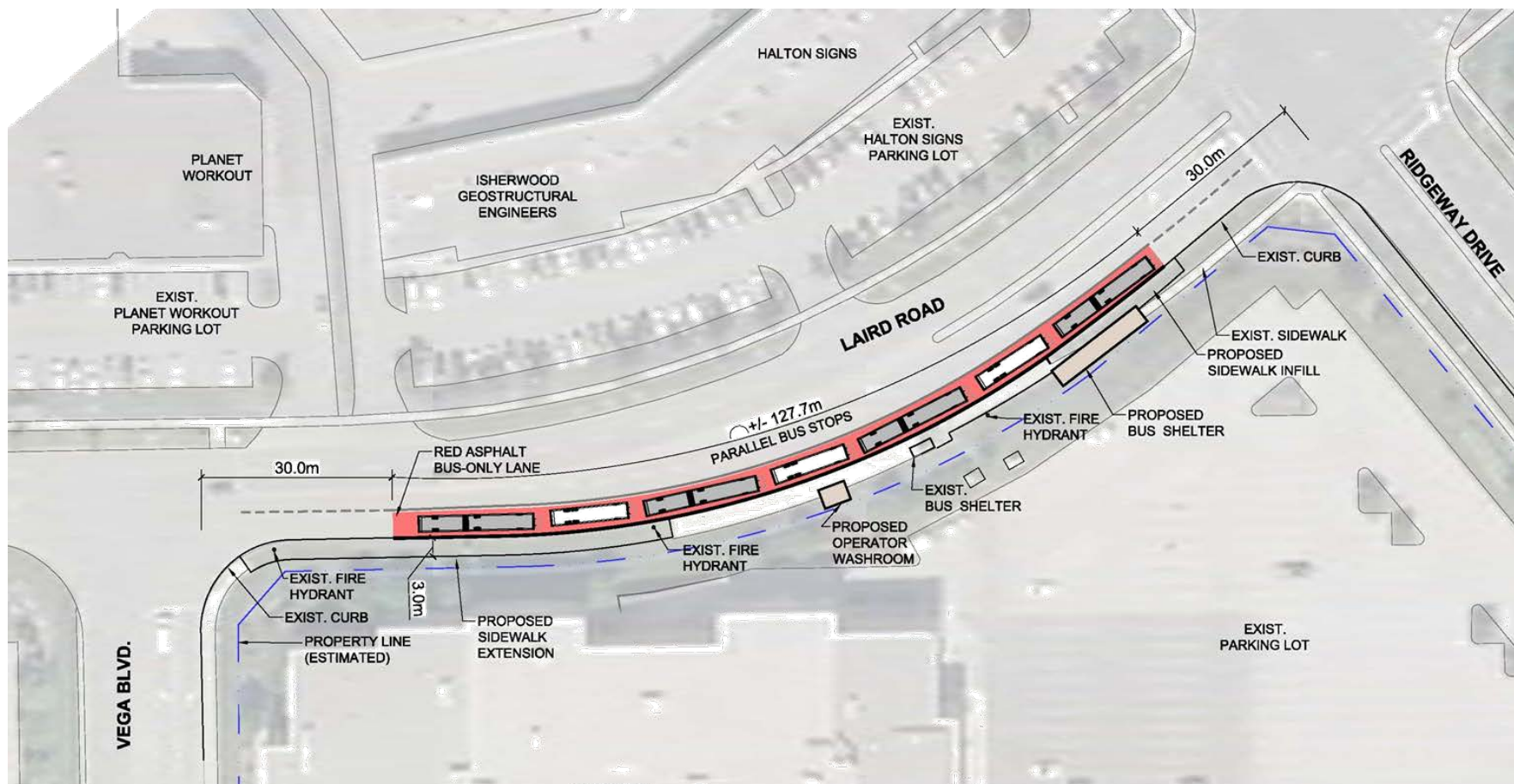


Terminal Improvement Concept: Central Parkway



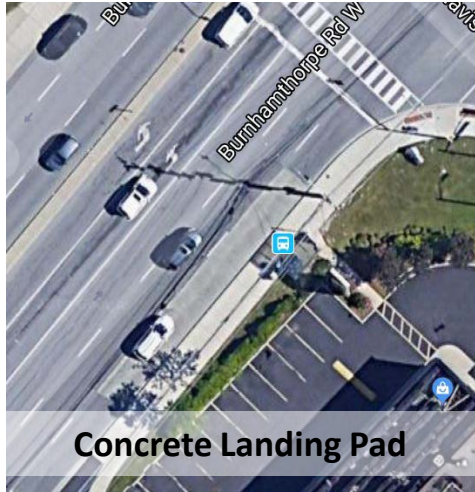
Note: Drawing not to scale and for visual purposes only

Terminal Improvement Concept: Laird/Vega

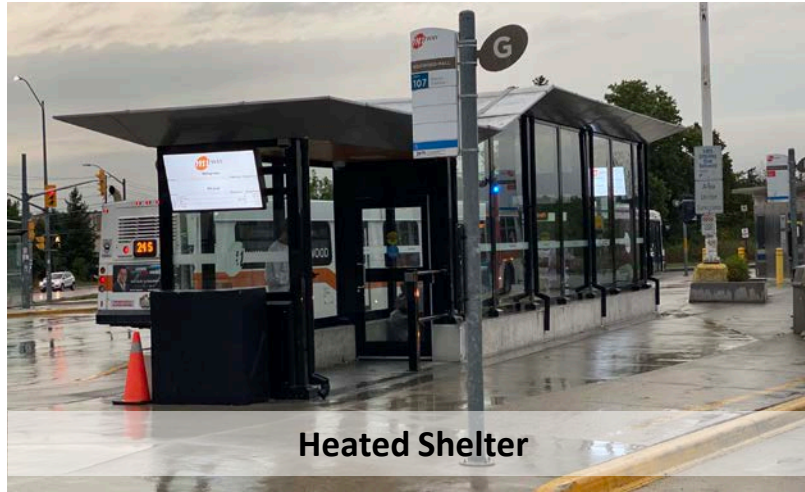


Note: Drawing not to scale and for visual purposes only

Stop Improvements



Concrete Landing Pad



Heated Shelter

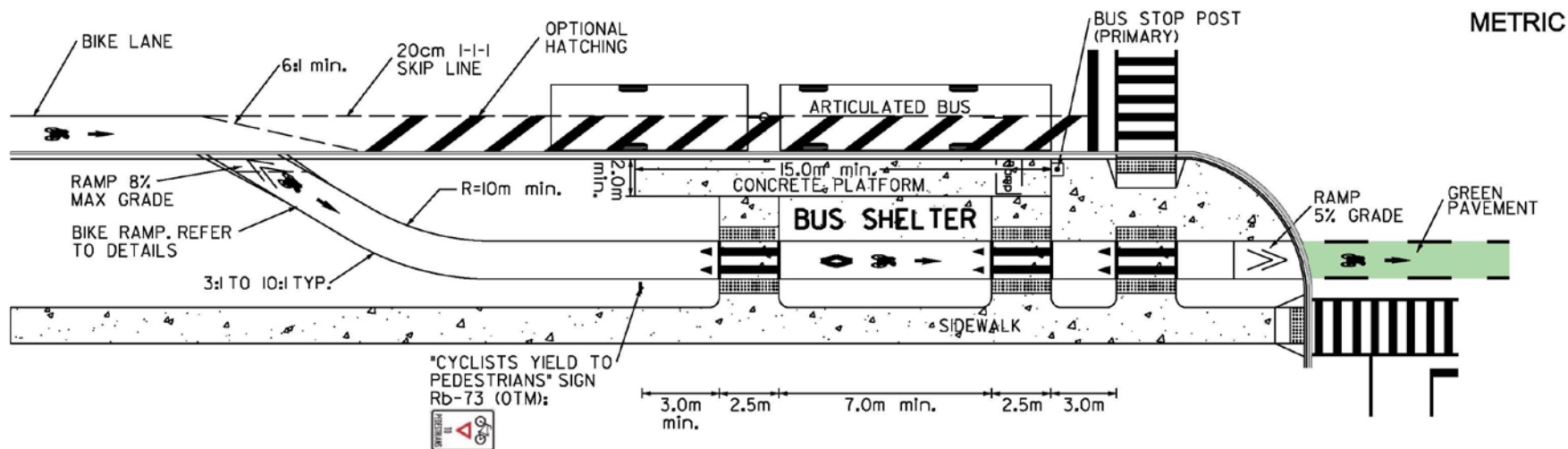
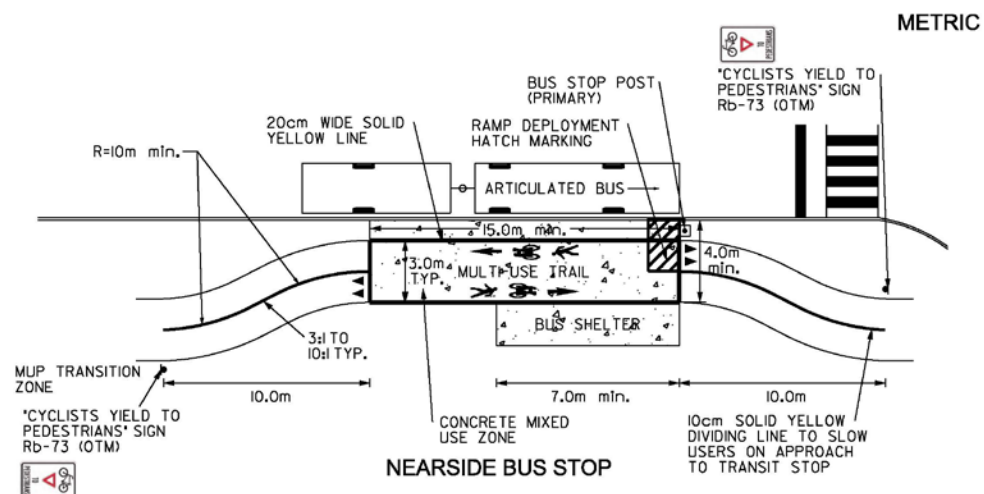


Queue Jump Lane



Red Paint Application

Standard Drawing Updates (Examples)



Next Steps

- Prepare detail design of concepts to be shovel ready when funding becomes available
- Integration/coordination with planned works (e.g., City of Mississauga, Region of Peel, MTO, property owners) to minimize construction impacts

Thank you!