

# Mississauga Official Plan Review

Protect the Natural Environment and Respond to  
Climate Change

Deputation to the Environmental Action Committee

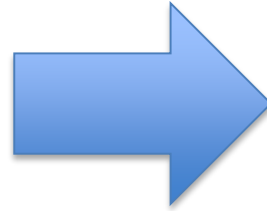
Presented by: Amina Menkad and Sharleen Bayovo  
City Planning Strategies Division, Planning & Building Department

July 6, 2021





2012



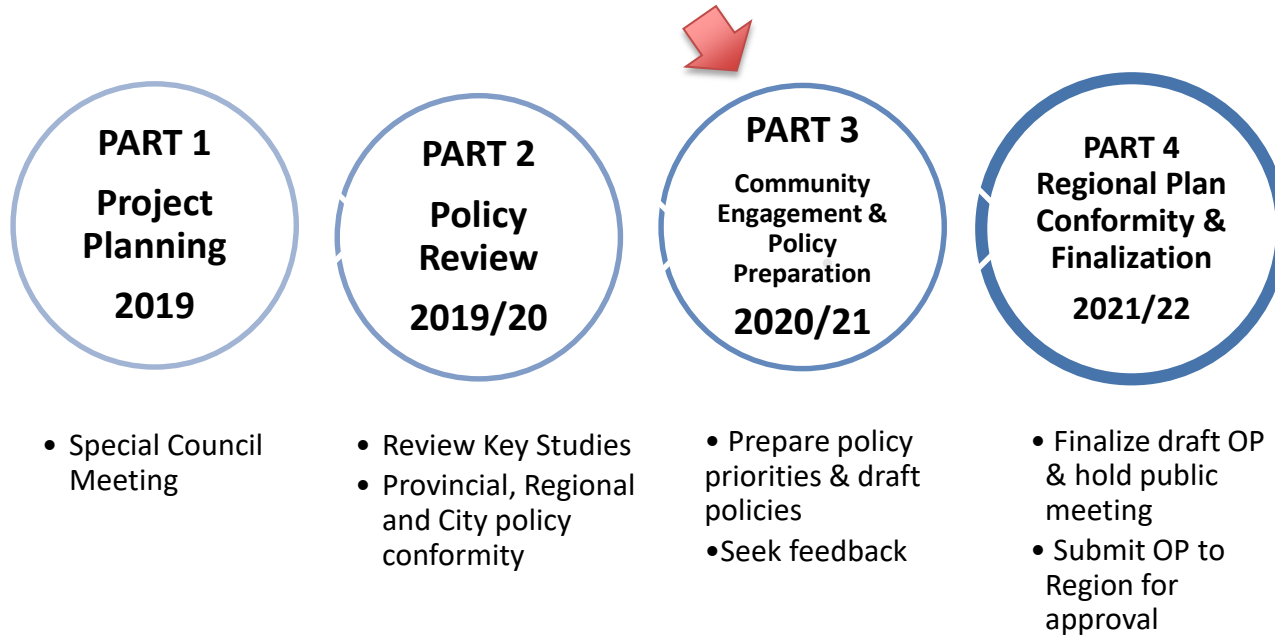
2022

## Four Pillars of the Official Plan Review:

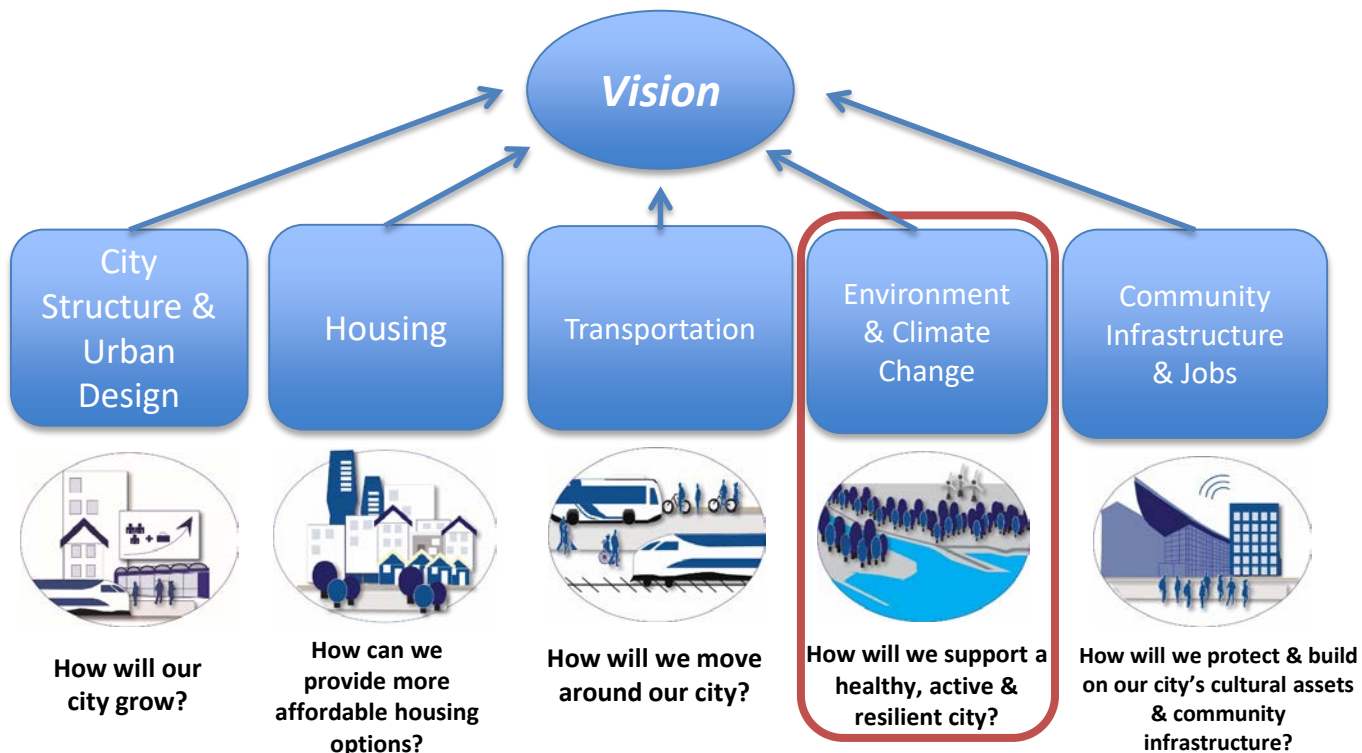
1. **Conformity**
2. **Simplify**
3. **Certainty**
4. **Innovation**



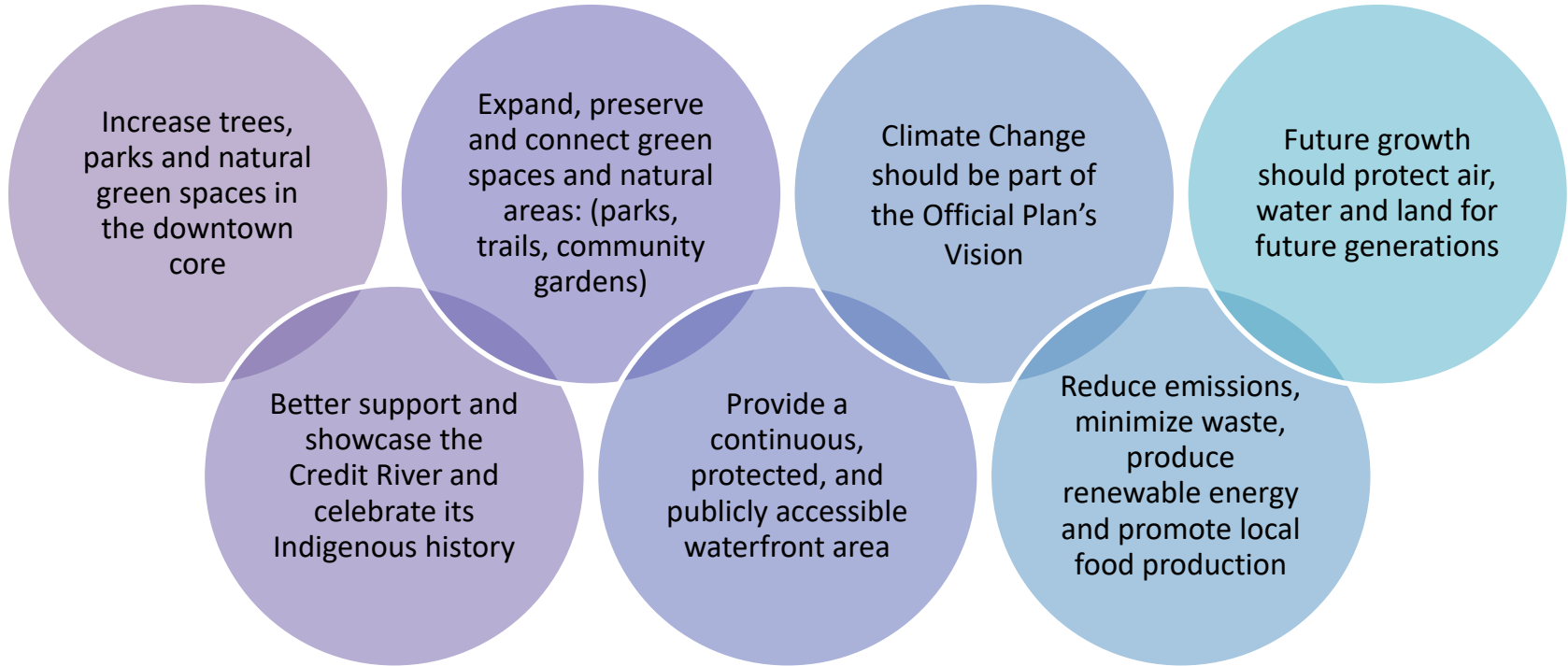
# Official Plan Review Timeline



# Fall 2020 Engagement - Confirm Priorities

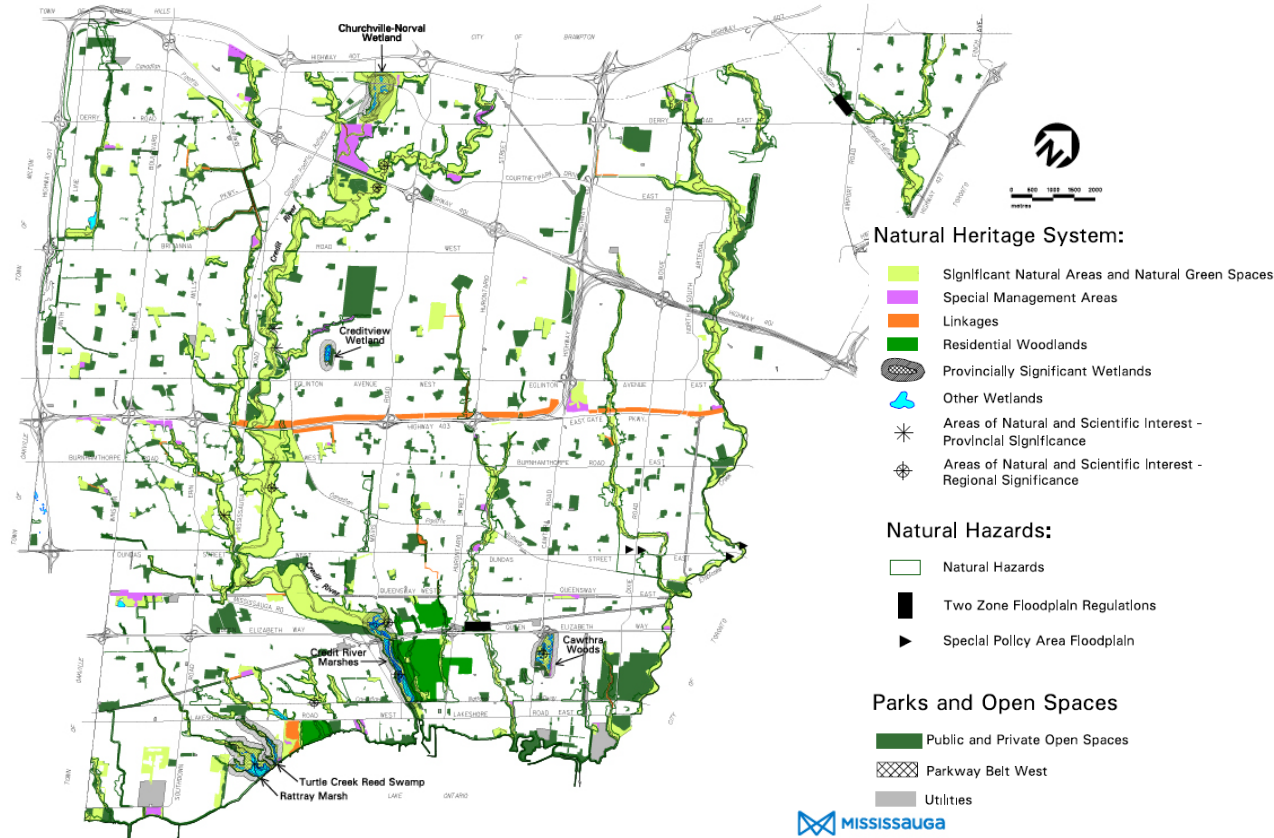


## Fall 2020 Engagement - We asked how we can continue to protect our environment and respond to climate change. Responses:



# The Green System

- The Natural heritage System
- Natural Hazard Lands
- Parks and Open spaces
- The Urban Forest (not mapped)





## Key Environment and Climate Change Policy Directions



## 1

# Continue to Value The Environment

1. Conform to requirements to protect water sources
2. Adopt an integrated and coordinated approach to land use and stormwater infrastructure planning
3. Emphasize the importance of watershed planning in informing land use policies and decisions
4. Reinforce the importance of natural and hydrological features and areas as green assets in responding to climate change

## 6 Value the Environment

### 6.1 Introduction

Mississauga is located on the shore of Lake Ontario, part of the largest system of freshwater lakes in the world. Mississauga contains watersheds of the Credit River, Etobicoke Creek and other watercourses that form part of the Great Lakes drainage basin. Mississauga is partially within the Carolinian Forest Ecoregion, Canada's most biologically diverse ecological region. This region contains Canada's most rare and endangered plants and animals, and is the most threatened ecological region in Ontario.

The City's Strategic Plan identifies "Living Green" as one of the five pillars of the strategic vision for the

city. Living Green involves implementing measures that are sensitive to, and complement, the natural environment. As the city continues to grow, it is imperative that growth does not compromise the natural environment, including the climate. The health of the natural environment is critical to human and economic vitality and the overall well-being of society. It provides the fundamental necessities of life – clean water, air and land and is an essential component of the fabric and character of communities. Further, climate change affects land use policies and transportation choices that can contribute to improving the quality of the environment and lead to developing a sustainable city. These policies are the subject of this chapter.



Figure 6-1: As an environmentally responsible community, Mississauga is committed to environmental protection, conducting its corporate operations in an environmentally responsible manner and promoting awareness of environmental policies, issues and initiatives. Residents and businesses have a large role to play to help protect and enhance the land, air, water and energy resources that are enjoyed by all in the city. (Credit River Valley)

## 2

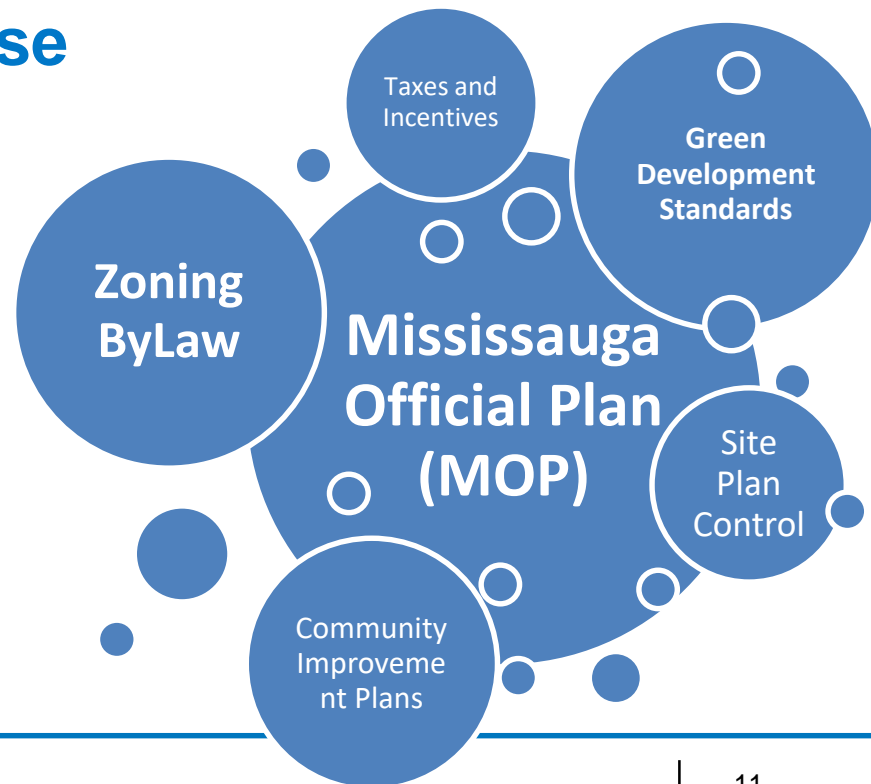
## Climate Mitigation And Adaptation Land Use Measures

1. The application of a climate lens to “Complete Communities”
2. Support climate resilient and green development practices
3. Policies will reflect action and recommendations from other City plans and strategies

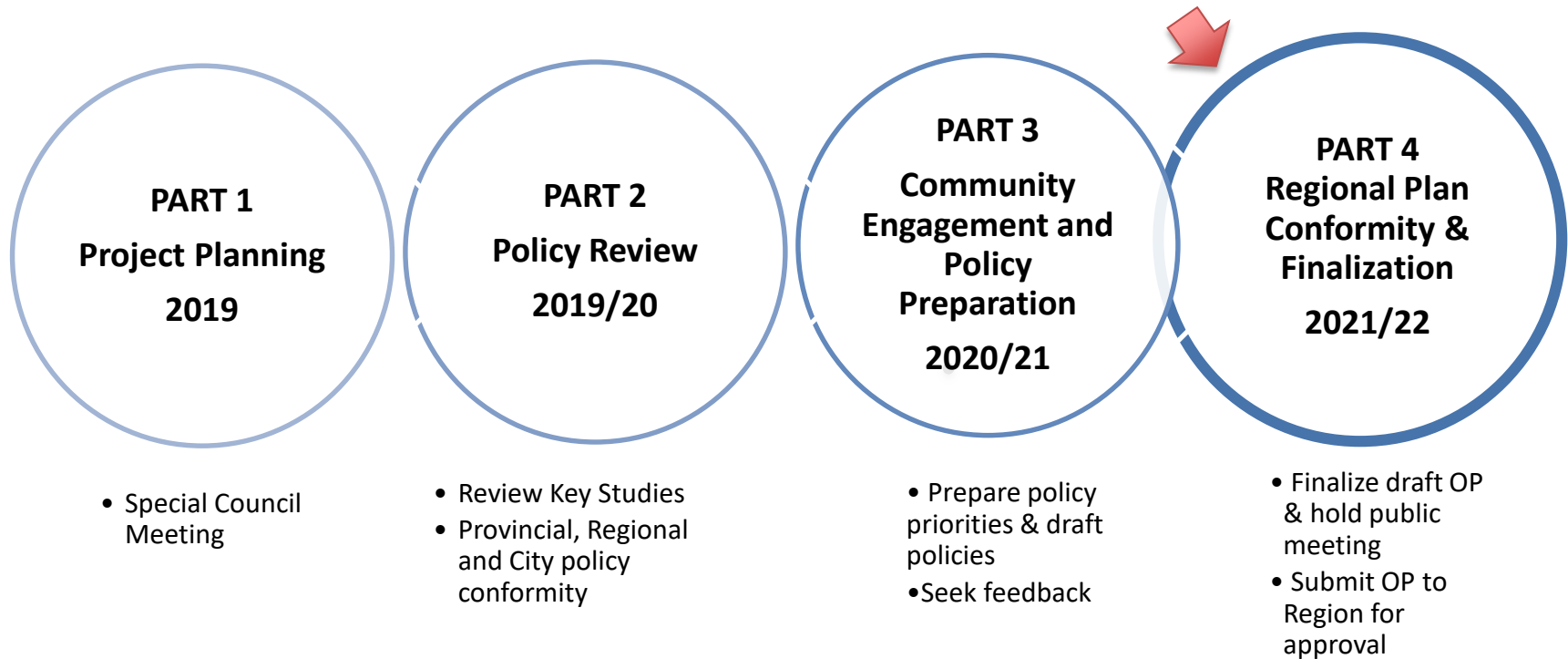


## 3 Adopt a Comprehensive Land Use Approach to a Climate Change Response

**The Official Plan is the primary implementation document of land use climate mitigation and adaptation measures**



# Next Steps



# Official Plan

## Our Future City

## THANK YOU

To review and comment on the full set of preliminary policy change directions, please visit:

<https://yoursay.mississauga.ca/official-plan-review>