

SCALE 1" = 20'-0"

#### LOT COVERAGE

MAXIMUM LOT COVERAGE = 35%  
EXISTING LOT AREA = 10,813 ft<sup>2</sup> (1005 m<sup>2</sup>)  
LOT COVERAGE OF PROPOSED BUILDING =  $3731 \text{ ft}^2 \div 10813 \text{ ft}^2 = 0.345$

#### BUILDING FOOTPRINT

MAXIMUM BUILDING FOOTPRINT =  $10813 \text{ ft}^2 \times 0.35 = 3785 \text{ ft}^2$  (352 m<sup>2</sup>)  
PROPOSED BUILDING FOOTPRINT:  
DWELLING = 3470 ft<sup>2</sup> (322 m<sup>2</sup>)  
COVERED PORCH = 261 ft<sup>2</sup> (24 m<sup>2</sup>)  
TOTAL = 3731 ft<sup>2</sup> (347 m<sup>2</sup>)  
DECK = 103 ft<sup>2</sup> (9.5 m<sup>2</sup>) \*

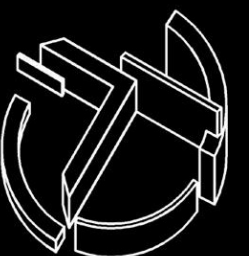
\* Lot coverage / building footprint not inclusive of rear staircase

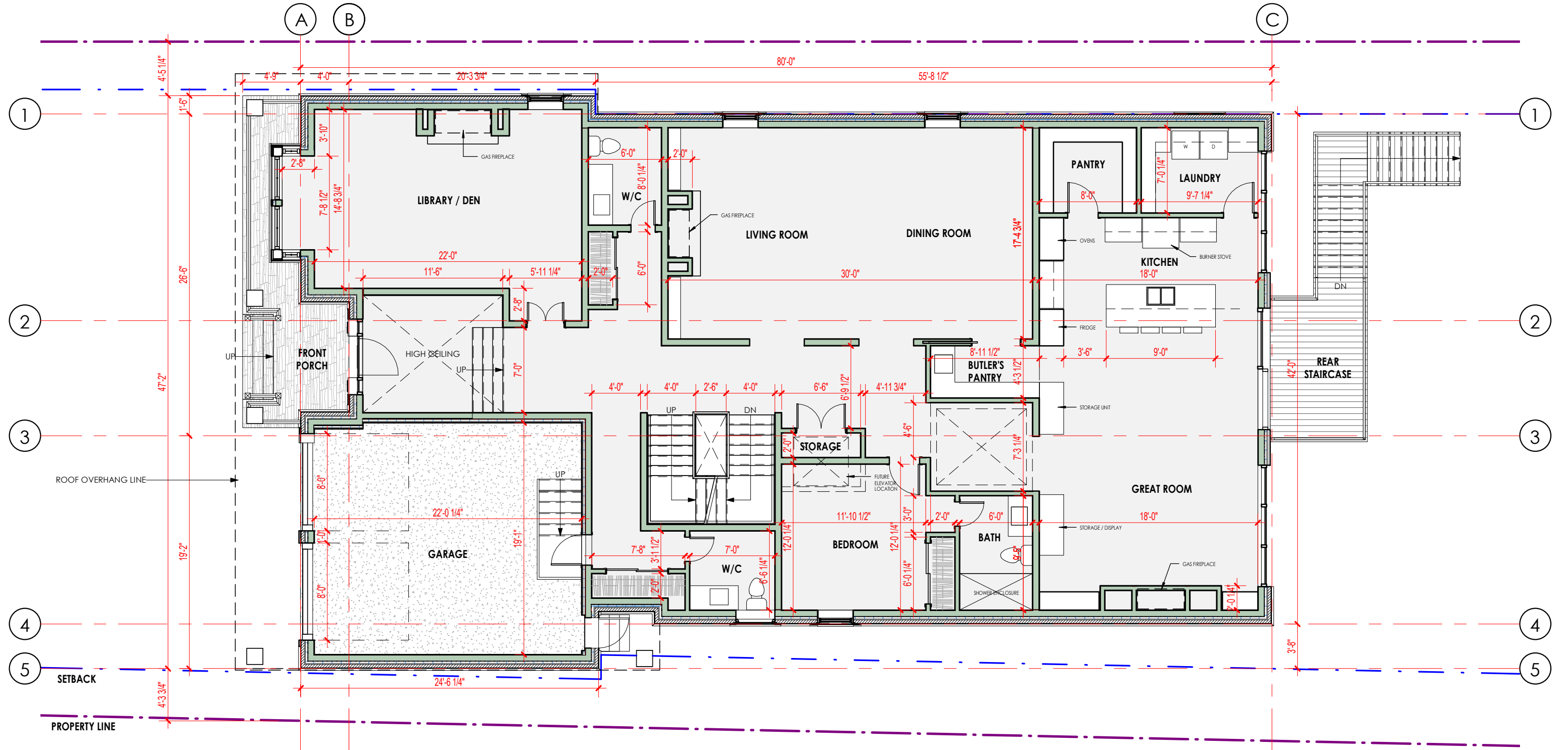
#### GROSS FLOOR AREA (GFA)

PROPOSED GROUND FLOOR = 2993 ft<sup>2</sup> (278 m<sup>2</sup>)  
PROPOSED SECOND FLOOR = 2743 ft<sup>2</sup> (255 m<sup>2</sup>)  
TOTAL GROSS FLOOR AREA = 5736 ft<sup>2</sup> (533 m<sup>2</sup>)  
(WITHOUT GARAGE)  
GFA OF PROPOSED GARAGE = 479 ft<sup>2</sup> (44.5 m<sup>2</sup>)

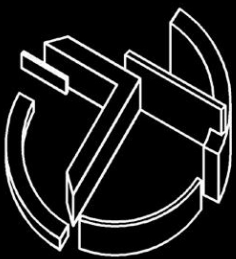
ATA ARCHITECTS

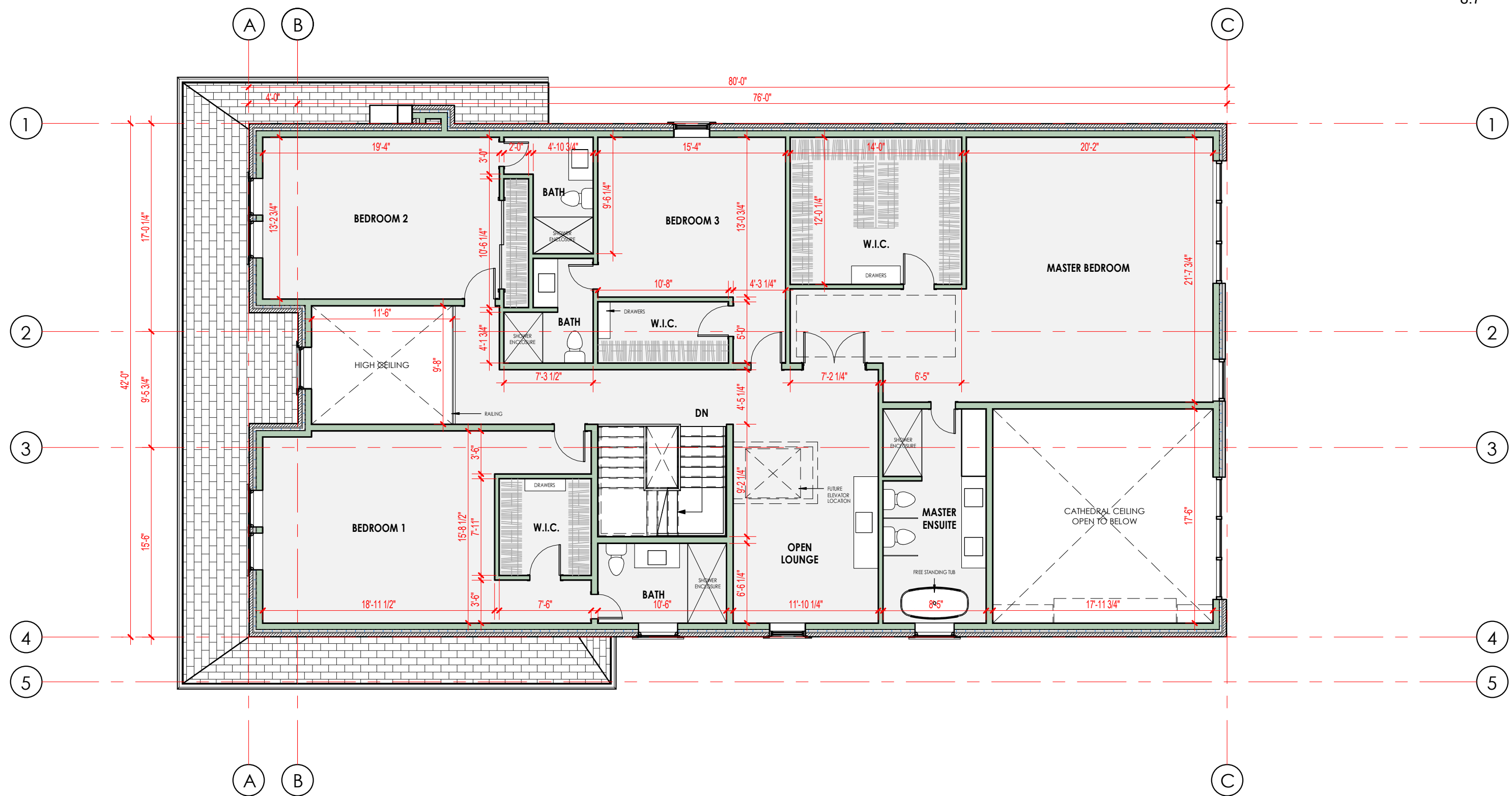
# 347 QUEEN STREET SOUTH, MISSISSAUGA SITE PLAN OF PROPOSED CONSTRUCTION





SCALE 1/18" = 1'-0"



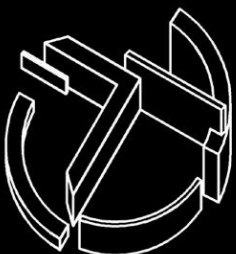


SCALE 1/18" = 1'-0"

ATA ARCHITECTS

# 347 QUEEN STREET SOUTH, MISSISSAUGA

## SECOND FLOOR PLAN

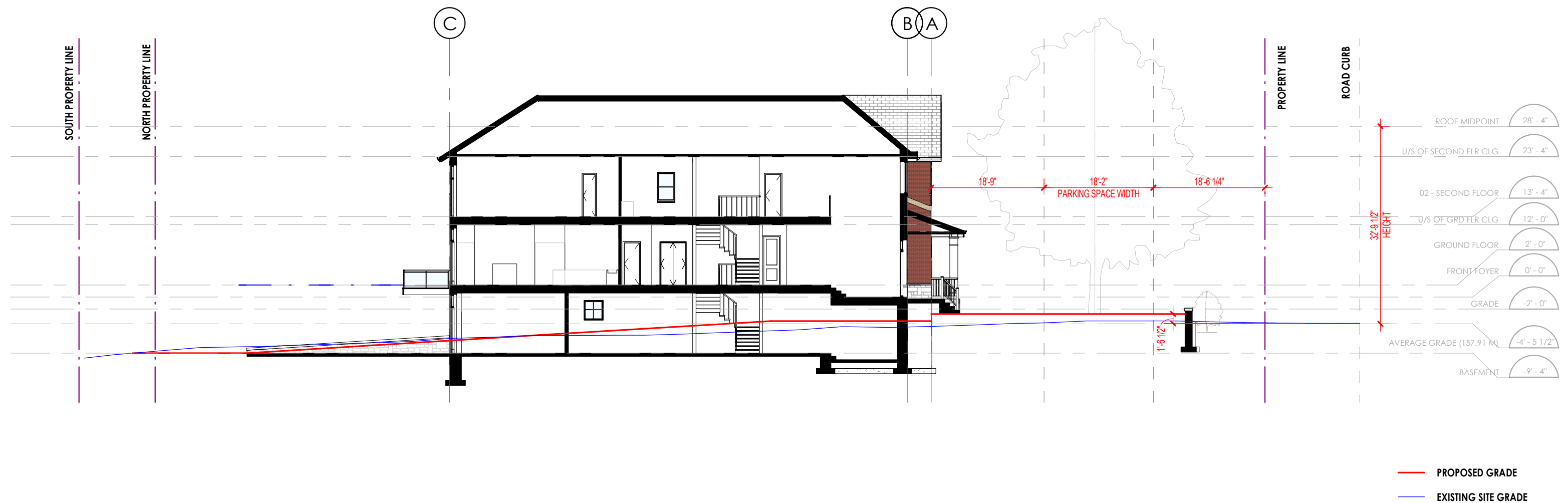


**DEFINITION:****HEIGHT**

MEANS, WITH REFERENCE TO THE HEIGHT OF A DETACHED, SEMI-DETACHED, DUPLEX OR TRIPLEX, THE VERTICAL DISTANCE BETWEEN THE AVERAGE GRADE AND:

(2.2) THE MEAN HEIGHT LEVEL BETWEEN THE EAVES AND RIDGE OF A SLOPED ROOF. (0325-2008), (0174-2017)

**MAXIMUM HEIGHT ALLOWED:** 35'-1" (10.7 m)  
(TABLE 4.2.1, ZONING BY-LAW)



SCALE 1/16" = 1'-0"

ATA ARCHITECTS

347 QUEEN STREET SOUTH, MISSISSAUGA  
SITE SECTION





SCALE 3/16" = 1'-0"

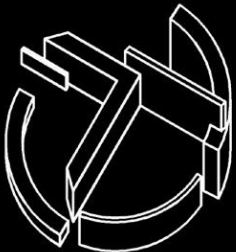


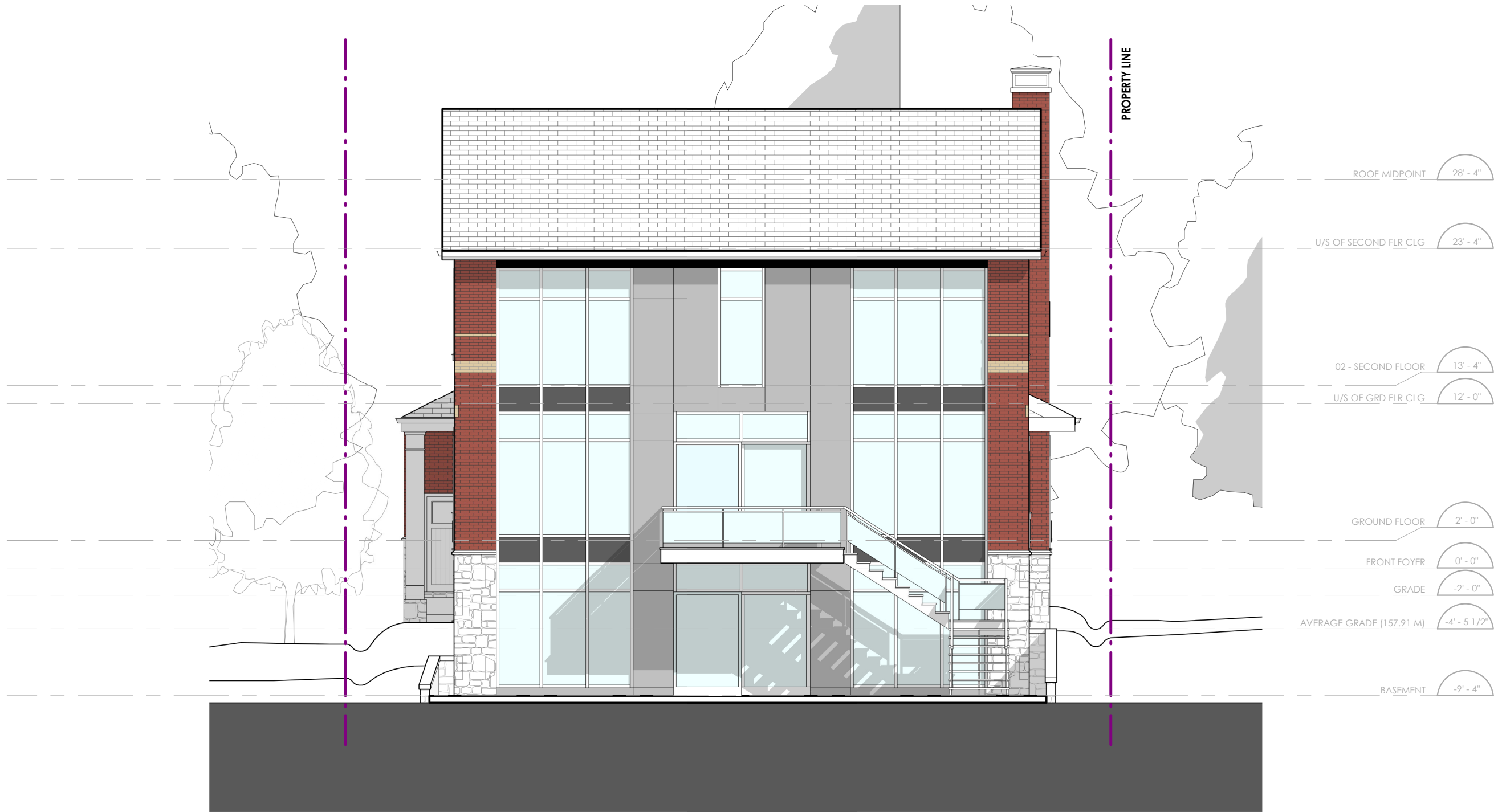


SCALE 1/16" = 1'-0"

ATA ARCHITECTS

347 QUEEN STREET SOUTH, MISSISSAUGA  
PROPOSED SOUTH ELEVATION

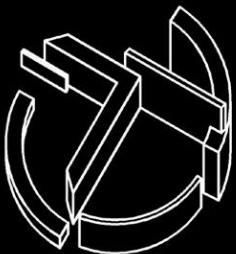




SCALE 1/16" = 1'-0"

ATA ARCHITECTS

347 QUEEN STREET SOUTH, MISSISSAUGA  
PROPOSED BACK ELEVATION





SCALE 1/8" = 1'-0"

ATA ARCHITECTS

347 QUEEN STREET SOUTH, MISSISSAUGA  
PROPOSED NORTH ELEVATION

