

# Deputation for The City of Mississauga, Environmental Action Committee

Presented Nov. 2, 2021

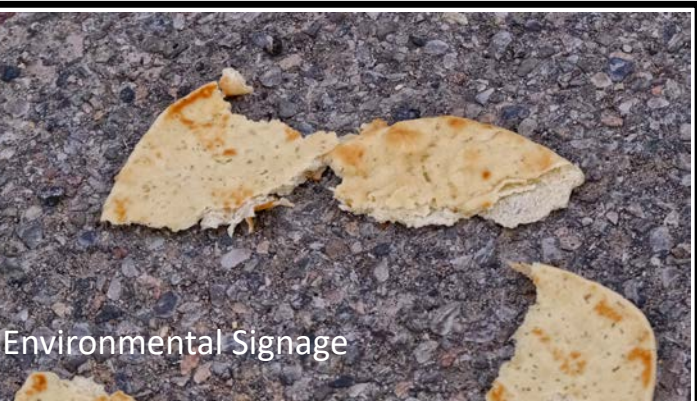
By Julie Knox

# DEPUTATION TOPICS

- Wildlife & Waste Management in Parks & Tourist Areas
  - Environmental Signage
  - Wildlife and Fire Proof Park Waste Bins at Fixed BBQ/Picnic Areas
- Improved Bin Design Or Pick-up Schedule of Street and Regular Park Area Waste Bins in Tourist Areas
- No-mow Policies & Initiatives
- Bird-deterrence Policies and Bird-friendly Initiatives
- Impact of Fireworks on Wildlife



# CURRENT SIGNAGE



Wildlife & Waste Management in Parks & Tourist Areas: Environmental Signage



# CELEBRATE, EDUCATE & ADVISE OF DANGERS

## Environmental Park Signage Example

### 5.1 If you should come across a sick or injured animal please call **311**

#### How feeding Wildlife Impacts the Environment & How You Can Help...

- Birds suffer malnutrition and can die when fed human foods like bread and crackers.
- Feeding wild animals impairs their natural ability to forage for their own nutritional foods.
- Waste or poop from animals who are fed human food is toxic and destroys natural habitats.
- Overcrowding of wildlife occurs when animals are fed by humans on a regular basis. Overcrowding further depletes natural food resources that wildlife depend on.
- Feeding wildlife promotes aggressive behaviour and draws wild animals closer to unsafe human activities.
- Leaving food or garbage out for wildlife contributes to the spread of deadly diseases such as Mange and Distemper in Coyote, Fox, Mink, Squirrel, Skunk and Raccoon populations. If you are unable to find a secure garbage bin in your park area take your food waste home with you for proper disposal.
- Fishing line, hooks and lead weights left behind have fatal consequences on wildlife. Accidentally swallowing one led pellet can kill an animal. Do not abandon your fishing gear.
- Keep your pets on leash and close by at all times while visiting parks and outdoor spaces. Domestic pets are either a natural threat or natural food source to wild animals. Pet encounters with wildlife can end tragically.

#### The Coyote

Coyotes are a natural part of the urban landscape. Wild animals including Coyote generally do not attack humans unless they feel threatened. If you have a close encounter with a Coyote or other wild animal remain calm, speak firmly letting the animal know you are leaving the area. Don't run but leave the area slowly while facing the animal. Most wildlife encounters take place peacefully when space is respected. If you have been bitten by any wild animal seek medical attention immediately. To avoid aggressive behaviour in wild animals do not feed or approach them and keep your pets on leash at all times.

#### The Trumpeter Swan

The Ministry of Natural Resources began restoration efforts in 1982 to help grow the Trumpeter Swan population. The Trumpeter Swan (black beak) is a native species in Ontario but was nearly extinct by the late 1800's due to unregulated environmental and hunting practices. Wildlife volunteers continue to monitor Trumpeter Swan populations today. In 2021 it was estimated that the Trumpeter Swan population was nearly equal to that of the invasive and more aggressive Mute Swan (orange beak). The Trumpeter Swan migrates north in early spring and returns to this area in early Winter. If you should see a sick or injured Swan please call 311. Do not feed the Swan. All Swan species are Federally protected.

يُرجى عدم إطعام الحيوانات

**DO NOT  
FEED**



**WILDLIFE**

不要喂野生动物

Ministry of  
Natural Resources  
and Forestry  
logo

The Region of Peel  
logo

City of Mississauga  
logo

CVC  
logo

For more on  
Ontario  
Wildlife



# CELEBRATE, EDUCATE & ADVISE OF DANGERS

## Coyote Management Park Signage Example

5.1

## Caution



### Coyote in the area

#### Co-Existing with Coyotes

With a few simple actions we can help reduce conflicts between people, pets and coyotes. Coyotes are valuable to our urban ecosystems and are well adapted to living in cities. They are naturally wary of people but if they feel threatened they may act aggressively.

Take particular caution in spring and summer during denning season.

#### If you encounter a coyote up close

**Be calm, stay in control and speak loudly**

- Do not run or panic
- Maintain eye contact as you calmly leave the area
- Use a firm, loud alpha voice while communicating your intentions to the coyote

#### Never feed coyotes

**Fed coyotes can become aggressive**

- Securely dispose of all food waste
- Store food and feed pets indoors

#### Pet Safety

- Walk dogs on a short leash
- Never let dogs interact with coyotes
- Pick up small dogs if coyotes approach
- Supervise pets while unleashed in yards
- Keep cats indoors especially at night

Do not feed  
wildlife



Keep your  
dog on short leash



**Report sick, injured or aggressive wild animals by calling 311**





# Mange

**311**

A critical component to environmental signage



# Distemper

**311**

A critical  
component to  
environmental  
signage



5.1



# Ideal Size – 23x25



Wildlife & Waste Management in Parks & Tourist Areas



Environmental Signage



# ENVIRONMENTAL PARK SIGNAGE – Key Components

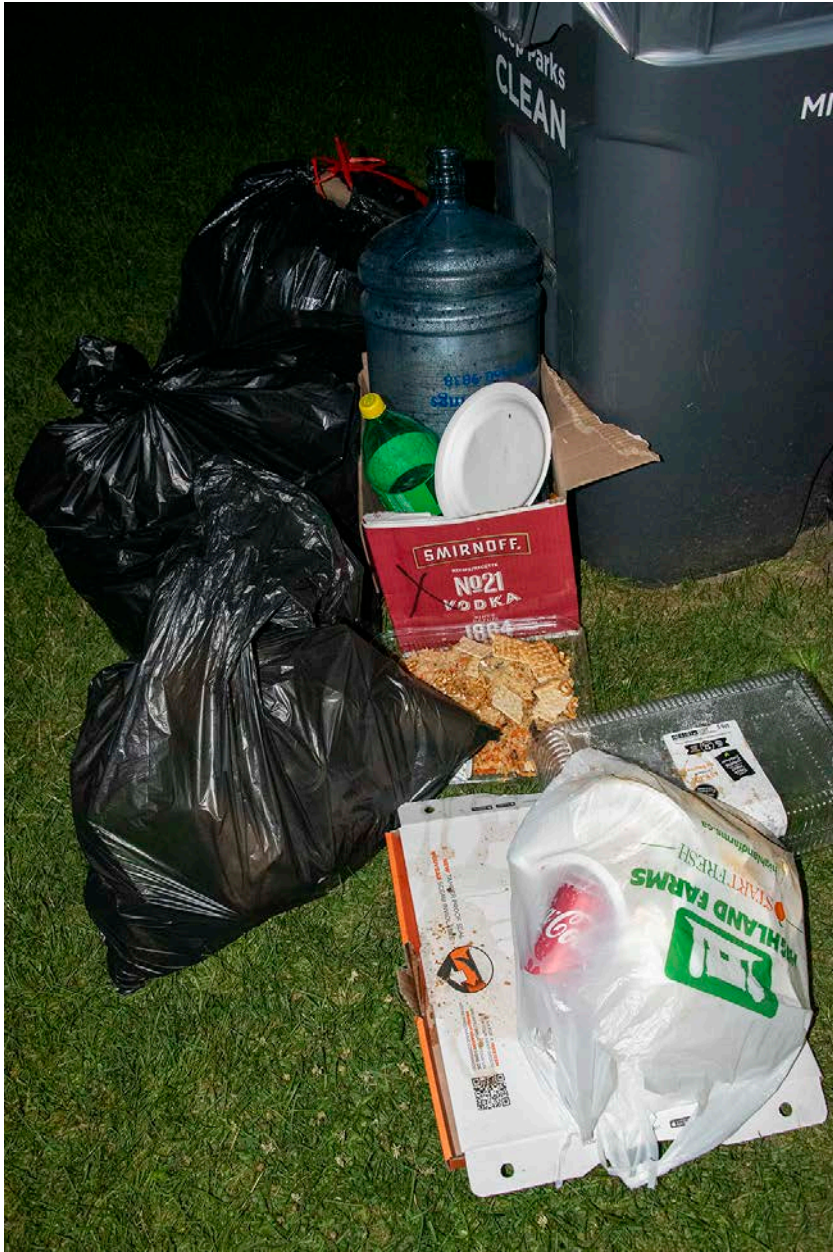
- Protects wildlife
- Protects the environment/water ways
- Protects community
- Protects pets
- Facilitates diverse understanding that can be applied to overall knowledge of our environmental impact\*
- Advises by-law and enforcement
- Advises who to call for help
- Advises where to go to learn more (QRL link)



# Food waste left out overnight

Toronto Wildlife Centre report an increase of Mange and Distemper in recent years

[Transmission of Distemper:](https://pets.webmd.com/dogs/canine-distemper-1)  
<https://pets.webmd.com/dogs/canine-distemper-1>







Leaving food out or feeding wildlife promotes aggressive behavior in wild animals

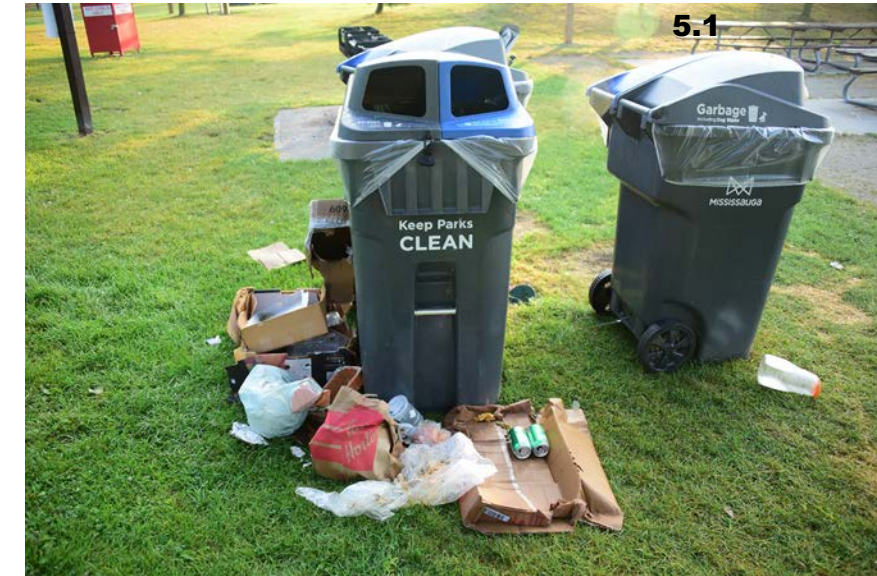
Potential consequences of not being informed about your surroundings...

[Small dog injured by coyote while being walked by a small child.....](#)

[CTV News, September 21 -Despite plan to cull dozens of coyotes, Vancouver's Stanley Park fully reopens after only 4 killed...](#)



# Food waste scavenged through overnight



Sunday, August 29, 2021  
Before 8AM





# FIRE PROOF

- fireworks
- hot coals
- vandalism

Tuesday Morning after Labor Day. 3 Fires in J.C. Saddington Park



Wildlife & Waste Management in Parks & Tourist Areas



Wildlife and Fire Proof Park Waste Bins at Fixed BBQ/Picnic Areas



# WILDLIFE AND FIRE PROOF WASTE BINS – Key Components

- Ideally, recommended environmental signage would accompany bin placement or be in the vicinity of fixed BBQ/picnic areas
- By-law enforcement would continue
- Bin openings are large enough to fit full sized bags of garbage
- Bins hold multiple bags of large size garbage
- Provides complete closure



BEARSAVER - HID-A-BAG DOUBLE TRASH ENCLOSURE, 140 GAL - HB2-P



## National Parks of Canada Garbage Regulations

[https://laws-lois.justice.gc.ca/eng/regulations/SOR-80-217/page\\_1.html](https://laws-lois.justice.gc.ca/eng/regulations/SOR-80-217/page_1.html)



<https://bearsaver.com/collections/bear-resistant-hid-a-bag-trash-cans-and-recycle-bins/products/bearsaver-hid-a-bag-double-trash-enclosure-hb2-p>

Wildlife & Waste Management in Parks & Tourist Areas: Environmental Signage +  
Wildlife and Fire Proof Park Waste Bins at Fixed BBQ/Picnic Areas

## RECOMMENDATIONS FOR WASTE BINS IN PARK AREAS AT FIXED BBQ/PICNIC AREAS

- Sealed for wildlife and environmental management
- Metal or steel in areas where fixed BBQ/Picnic tables and other high volume day picnic areas
- Accompanied by signage as recommended in this deputation
- Enforcement during key times (before sunset, during long weekends, etc...)

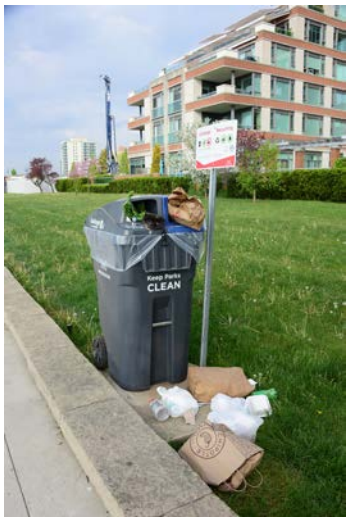
## RECOMMENDATIONS FOR WASTE BINS IN ALL OTHER PARK AREAS AND STREETS

- Sealed for wildlife and environmental management
- Or
- Updated waste pick-up schedule (late evening pick-up)





Improved Bin Design  
Or Pick-up Schedule  
of Street and Regular  
Park Area Waste Bins  
in Tourist Areas



Improved Bin Design Or Pick-up Schedule of Street and Regular Park Area Waste Bins in Tourist Areas



Sealed  
Waste Bins  
or  
Improved  
Pick-up  
Schedule in  
Tourist  
Areas







Improved Bin Design Or Pick-up Schedule of Street and Regular Park Area Waste Bins in Tourist Areas





## LOCAL BUSINESS WASTE BINS



## BIA Partnership & By-law Enforcement



Improved Bin Design Or Pick-up Schedule of Street and Regular Park Area Waste Bins in Tourist Areas



# PARK SIGNAGE & WASTE MANAGEMENT

## Sponsorship & Support – A Shared Responsibility

- Festivals and BIA - events promoting tourism to the area
- Developers supporting promoting visitation and tourism to the area
- Local restaurants
- International store chains
- Tax dollars - Federal, Provincial, Regional, Municipal, Conservation Authorities



# NO-MOW POLICIES & INITIATIVES

## Lakeview Hydro Corridor & Beyond



[Opportunities and threats for pollinator conservation in global towns and cities](#)

[Insect Decline—A Forensic Issue?](#)

[The “No Mow May” Challenge is on!](#)



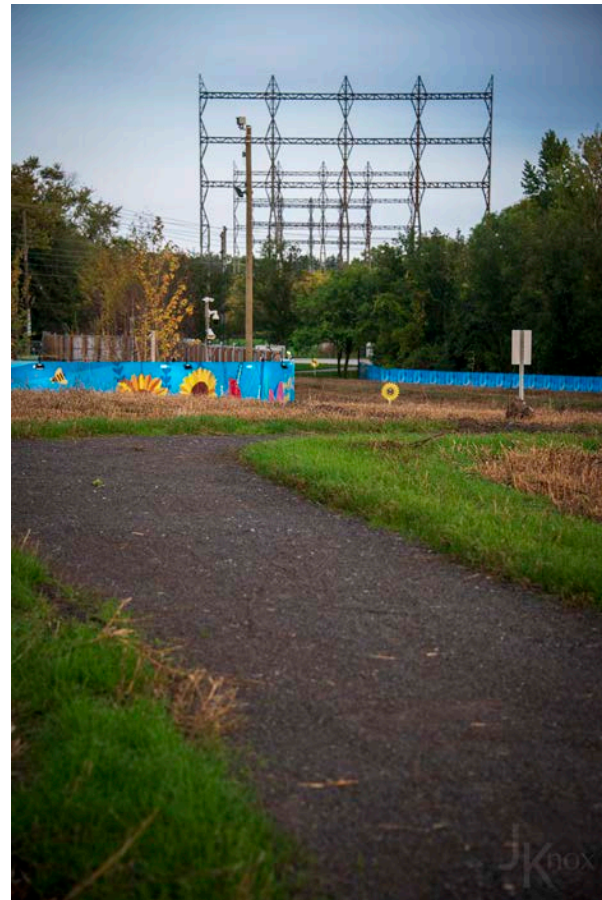
# BIRD-DETERRENCE POLICIES



## Lakeview Village Sales Office

Situated within hydro Corridor flight/wildlife path and adjacent to Searson Creek

- Dorm style window design itself is a Hazard to birds\*
- Bird friendly mechanisms not in place adjacent to rooftop garden
- Fenestration method is questionable. Spacing could still be perceived as pathway. Glass still highly reflective.





# Legislative changes...

[Published July, 2021 - Bird-window collisions: Mitigation efficacy and risk factors across two years](#)

“An important possibility for increasing bird protection lies in legislation and new building standards that require bird-friendly windows ([American Bird Conservancy, 2021a](#)), which have been adopted by places such as New York City ([New York City Department of Buildings, 2020](#)). To create more citizen support of such policies, it will be important to educate citizens about the magnitude of the threats facing birds and to demonstrate that policy and design standards can reduce the threats.”

[Green Development Standards - Mississauga](#)



“Where a green roof is constructed adjacent to glass surfaces, ensure that the glass is treated to a height of at least 12 m (40 ft) above the level of the green roof, to prevent potentially fatal collisions with windows.”

- PDF is slightly disorganized and information on bird deterrence mechanisms is limited compared to other city guidelines and best practices

[Bird Friendly Best Practices - Toronto](#)

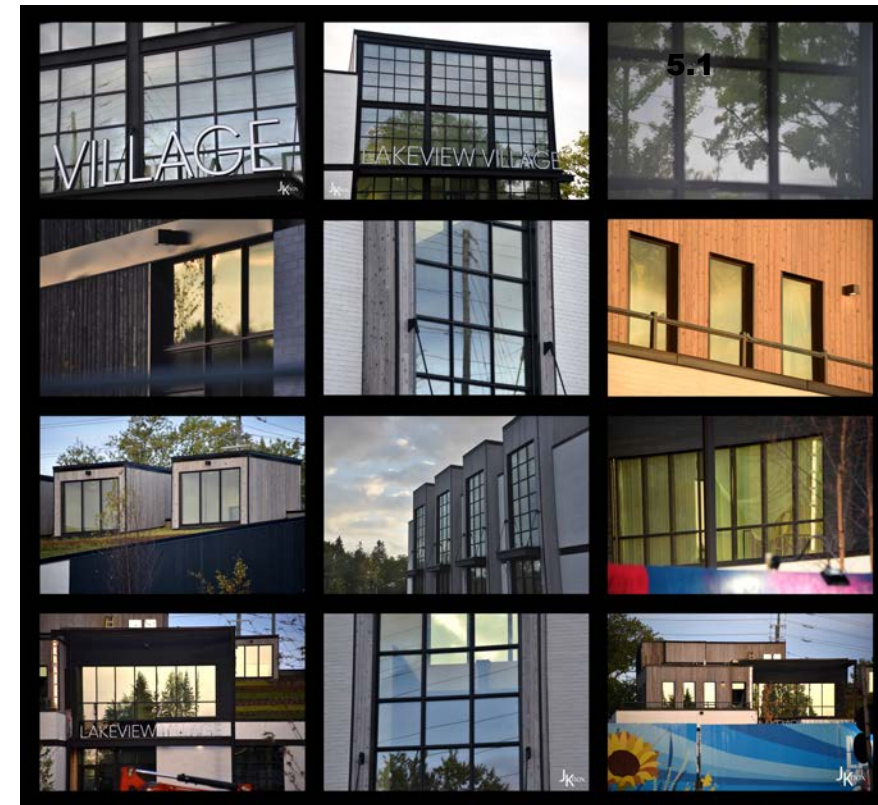
- Fairly comprehensive





# Holding Developers to their word and higher standards of environmental considerations

Bird-deterrence Policies and Bird-friendly Initiatives





## BIRD-FRIENDLY INITIATIVES

Sample Initiative; Port Credit Royal Canadian Legion partnering with Riverside Public School to design and install bird of prey decal for glass balcony at the Legion, for their own windows and for other business, organizations and homes situated along the Credit River.





# Impact of Fireworks on Wildlife

[Video record of bird activity at the Credit River during Fall 2021 fireworks display...](#)

Recorded at Mineola at the Credit River during the first two minutes of the display

[Toxicity of particles emitted by fireworks.....](#)

[Radar tracings of birds exploding into flight during 2017-2018 NYE fireworks show.....](#)

[Birds flee en mass from New Year's Eve fireworks.....](#)