

# District Energy in the Downtown: Update

**Environmental Action Committee**

December 7, 2021



# Components of a District Energy System



Source: FVB Energy Inc.

1. A **central plant** that produces hot and cold water
2. Hot and cold water **storage** can be added to maximize efficiency
3. Underground **distribution pipes** carry hot and cold water to buildings
4. **Energy transfer stations** in each building connect the building to the district energy system

# DE in Mississauga

**2013**

DE Screening Study completed,  
identifying top nodes for DE in  
Mississauga



**2009**

DE included in “Strategic  
Actions for Future  
Consideration” in Strategic  
Action Plan

# DE Screening Study

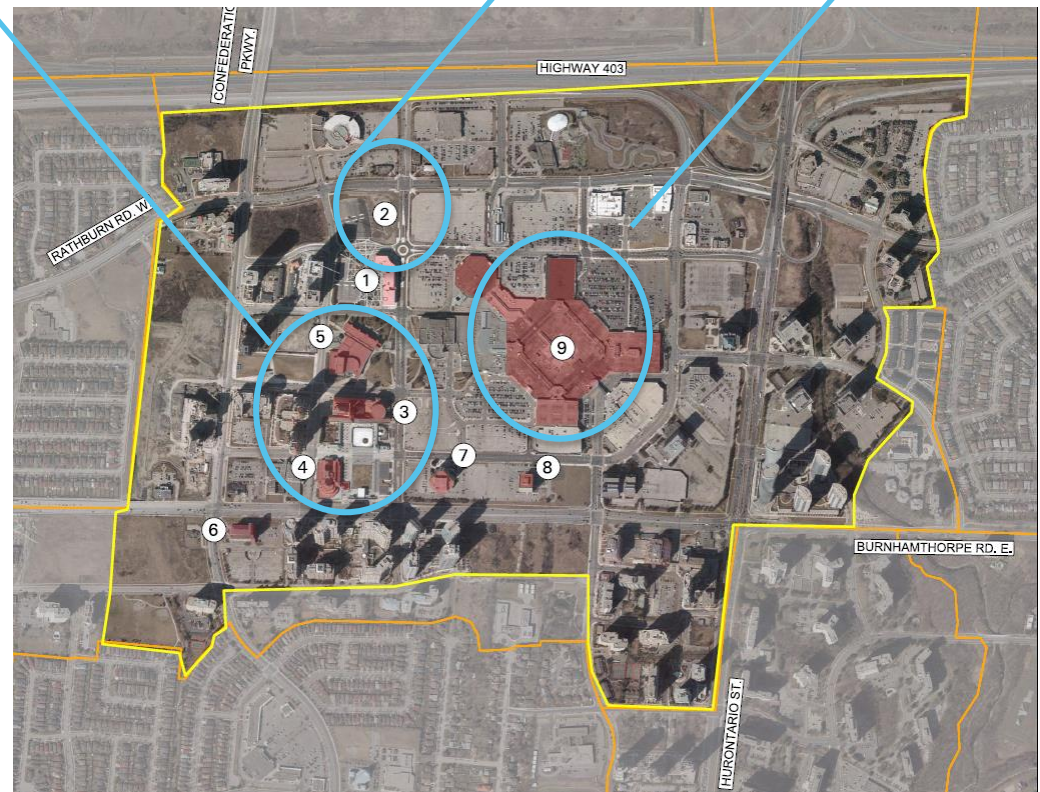
## City-Owned Buildings

- 3: City Hall
- 4: Central Library
- 5: Living Arts Centre

- Completed in 2013
- Identified top candidates for district energy
- Downtown ranked first

Sheridan College

Square One



# DE in Mississauga

**2013**

DE Screening Study  
completed

**Dec 2019**

Council approves Climate  
Change Action Plan



**2009**

DE included in "Strategic  
Actions for Future  
Consideration" in Strategic  
Action Plan

# Climate Change Action Plan: Actions

- Conduct a study to determine if district energy is feasible in Downtown Mississauga



# DE in Mississauga

**2013**

DE Screening Study completed

**Dec 2019**

Council approves Climate Change Action Plan

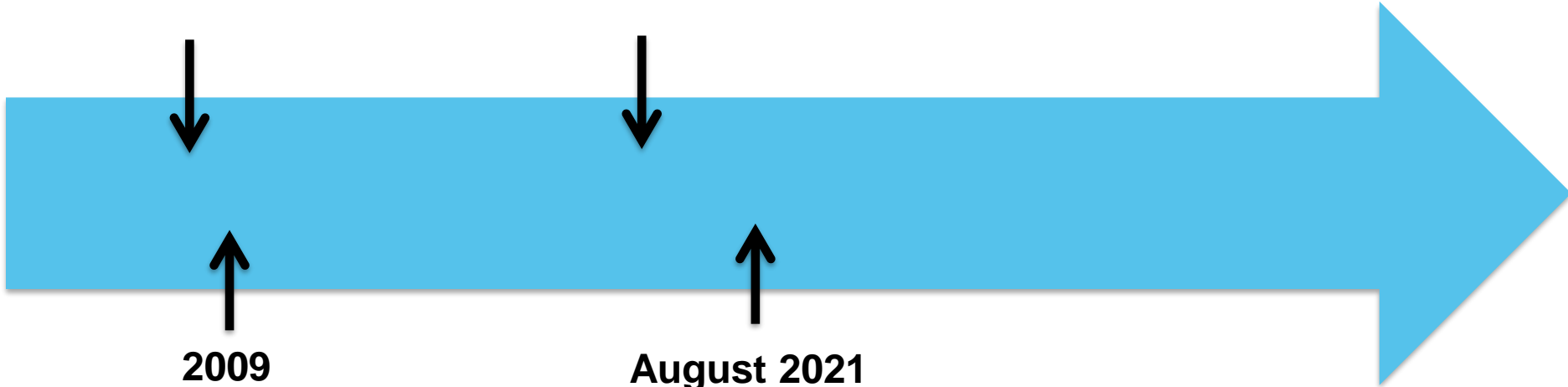


**2009**

DE included in "Strategic Actions for Future Consideration" in Strategic Action Plan

**August 2021**

Feasibility study starts



# Feasibility Study: Participants



- City has hired consultants to complete district energy study
- Representatives across the City part of a working group



- Consultant
- District energy experts



- Consultant
- Land use planning & engagement experts

## Others

- Property owners in the Downtown
- Region of Peel
- Utilities
- City of Toronto
- General Public



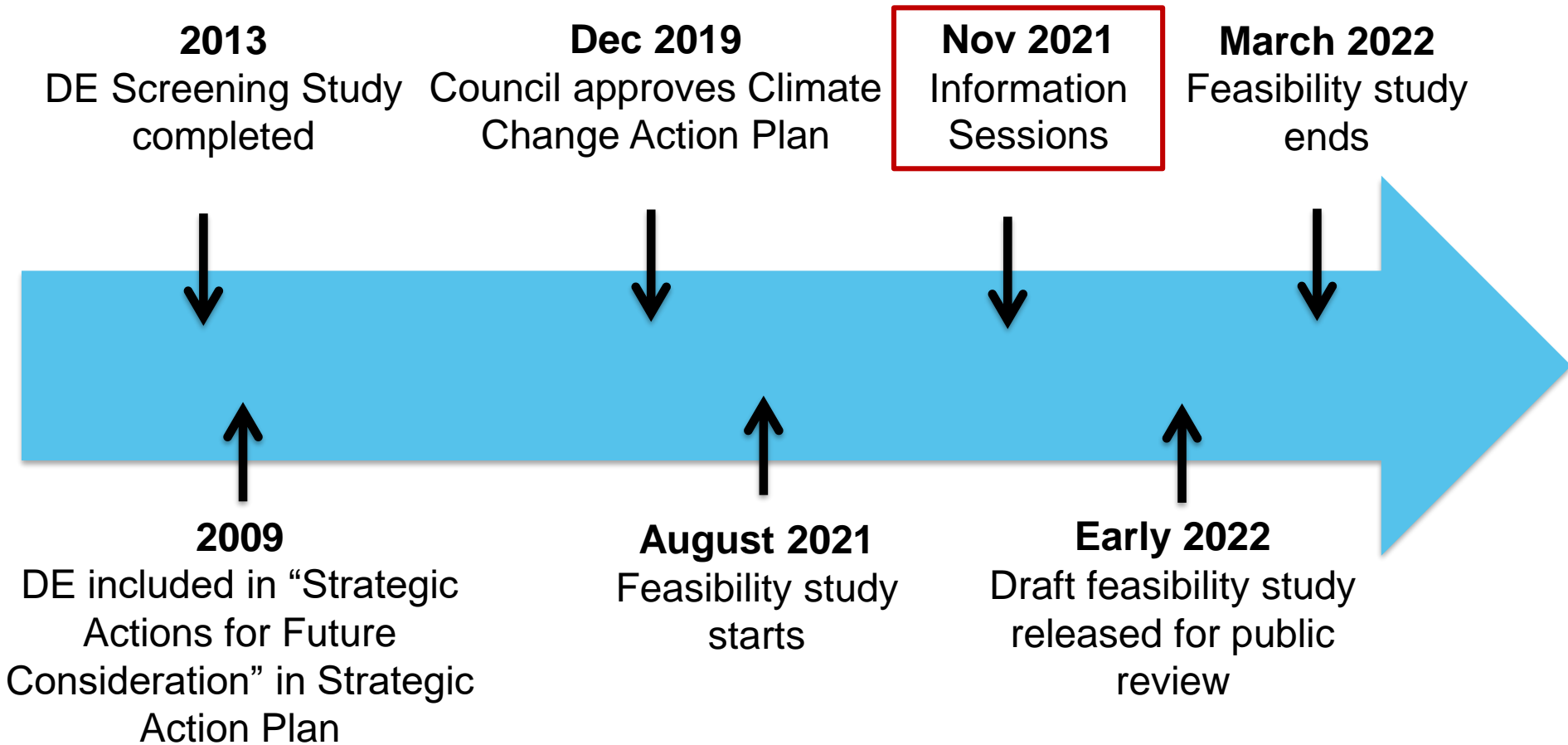
# District Energy Feasibility Study: Study Area



# District Energy Feasibility Study: Overview

- Determine which buildings could connect to district energy
- Identify location for plant(s)
- Propose initial pipe routing and phasing
- Screen potential renewable technologies
- Look at the business case

## DE in Mississauga



# DISTRICT ENERGY



Learn more at [yoursay.mississauga.ca/district-energy](https://yoursay.mississauga.ca/district-energy)

- Sign up for email updates
- Find contact information
- Keep up-to-date (e.g., next public session)

**Funding support from:**



**THANK YOU!**

Teresa Chan

[teresa.chan@mississauga.ca](mailto:teresa.chan@mississauga.ca)

