

MiDON PILOT PRESENTATION



For EAC Mississauga

Science Gaming Platform

Data Analytics Engine

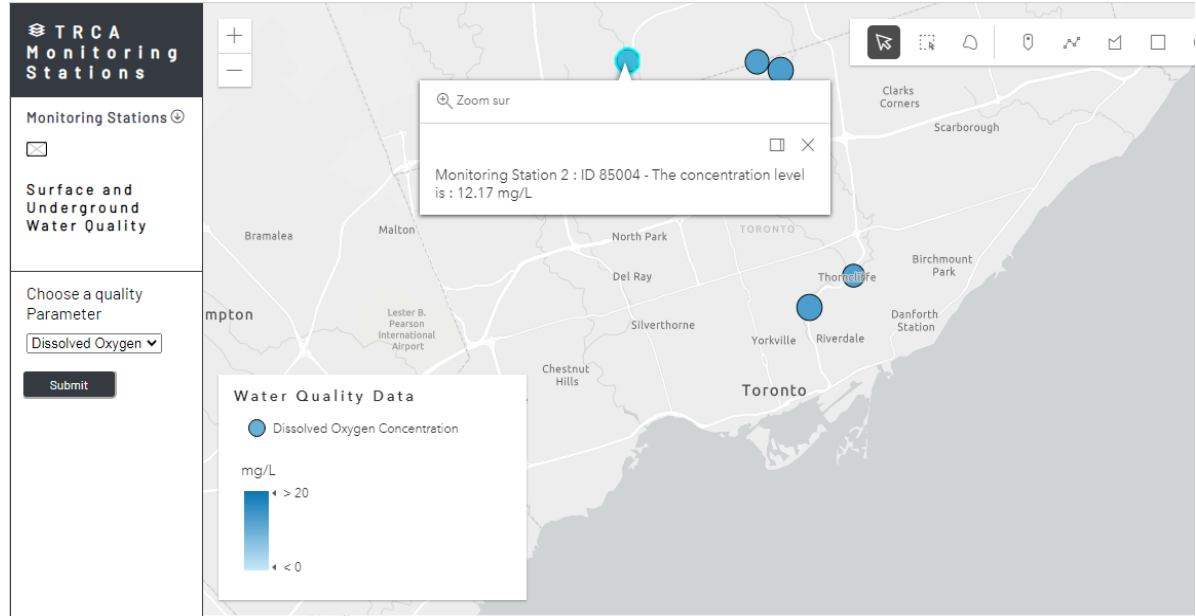
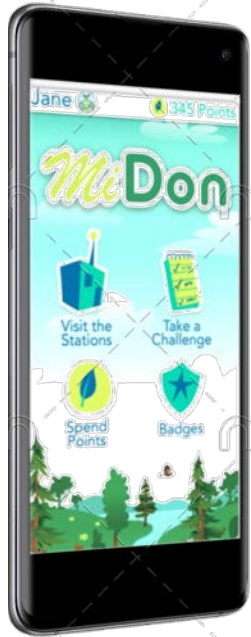
Educational Technology

Capabilities



- + Introduces MiDON as a premium gaming platform that connects science/water curriculum activities with real-time engineering data from conservation agencies and development projects within a city.
(Eg.. Waterfront Data)
- + Encourages users to go outdoors to experience the environment in a fun way to empower citizens scientists.
- + Compares current Ecosystems with past ones and draws inferences about environmental change using the timeslider.

Connects Technology with Natural Solutions



FEATURES

EDUCATIONAL CURRICULUM Mapping

Connects the educational curriculum activities and ideas with the MiDON platform to enhance the joint understanding of technology and nature.

TRADITIONAL KNOWLEDGE

A unique feature to compare and draw conclusions on environmental traditional knowledge using the timeslider.



USERS SHARE EXPERIENCE

Users can create a network to monitor this green space becoming citizen scientists with valued observations.

AR/ GAMING PLATFORM

A premium gaming platform that connects engineering/ water data from real projects with a virtual ecosystem /

GIS/ DATA ANALYTICS ENGINE

Web based application that maps and processes Realtime water data to provide conclusions on virtual ecosystems and traditional knowledge.

OPPORTUNITIES

**Conservation Ontario Open Data
Day/DataStream Smart Lakes initiative**

**Geographic Information System/Source Water
Protection and Climate Change Case Study**

**Go Open Data annual conference/City of
Mississauga will host GOOD22, April 21-23**

THANKS

For this opportunity to present
MiDON to you today.

Questions?

Alice Casselman B.Sc.,M.O.Ed.
alice.casselmann37@gmail.com
905-601-7685

Jnathan Brown B.A.,M.A.s
jnabrow@gmail.com
289-829-0812



Some water monitoring stations in Mississauga

