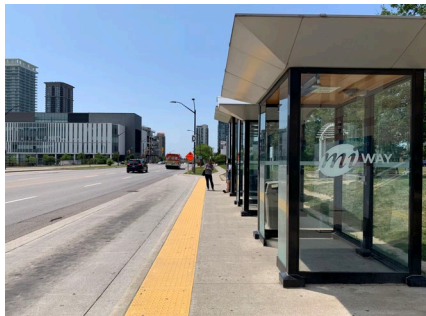




MiWay's Enhanced Shelter Program

Infrastructure Direction

Comprehensive barrier-free transit infrastructure that enhances the customer experience, attracts new passengers, and strengthens the connection between land use and transit.



Barrier-free infrastructure



Enhanced customer experience



Land use and transit connections

Enhanced Shelter Project

Key Attributes

- Heated
- Digitized
- Larger than the existing on-street bus shelters
- AODA/FADS compliant

Funding Parameters

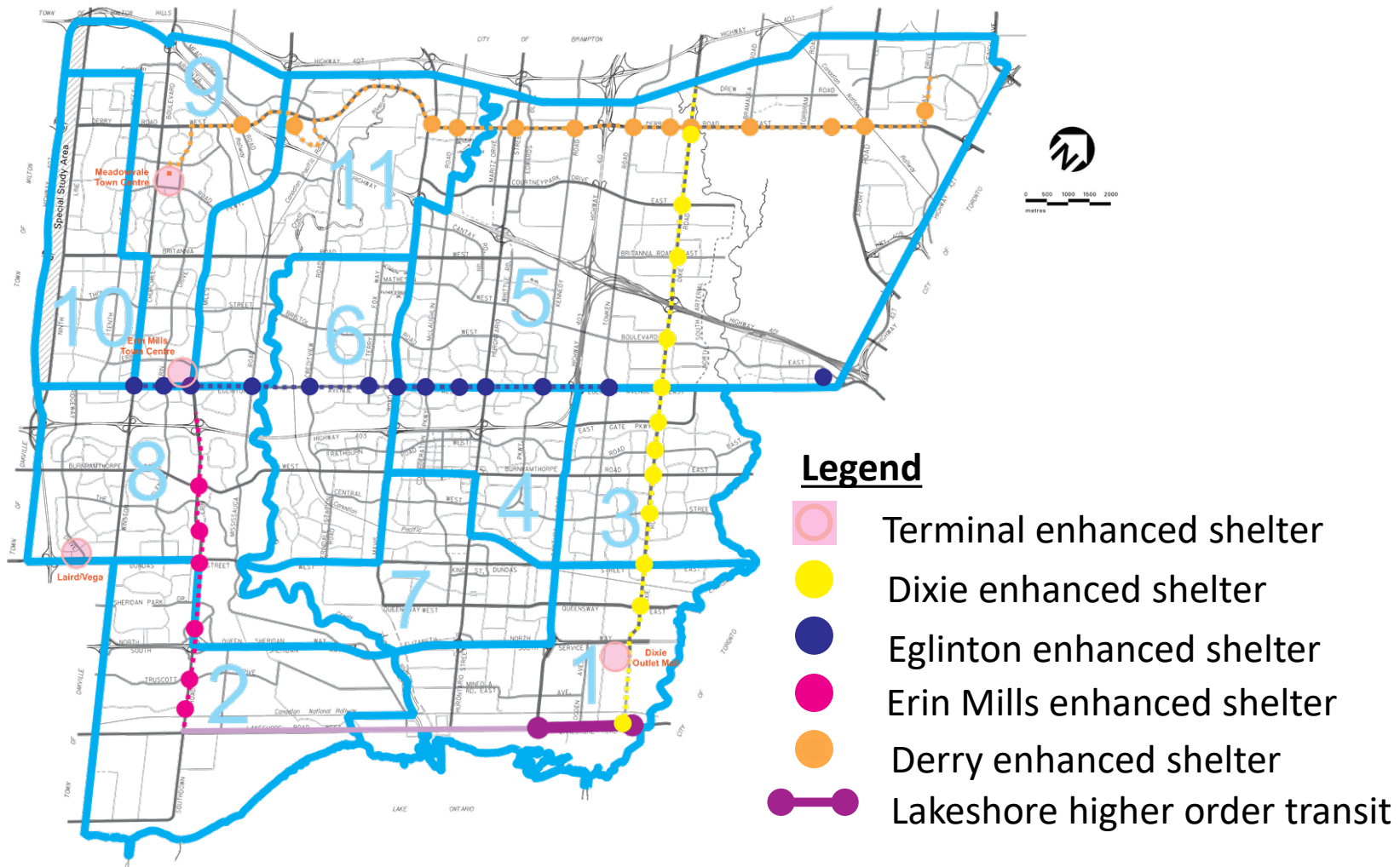
- 88 on-street shelters within existing ROW (e.g., small, medium, large)
- 4 terminal shelters

Implementation Schedule (Completion: March 2027)

| | 2021 | 2022 | 2023 | 2024 | 2025 | 2026 |
|-----------|-----------------|--------------------------------|------|--------------------------------|---------------------------|------|
| On-Street | 4 | 15 | 11 | 17 | 29 | 12 |
| Terminals | 1 Laird/Vega | 1 Meadowvale Town Centre | | 1 Erin Mills Town Centre | 1 Dixie Outlet Mall | |

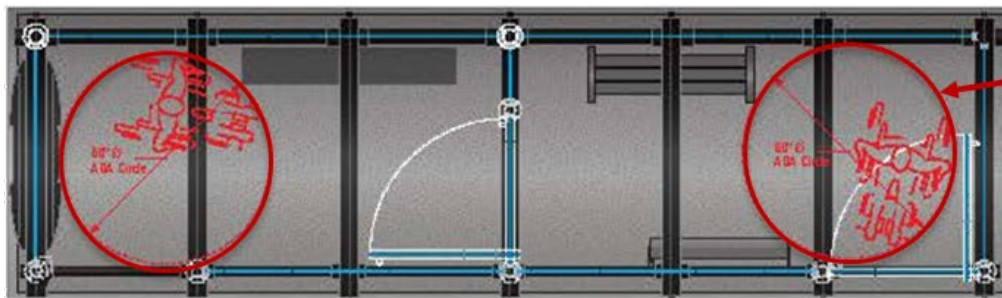
Enhanced Shelter Project Proposed Locations

3.1



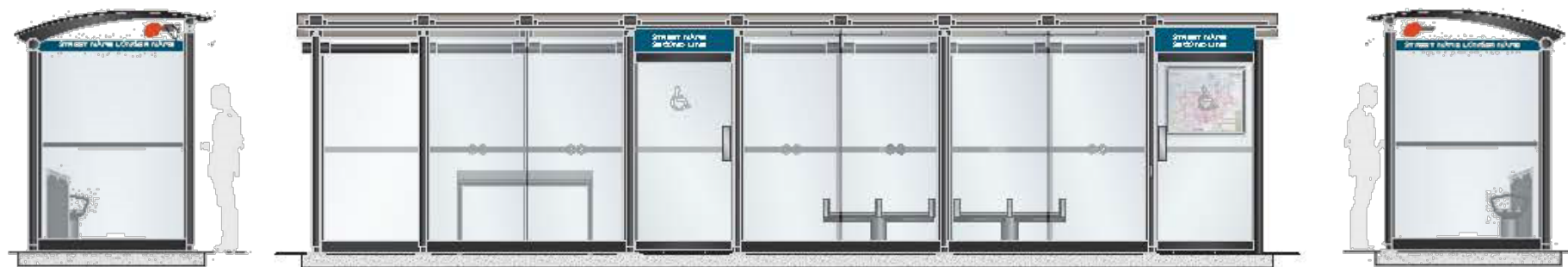
*Final on-street shelter locations to be confirmed pending review.

On-Street Shelter (2m x 8m)

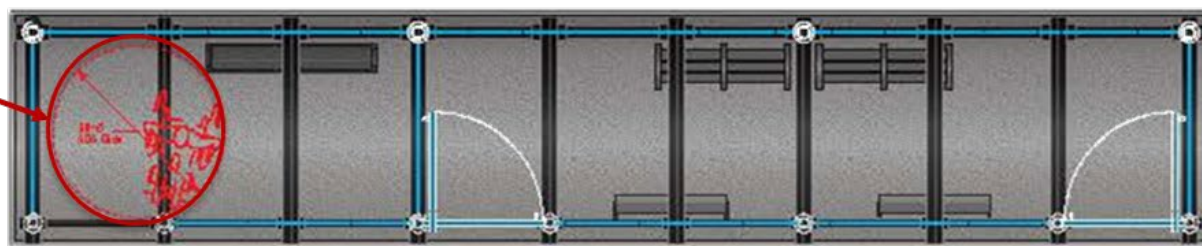


**Accessible
turning
radius**

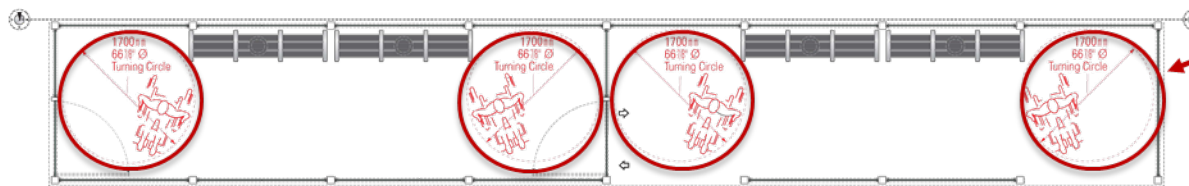
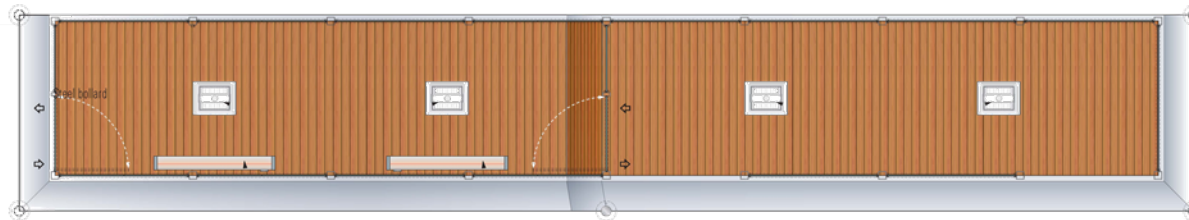
On-Street Shelter (2m x 12m)



**Accessible
turning
radius**



Terminal Shelter (2m × 16m)



**Accessible
turning
radius**