

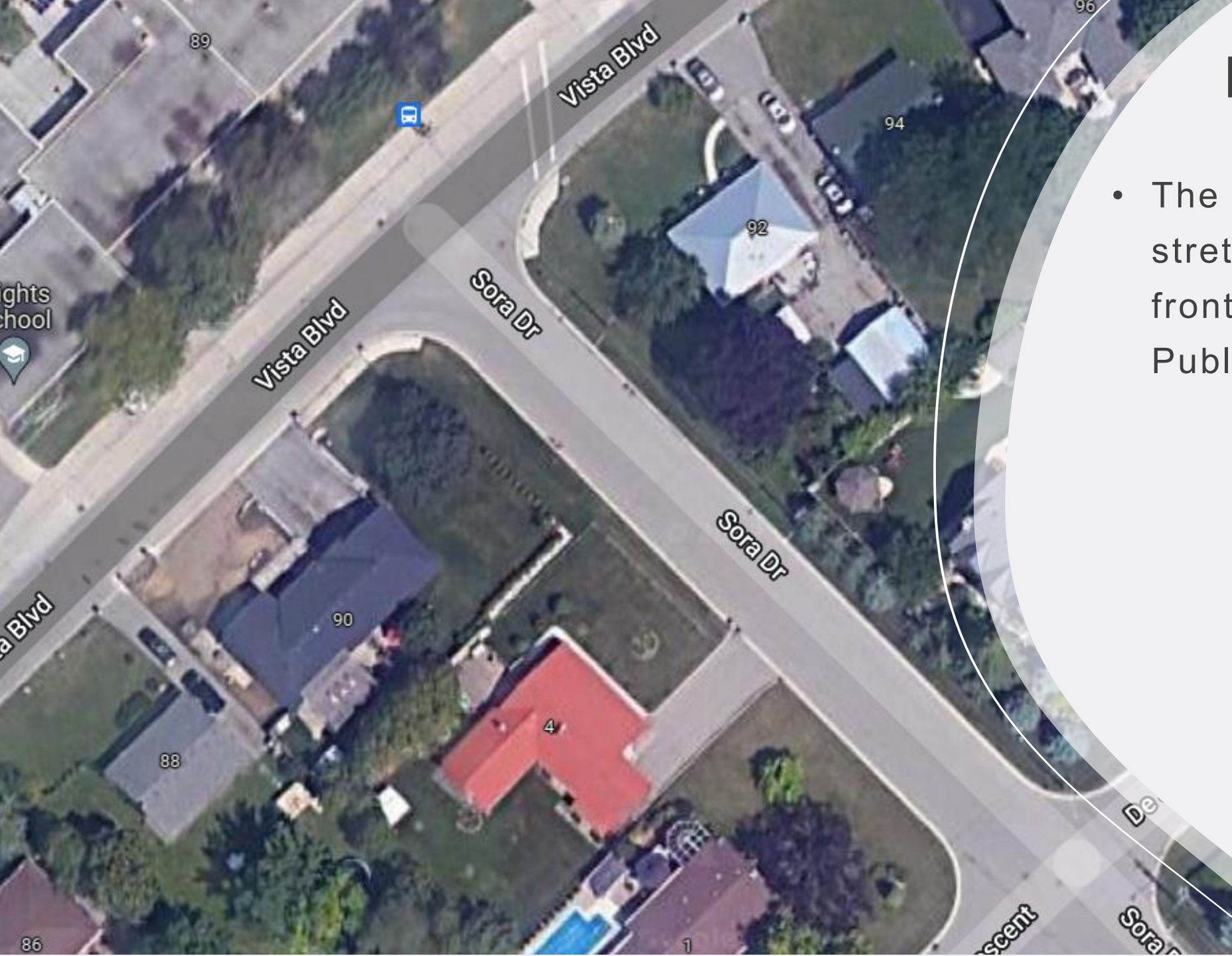
Deputation Traffic Safety Council

Re: Sora Drive Concerns
Vista Heights Public School

March 30th, 2022

Introduction

- We are increasingly concerned about the dangers faced by children in our neighbourhood simply trying to walk to Vista Heights Public School.
- We have been walking our kids to school for the past 6 years and have seen firsthand how dangerous this area has become particularly in the winter months.
- We have witnessed many close calls with children, including our own.
- We have called 311 in the past to express concern and nothing has changed.



Location

6.1

- The area of concern is the stretch on “Sora Drive” in front of Vista Heights Public School.

Issues and Photos

- There are no side walks on this stretch and it becomes increasingly dangerous every winter when there is snowfall because the “walking” boulevard is used to pile excess snow from the road.
- This forces children and parents to walk on the road, competing with cars during busy drop off and pick up times.
- Many cars are illegally parked in unauthorized zones on both sides of “Sora Drive”.
- Vehicles are constantly making U-turns on this stretch, which makes it even more dangerous.







Recommendations

1. More prominent signage for no parking zones on both sides of the road with warnings for fines.
2. School safety zone signage.
3. Install a sidewalk on the East side of Sora Drive.
4. Better snow removal and snow piled on the opposite side of the road to allow parents and children to safely walk the boulevard.
5. Issue tickets more often. Parking bylaw officers need to be present in the mornings for enforcement (9:00am to 9:15am).

Action is Needed!

Please take
action before a
child is seriously
injured.

Thank you for
your time.