

A-5

CENTRE CITY CAPITAL LTD.

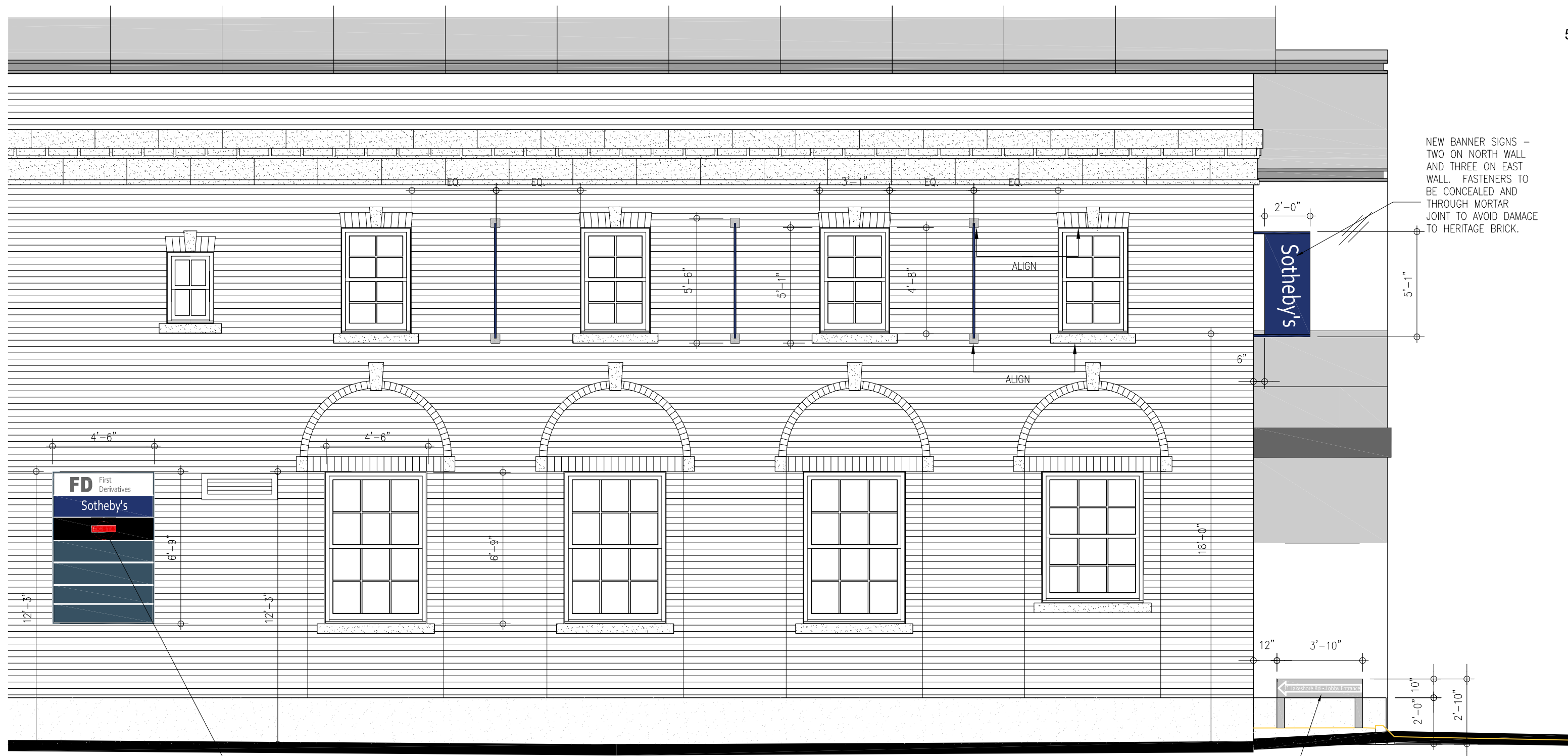
WEST BUILDING ELEVATION - EXISTING AND PROPOSED SIGNS

31 LAKESHORE ROAD EAST

Mississauga, Ontario

DECEMBER.21.2018

adamson
ASSOCIATES | ARCHITECTS



NEW ALUMINUM DIRECTORY SIGN – TO LINE UP WITH TOP AND BOTTOM OF ADJACENT WINDOWS AND TO BE SAME WITH AS ADJACENT WINDOWS. COLOUR OF ALUMINUM BOX TO BE SIMILAR TO WARM GREY OF HERITAGE WINDOW AND DOOR FRAMES. FASTENERS TO BE CONCEALED AND THROUGH MORTAR JOINT TO AVOID DAMAGE TO HERITAGE BRICK.

NEW ALUMINUM WAYFINDING SIGN – PERPENDICULAR TO BUILDING FACE – SIGN BASE TO LINE UP WITH TOP OF BUILDING CONCRETE FOUNDATION WALL – THE PLANTER HAS ORNAMENTAL GRASS WHICH IS EXPECTED TO BE APPROXIMATELY 2'-0" HIGH. THE SIGN BOX ITSELF IS PROPOSED TO BE 10" HIGH SO IT WILL APPEAR TO SIT ON TOP OF THE GRASS AND TO BE VISIBLE TO PEDESTRIANS – THE SIGN WILL HAVE CUT OUT LETTERING ON BOTH SIDES (LED ILLUMINATED FROM WITHIN) SO PEDESTRIAN WILL BE ABLE TO READ IT IF APPROACHING ALONG LAKESHORE ROAD FROM THE WEST OR THE EAST. SIGN COLOUR WILL BE WARM GREY SIMILAR TO COLOUR OF PAINTED HERITAGE WINDOW AND DOOR FRAMES

