

Sign 1

Supply & install One (1) new set of face-lit channel letters and logo on a tube structure

Graphics / Substrate

Poppy Red 3630-143 Vinyl

White SG05 Acrylic faces

Illumination

White LEDs

LED power supplies placed behind parapet in waterproof enclosure

*Power to be brought to sign from "FD" sign on the same elevation

Construction

Channel Letters & Logo

White Acrylic

1" Trimcap c/w anti-blowout clips

5" - .080 aluminum returns

1" x 2" x 1/8" aluminum angle

.125 aluminum backs

Hanging structure

HSS 4" x 4" x 1/4" overhang structure,

HSS 5" x 5" x 1/4" tube, (Galvanized)

2 1/2" x 2 1/2" x 1/4" aluminum tube rails

(round corner)

HSS 2 1/2" x 2 1/2" x 1/4" angle, (Galvanized)

3/4" thick steel match plate

3/8" thick steel gussets

16" x 16" x 1" base plate

1/8" thick steel plate (Galvanized)

Paint

Channel Letters

All exposed metal painted White

Logo

All exposed metal painted to match

Poppy Red 3630-143 Vinyl

Notes

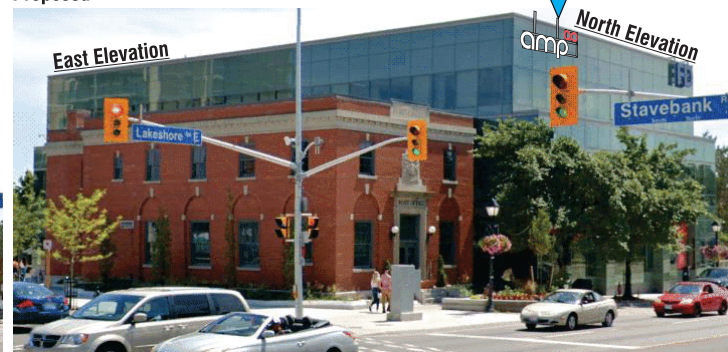
Please using Stainless Steel fasteners

- ☒ Poppy Red 3630-143 Vinyl / Paint
- ☐ White SG05 Acrylic
- ☐ White Paint

Existing



Proposed



www.zipsigns.com
5040 North Service Rd. Burlington, ON
Ph. 905-332-8332 Fax 905-332-9994

Client Centre City Capital Limited
Address 31 Lakeshore Road E.
Mississauga, ON

Dwg No. SO031506 - AMP
Designer JM
Sales Chris Lampman

Date February 19, 2021
Rev. 3 June 07, 2021
Rev. 2 March 01, 2021

☒ CONCEPTUAL
NOT FOR CONSTRUCTION

☐ SHOP READY
CONSTRUCTION CAPABLE

Scale: 3/8" = 1' Page: 1 of 6

ZIP SIGNS
This drawing is the property of Zip Signs Ltd.