

Lakeview Park Public School S.S. No. 7

Presentation to Peel District School Board
March 2020

*Presentation compiled by Deborah Goss
Input & review by Krys Stechly
With special thanks to Richard Collins for providing
the attached Historical Assessment*

“Show me your school-houses. They will tell me more about the people of your township than I can learn in any other way. They speak the truth... about the attitude of your municipality towards all that makes for genuine progress.”

Ontario Department of Education, 1909

A Rural School in an Urbanizing Community

- ▶ Two-floor, four room, red brick schoolhouse built in 1923
- ▶ Two-floor, two room extension to north & west added in 1954
- ▶ Addition to east of original in 1965
- ▶ Included in City inventory of heritage properties due to architectural merit
- ▶ Cupola on roof, emphasizes agricultural character of community when built. Georgian Revival style with elements of Edwardian period
- ▶ Brass plaque above portico is unique “S.S. #7” no other school built in Mississauga has this design element
- ▶ Longest operational school in Mississauga (93 years) - only S.S. school to function as both an elementary & secondary school



1239 Lakeshore Road East, Lakeview

- ▶ Views of property from north, east, south & west
- ▶ Property to north is flat, used for school recreational field
- ▶ Pine, Sugar maple & black maple trees form canopy at front of original 1923 main entrance
- ▶ Lot size 9748.97m² - depth 205m
- ▶ Second access road at rear of school



looking north



looking east



looking south



looking west

(all photos above: Bing Maps)

* Refer to Ontario Department of Education Plan Book from 1909 - set standards for rural schoolhouses in Province

Physical, Historical & Contextual Assessment of Property Provided

by Richard Collins

- ▶ Report provided (see attached)
Assessment of significance of Lakeview Park Public School
- ▶ Interest to PDSB being a rural school built to first cohesive design standards in province set out in 1909 (first example of 'best practices')
- ▶ Standards discouraged wood, hence using brick as a sense of permanence
- ▶ Only two examples of two one-room schoolhouses remain in Mississauga
- ▶ This is the only school remaining of this type in Mississauga
- ▶ Heritage building, today lying vacant



A PHYSICAL, HISTORICAL and CONTEXTUAL ASSESSMENT of

1239 LAKESHORE RD. E.

MISSISSAUGA, ONTARIO

Historical significance to community

- ▶ When **Hurricane Hazel** hit the area in Oct 1954, Lakeview Park School was used to shelter residents who were flooded. They remained at the school until the storm subsided & accommodations found
- ▶ The school was used for **after school programming** for children for the women working in the Small Arms Munition Factory
- ▶ **Indigenous community (Cree women)** working at the Small Arms placed their children in the school education system
- ▶ **The First Lakeview Girl Guides** formed in Lakeview in 1927 met at the school, followed by First Lakeview Brownie Pack in 1931
- ▶ **Returning soldiers** housed across street at the military camp - included military families
- ▶ Lakeview Park School was the **heart of the community** for family activities, sports, skating & local events



▲ 1st Lakeview Girl Guides, 1949 (Mildred Potter Anderson)



Peel County Hockey Champions 1946-47, Lakeview Park School. Front row: Stan Doboz, Ken Flowers, Albert Lowe, Harvey Thomas, Jim Robinson. Second row: Raymond Lowe, Joe Flucko, Roy Luyben, Martin Hickey. Back row: Bill Campbell, Ted Burrows, Principal. Absent: Graham Joyce, Vic DiMarco, Don and Bob Smith. [Photo: Ted Burrows]



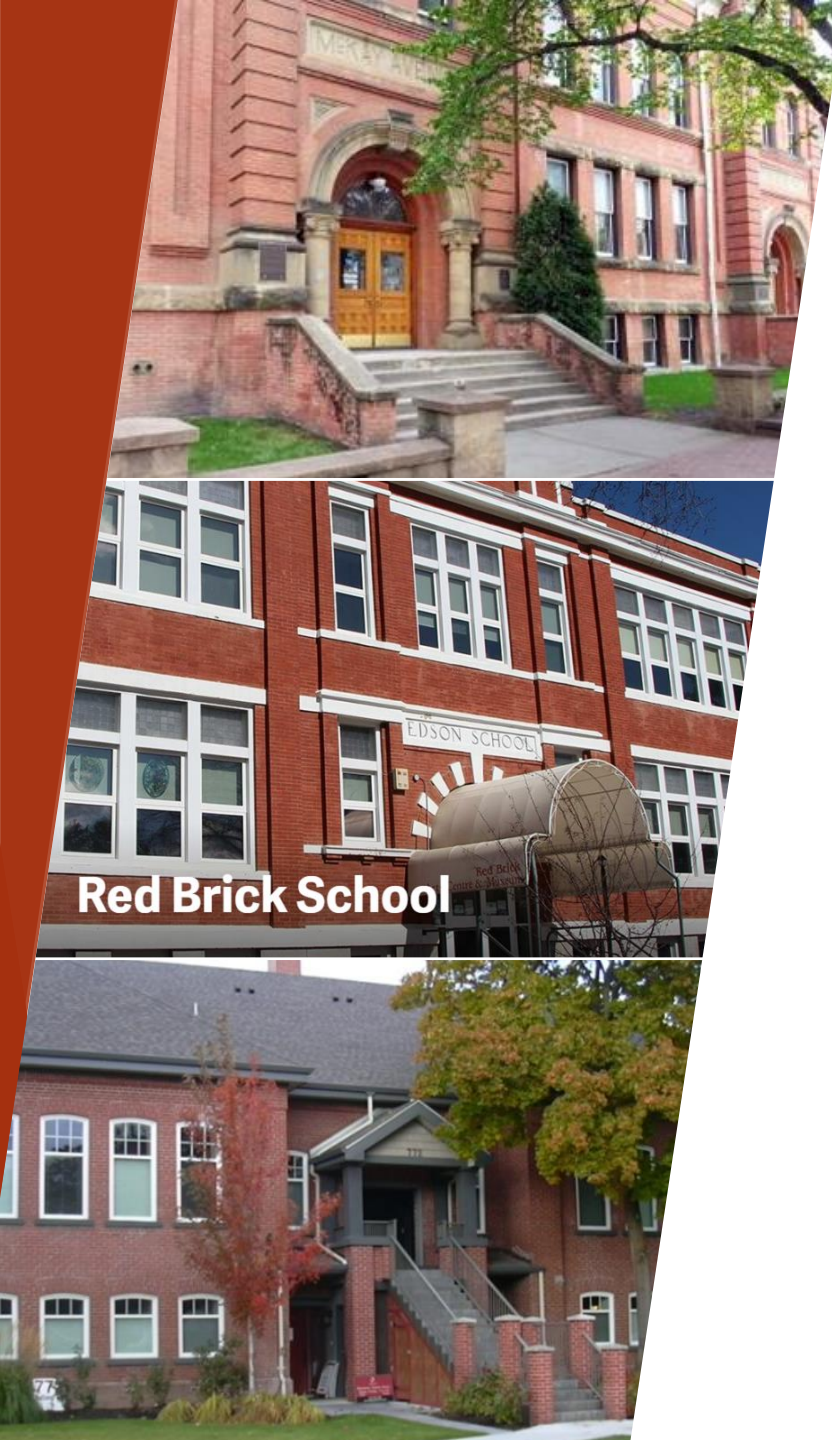
Lakeview Park School. School Parade along Lakeshore Road, September, 1947. [Photo: Mr. and Mrs. Ted Burrows]

Community use for future generations

What this heritage school can provide:

- ▶ Historic journey of the community; Lakeview history (journey from indigenous roots to rural - military - utility and now new community & urbanization)
- ▶ Maintaining a link to our heritage, providing a sense of belonging for the 30,000+ new residents coming to Lakeview
- ▶ Lakeview time capsule
- ▶ Historic building for community use; community space, museum, arts, gallery, seniors gathering space
- ▶ Providing continuity for community - integrating old residents with new, young with old, newcomers with Lakeview residents/indigenous community

**Success in other communities
with similar facilities**



Red Brick School

Heritage building requires renovation

How will we achieve this?

- ▶ PDSB - releasing from inventory
- ▶ City of Mississauga - showing no interest
- ▶ Region of Peel - showing no interest
- ▶ Provincial Government
- ▶ **Partner with a developer - development of one-acre property at rear while maintaining the historic building**
- ▶ Seniors affordable housing development
- ▶ Lakeview Long term care facility / seniors housing
- ▶ Benefit to community, former students & local area

Community driven operation



1239 Lakeshore Road East - property lines
Plan H-23, Lots 11 to 14, and part of Lots 35 and 36 (Google Earth)

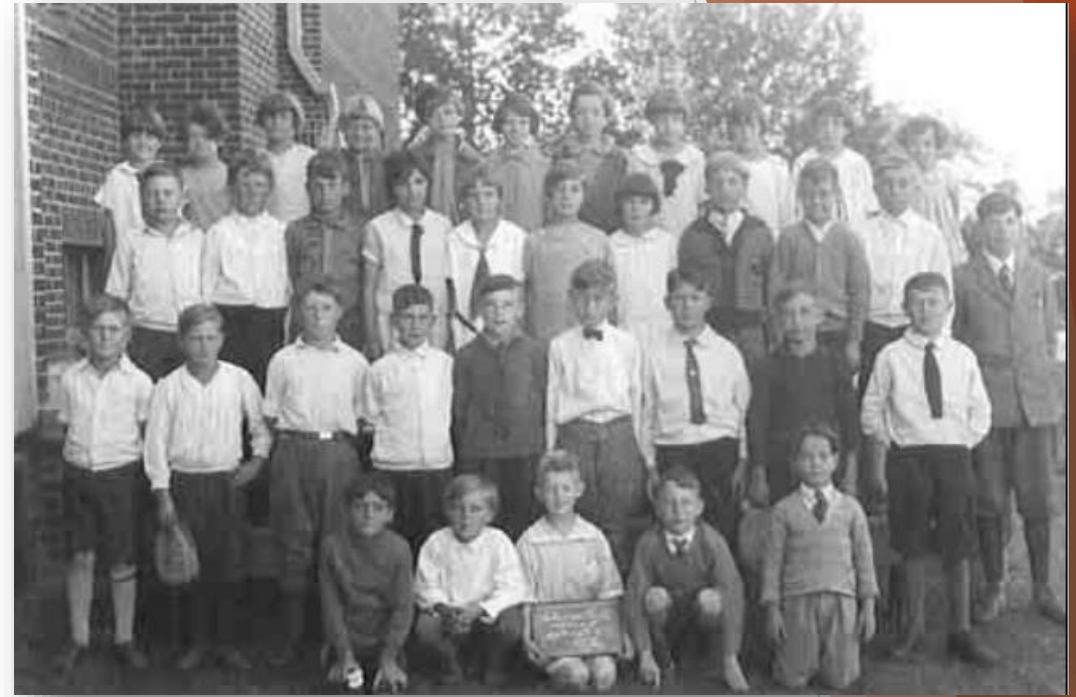
Community Spaces in Lakeview

- ▶ Current shortage of community accessible & affordable spaces for Lakeview residents
- ▶ Vital that the historic buildings are kept intact for the community
- ▶ Other Lakeview heritage buildings lost to private exclusive use (Cawthra-Elliott House, Adamson Estate)
- ▶ Emotional attachment to school by many members of Lakeview's community
- ▶ Numerous options this property could bring to Lakeview community

Unique opportunity: 100th Anniversary in 2023

- ▶ Celebration in 1973 - 50th anniversary
- ▶ Celebration in 1993 - 70th anniversary
- ▶ Celebration in 2023 - 100th anniversary
 - Many students remain living in area
 - Many teachers remain living in area
 - School admin staff (including a school standards staff member lives in the community)

**Opportunity to preserve this school
for the 100th anniversary & for the
next 100 years of Lakeview**



Lakeview Park Class, 1933

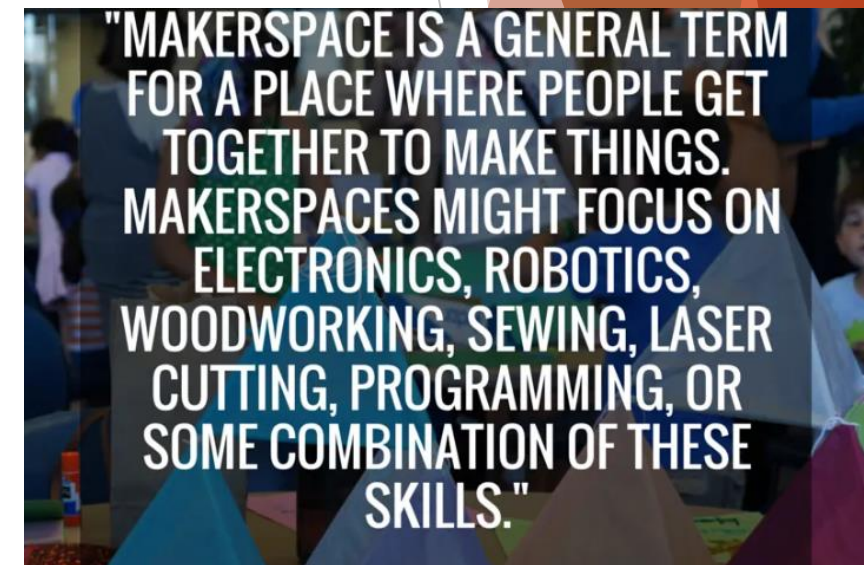


Unique opportunities for Community Space

- ▶ Gymnasium
 - ▶ provide needed space for community recreational space (noncompetitive sports)
 - ▶ Possible use for weddings - events
- ▶ Classrooms
 - ▶ Potential to find new use for old buildings
 - ▶ Pop up artist space
 - ▶ Community kitchen
 - ▶ Arts & crafts space
 - ▶ Maker spaces -e.g. woodworking, high tech to no tech tools - photography - theatre



6.3

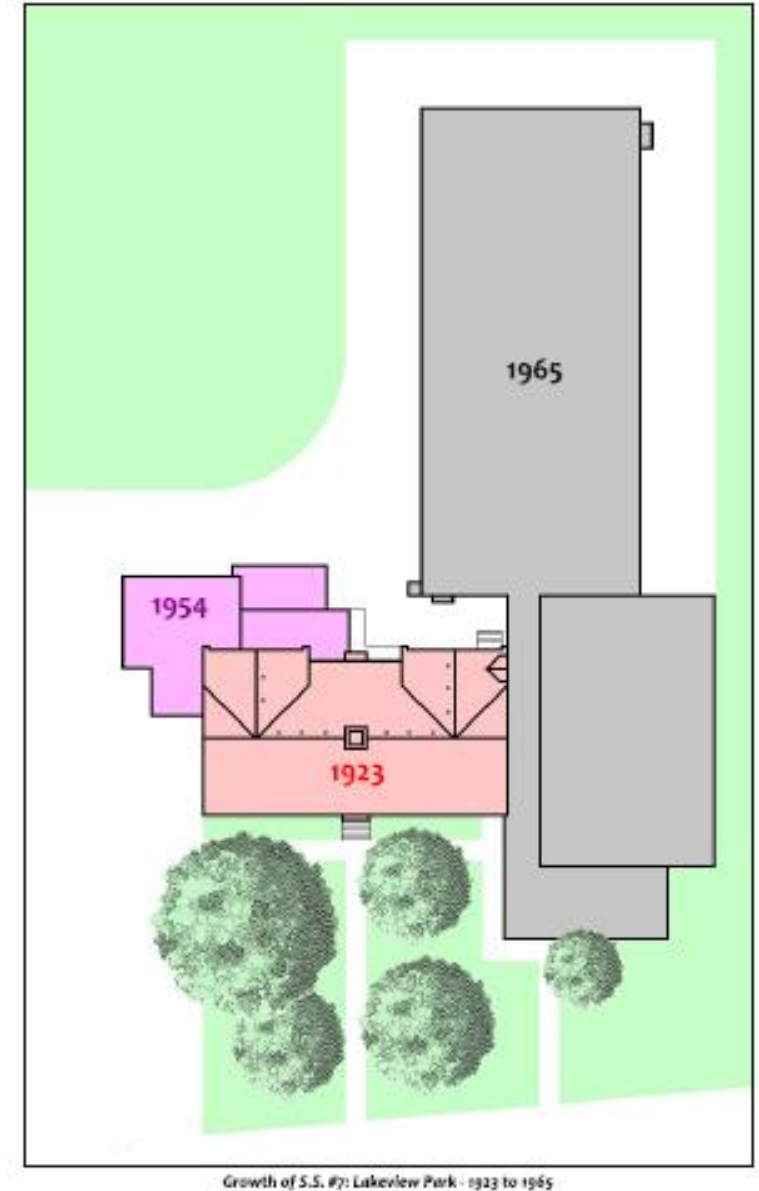


Success in other communities with similar facilities



Fulfills all criteria of Heritage Ontario Act 2006

- ✓ Heritage Act determines 1923 section of building is worthy of protection complying with 7 of the 9 subsections mentioned
- ✓ Design - physical value - historic & associative value & contextual value all met
- ✓ Regulation 9/06 of Section 29 of Ontario Heritage Act



Solution

- Development site - the right developer seeing potential for unique co-operation using acreage at rear of building as development
- Additional community hub for the existing & growing community in historic building
- Affordable seniors housing build on acreage
- Government funding potential
- Heritage /affordable seniors/long term care facility/indigenous - funding available
- High percentage of seniors in Lakeview exists - allow seniors to age in community
- How many other communities are preparing for aging in place?



ARCHITECTURAL
CONSERVANCY
ONTARIO



Our unique opportunity in Lakeview

- ▶ Approaching the 100th anniversary of Lakeview Park School
- ▶ Bring this unique building back to the heart of the community
- ▶ Allow future generations a community hub & facility while remembering the history of previous generations



The old S.S. #7 schoolhouse tells us more about the people of old Mississauga than can be learned in any other way