



EST. 1995

WILDWOOD
TREE SERVICES LTD

— 905-337-TREE —

2346 Mississauga Road
Mississauga, Ontario
Arborist Report - Tree Protection

Report to:	Aaron Schmidt City of Mississauga	Submitted by:	Wildwood Tree Services Michael Boulanger ISA Certified Arborist ON0893-AT 416-791-1840
RE:	Building Plan Application	Report Author:	Jennifer Kreller info@wildwoodtree.ca 905-337-8733
Requested by:	Jonathan Netta jonathannetta@rojasempire.com		
Date:	April 27, 2022		
# of Pages:	13		

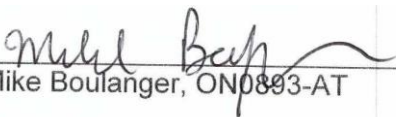

Mike Boulanger, ON0893-AT

TABLE OF CONTENTS

Site & Report Background	Page 3
Observations & Recommendations	Page 3
Tree Inventory	Page 4-6
Tree Inventory Methodology	Page 7
Site Plan & Tree Protection Measures	Page 8
Site Photos	Page 9-11
City of Mississauga Tree Protection Guidelines	Page 12
List of Trees to Consider Planting (post construction)	Page 13

Site & Report Background:

To obtain a permit to construct a 2 storey dwelling located at 2346 Mississauga Road in Mississauga.

I have visited the above site and collected all relevant data pertaining to the tree protection on site and any relevant trees within 6 meters of the property line. Data was collected on April 22 of 2022 by Mike Boulanger ISA Certified Arborist.

Observations & Recommendations:

There are 27 trees identified on this report; all municipal trees within 6 meters of the property line and any tree over 15cm in diameter at breast height located on private property.

The proposed construction access will encroach on the tree protection zone of trees 11 and 12. Horizontal tree protection (HTPZ) is recommended to be utilized throughout machine use.

Trees 6 and 7 are recommended for removal. Tree 6 is impacted by the proposed garage and tree 7 is in poor condition and is impacted by the proposed retaining wall and garage. A tree removal permit is required and neighbours written permission is required for tree 7.

The proposed covered porch will encroach on the tree protection zone of boundary tree 12. It is recommended that sonotubes are utilized and the holes for the sonotubes are exposed using high pressure air or water (air spading or hydro vac technology) so the roots can be pruned by a Certified Arborist prior to excavation.

This report has been written in accordance the City of Mississauga Tree Protection during Construction Procedures. Additional information can be found at

<https://www.mississauga.ca/wp-content/uploads/2020/07/16113507/Mississauga-Tree-Preservation-Protection-Standards.pdf>

Inspection of the trees on site was limited to a visual assessment from the ground only, unless stated otherwise. No inspection via climbing, exploration below grade, probing, or coring were conducted. Any observations and data collected from site are based on conditions at the time of inspection. Diameters of trees located on neighbouring properties were estimated to avoid trespassing.

Tree Inventory

Tree No.	Species	DBH (cm)	Crown Reserve (m)	Health	Structural Condition	Preservation Rating	TPZ (m)	Ownership	Observations/ Comments/ Recommendations
1	White oak, <i>Quercus alba</i>	69	17.3	F	F	H PRESERVE	4.2	Municipal	CD. Large DW,
2	Silver Maple, <i>Acer saccharinum</i>	77	21	G	G	H PRESERVE	4.8	Municipal	DW. PP.
3	Silver Maple, <i>Acer saccharinum</i>	90	22.5	F	F	H PRESERVE	5.4	Private	Large stem previously broken. TD. DW. PP.
4	White Mulberry, <i>Morus alba</i>	19	7	G	F	H PRESERVE	2.4	Private	
5	White Mulberry, <i>Morus alba</i>	15	5	P	P	L PRESERVE	2.4	Boundary	Growing into fence and wall.
6	White Spruce, <i>Picea glauca</i>	41	8	G	G	L REMOVE	N/R	Private	DW. PP. PD; requires removal. Permit required. 3 trees compensation.
7	Black Cherry, <i>Prunus serotina</i>	85	16	P	P	L REMOVE	N/R	Boundary	CD. Large DW. Recommended for removal due to poor health and construction. Permit and neighbours written permission required.
8	Norway Maple, <i>Acer platanoides</i>	20*	7	G	G	H PRESERVE	1.5 PWF	Neighbour	

*DBH Estimated due to access restraints

PWF = Protected with fencing

Requires attention

Mike Boulanger
ISA Certified Arborist ON-0893AT
Wildwood Tree Services Ltd.

Tree Inventory

Tree No.	Species	DBH (cm)	Crown Reserve (m)	Health	Structural Condition	Preservation Rating	TPZ (m)	Ownership	Observations/ Comments/ Recommendations
9	Norway Maple, <i>Acer platanoides</i>	18*	4	G	G	H PRESERVE	1.5 PWF	Neighbour	
10	Norway Maple, <i>Acer platanoides</i>	21*	6	G	G	H PRESERVE	1.8 PWF	Neighbour	
11	Sugar Maple, <i>Acer saccharum</i>	45	14.5	G	G	H PRESERVE	3.0 PWF	Neighbour	0.3m from property line. HTPZ is recommended.
12	Red Oak, <i>Quercus rubra</i>	122	24	F	F	M PRESERVE	9.6	Boundary	CD. Large DW. PP. Trenchless excavation & root pruning for sonotube installation. HTPZ is recommended.
13	Norway Maple, <i>Acer platanoides</i>	21*	6	G	G	H PRESERVE	1.8 PWF	Neighbour	
14	Black Cherry, <i>Prunus serotina</i>	60*	22	F	P	L PRESERVE	3.6 PWF	Neighbour	LN. CD. Large DW. PP.
15	White Spruce, <i>Picea glauca</i>	20*	6	F	P	L PRESERVE	1.5 PWF	Neighbour	
16	Red Oak, <i>Quercus rubra</i>	79	21	F	F	H PRESERVE	4.8	Private	CD. DW. PP.

*DBH Estimated due to access restraints

PWF = Protected with fencing

Requires attention

Mike Boulanger
 ISA Certified Arborist ON-0893AT
 Wildwood Tree Services Ltd.

Tree No.	Species	DBH (cm)	Crown Reserve (m)	Health	Structural Condition	Preservation Rating	TPZ (m)	Ownership	Observations/ Comments/ Recommendations
17	Red Oak, <i>Quercus rubra</i>	83	23	F	F	H PRESERVE	5.4	Private	LN.
18	White Spruce, <i>Picea glauca</i>	27	6.3	F	F	H PRESERVE	1.8 PWF	Neighbour	LN. LS. DW.
19	Red Oak, <i>Quercus rubra</i>	90	20.7	F	F	H PRESERVE	5.4	Private	Large DW. LS.
20	White Spruce, <i>Picea glauca</i>	21	6	F	F	H PRESERVE	1.8 PWF	Neighbour	LS. DW.
21	Eastern Hemlock, <i>Tsuga canadensis</i>	19	6.3	G	G	H PRESERVE	1.5	Private	
22	Black Cherry, <i>Prunus serotina</i>	22*	4	P	P	L PRESERVE	1.8 PWF	Neighbour	2m from property line.
23	Eastern Hemlock, <i>Tsuga canadensis</i>	25	8	G	G	H PRESERVE	1.8	Private	DW.
24	Eastern Hemlock, <i>Tsuga canadensis</i>	19	7.2	G	G	H PRESERVE	1.5	Private	DW.

Tree Inventory

*DBH Estimated due to access restraints

PWF = Protected with fencing

Requires attention

Mike Boulanger
 ISA Certified Arborist ON-0893AT
 Wildwood Tree Services Ltd.

2346 Mississauga Road, Mississauga 7

Tree No.	Species	DBH (cm)	Crown Reserve (m)	Health	Structural Condition	Preservation Rating	TPZ (m)	Ownership	Observations/ Comments/ Recommendations
25	White Mulberry, <i>morus alba</i>	29	8	G	F	H PRESERVE	1.8 PWF	Neighbour	4m from property line. IB.
26	White Pine, <i>Pinus strobus</i>	20*	6.4	G	G	H PRESERVE	1.5 PWF	Neighbour	0.2m from property line.
27	Paper Birch, <i>Betula papyrifera</i>	39 21/23/24	13.2	F	F	H PRESERVE	2.4	Neighbour	5m from property line. MS. DW. CD.

Tree Inventory

*DBH Estimated due to access restraints

PWF = Protected with fencing

Requires attention

TREE INVENTORY METHEDOLOGY

DBH (cm): Diameter at breast height, standard of 1.4m above ground.

Height (m): Height of tree from ground to top of crown.

Crown Reserve (m): Diameter of crown, the trees canopy width.

Health: General overall health of the tree. Rated as (E) excellent, (G) good, (F) fair, (P) poor, (D) dead.

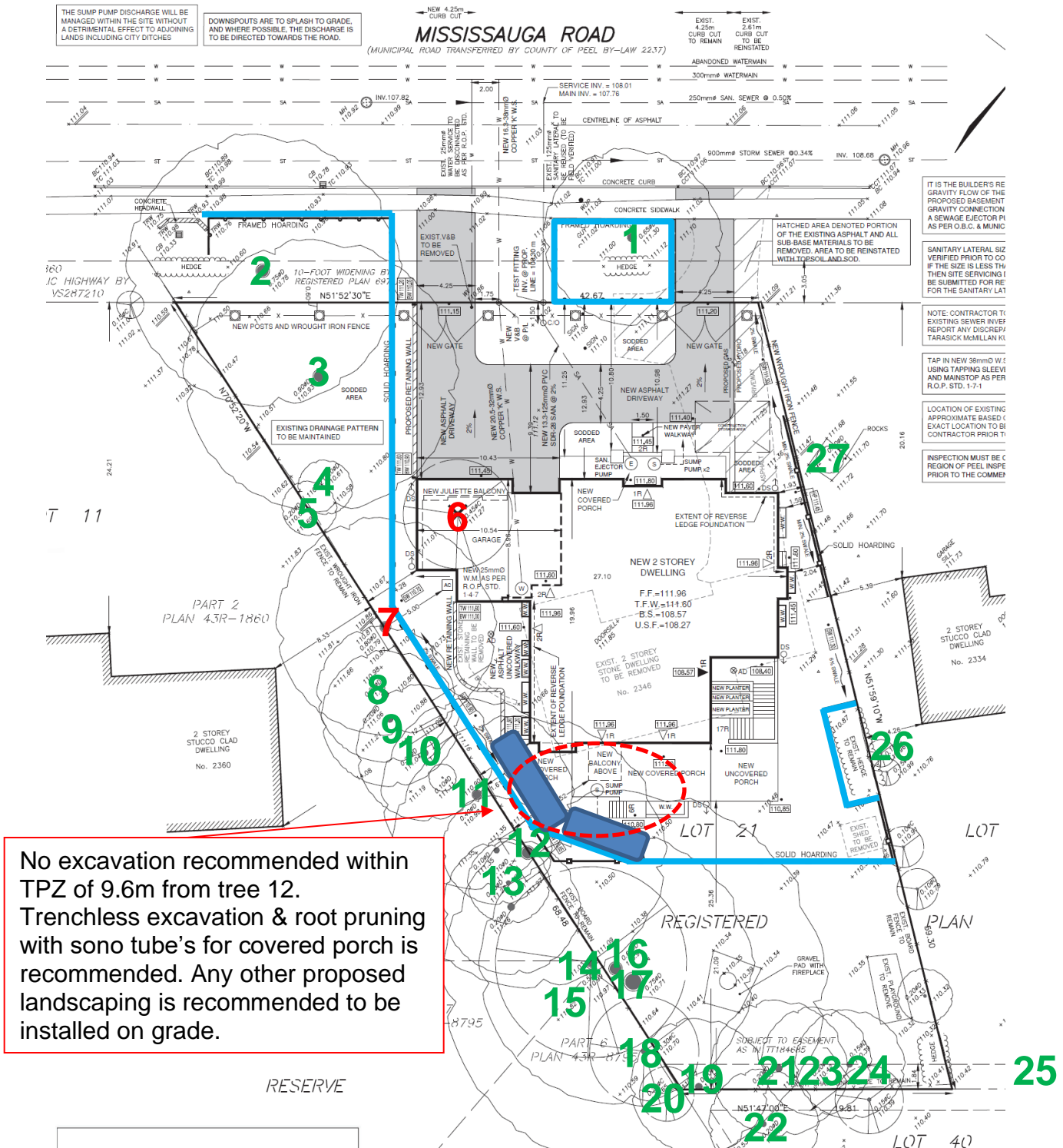
Structural Condition: Based on structural faults or defects Rated as (E) excellent, (G) good, (F) fair, (P) poor.

Preservation Rating: A trees projected survival based on the existing conditions. Rated as (H) high, (M) moderate, (L) low.

Observations, Comments, and Recommendations:

BC= broken crown	LN= leaning
BN= bark necrosis (dead/dying bark)	LS= light suppressed
BR= branch	MS= multiple stems
BS= bark split	PC= pollarded crown
BT= bent trunk	PL= poor leader development
CD= crown die back	PP= passed pruning
CN= crown	PTH= planted high
DC= tree in decline	PD= proposed development near Tree
DD= dead	PS= prune away from structure
DF= defoliated	PT= preserve tree
DS= diseased	PTL= planted low
DW= deadwood	RB= remove basket
EC= elevate canopy	RC= requires cabling
ER= exposed roots	RM= remove plant
EX= existing cable	RP= requires pruning
FC= frost cracks	RS= remove stakes or wire
FS= plant in footprint of proposed Structure	TD= trunk decay
GC= impact from grade changes	TP= transplanting potential
GR= girdling roots	TRS= transplant stress
HT= hazardous tree	TS= trunk split
IB= included bark	UT= understory tree

Site Plan & Tree Protection Measures:



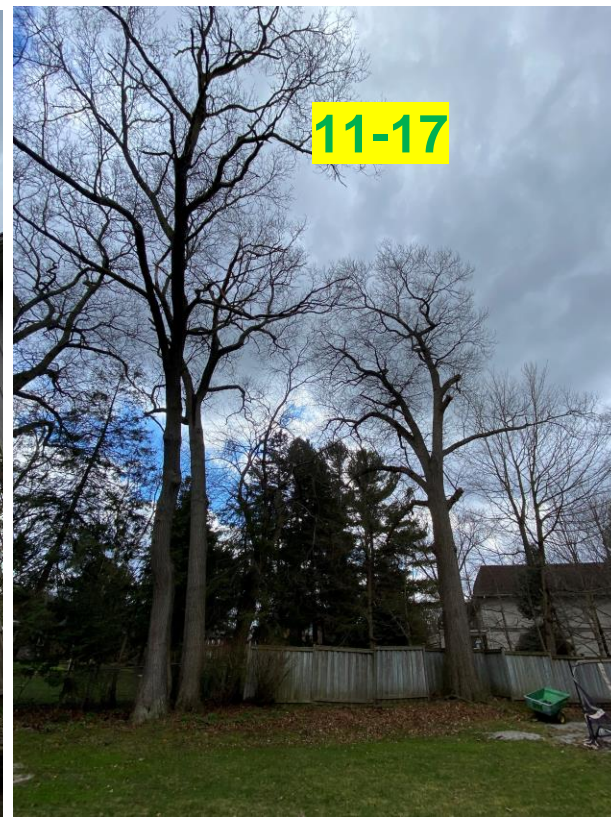
No excavation recommended within TPZ of 9.6m from tree 12. Trenchless excavation & root pruning with sono tube's for covered porch is recommended. Any other proposed landscaping is recommended to be installed on grade.

 Solid Hoarding is indicated in Blue
 Trenchless excavation & Root Pruning
RED= TREE FOR REMOVAL GREEN= TREE FOR PRESERVATION

 = Construction/Machine Access

 = HTPZ/ Root Protection

Mike Boulanger
ISA Certified Arborist ON-0893AT
Wildwood Tree Services Ltd.

Site Photo's

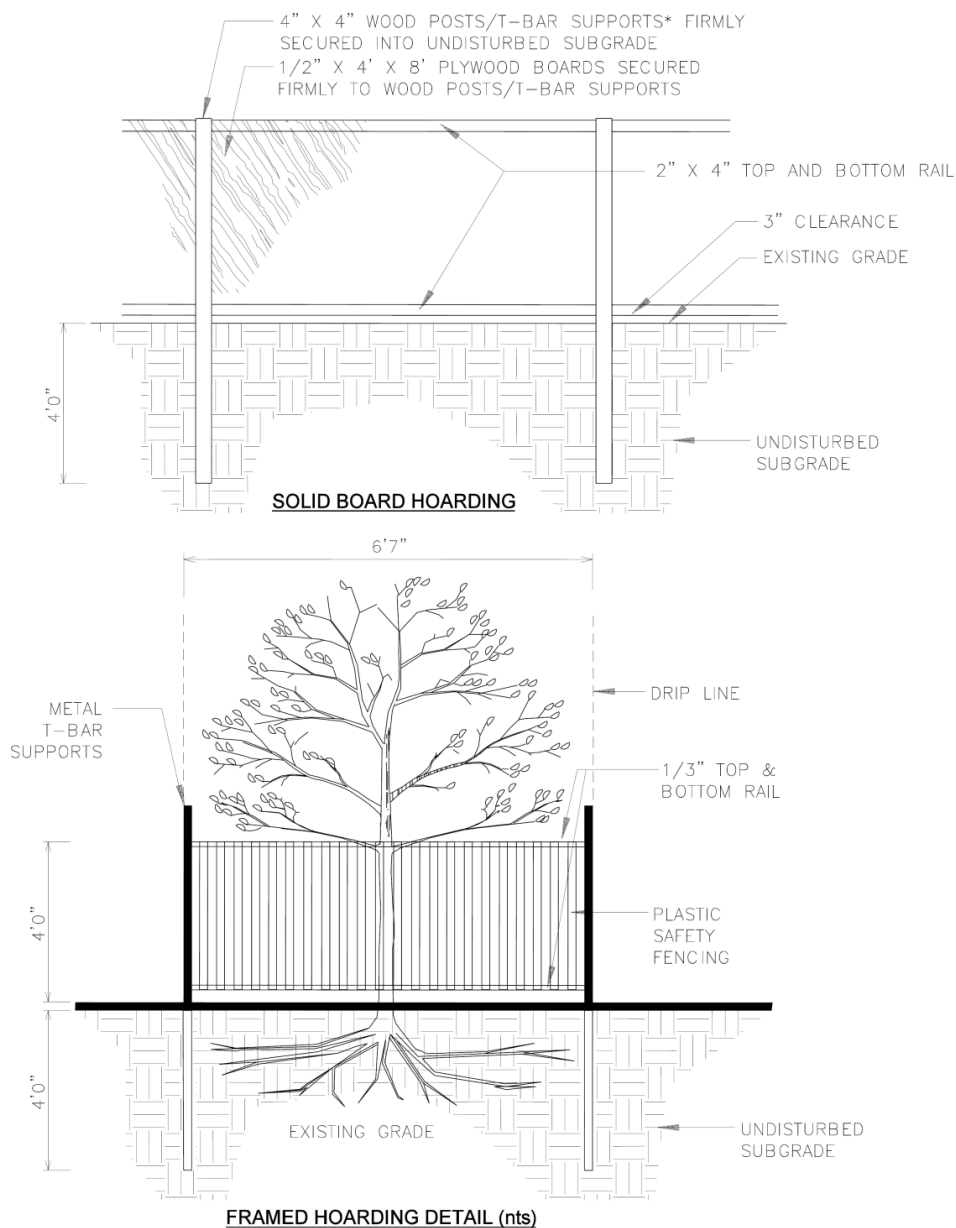
Mike Boulanger
ISA Certified Arborist ON-0893AT
Wildwood Tree Services Ltd.

14-24

25

26

27

**NOTES:**

1. HOARDING DETAILS TO BE DETERMINED FOLLOWING INITIAL SITE INSPECTION.
 2. HOARDING TO BE APPROVED BY DEVELOPMENT AND DESIGN.
 3. HOARDING MUST BE SUPPLIED, INSTALLED AND MAINTAINED BY THE APPLICANT THROUGHOUT ALL PHASES OF CONSTRUCTION, UNTIL APPROVAL TO REMOVE HOARDING IS OBTAINED FROM DEVELOPMENT AND DESIGN.
 4. DO NOT ALLOW WATER TO COLLECT AND POND BEHIND OR WITHIN HOARDING.
- * T-BAR SUPPORTS FOR SOLID HOARDING WILL ONLY BE ALLOWED WITH PRE APPROVAL FROM DEVELOPMENT AND DESIGN.



SCALE: N.T.S.
DATE: JAN, 2008

DEVELOPMENT & DESIGN CONSTRUCTION HOARDING

I:\planning\mapping\Special Projects\ 2008 \ConstructionHoarding_JH\ D&D_ConstructHid.dgn

Mike Boulanger
ISA Certified Arborist ON-0893AT
Wildwood Tree Services Ltd.

Wildwood Tree Services Ltd. Favored Tree Species for Urban Settings.

Large Shade Trees.

- Sugar Maple, *Acer saccharum*
- Red Oak, *Quercus rubra*
- American Beech, *Fagus grandifolia*
- European Beech, *Fagus sylvatica*
- Tulip Tree, *Liriodendron tulipifera*
- Kentucky Coffeetree, *Gymnocladus dioica*

Evergreens (Coniferous)

- Silver Fir, *Abies concolor*
- Canadian Hemlock, *Tsuga canadensis*
- Eastern White Pine, *Pinus strobus*
- Colorado Blue Spruce, *Picea pungens*
- Hicks Yew, *Taxus media hicksii*
- Black Cedar, *Thuja Occidentalis Nigra*

Small and Ornamental Trees.

- Hackberry, *Celtis occidentalis*
- River Birch, *Betula nigra*
- Chanticleer Pear, *Pyrus calleryana chanticleer*
- Bradford Pear, *Pyrus calleryana bradford*
- Paperbark Maple, *Acer griseum*
- Bloodgood Japanese Maple, *Acer palmatum bloodgood*
- Siberian Crab Tree, *Malus baccata*
- Pyramidal English Oak, *Quercus robur fastigiata*
- Dawyck Purple Beech, *Fagus Sylvatica dawyck purple*
- Tricoloured Beech, *Fagus sylvatica 'Tricolor'*
- Florida Dogwood, *Cornus florida Std.*

It is best to consult an arborist to ensure you are selecting a species that is suitable for its location. A well maintained and carefully selected tree will ensure a tree that is both beautiful and sustainable.

**"The true meaning of life is to plant trees,
under whose shade you do not expect to sit."
~Nelson Henderson**