



**Credit Valley  
Conservation**  
inspired by nature

# **Jim Tovey Lakeview Conservation Area**

By: Bryana McLaughlin  
Senior Coordinator, Capital Projects



# Jim Tovey Lakeview Conservation Area



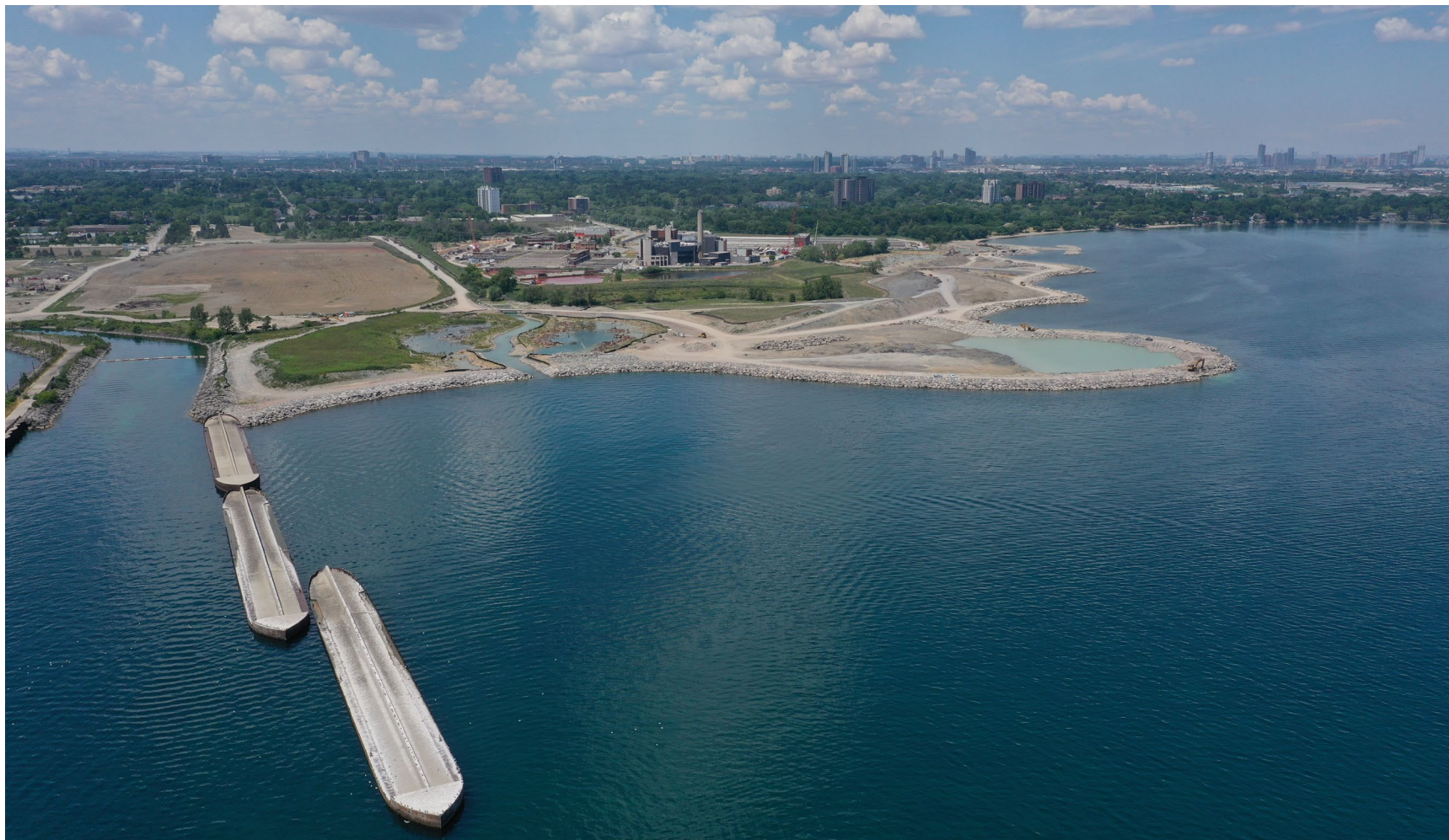


# Jim Tovey Lakeview Conservation Area





# Jim Tovey Lakeview Conservation Area





## Vision for the Conservation Area

- Passive day-use conservation area
- 1.5 km of new Waterfront Trail
- 1.2 km of Secondary Trail and boardwalk





# Construction Progress

Fall 2016 we were here





# Construction Progress

Now we are here





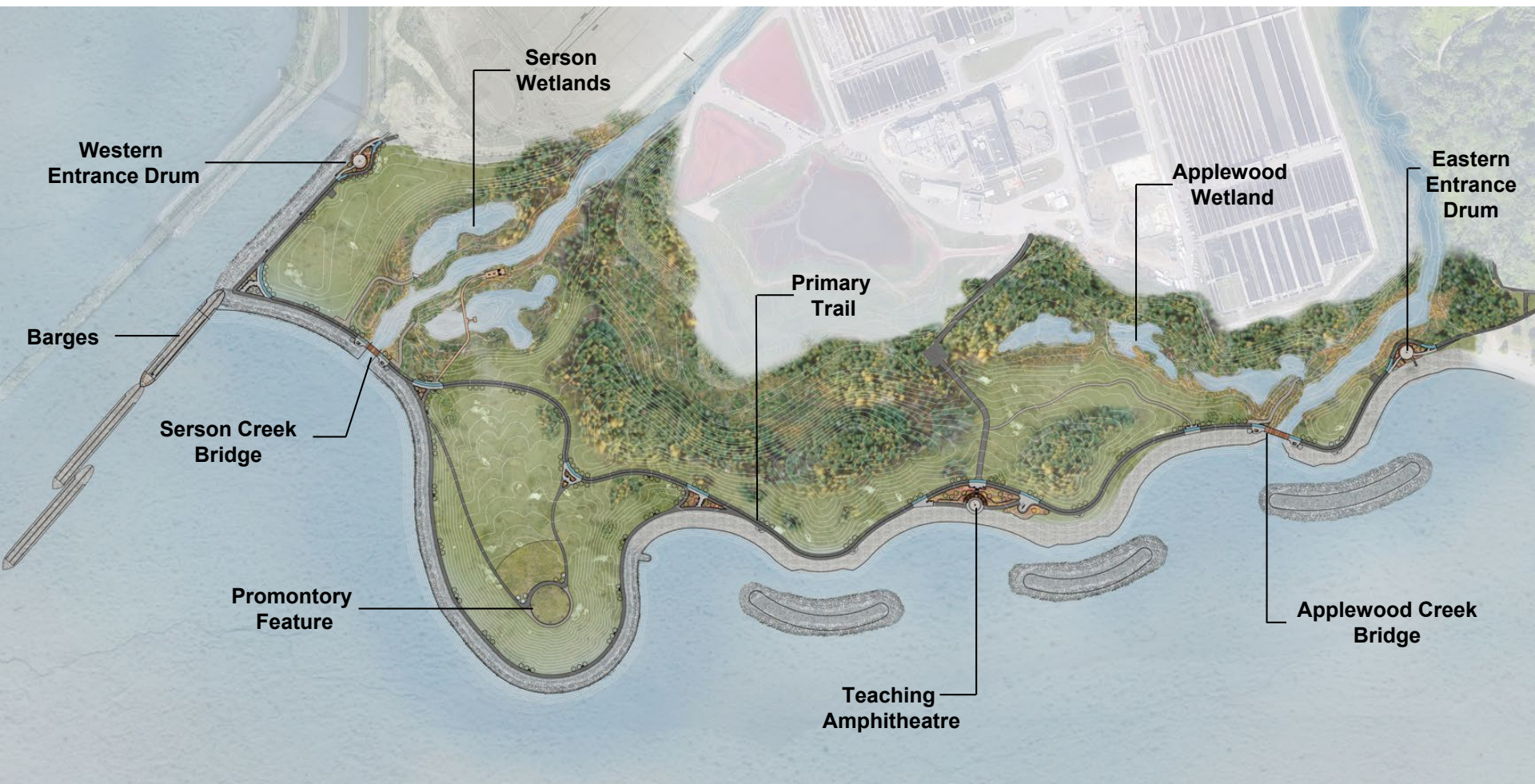
# Construction Progress

Now we are here





# Updated Public Realm Design



# Updated Public Realm Design

## Accessibility Overview

- All trails to be firm stable surface (asphalt, limestone screenings)
- Primary Trail is 5.5m width, secondary trail 3.5m width, tertiary trail 2.5m width
- All trail grades are less than 10% (most under 5%)
- Dispersed Shaded Rest Areas (Caliper Trees) most ~90m-100m apart.
- All look out and scenic vistas are accessible
- No beach access... cobble beach misnomer
- Regulatory and Interpretive Signage Plan to be developed with Accessible guidelines



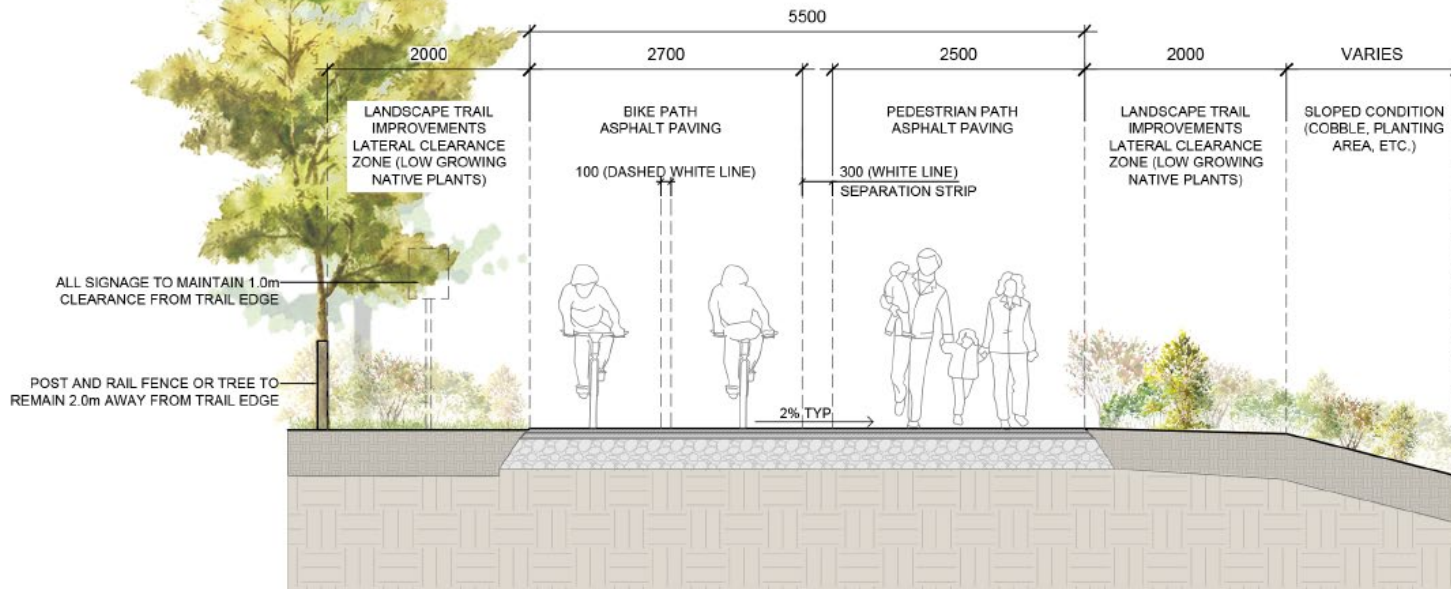
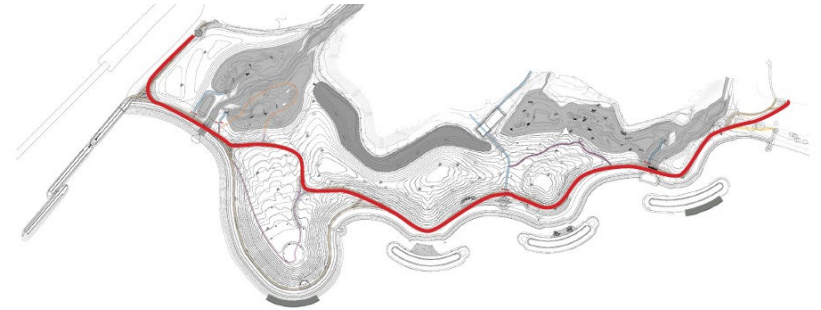
## Recreational Trails and Footbridges

### City of Mississauga Accessibility Design Guidelines

- Entrances to recreational trails to have a clear opening between 850 -1000 mm
- Trail width shall be at least 1000 mm (39-3/8 in.)
- Where significant changes in grade occur, recreational trail routes shall ideally be sloped at no greater than 1:20, or have adjacent steps and ramps. Where this is not possible due to site constraints, a 1:10 slope is acceptable.
- Trail surfaces shall be firm and stable.
- Where steps, footbridges or ramps are used, the surfacing shall be of non-slip materials and include suitable colour-contrasting handrails and/or guards.

# Recreational Trails and Footbridges

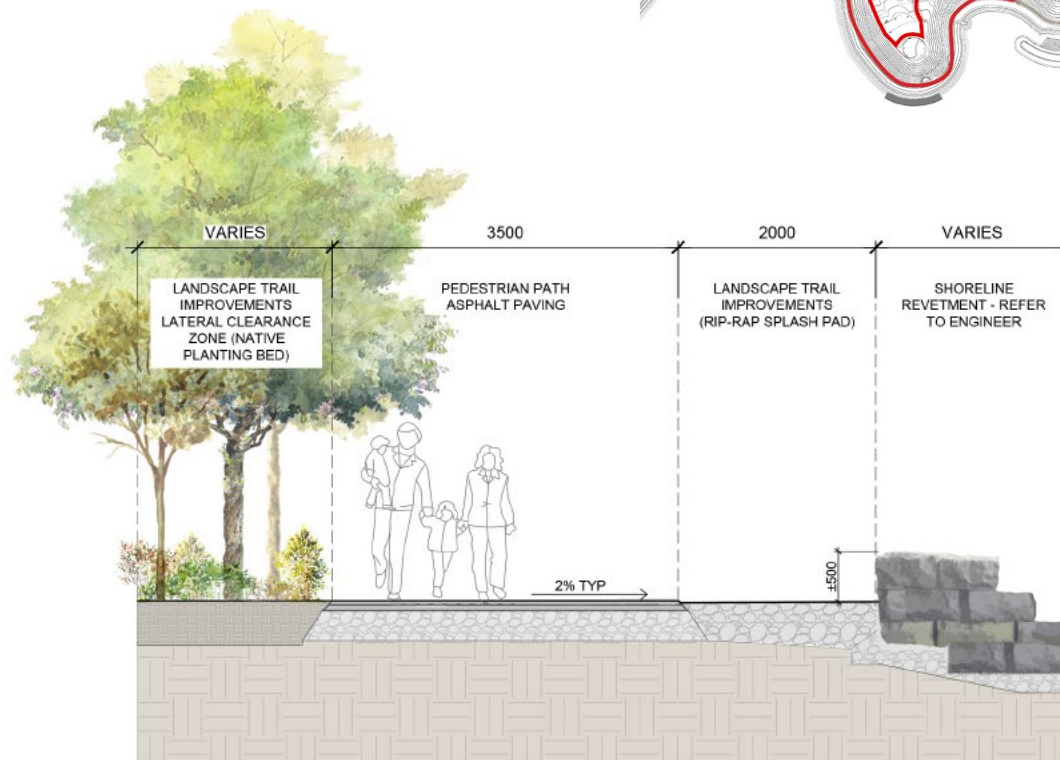
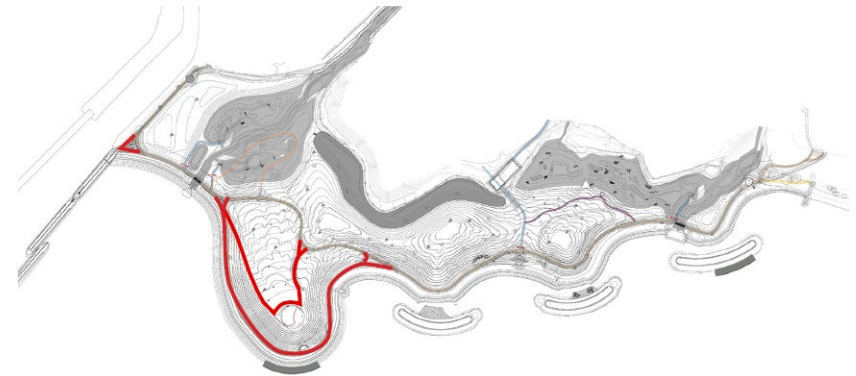
## Primary Trail- 5.5 m





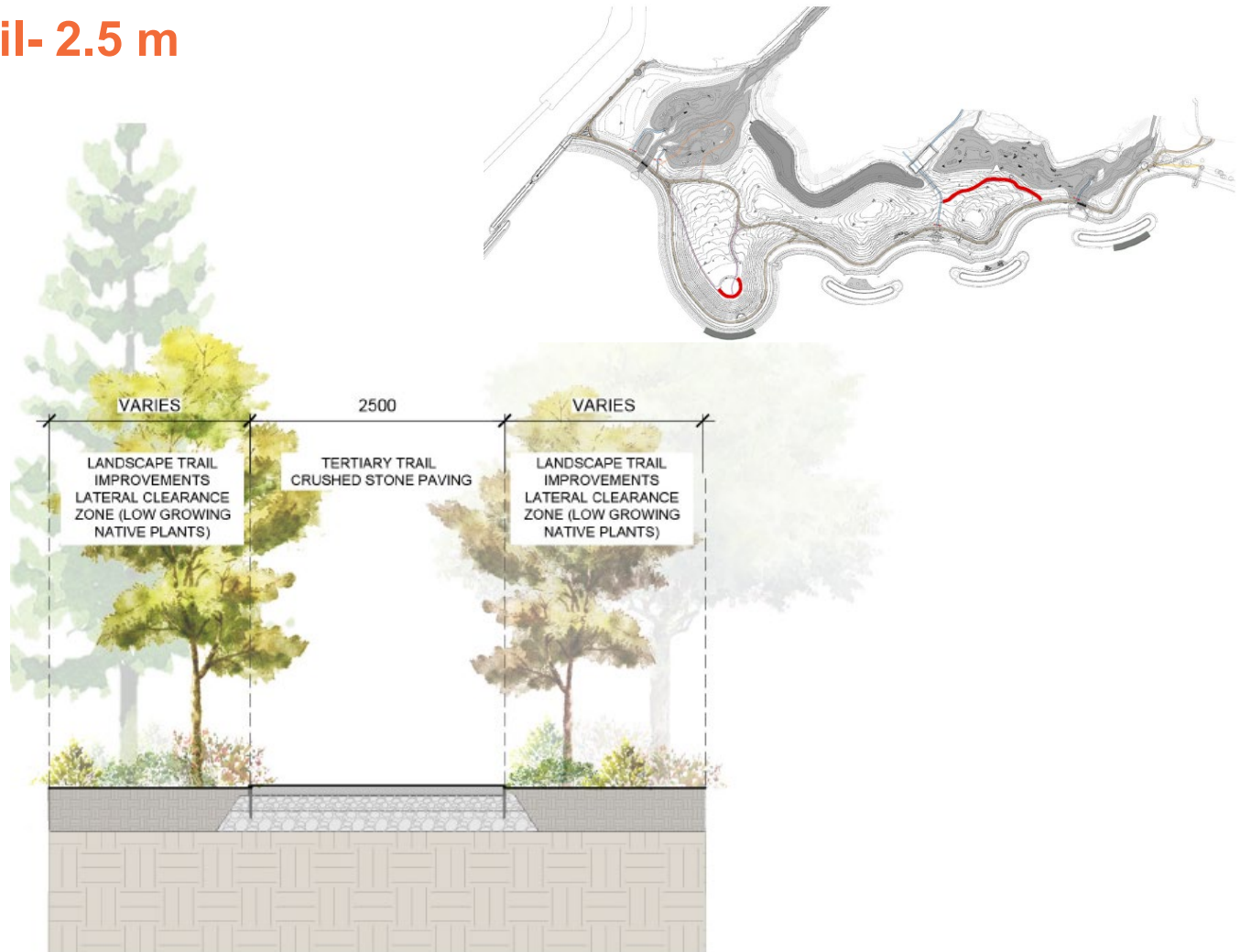
# Recreational Trails and Footbridges

## Secondary Trail- 3.5 m



# Recreational Trails and Footbridges

## Tertiary Trail- 2.5 m





## General Park Guidelines and Rest Areas

### City of Mississauga Accessibility Design Guidelines

- Entrance gates, paths and walkways throughout the park shall be accessible to a person using a wheelchair or scooter.
- Rest areas shall:
  - be provided on recreational trails\*... every 30 to 90 m be positioned adjacent to the recreational trail, pathway or walkway
  - have accessible ground surfaces in compliance with 4.1.2
  - use a contrasting ground finish material to identify functional change

# General Park Guidelines and Rest Areas

## Access Points

- All access points and staging areas are designed to meet accessible radii, grade and surface standards for wheelchairs and scooters.

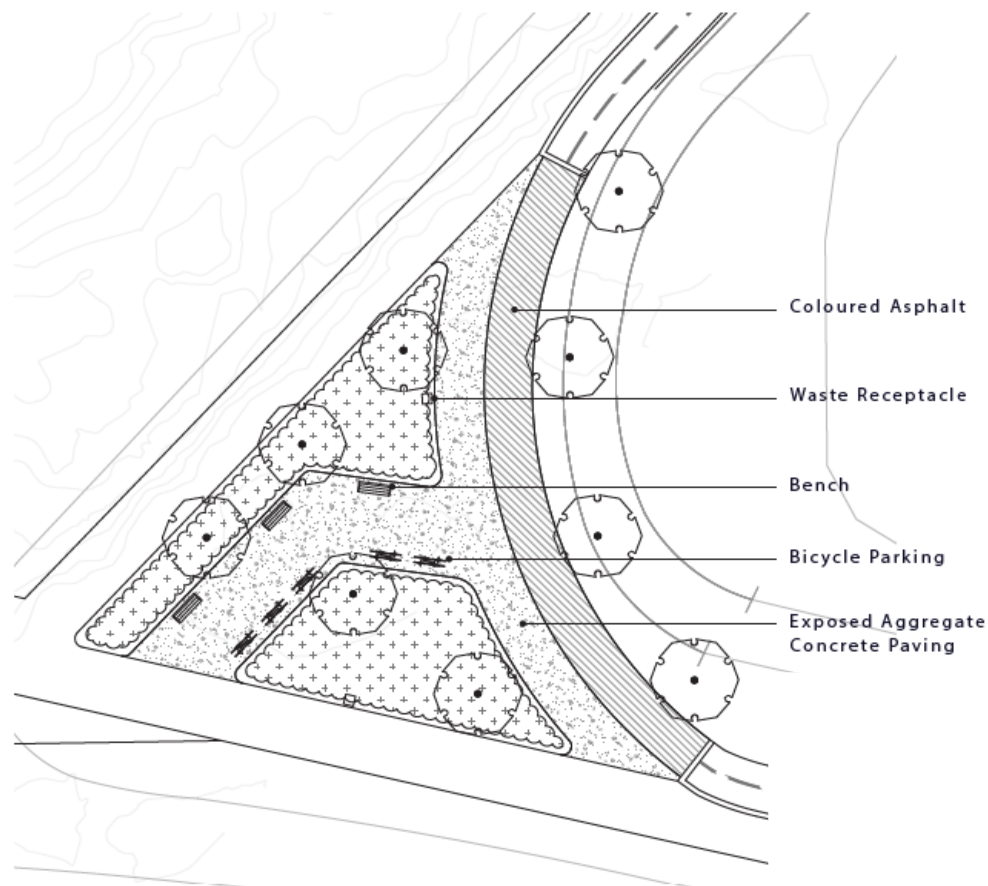




# General Park Guidelines and Rest Areas

## Rest Areas

- Rest and shade areas are provided every 90m where possible. Some are located at maximum 110m distance apart.
- Bike lanes have coloured asphalt at rest areas to signal slow down
- Rest areas surfaced with exposed aggregate concrete paving



## Scenic Outlooks

### City of Mississauga Accessibility Design Guidelines

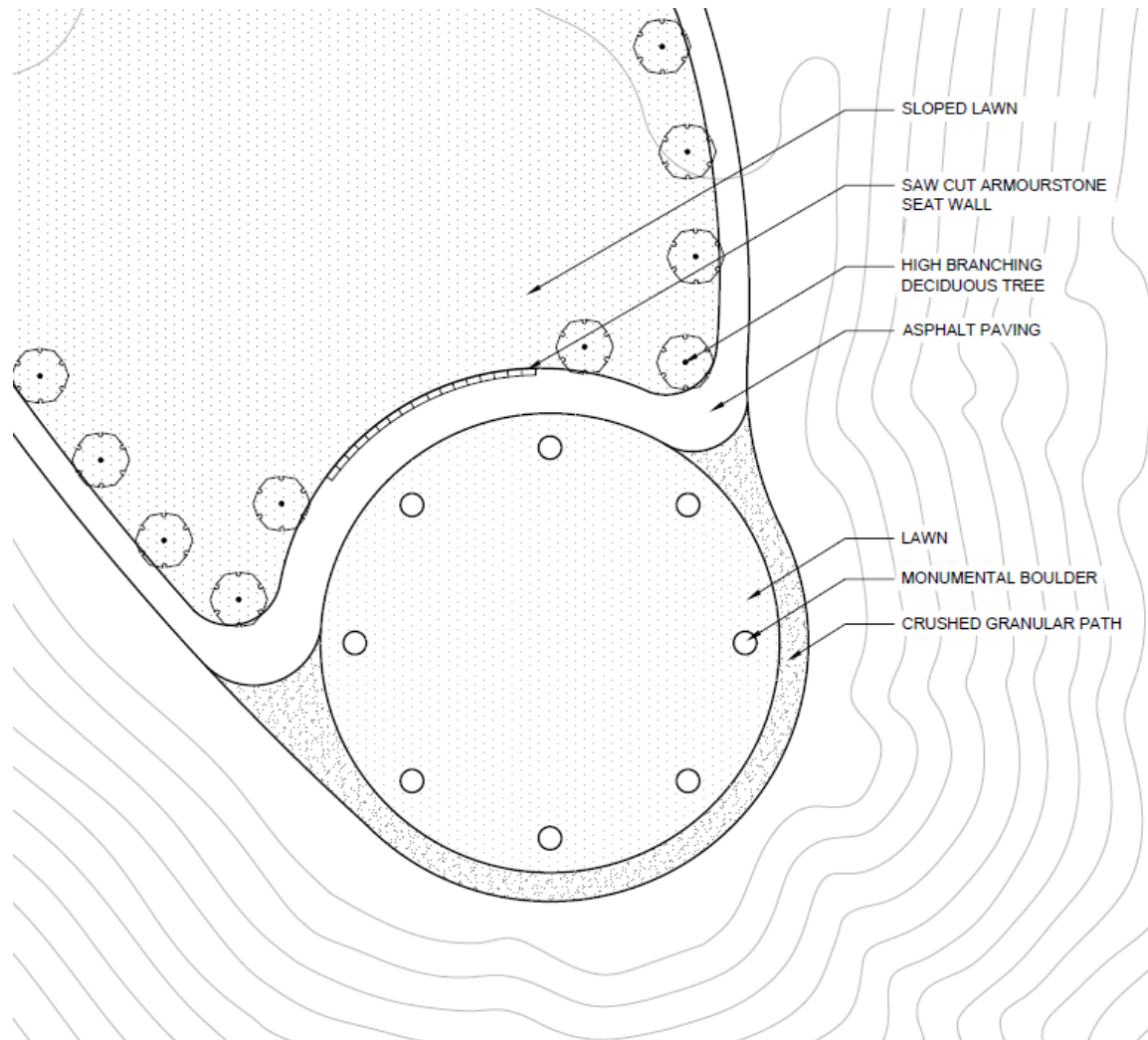
- Where scenic outlooks have been provided, they shall:
  - be located on an accessible route in compliance with 4.1
  - incorporate smooth and stable surfaces at transition points;
  - incorporate continuous edge protection, at least 100 mm (4in.) high and of a contrasting colour around the edge of the outlook area; and
  - if benches are provided, they shall comply with 4.3.15.



# Scenic Outlooks- Promontory



# Scenic Outlooks- Promontory

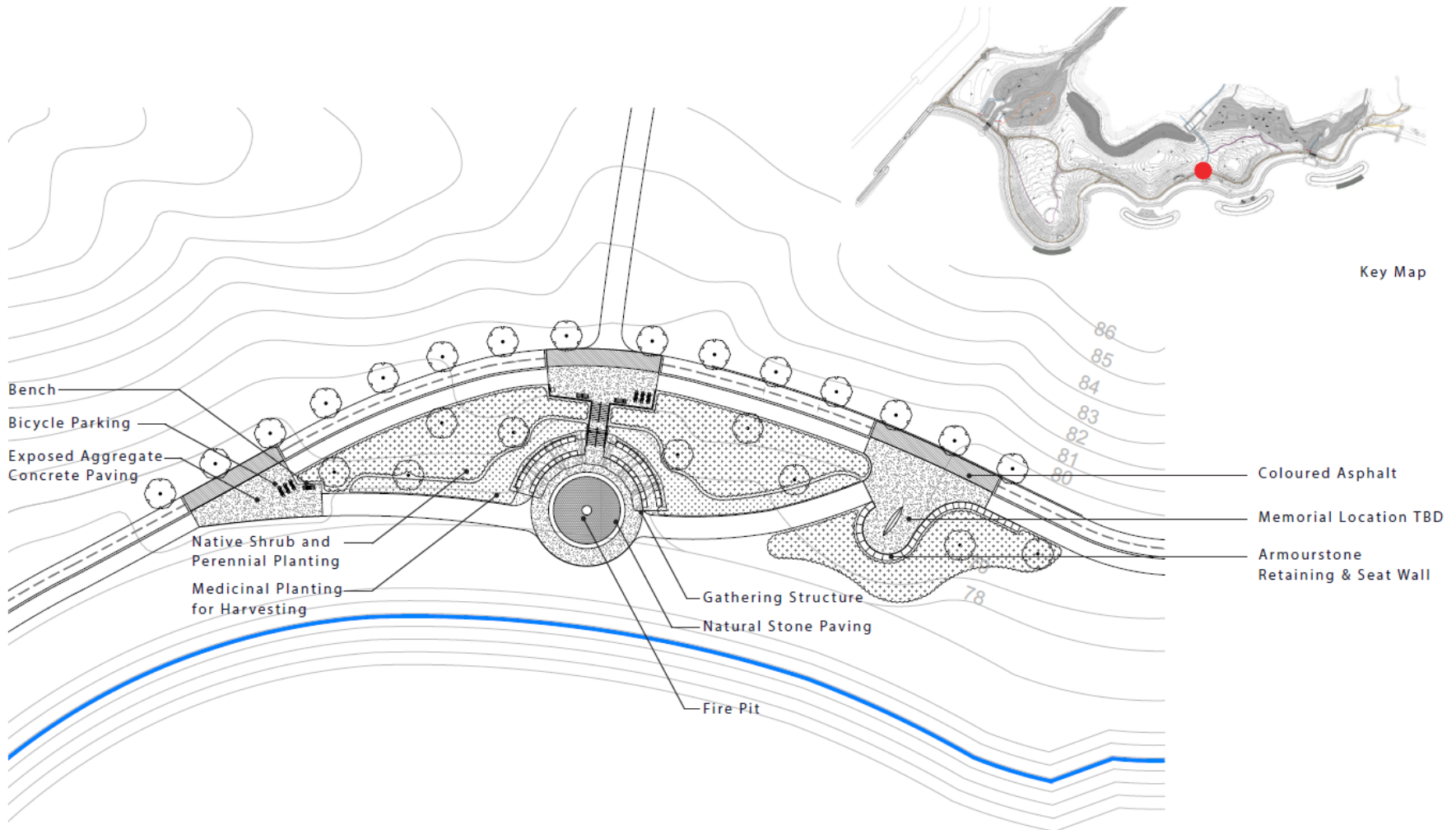




# Scenic Outlooks- Amphitheatre

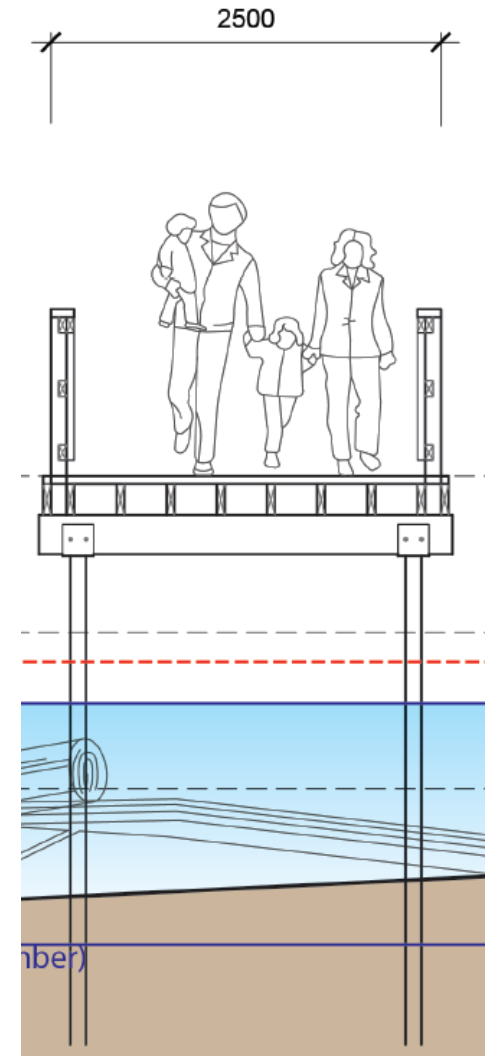
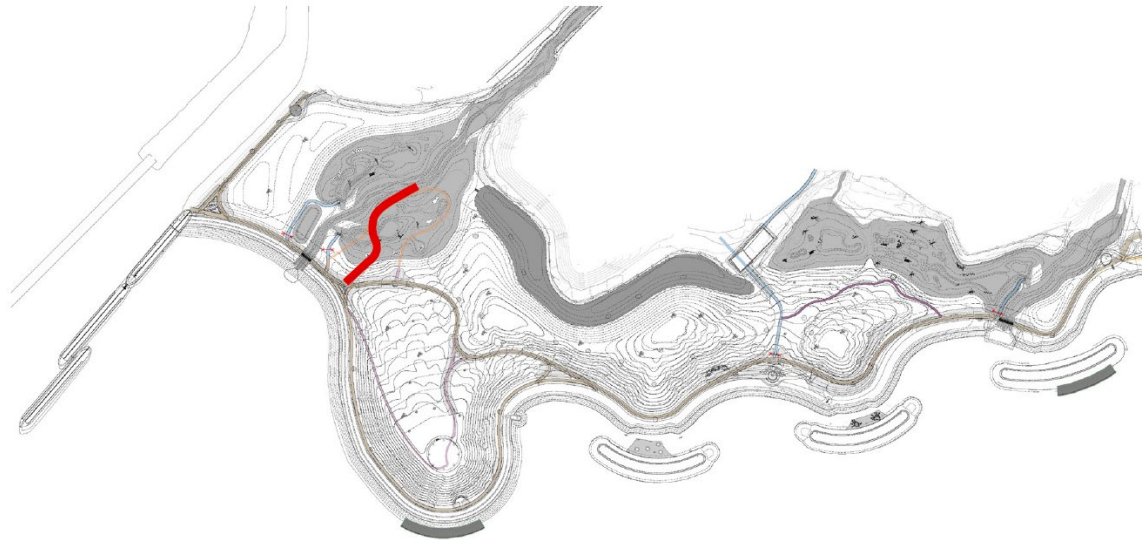


# Scenic Outlooks- Amphitheatre

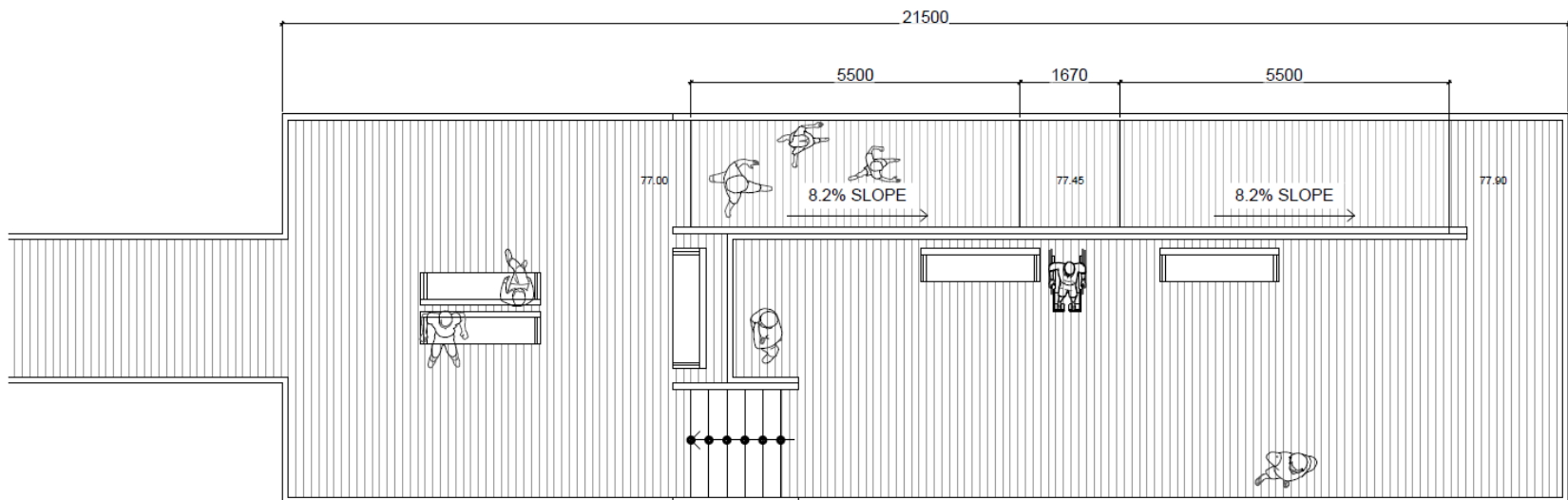




# Scenic Outlooks- Boardwalk and Viewing Platform



# Scenic Outlooks- Boardwalk and Viewing Platform



Exceeds AODA for Recreational Trails and Follows Best Practices / COM Accessibility Guidelines

Boardwalk Lookout Platform



# Beach Access

## A Note on Beach Access

- Cobble Beach... is a rocky and dynamic shore treatment designed to handle wave energy and provide better near shore habitat for fish.



## Beach Access

### A Note on Beach Access

- Informal armour stone steps to provide access to entrance drum and primary trail from Marie Curtis Park Beach
- Waterfront Trail access from Marie Curtis Park is accessible







**Questions?**