

City of Mississauga

# Paul Coffey Park Redevelopment

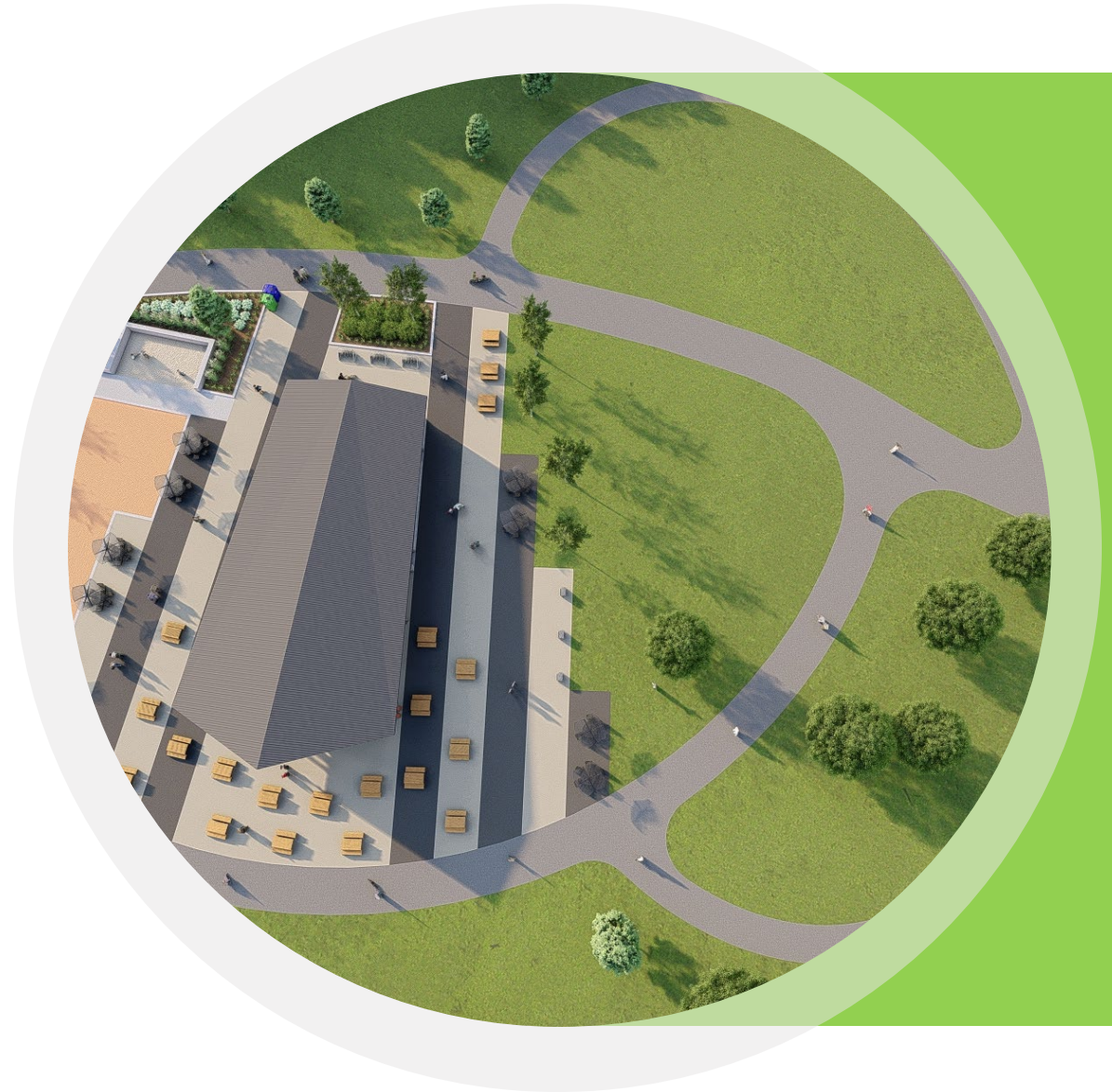
Presentation To Accessibility  
Advisory Committee

---



# Meeting Agenda

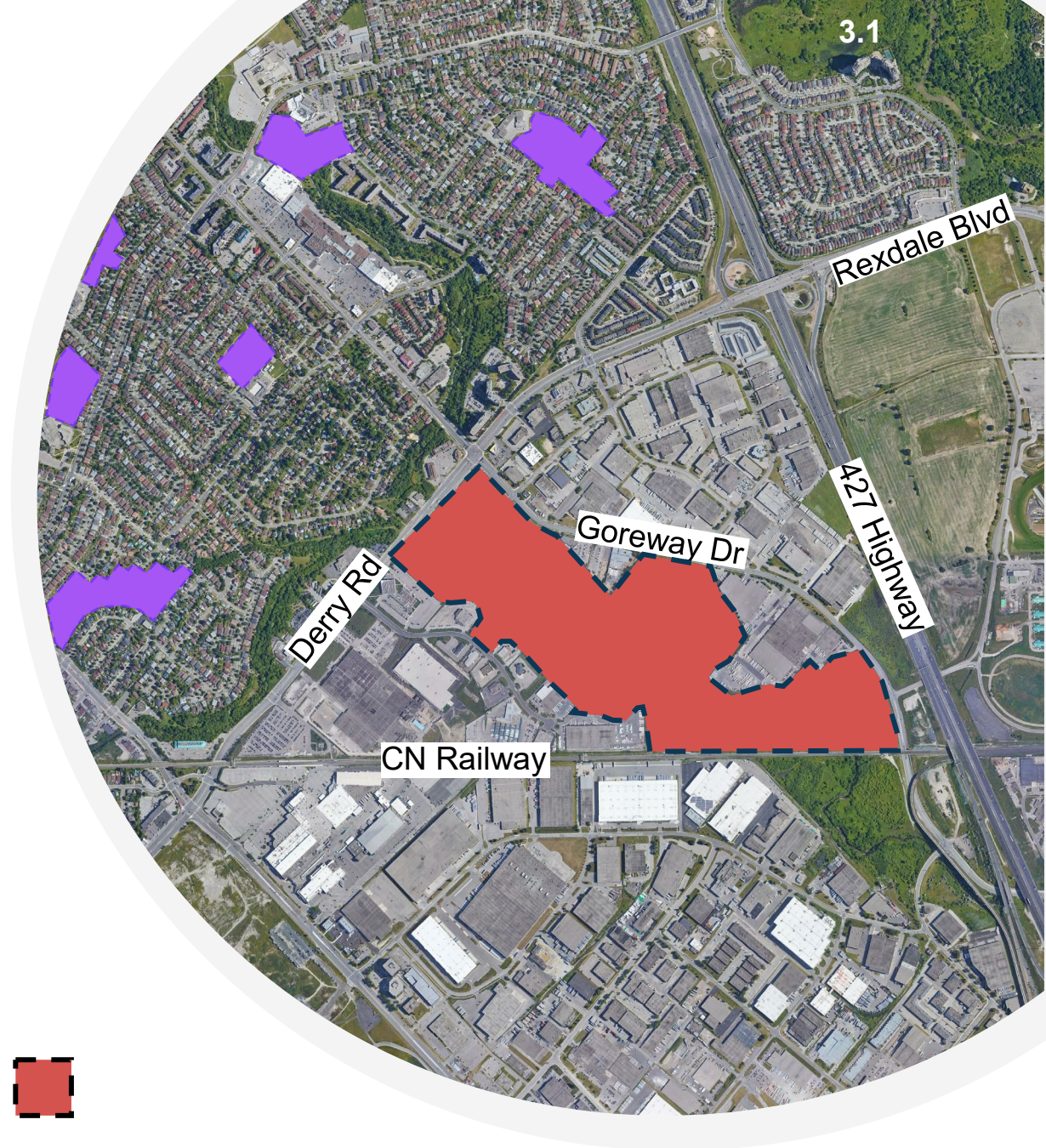
- Introductions
- Project Background
- Scope of Redevelopment
- Guiding Accessibility Principles
- Park Redevelopment Program
- Site Circulation
- Accessible Parking
- Site Furnishings
- Surface Materials
- Project Timeline





# Background

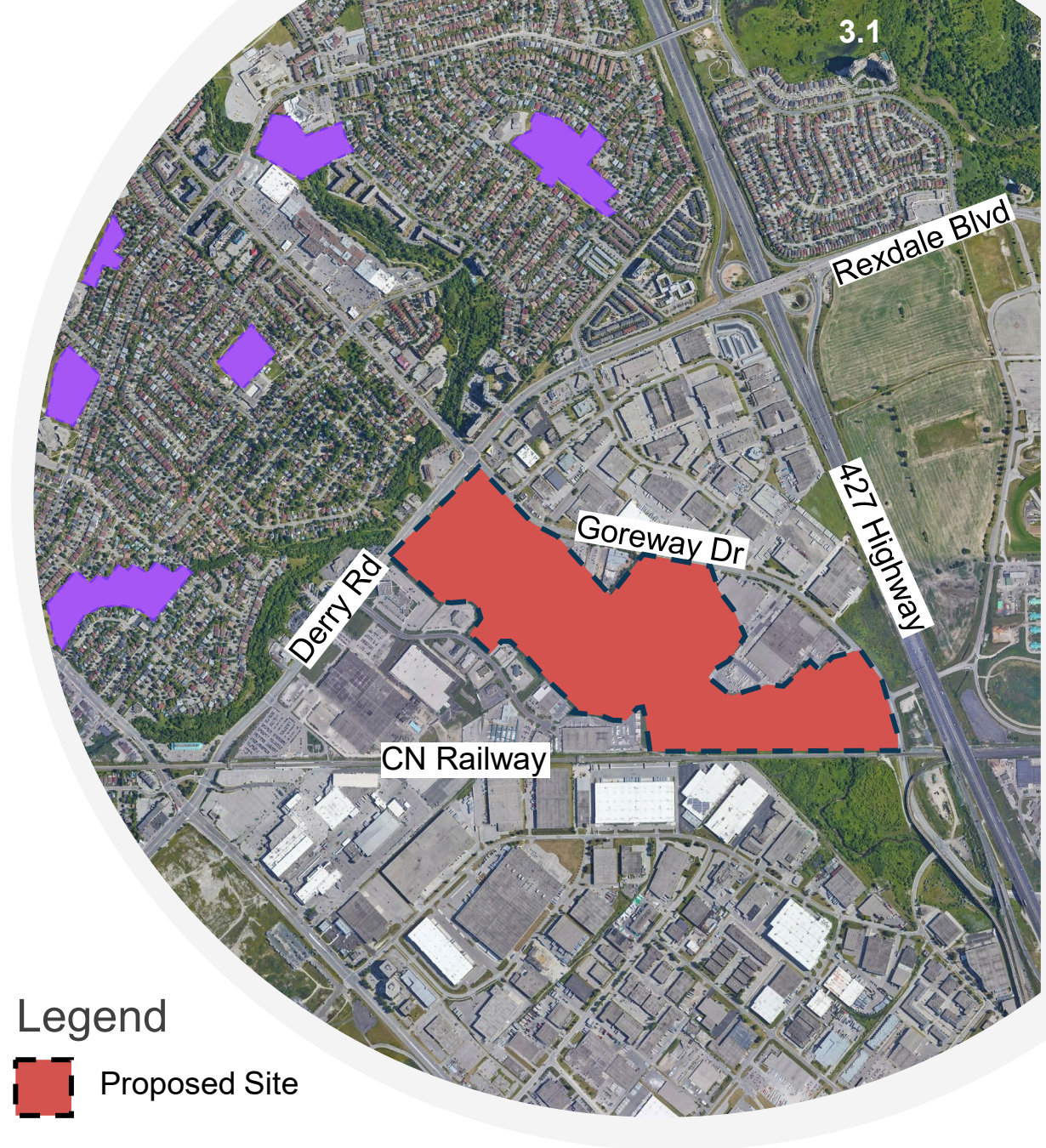
- 45.5 ha (112.4 ac) community park in Malton.
- Delineated by Derry Road to the North, Goreway Drive to the East, the CN Rail to the South and Professional Court to the West.
- Bisected by Mimico Creek and within the TRCA Regulated Floodplain.
- Existing Site Amenities
- Existing Functionality and Accessibility Concerns





# Scope of Redevelopment

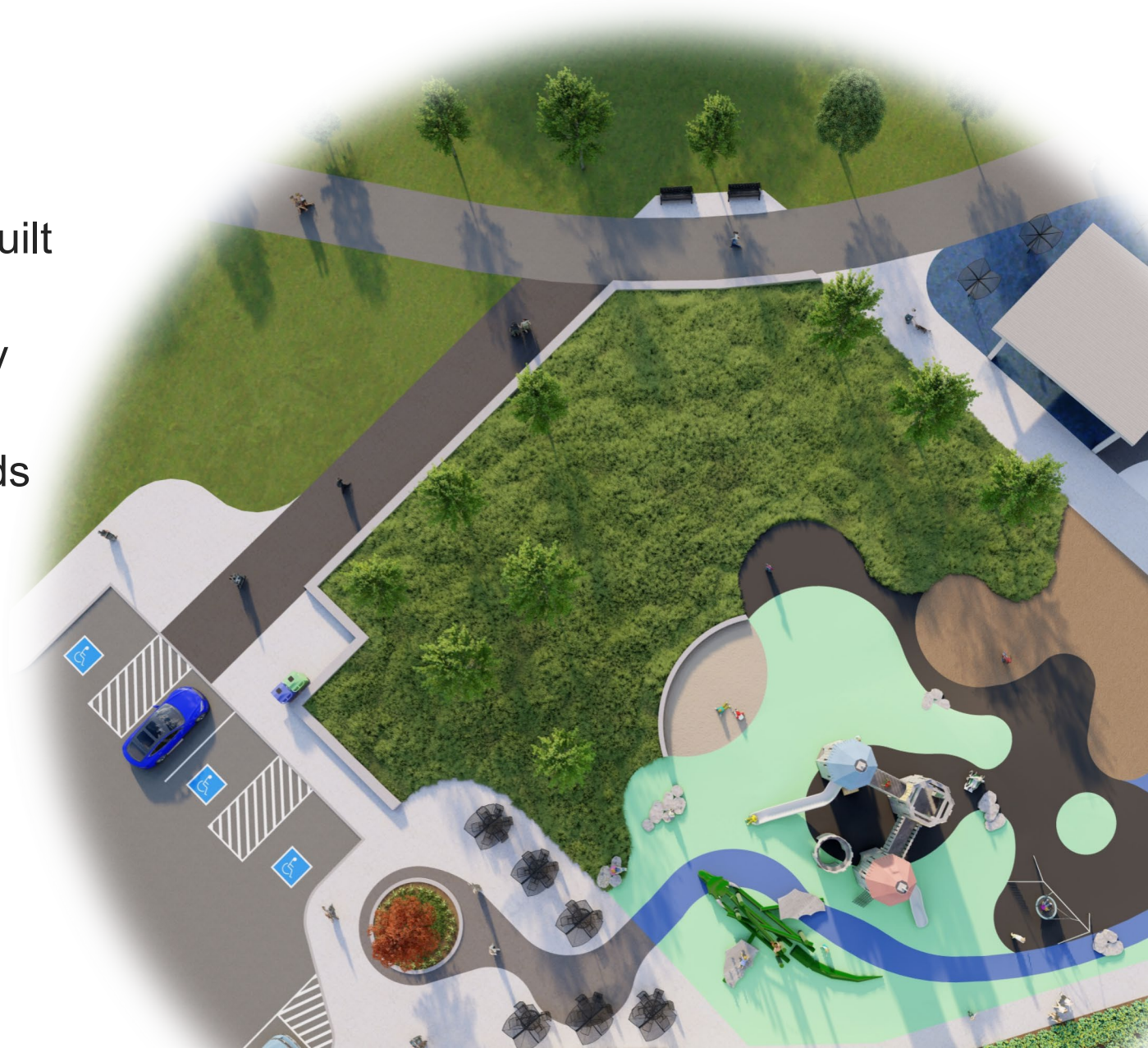
- Arrival Anchor
  - Arena Plaza and Flight Garden
- North Anchor
  - Picnic and Playground Area
- TRCA Lands





# Guiding Accessibility Principles

- Accessibility for Ontarians with Disabilities Act (AODA)
  - Customer Service Standards
  - Design of Public Spaces Standards (Built Environment)
- City of Mississauga Multi-Year Accessibility Plan
- 2015 Facility Accessibility Design Standards

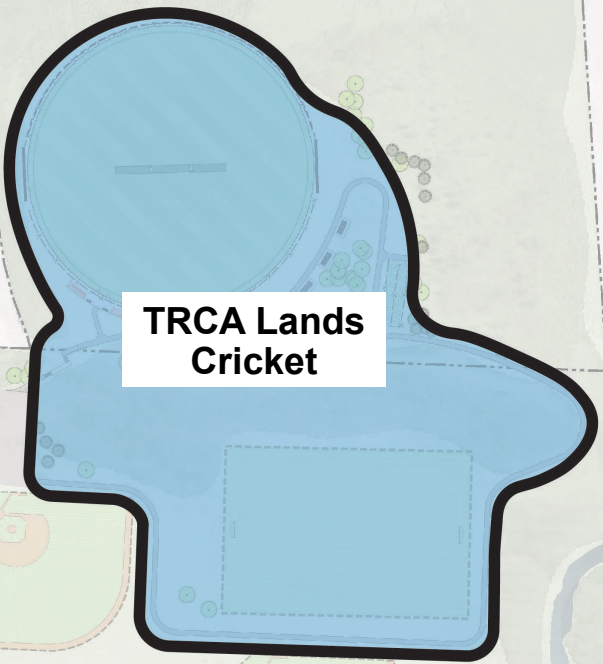




# Paul Coffey Park Master Plan



**Arrival Anchor  
Arena Plaza**



**TRCA Lands  
Cricket**



**North Anchor  
Picnic and  
Playground Area**



**Arrival Anchor  
Flight Garden**



# Arrival Anchor – Arena Plaza

Park Program Includes Accessible Features such as:

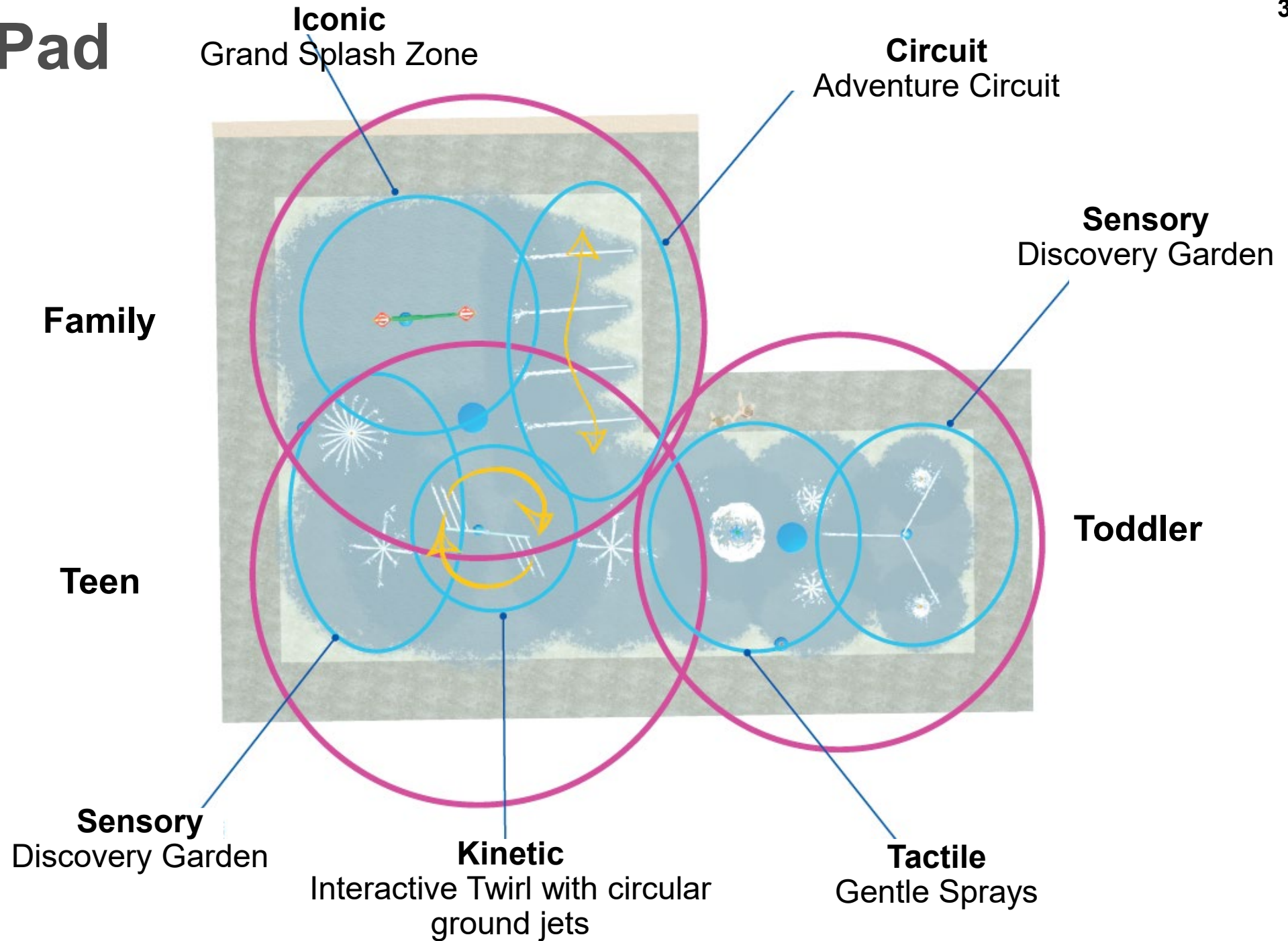
- Spray Pad;
  - Water Play Elements
  - High Contrast Concrete Paving
  - Roll In Roll Out Access
- Playground Expansion;
  - Play Elements
  - High Contrast Rubber Surfacing
- Civic Plaza;
  - Site Furnishings
  - High Contrast Concrete Paving
  - Artificial Turf
  - Slopes lower than 5%
- Junior Skate Park;
  - Perimeter Seating Areas / Views
  - Roll In Roll Out Access





# Spray Pad

3.1





# Water Play

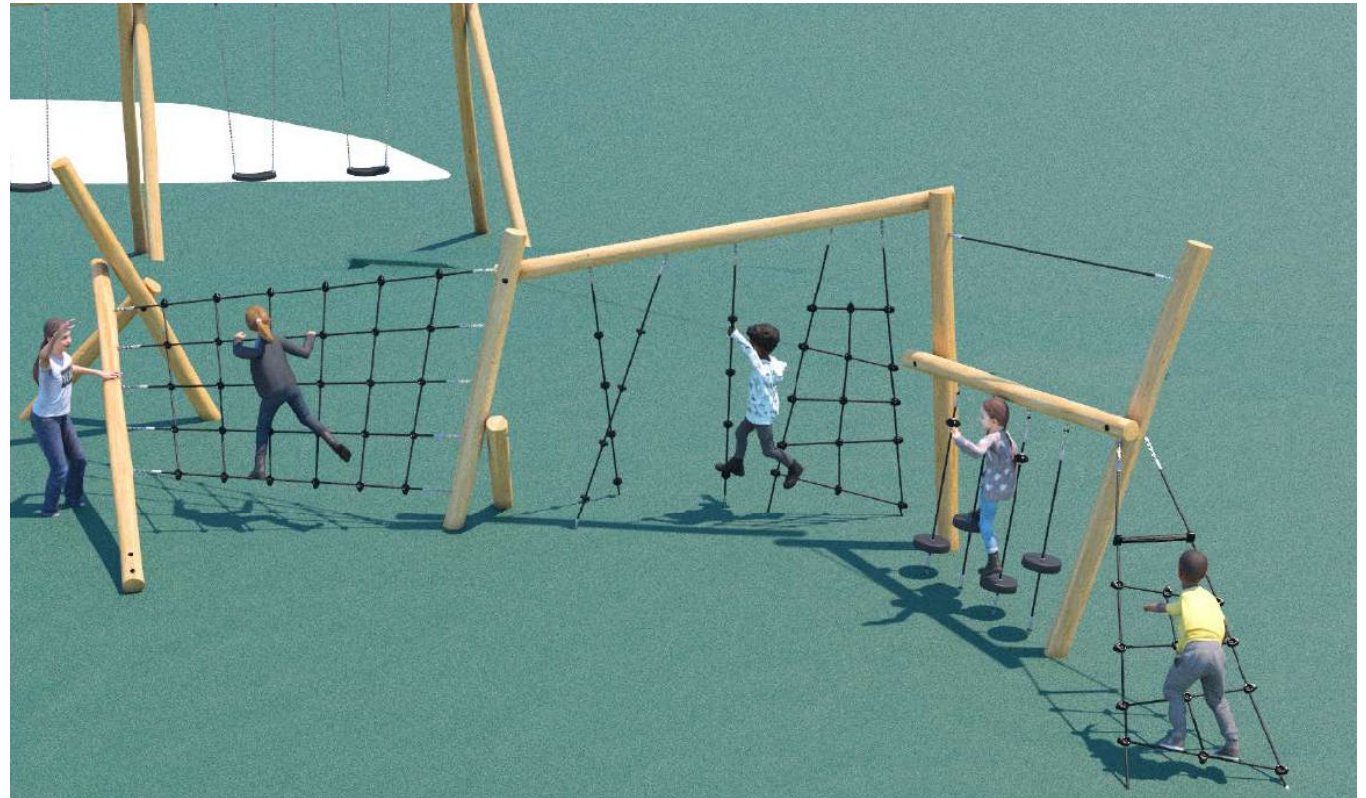
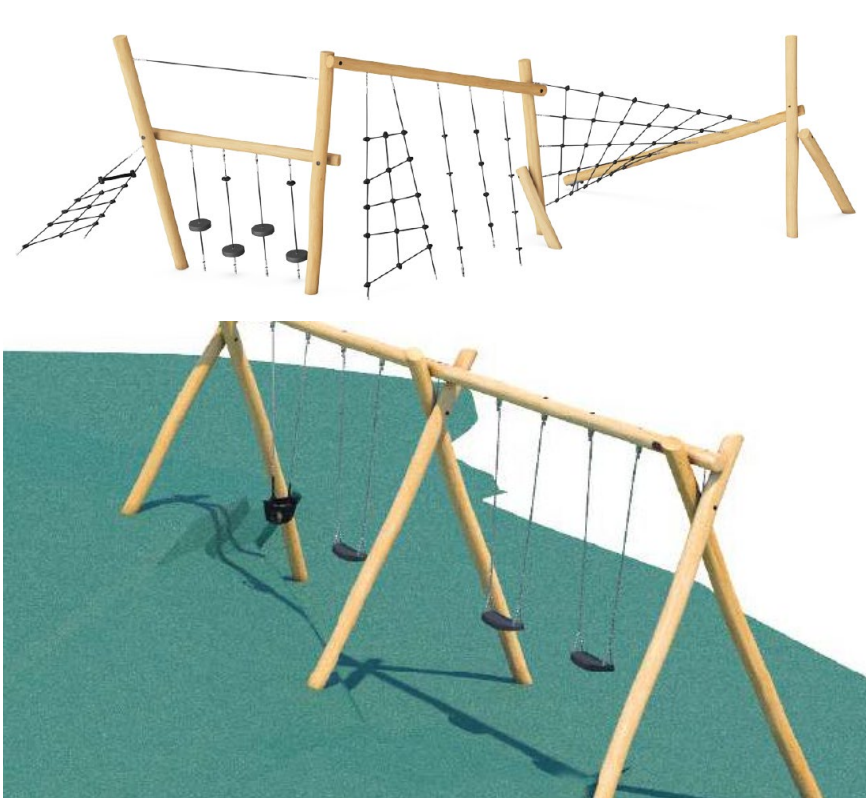




# Playground Expansion

## Play Elements

	ACCESSIBLE ELEVATED ACTIVITIES	ACCESSIBLE GROUND LEVEL ACTIVITIES	ACCESSIBLE GROUND LEVEL PLAY TYPES
Present	0	4	2
Required	0	2	2





# Arrival Anchor – Flight Garden

Park Program Includes Accessible Features such as:

- Civic Plaza;
  - Site Furnishings
  - High Contrast Concrete and Unit Paving
  - Slopes lower than 5%
- Accessible Metal Deck / Lookout Feature;
  - Handrails
  - Slopes lower than 5%
- Proposed 4m Wide Accessible Bridge;
  - Canadian highway Bridge Design Code - 2019 (CHBDC-2019) CSA-S6-19
  - Handrails
  - Slopes lower than 1%





# North Anchor - Picnic and Playground Area

Park Program Includes Accessible Features such as:

- Proposed Playground;
  - Play Elements
  - Wood Fibre Surfacing (CA Guidelines)
  - Accessible Play Curb
- Fieldhouse Building;
  - Universal Washroom
  - High Contrast Materials
- Civic Plaza;
  - Site Furnishings
  - High Contrast Concrete and Unit Paving
  - Slopes lower than 5%
- Dog Park





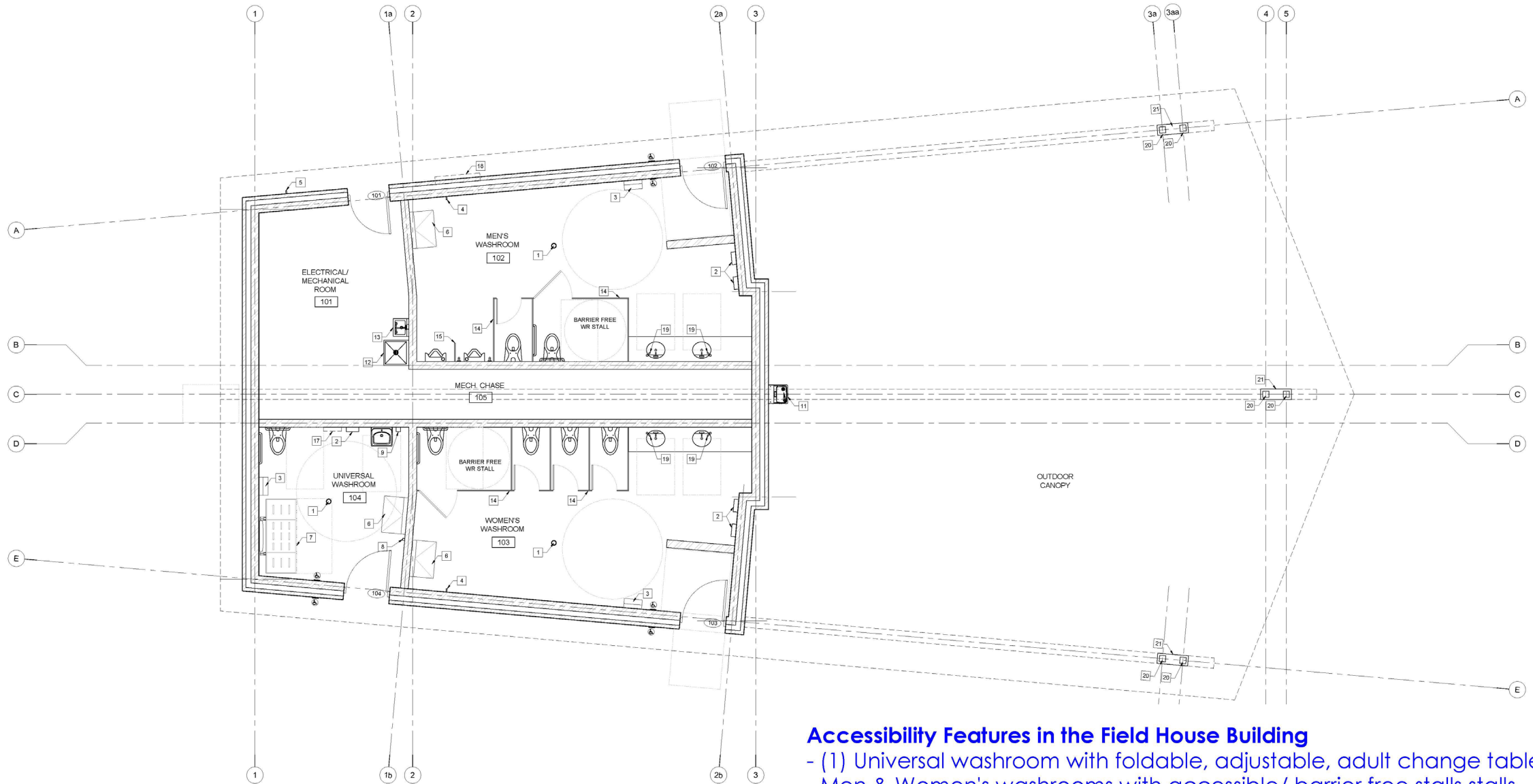
# Playground

3.1





# Field House Building

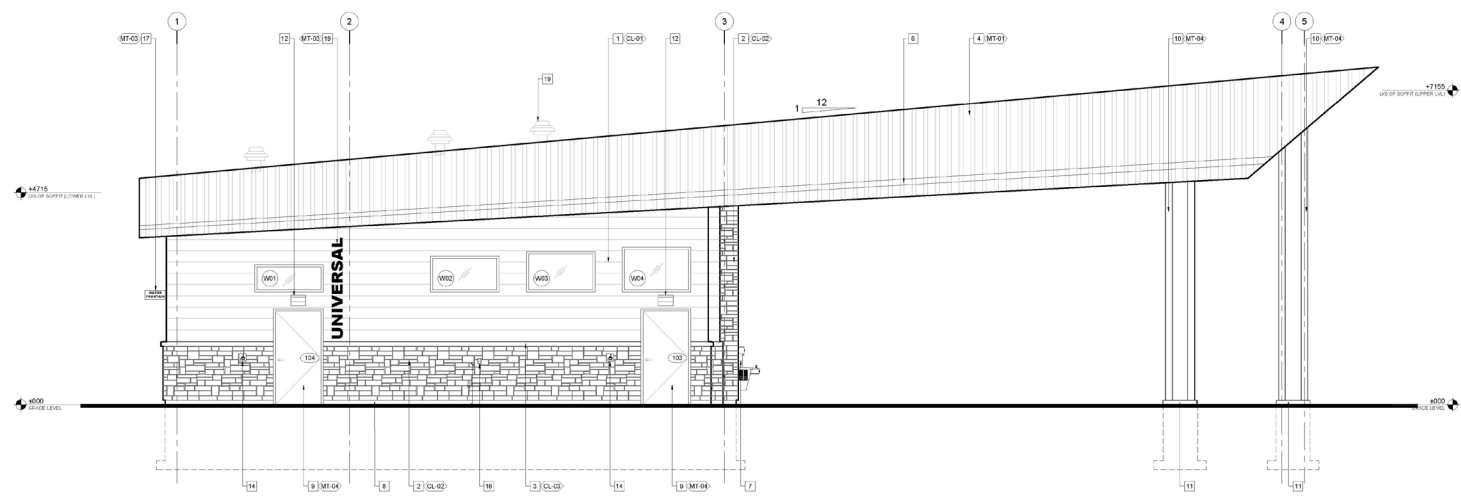


## Accessibility Features in the Field House Building

- (1) Universal washroom with foldable, adjustable, adult change table.
- Men & Women's washrooms with accessible/ barrier free stalls.



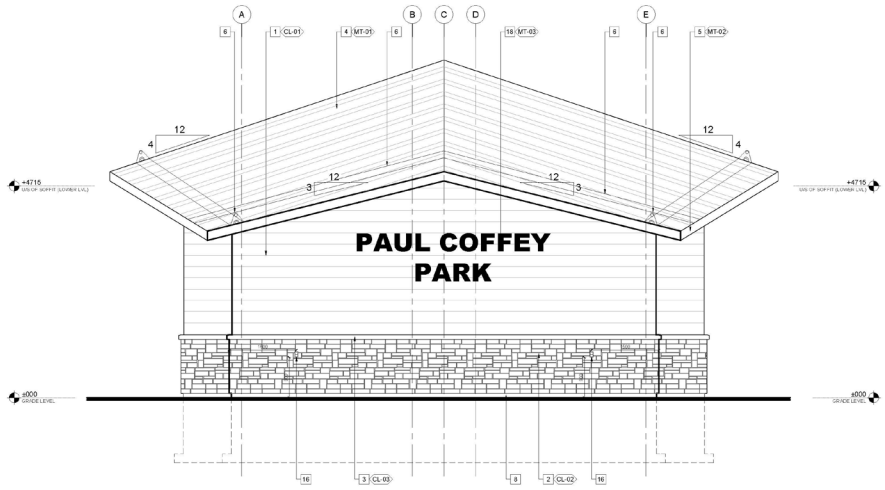
# Field House Building



01 south elevation  
SCALE | 1:50

## Accessibility Features in Exterior Elevations

- Colour contrast between doors and wall panels.
- Visible signage for MEN'S, WOMEN'S and UNIVERSAL washrooms.
- Audio/Visual emergency signal for universal washroom.
- Power push buttons for all washrooms.

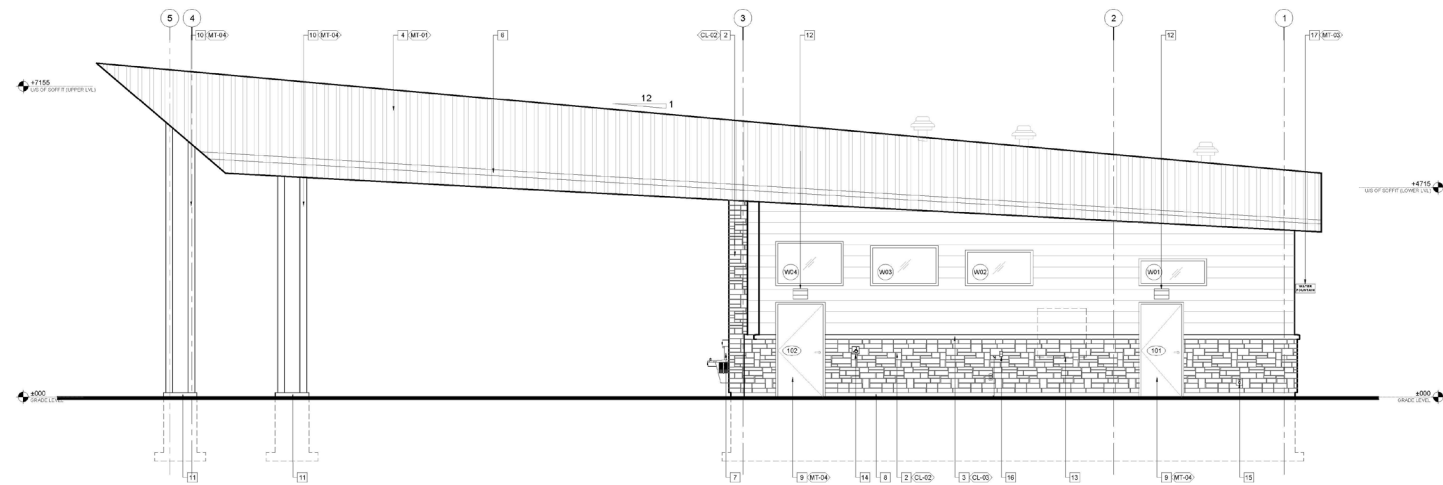


02 west elevation  
SCALE | 1:50





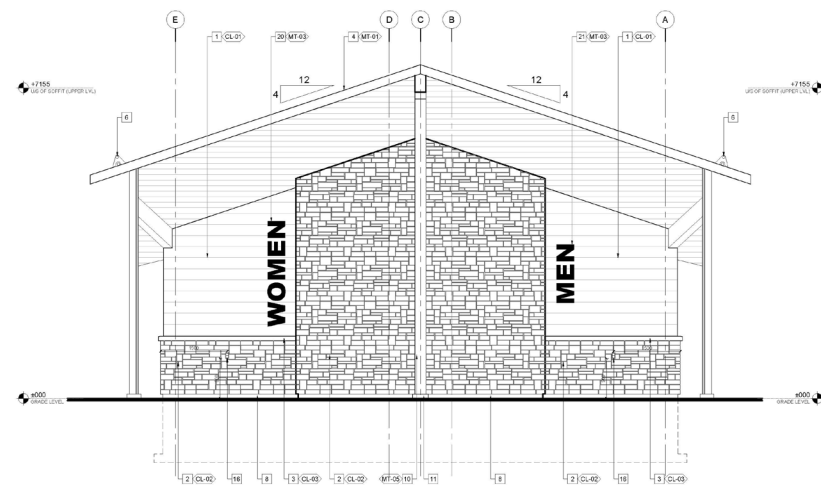
# Field House Building



01 north elevation  
SCALE 1:50

## Accessibility Features in Exterior Elevations

- Colour contrast between doors and wall panels.
- Visible signage for MEN'S, WOMEN'S and UNIVERSAL washrooms.
- Audio/Visual emergency signal for universal washroom.
- Power push buttons for all washrooms.



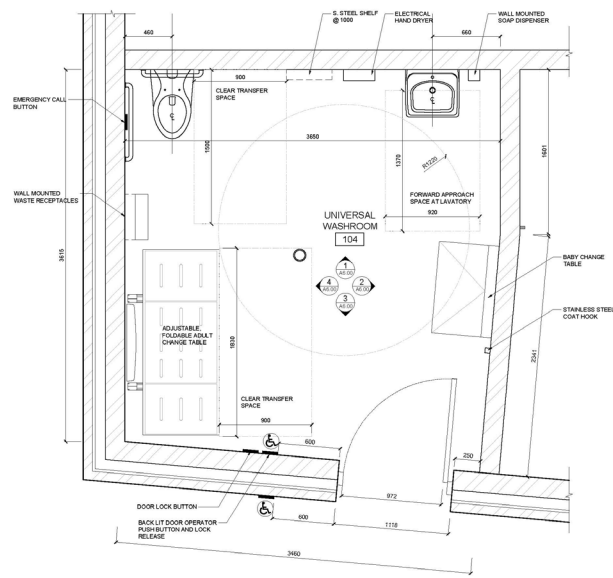
02 east elevation  
SCALE 1:50





# Field House Building

3.1

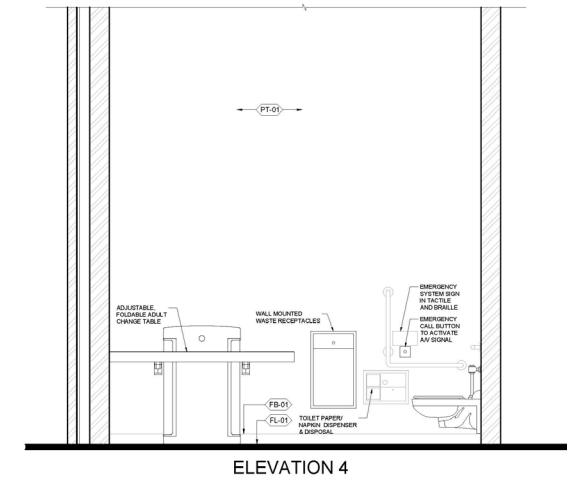
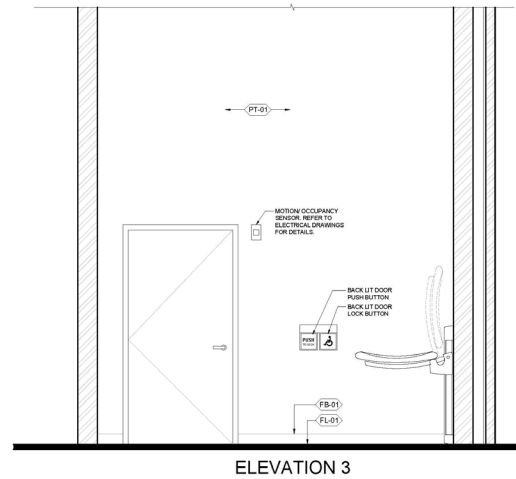
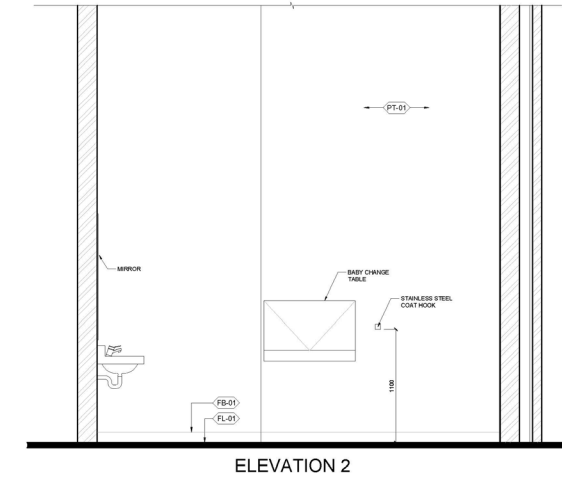
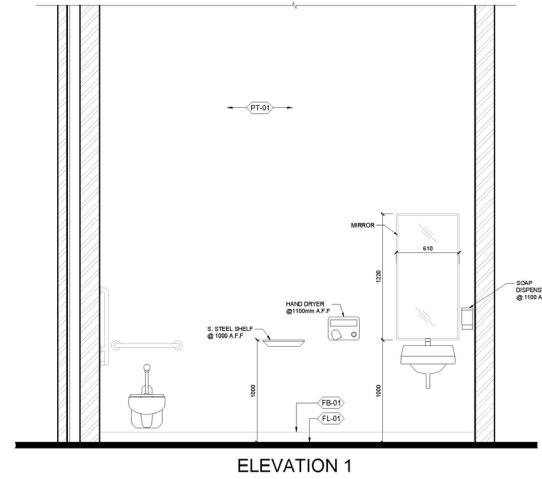


## 01 universal washroom detailed plan

SCALE | 1:25

### Universal Washroom Features

- 2440 Diameter wide clearance circle as per City of Mississauga FADS.
- 972 wide door opening with power push button and inside lock button.
- Adjustable, foldable adult change table.
- Emergency call button with exterior audio/visual signal.
- AODA & Code compliant washroom accessories; mirror, shelf, hand dryer, soap dispenser... etc.
- Colour contrast between interior finishes; dark grey floors, black baseboard and off-white walls.
- Baby change table.

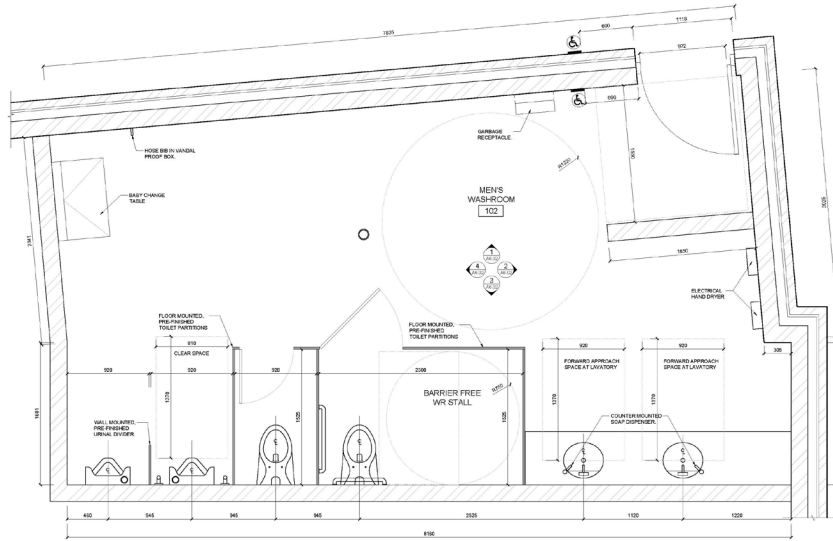


## 02 universal washroom interior elevations

SCALE | 1:25

# Field House Building

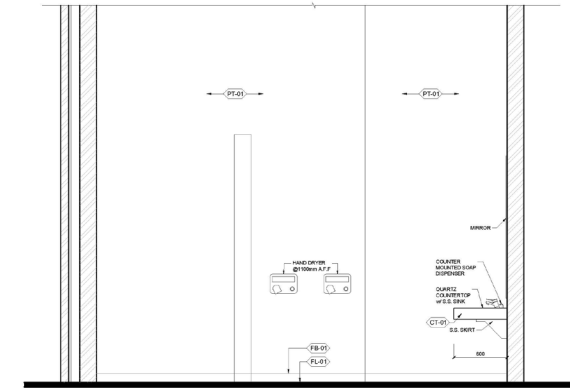
3.1



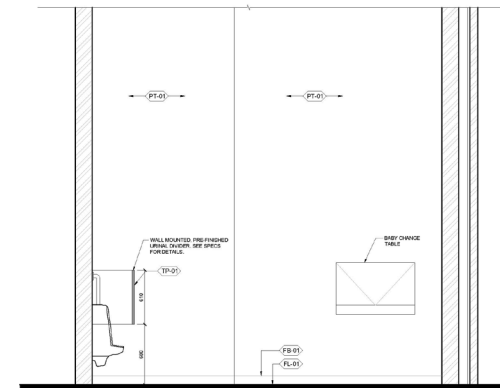
**01 men's washroom detailed plan**  
SCALE: 1:25

## Men's Washroom Features

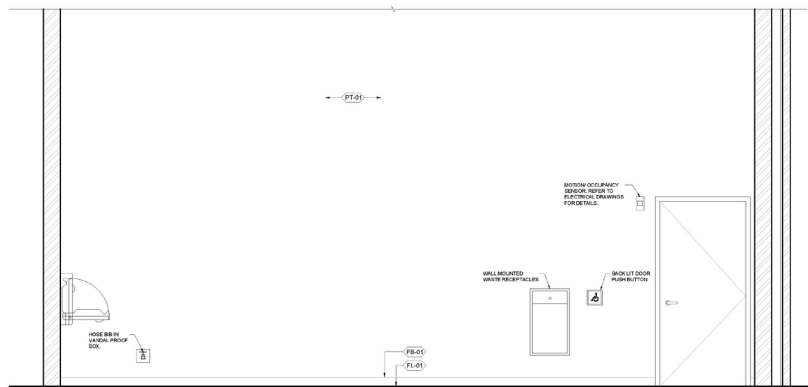
- Accessible entrance with 972 wide door opening with power push button.
- (1) Accessible washroom stall.
- (2) Accessible lavatories.
- (1) Accessible Urinal.
- AODA & Code compliant washroom accessories; mirror, hand dryer, soap dispenser... etc.
- Colour contrast between interior finishes; dark grey floors, black baseboard and off-white walls.
- Baby change table.



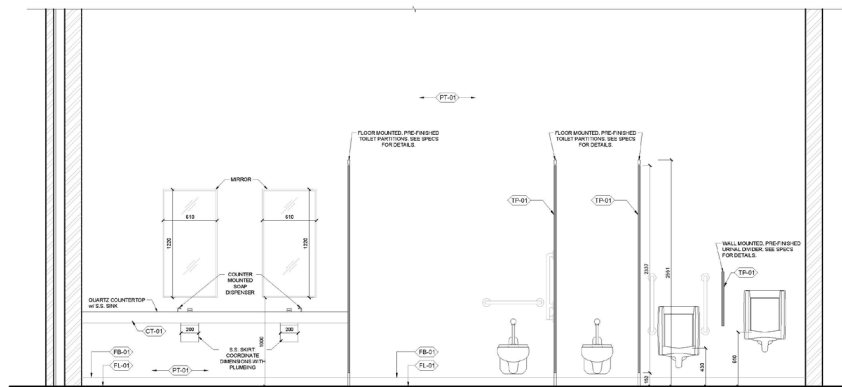
ELEVATION 2



ELEVATION 4



ELEVATION 1



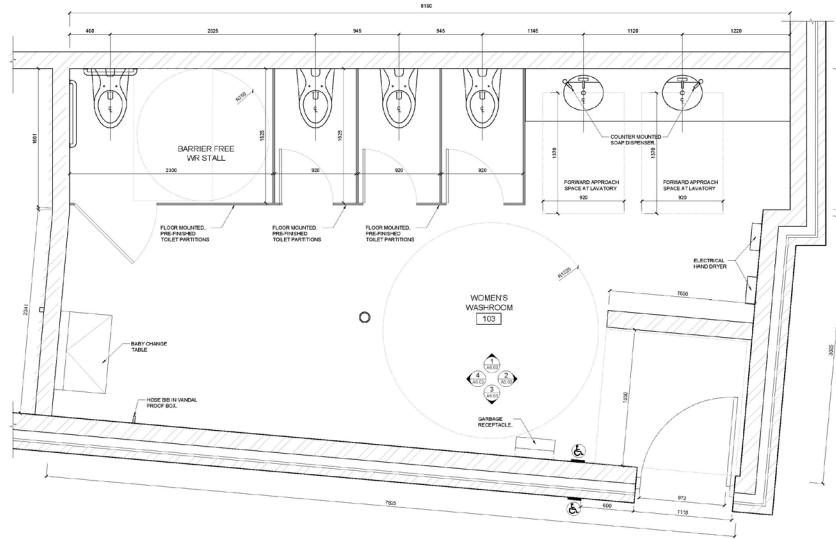
ELEVATION 3

**02 female washroom interior elevations**  
SCALE: 1:25



# Field House Building

3.1

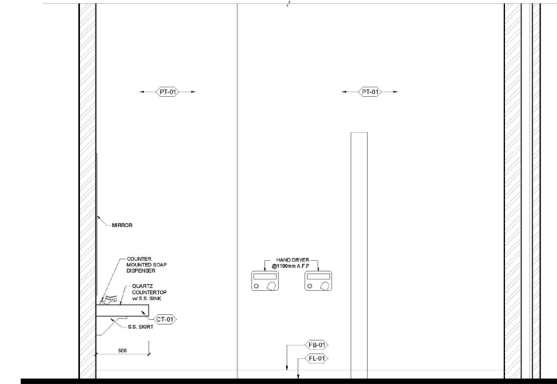


## 01 women's washroom detailed plan

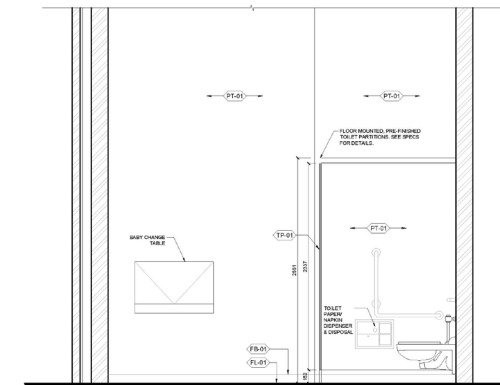
SCALE 1:25

### Women's Washroom Features

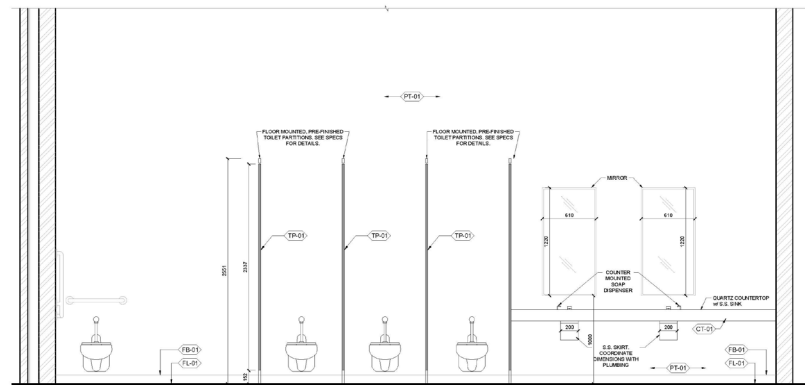
- Accessible entrance with 972 wide door opening with power push button.
- (1) Accessible washroom stall.
- (2) Accessible lavatories.
- AODA & Code compliant washroom accessories; mirror, hand dryer, soap dispenser... etc.
- Colour contrast between interior finishes; dark grey floors, black baseboard and off-white walls.
- Baby change table.



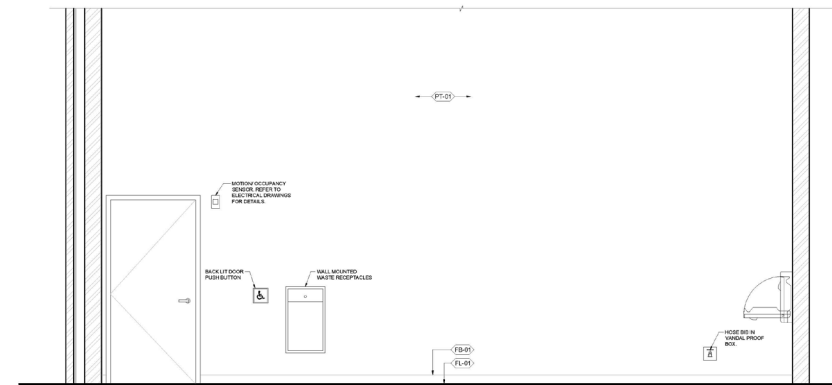
ELEVATION 2



ELEVATION 4



ELEVATION 1

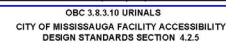
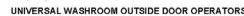
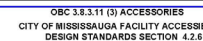
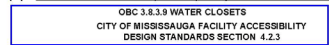
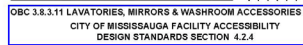


ELEVATION 3

## 02 women's washroom interior elevations

SCALE 1:25

### 3.1



**Standard Barrier Free  
Details that complies  
with both OBC and  
City of Mississauga  
Standards**



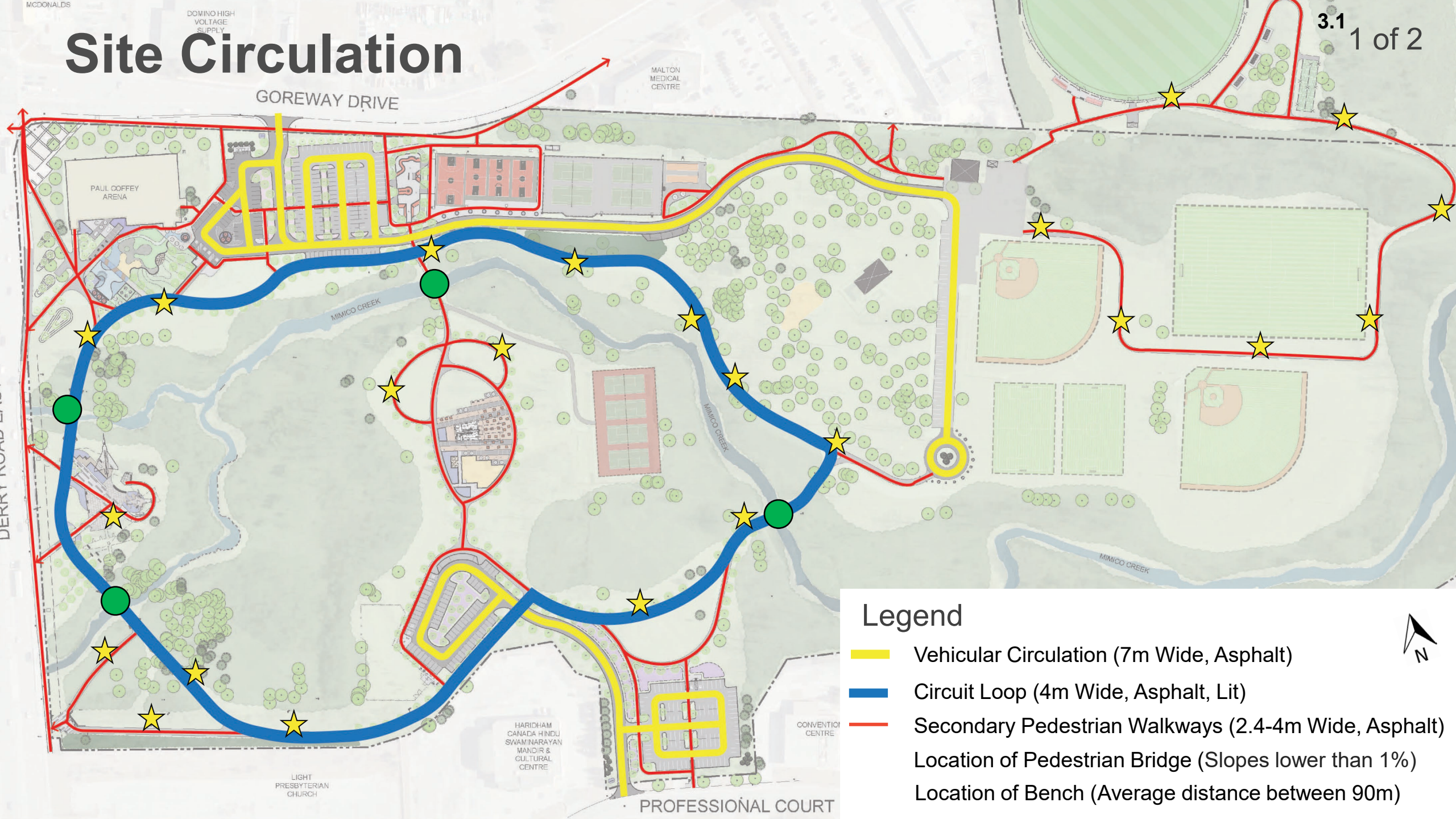
# TRCA Lands - Cricket

- Cricket Pitch and Practice Cage;
- Bleachers with Accessible Spaces;
- Site Furnishings
  - Player Benches
  - Shade Structures










# Site Circulation



## Legend

-  Vehicular Circulation (7m Wide, Asphalt)
-  Circuit Loop (4m Wide, Asphalt, Lit)
-  Secondary Pedestrian Walkways (2.4-4m Wide, Asphalt)
-  Location of Pedestrian Bridge (Slopes lower than 1%)
-  Location of Bench (Average distance between 90m)





# Site Circulation

## Flush Surfaces

- Curb depressions will be implemented where necessary.

## Tactile Warning Strips

- Parking lots, curb depressions, crossings with tactile warning strips will be implemented.

## Slopes

- Maximum 5% slopes over all hardscape surfaces with most under 2.5%. Walkways to be minimum 2.4m and maximum 4m wide.

## Bench / Rest Locations

- Accessible benches will be placed min. every 90m along the circuit loop.

## Lighting

- Lighting elements will be in parking lots and circuit loop.





# Accessible Parking

LOCATION	TOTAL PARKING SPACES	ACCESSIBLE STALLS REQUIRED	TOTAL TYPE 'A' STALLS	TOTAL TYPE 'B' STALLS
Lot 1	158	6	3	3
Lot 2	68	3	2	2
Lot 3	93	4	2	2
Total	319	13	7	7



A Total Of 14 Accessible Parking Spots

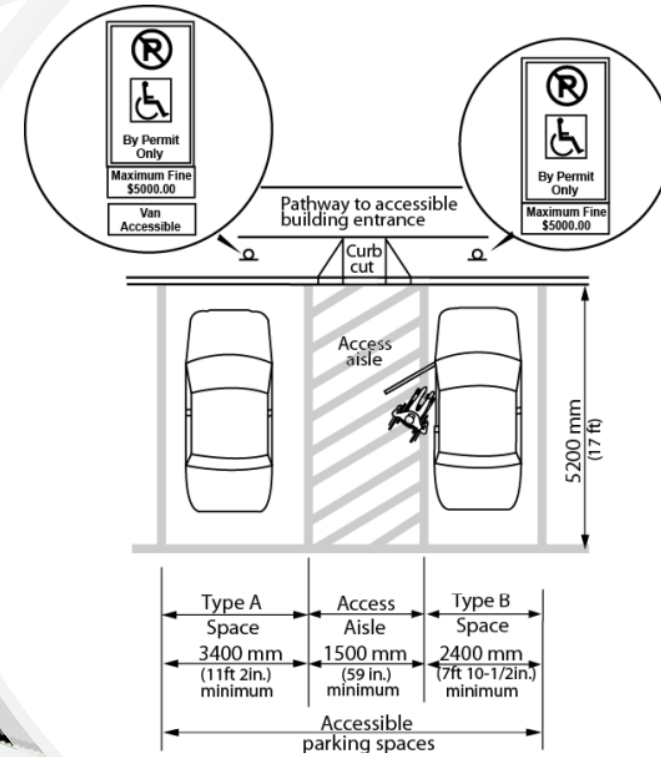
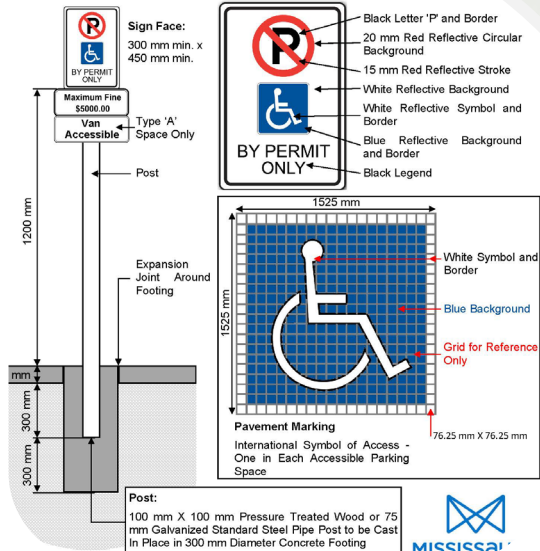
# Accessible Parking

3.1

## Pavement Marking



## Parking Sign



## Parking Stalls



# Site Furnishings

- Accessible Umbrella Tables
- Bench Pad Extensions
- Accessible Picnic Tables

Paul Coffey Park will exceed the FADS 20% minimum requirement of accessible tables on site.



# Surface Materials

Asphalt Paving



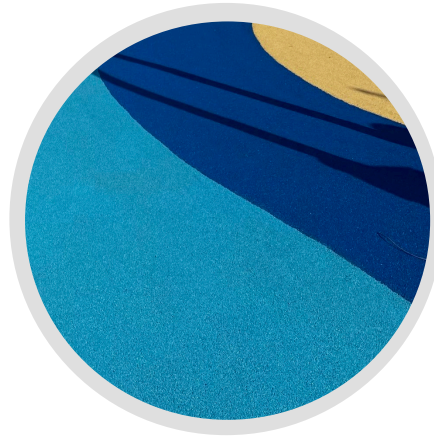
Pedestrian walkways, fire access route, and parking lot will be constructed with asphalt paving.

Wood Fibre Surfacing



Playgrounds will be constructed with wood fibre surfacing.

Poured-in-place Rubber Surfacing



Rubber safety surfacing will be utilized in the playground area to provide a smooth and safe AODA compliant surface.

Unit Paving



Pedestrian walkways and open plaza areas will be constructed with unit paving.

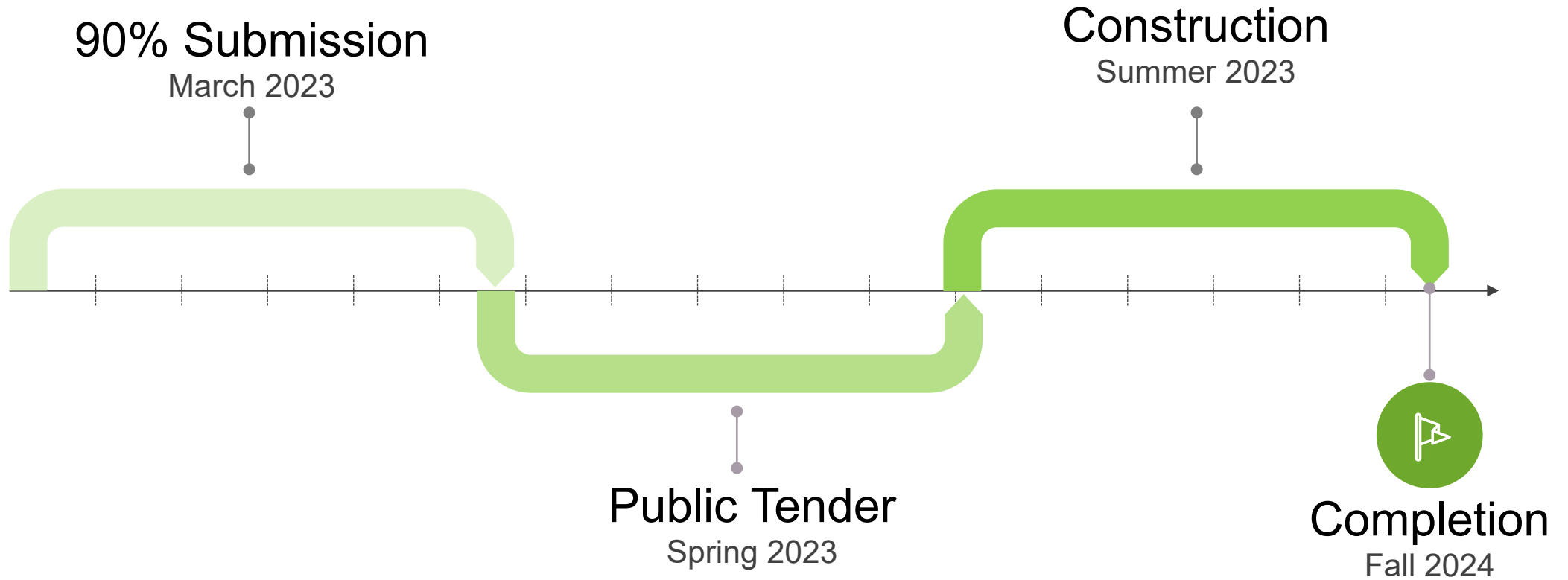
Concrete Paving



Concrete paving will be utilized for the open plaza areas, splash pad, and site furnishing pads.



# Project Timeline





# Thank You

---

## Questions?