



City of Mississauga

Gulleden Park Redevelopment

Presentation to Accessibility
Advisory Committee

Meeting Agenda

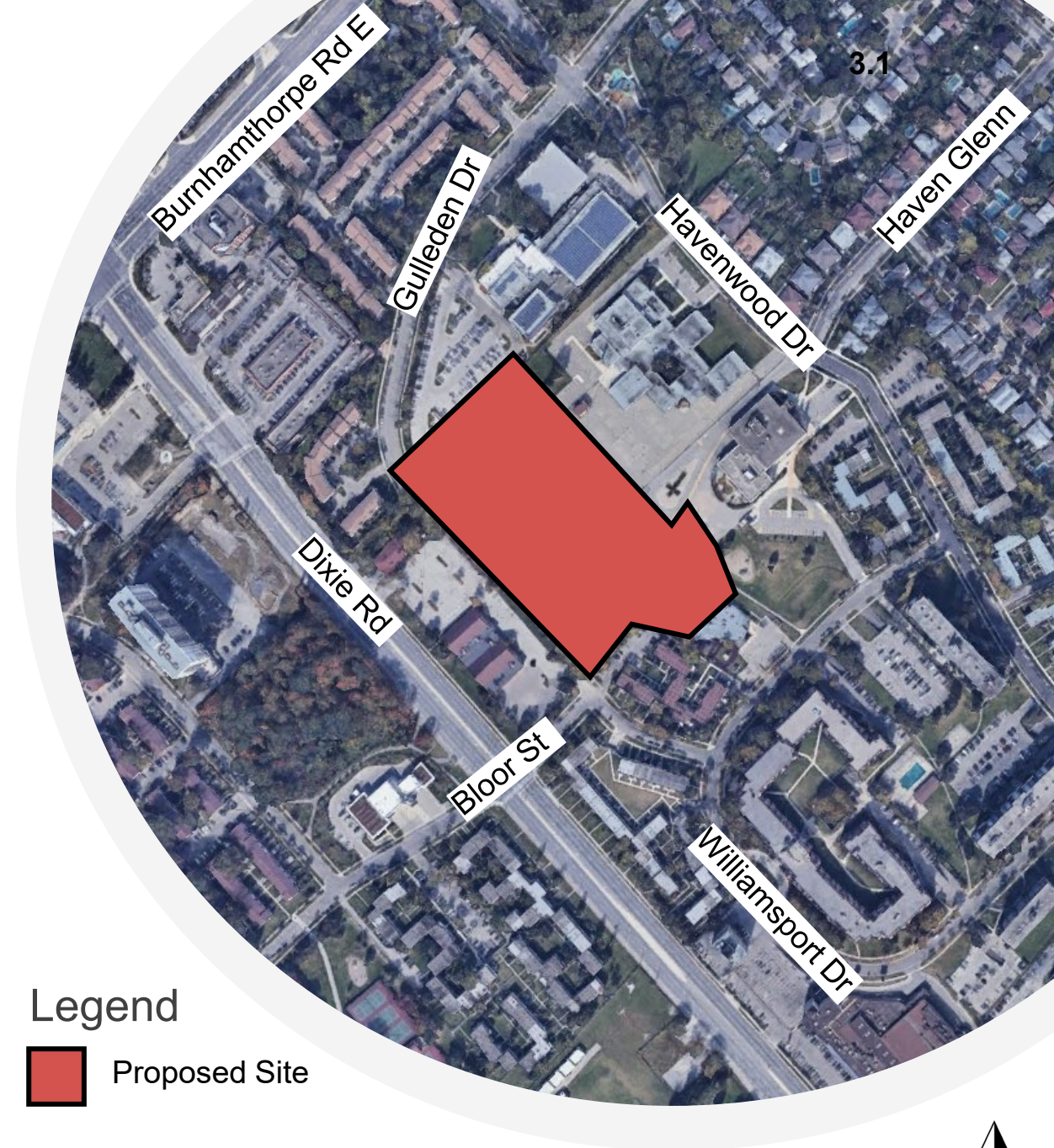
3.1

- Introductions
- Project Background
- Scope of Redevelopment
- Guiding Accessibility Principles
- Park Redevelopment Program
- Site Circulation
- Site Furnishings
- Surface Materials
- Project Timeline



Background

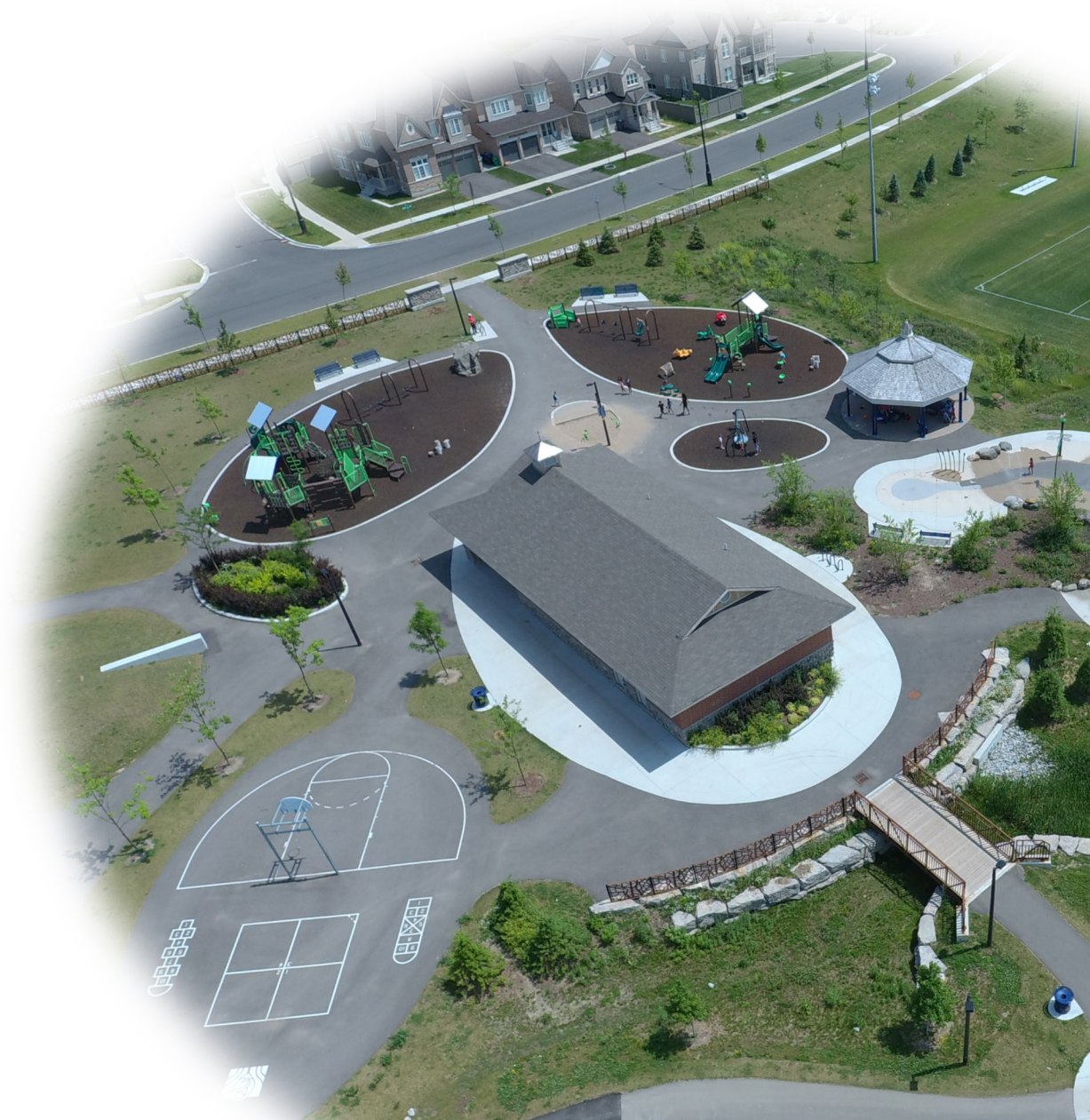
- 2.14 ha (5.3 ac) Community Park in Mississauga
- Located adjacent to Burnhamthorpe Community Centre which is undergoing a redevelopment
- Delineated by Gulleden Drive to the North, Havenwood Drive to the East, Williamsport Road to the South, and Dixie Road to the West.



Guiding Accessibility Principles

3.1

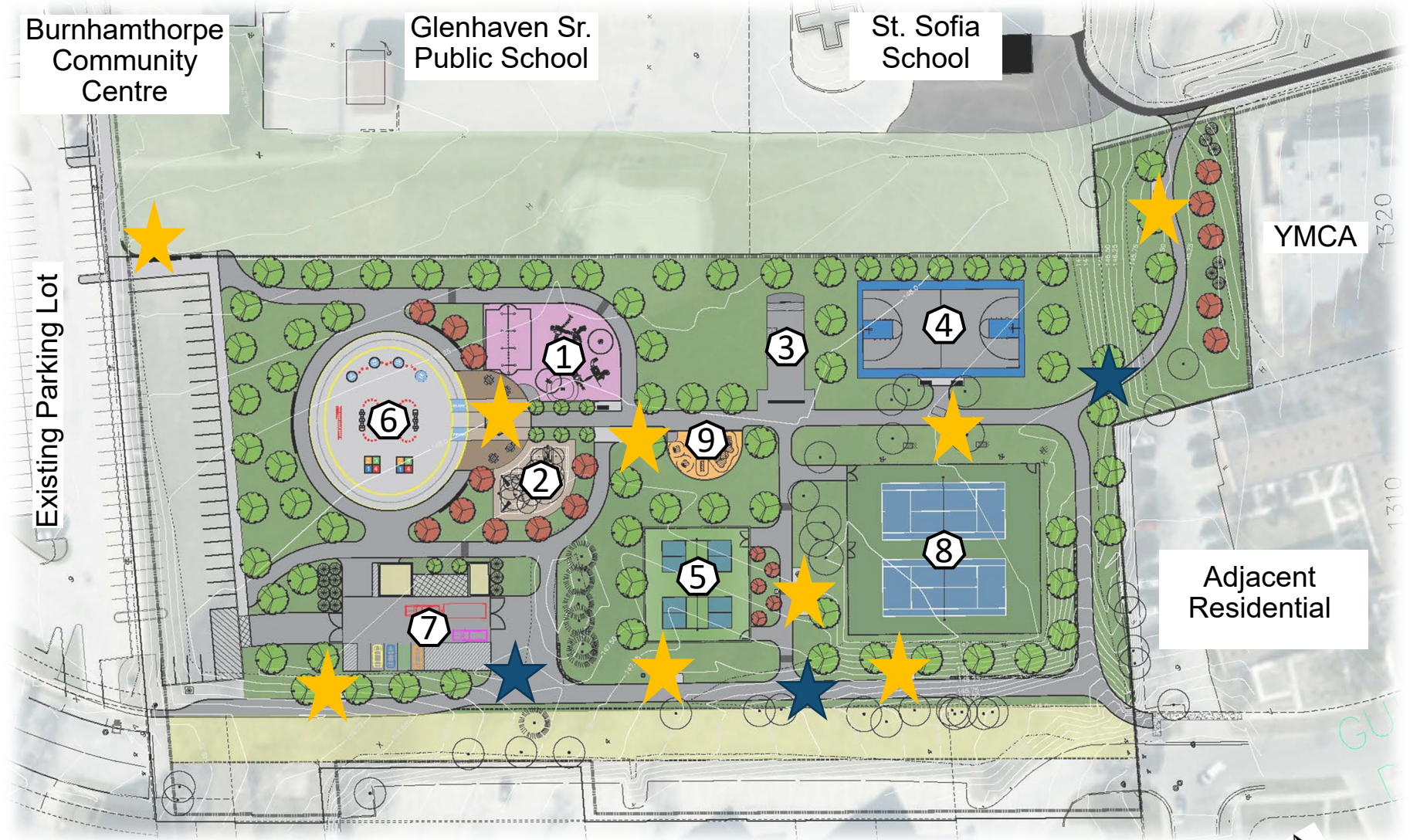
- Accessibility for Ontarians with Disabilities Act (AODA)
 - Customer Service Standards
 - Design of Public Spaces Standards (Built Environment)
- City of Mississauga Multi-Year Accessibility Plan
- 2015 City of Mississauga Facility Accessibility Design Standards



Gulleden Park Master Plan

Program Elements

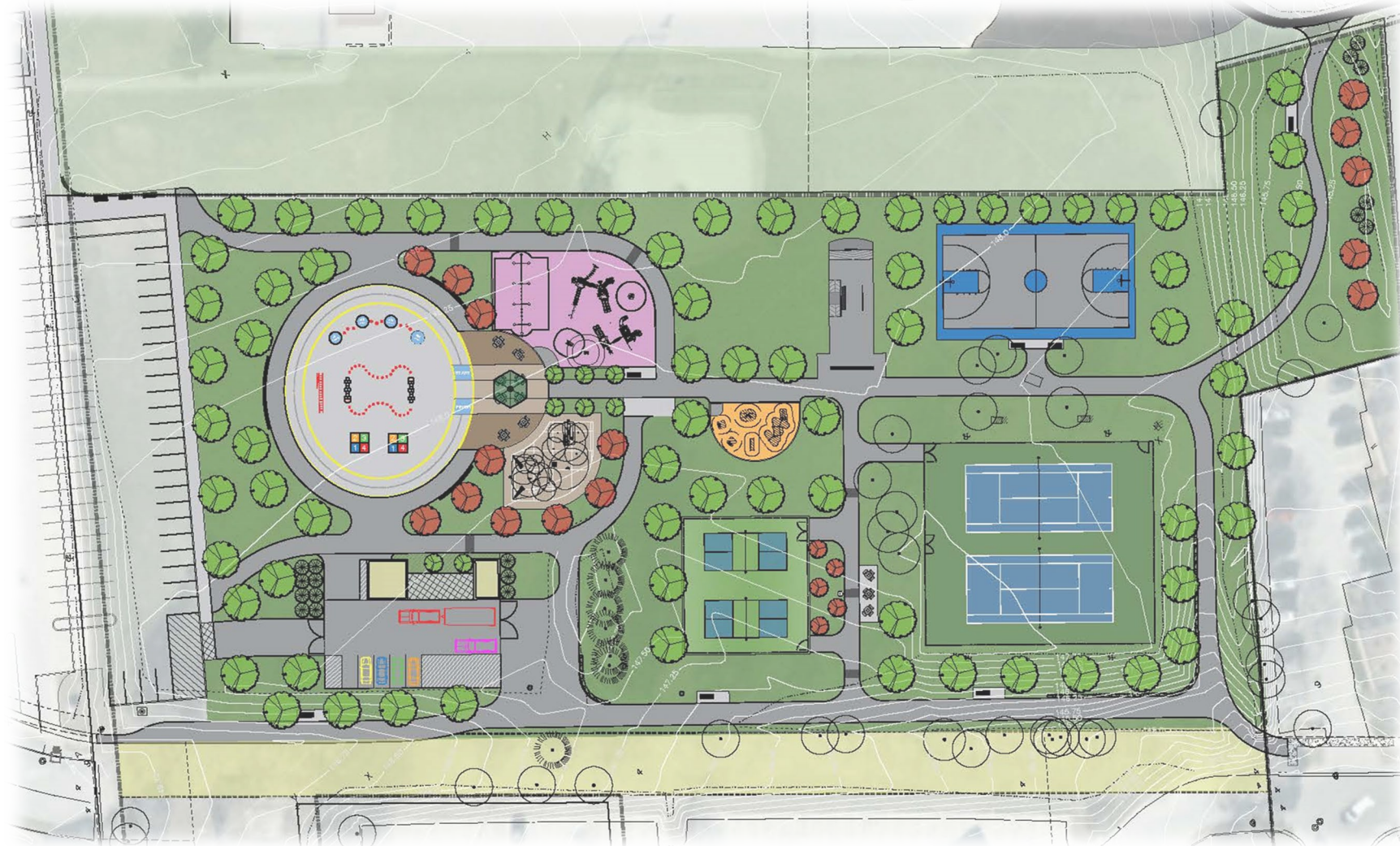
- ① Playground
- ② Spray Pad
- ③ Junior Skateboard Park
- ④ Multi-use Basketball Court
- ⑤ Pickleball
- ⑥ Skating Facility with Creative Play Markings
- ⑦ Park Operations Yard
- ⑧ Existing Tennis Courts
- ⑨ Fitness Area
- ★ Accessible Seating
- ★ Trail



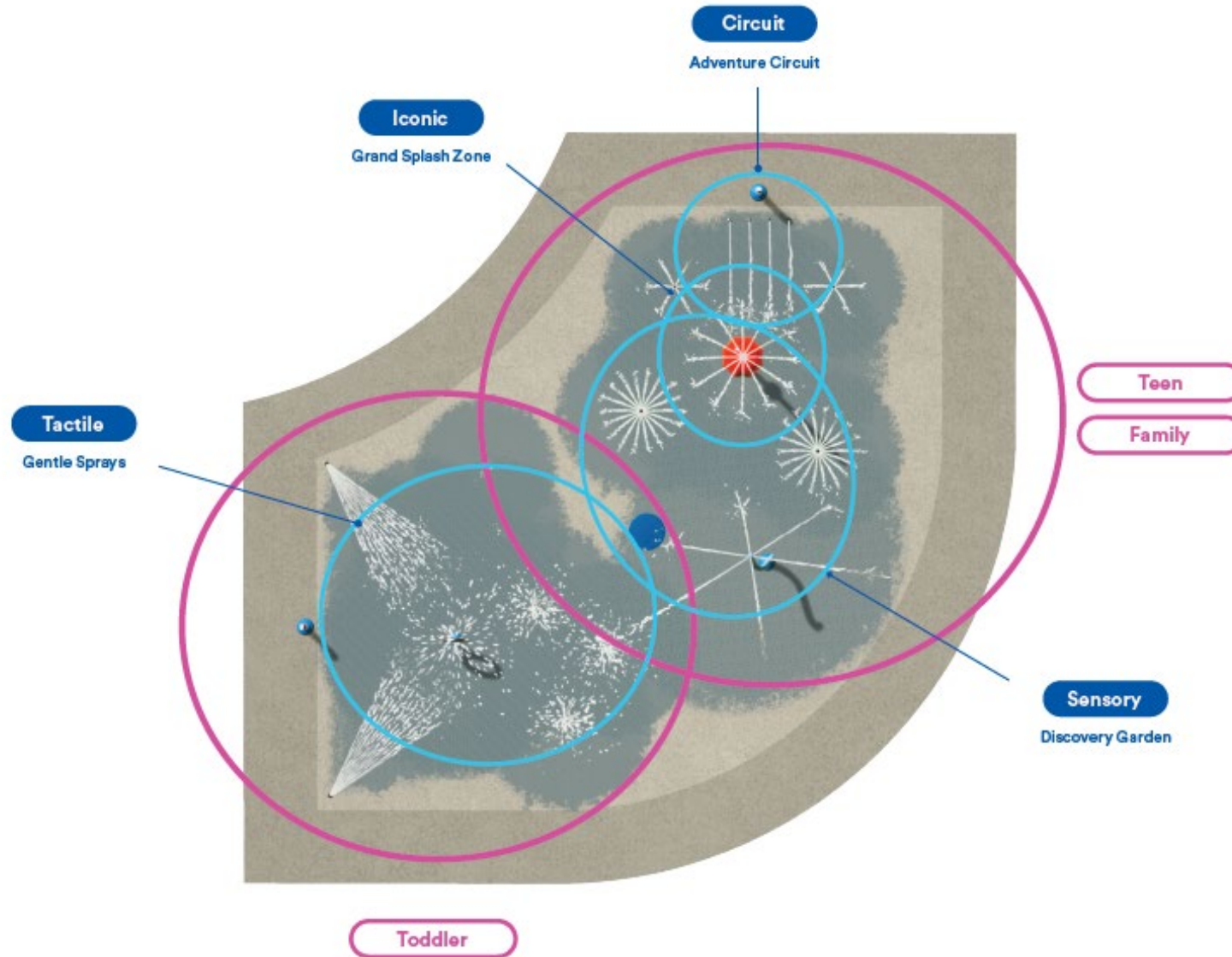
Gulleden Park – Master Plan

Park Program Accessible Features:

- Spray Pad;
 - Spray Pad Elements
 - High Contrast Concrete Paving
 - Roll In Roll Out Access
- Playground;
 - Accessible Play Elements
 - Engineered Wood Safety Fibre
 - Play Ramp
- Plaza;
 - Accessible Site Furnishings
 - High Contrast Concrete Paving
- Junior Skate Park;
 - Perimeter Seating Areas / Views
 - Roll In Roll Out Access
- Multi-Use Court / Pickleball;
 - Perimeter Seating Areas / Views
 - Roll In Roll Out Access
 - Slopes Lower than 5%



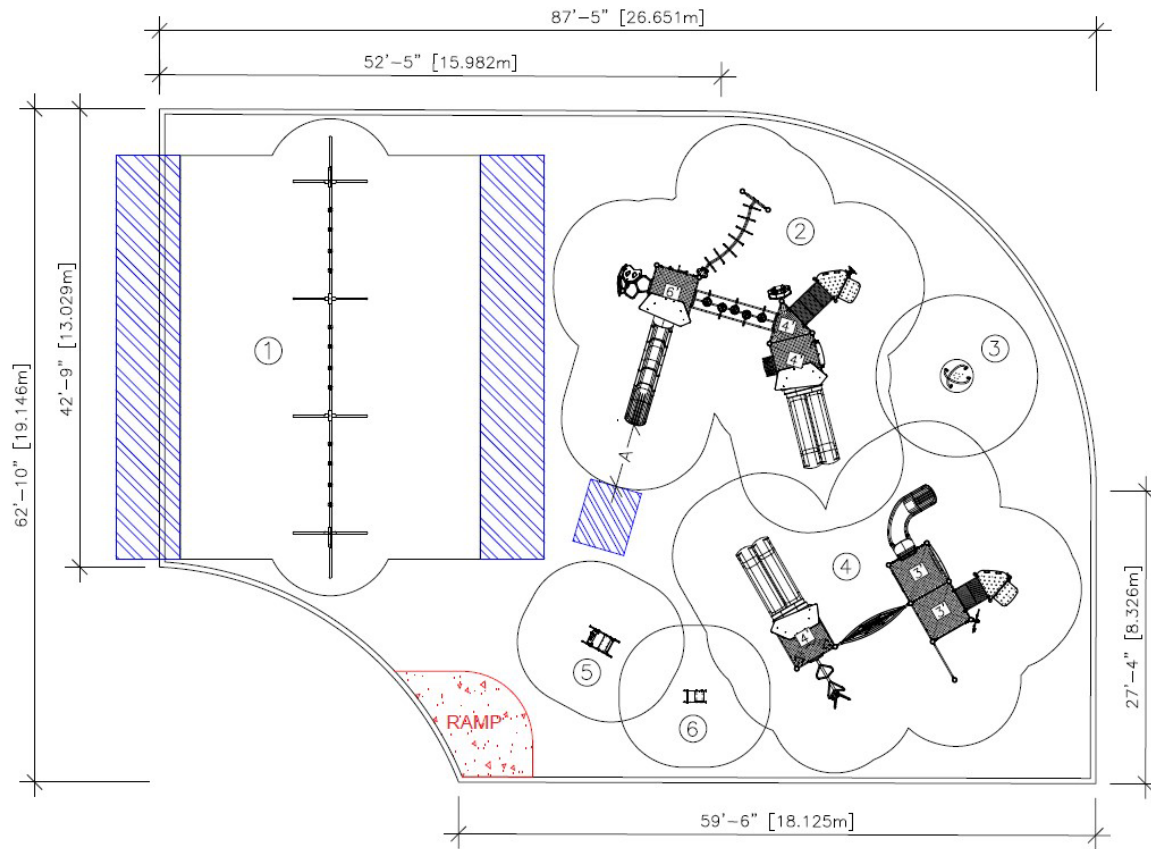
Spray Pad



Spray Pad

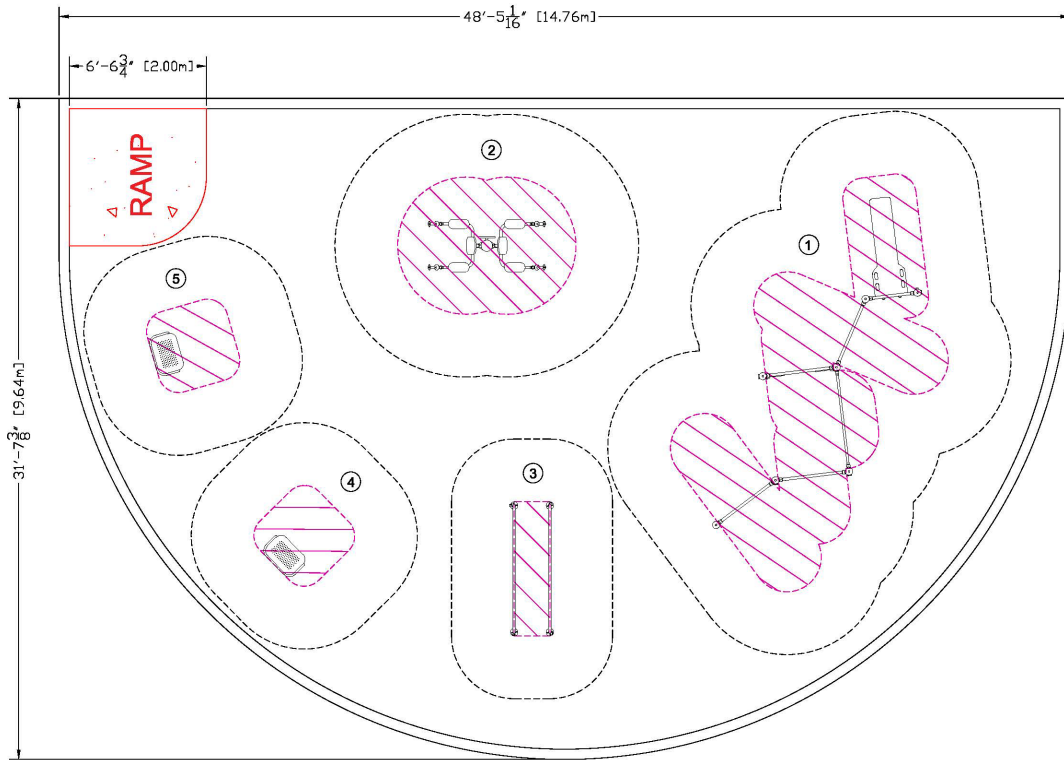


Playground



Fitness

3.1

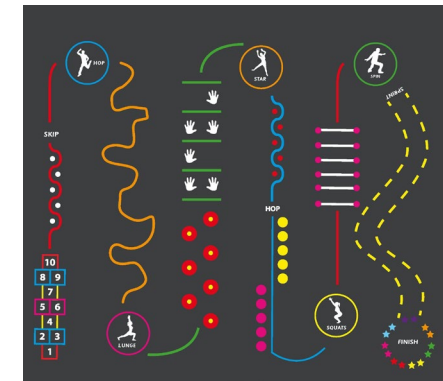
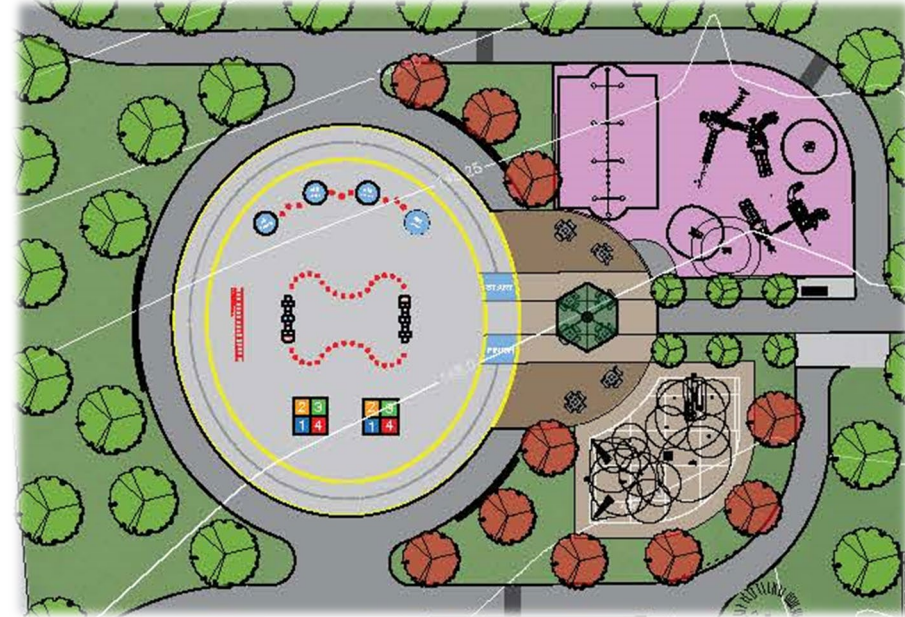


Skating Rink

Winter Use

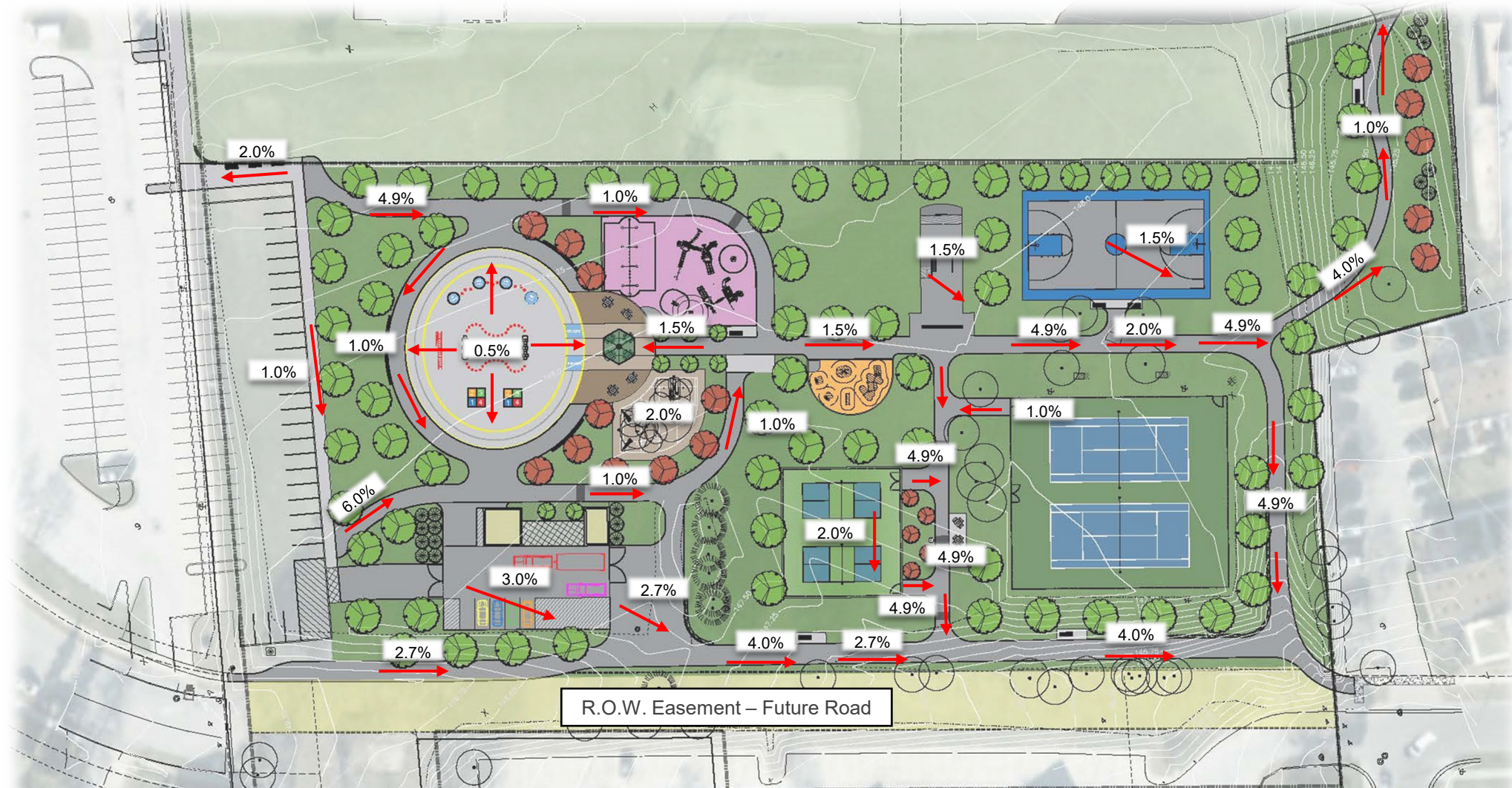


Creative Play Markings (Summer Use)

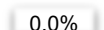


Walkway Slopes

3.1



Legend





-  Direction of Slope and Drainage
-  0.0% Walkway Slope

Site Circulation



R.O.W. Easement - Future Road

Legend

-  Pedestrian Walkways (3m Wide, Asphalt)
-  Vehicular Circulation (6m Wide, Asphalt)
-  Main Entrances
-  Accessible Seating & Rest Areas

Site Circulation

Flush Surfaces

- Curb ramps will be implemented where necessary.

Slopes

- Walkways slope between 1.0% to 4.9% with a 2% typical cross slope for optimal drainage. One pathway exceeds 5% however, an accessible connection into the site can be made through all other pathways. All walkways to be 3m wide.

Bench / Rest Locations

- Accessible benches and tables will be placed min. every 90m and at facility entrances.

Lighting

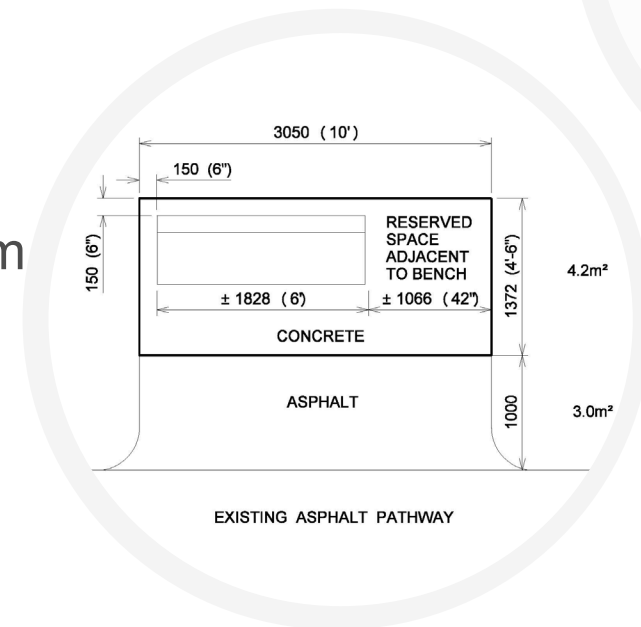
- Lighting elements will be placed along main walkways
- Ice rink and pickleball facilities will be lit
- Existing tennis court lighting to be replaced



Site Furnishings

- Accessible Gathering Tables
- Bench Pad Extensions
- Benches with Backs and Arm Rests
- Signage

Gulleden Park will exceed the FADS 20% minimum requirement of accessible tables on site.



Surface Materials

Asphalt Paving



Pedestrian walkways, parks yard, pickleball courts, and multiuse courts will be constructed with asphalt paving.

Wood Fibre Surfacing



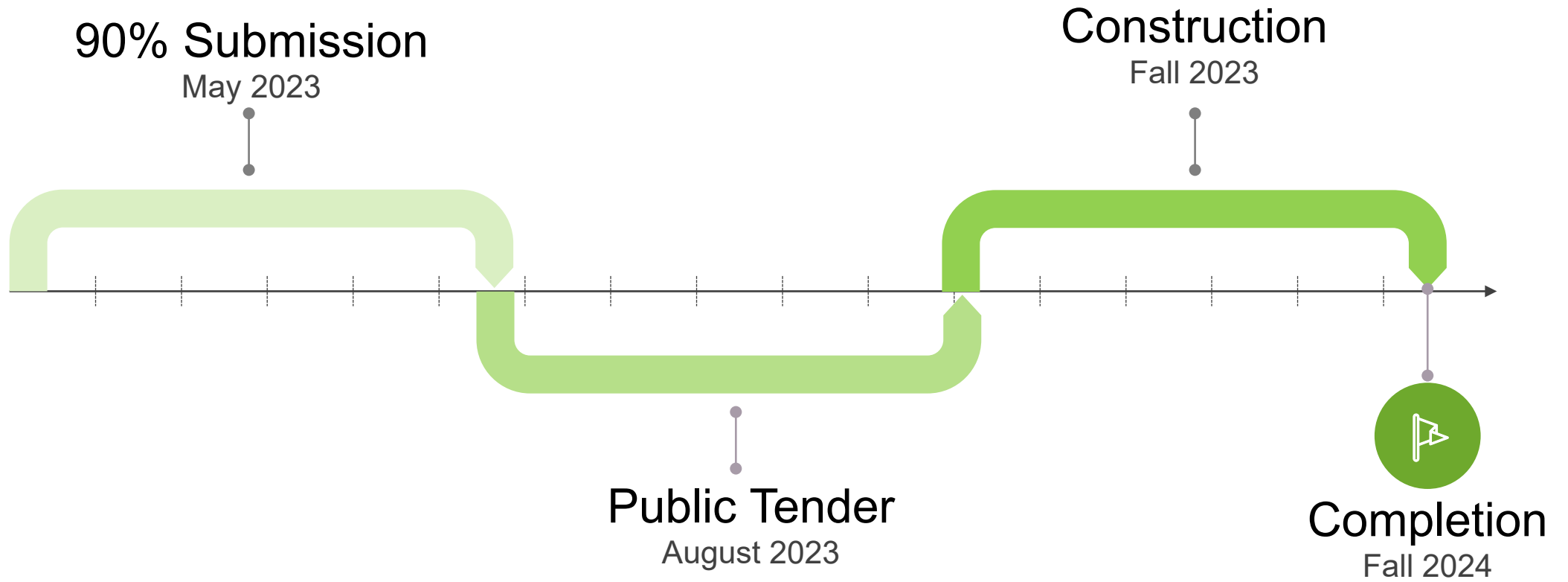
Playgrounds will be constructed with wood fibre surfacing.

Concrete Paving



Concrete paving will be utilized for the open plaza areas, splash pad, and site furnishing pads.

Project Timeline





Thank You

Questions?