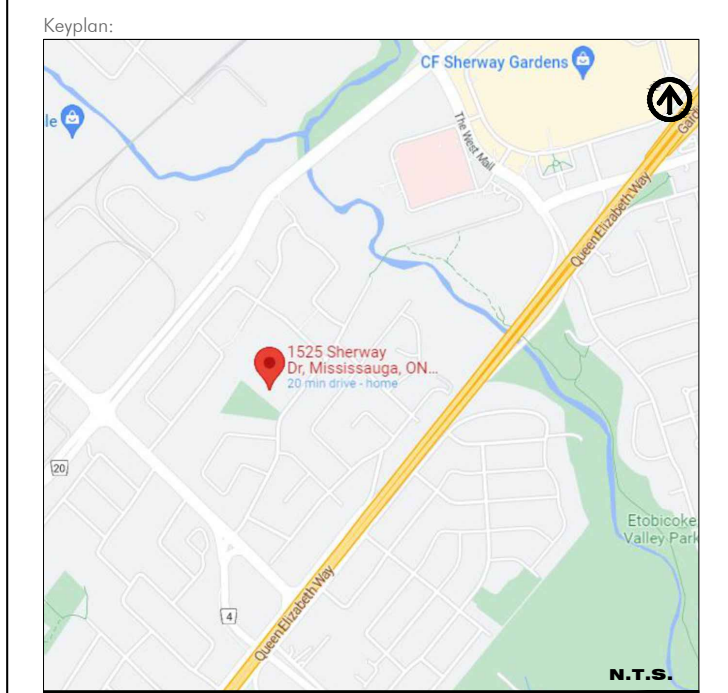


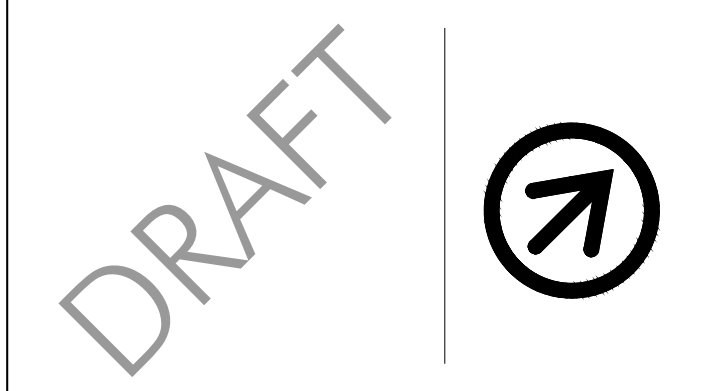
1 BASE PLAN  
PI 1:250



LEGEND:  
 --- SETBACK  
 --- MAIN BUILDING 12m OFFSET

No.	Date (D/M/Y)	Issue	By
1	08/05/23	REVISED PER COMMENTS	YY

**POPOVICH**  
 ASSOCIATES  
 1 Robert Speck Parkway, Suite 100  
 Mississauga, Ontario L4Z 3M3  
 T. 905.270.2229 F. 905.270.2190  
 info@popovich.ca

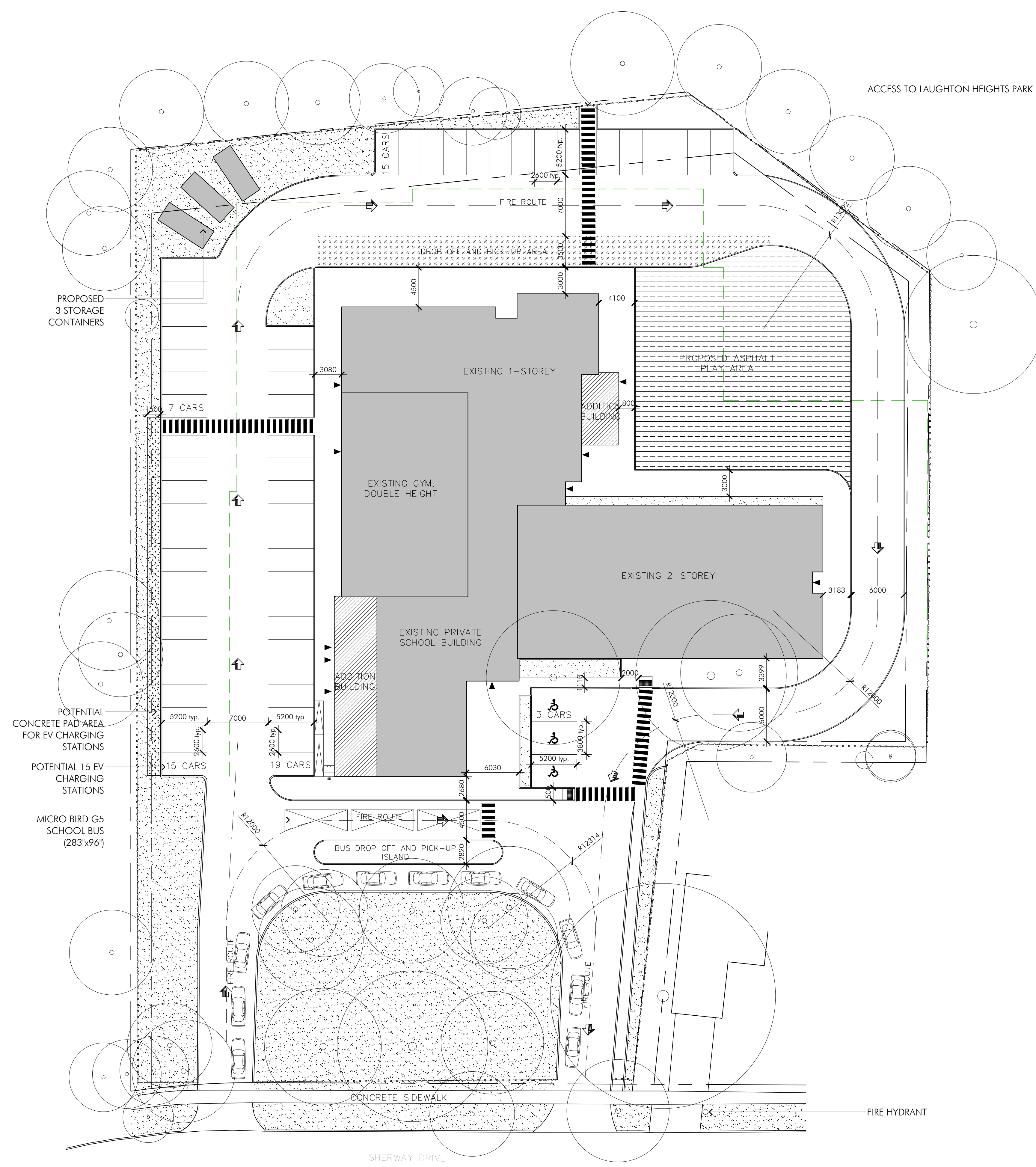


The contractor will check and verify all dimensions and job conditions on the site and report any discrepancies to the Landscape Architect prior to the commencement of construction.  
 This drawing must not be used for construction purposes until signed by the Landscape Architect.  
 All drawings are the property of the Landscape Architect and may not be copied, reproduced or altered without written permission from the Landscape Architect.  
 DO NOT SCALE DRAWING

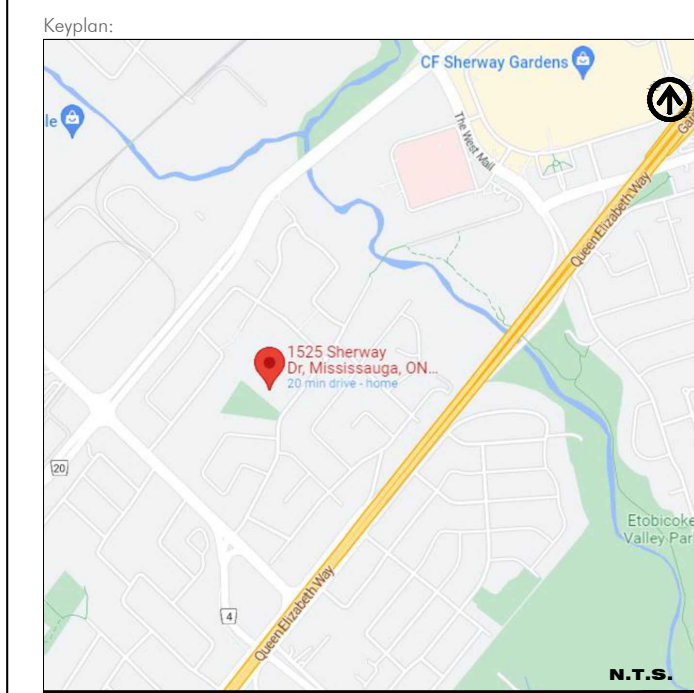
Project Info:  
 1525 SHERWAY DRIVE, MISSISSAUGA, ON  
 Owner Info:  
**ISNA ELEMENTARY SCHOOL**

1525 SHERWAY DRIVE, MISSISSAUGA, ON  
 Sheet Title:  
**BASE PLAN**  
**EXISTING CONDITION**

Project Number: 1631  
 Drawn By: YY  
 Checked By: SP  
 Date: FEB 2023  
 Scale: AS NOTED  
 Sheet Number: **P1**



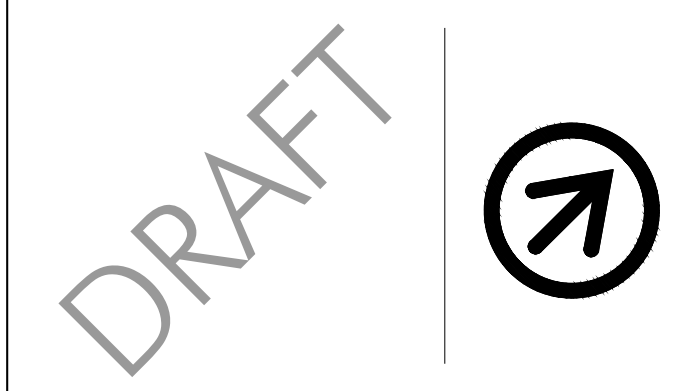
**NOTES:**  
 TOTAL PARKING REQUIRED FOR EXISTING + PROPOSED = 24 SPACES (PER CITY BYLAW)  
 TOTAL PARKING PROVIDED FOR EXISTING + PROPOSED = 59 SPACES (TOTAL)  
 INCLUDING: 3 ACCESSIBLE PARKING SPACES  
 ROUGH IN FOR: 15 EV CHARGING STATIONS



- LEGEND:**
- MAIN BUILDING 12m OFFSET
  - [Stippled Area] LANDSCAPE AREA
  - (Circle) EXISTING TREES

No.	Date (DD/MM/YY)	Issue	By
4	05/05/23	REVISED PER COMMENTS	YY
3	02/05/23	ISSUED FOR REVIEW	YY
2	24/04/23	ISSUED FOR REVIEW	SX
1	16/03/23	ISSUED FOR REVIEW	YY

**POPOVICH ASSOCIATES**  
 1 Robert Speck Parkway, Suite 100  
 Mississauga, Ontario L4Z 3M3  
 T. 905.270.2229 F. 905.270.2190  
 info@popovich.ca



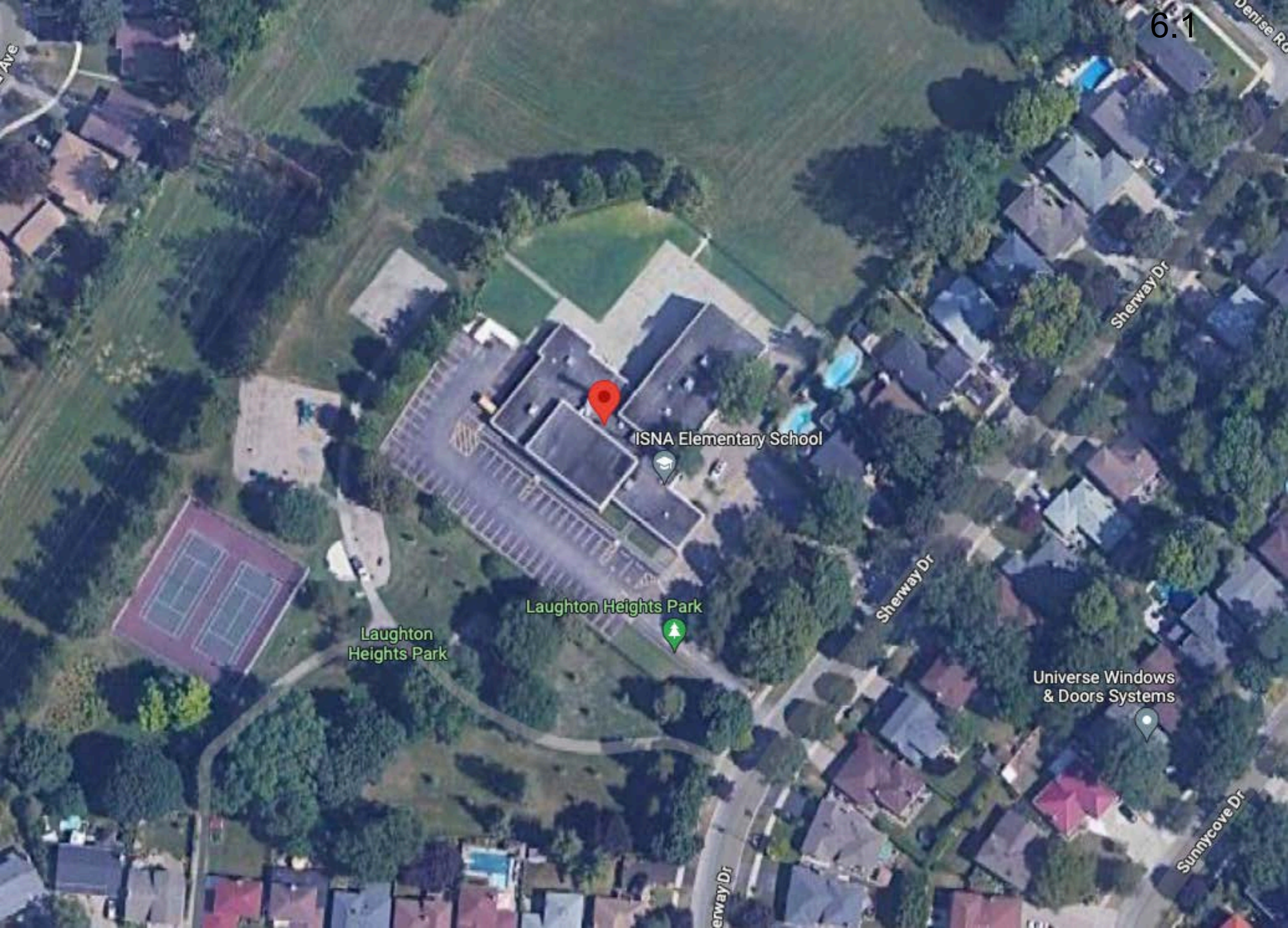
The contractor will check and verify all dimensions and job conditions on the site and report any discrepancies to the Landscape Architect prior to the commencement of construction. This drawing must not be used for construction purposes until signed by the Landscape Architect. All drawings are the property of the Landscape Architect and may not be copied, reproduced or altered without written permission from the Landscape Architect. DO NOT SCALE DRAWING.

Project Info:  
 1525 SHERWAY DRIVE, MISSISSAUGA, ON  
 Owner Info:  
**ISNA ELEMENTARY SCHOOL**

1525 SHERWAY DRIVE, MISSISSAUGA, ON  
 Sheet Title:  
**CONCEPTUAL SITE PLAN**

Project Number: 1631 Sheet Number:  
 Drawn By: YY  
 Checked By: SP  
 Date: FEB 2023  
 Scale: AS NOTED





ISNA Elementary School

Laughton Heights Park

Laughton Heights Park

Universe Windows & Doors Systems

Sherway Dr

Sherway Dr

Sunnycove Dr

erway Dr

Ave

Denise Rd