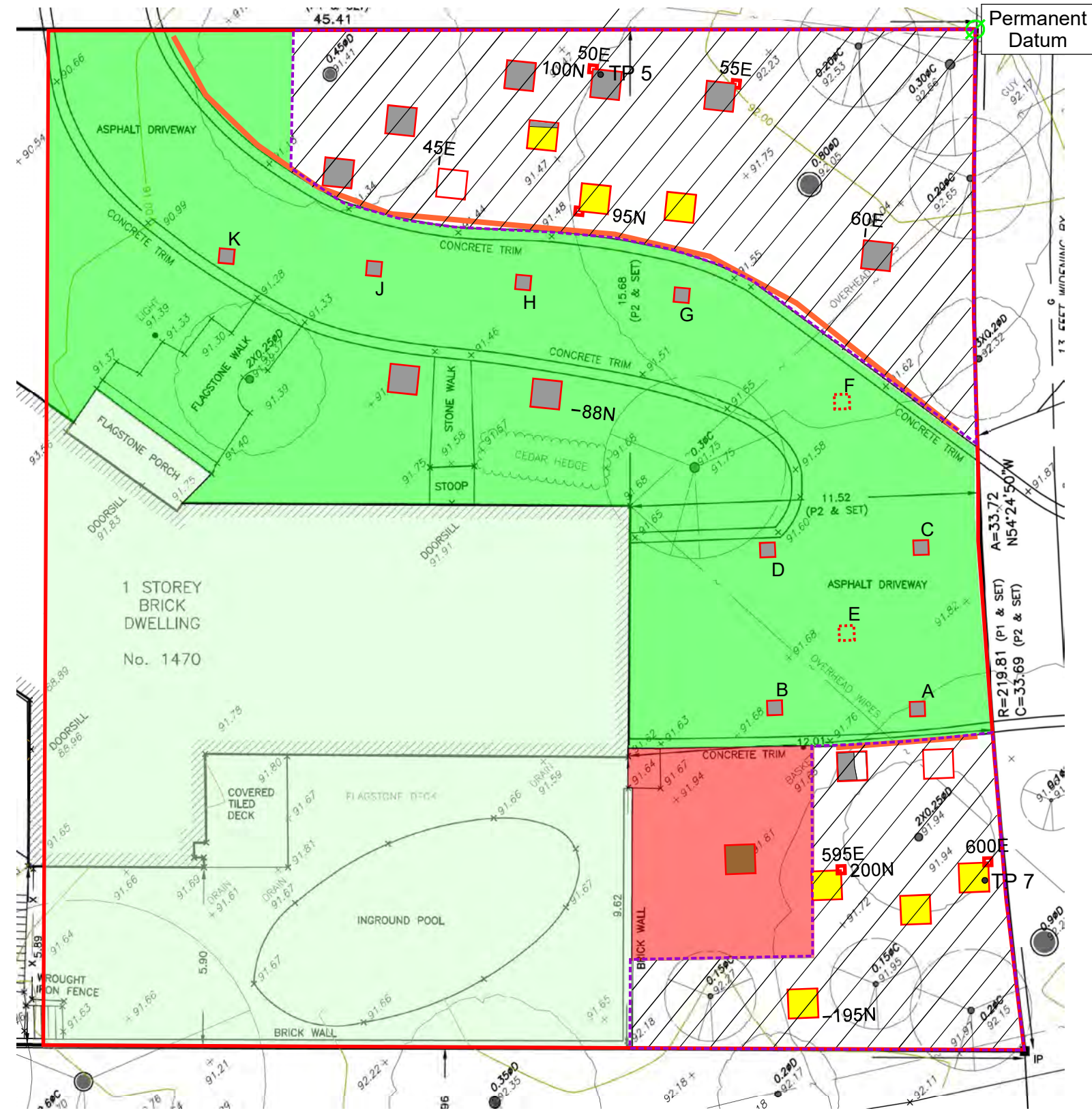


KEY

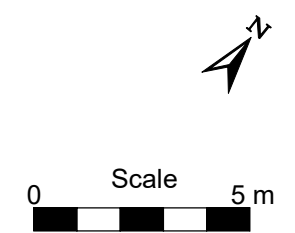
- Test Unit with "A" Horizon and Sufficient Artifact Counts to Require Stage 4 Hand Excavation
- Test Unit with "A" Horizon and Insufficient Artifact Counts to Require Stage 4 Hand Excavation
- Test Unit with Fills over Stripped Soil
- Test Unit with Fill below the Expected Level of Subsoil
- Unexcavated Driveway Test Unit (see text)
- Archaeological Potential Remains within Building Envelope, Stage 4 Hand Excavation of 1 x 1 m Units Recommended
- Archaeological Site AjGv-4 to be Protected, Designation under Part IV of the Ontario Heritage Act Recommended
- Stage 3 Demolition Monitoring, Nothing Found, No Further Archaeological Work Required
- Stage 3 Testing Completed, Stripped to Subsoil, Nothing Found, Avoidance of Adjacent Protected Archaeological Site Required



KEY

- Stage 3 Study Area
- Grid Stake
- TP # Positive Stage 2 shovel test pit
- GPS Point
- Hoarding

Date: 30/11/22
Designer: JM



1470 PINETREE CRESCENT, MISSISSAUGA
Archaeological Stages 1-3: Background Study, Assessment, Monitoring & Testing of AjGv-4
Supplementary Figure 8: Recommendations from Stage 3