

# Improving Equity and Engagement in School Travel Planning

*Reviewing Our "Five E's" Framework*

Sabat Ismail & Charlotte Estey



# Overview

- Equity in School Travel Planning (STP)
- Review of our STP Framework
- Framework revisions and recommendations for STP practitioners and other stakeholders



# What is School Travel Planning?



## School Travel Planning

A program of [Green Communities Canada](#) that is a community-based model for implementing active school travel, that systematically addresses barriers to and incentivizes walking to school.

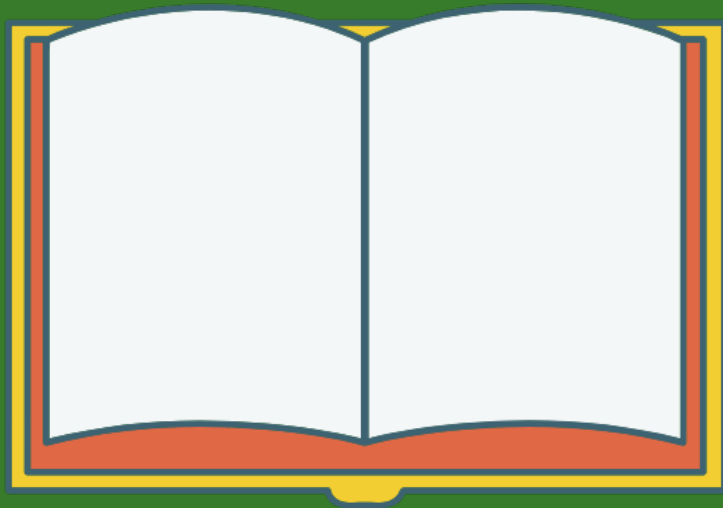
The original "Five E's" Framework:

- Education
- Encouragement
- Engineering
- Evaluation
- Enforcement

# Why review our framework?

- Increasing police violence against Black individuals and communities (Summer 2020)
  - Safe Routes Partnership (US-based organization) revised their Safe Routes to School framework
- Facilitator bias and false assumptions; ignorance to existing inequities





## Two Guiding Questions

1. Should we remove enforcement from our "Five E's" framework?
2. How can we make our framework anti-oppressive and more equitable?



## Findings

# Use of Traditional Enforcement

- Effectiveness of traffic enforcement
- Impact of police presence in school zones
- Alternatives to traditional enforcement

# How to Practice Engagement

- Building relationships takes time
- Reduce barriers to participation
- Address transport inequities
- Involve children and youth





# Revisions to our Framework

- Enforcement now optional
  - Community engagement integral to this decision
- Equity and engagement are added
  - Community engagement integral to all decisions in the Five E's
  - Equity overarches everything



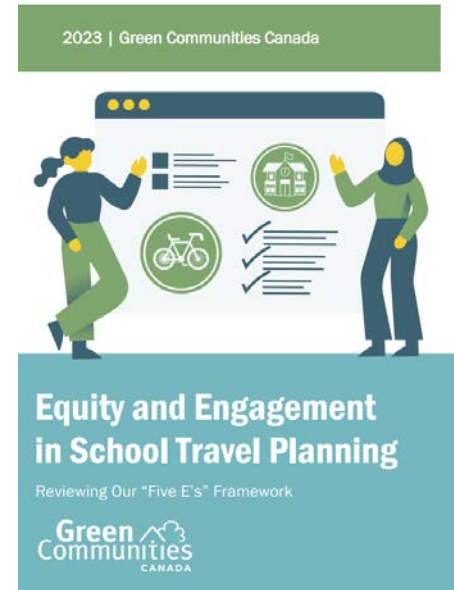
# Recommendations

Phase of STP	Examples of ways to apply equity and engagement
Phase 1a: Set-up at Regional Level	<p><i>Establish regional STP Committee</i></p> <ul style="list-style-type: none"> <li>Recruit members that are representative of the diversity of the communities of participating schools; refer to the Revised Stakeholder Diagram.</li> <li>Provide diversity, equity, and inclusion training for all committee members that includes information on transportation equity.</li> </ul> <p><i>Hire STP <u>facilitators</u></i></p> <ul style="list-style-type: none"> <li>Hire facilitators whose racial and cultural backgrounds reflect the diversity of the communities they will be working with.</li> <li>Consider equity during the hiring processes for facilitators and other program staff.</li> <li>Strive for adequate financing that covers not just facilitator staff time but also supports participating school communities (e.g., honoraria for participants, funding to cover some AST activities at schools).<sup>i</sup></li> <li>Provide diversity, equity, and inclusion training for new and continuing facilitators, including information on transportation equity.</li> </ul> <p><i>Build support for <u>AST</u></i></p> <ul style="list-style-type: none"> <li>Consider transportation equity when reviewing and developing policies, procedures, and practices that support AST.</li> <li>Seek and reflect upon learnings around equity and engagement from STP facilitators.</li> <li>Report measures of equity and equitable engagement when documenting work to date.</li> </ul>
Phase 1b: Set-up at School Level	<p><i>Select potential <u>schools</u></i></p> <ul style="list-style-type: none"> <li>Prioritize schools in neighbourhoods with weaker networks of active transportation infrastructure, especially those with higher concentrations of low-income families and a sizeable proportion of racialized/marginalized families.</li> <li>Minimize the number of schools per facilitator to maximize resources per school, as higher needs schools may also be more challenging and require more time to engage in STP.</li> </ul> <p><i>Complete School Agreement</i></p>



## NEW SCHOOL TRAVEL PLANNING FRAMEWORK PRIORITIZES EQUITABLE ENGAGEMENT

by Xuedan Xu | Apr 3, 2023 | Transportation | 0 comments



Read the [summary blog](#)  
and find [the report](#) at  
[greencommunitiescanada.org](https://greencommunitiescanada.org)

School Travel Planning (STP), a community-based approach to increase rates of active travel to school, was brought to Toronto in the mid-1990s to address such concerns. Since then, Green Communities Canada (GCC) has been a major contributor to the growth of STP in Canada, piloting the model across four Canadian provinces between 2006 and 2009. By 2012, GCC worked alongside multiple partners to successfully introduce the program to over 120

**Questions?**

# Green Communities CANADA

# THANK YOU!

Please contact us with any questions .

**Charlotte Estey**

School Travel Planner at GCC

[cestey@greencommunitiescanada.org](mailto:cestey@greencommunitiescanada.org)

**Sabat Ismail**

School Travel Planner at GCC

[sismail@greencommunitiescanada.org](mailto:sismail@greencommunitiescanada.org)

