

Paramount Fine Foods Centre Rehabilitation

Accessibility Presentation

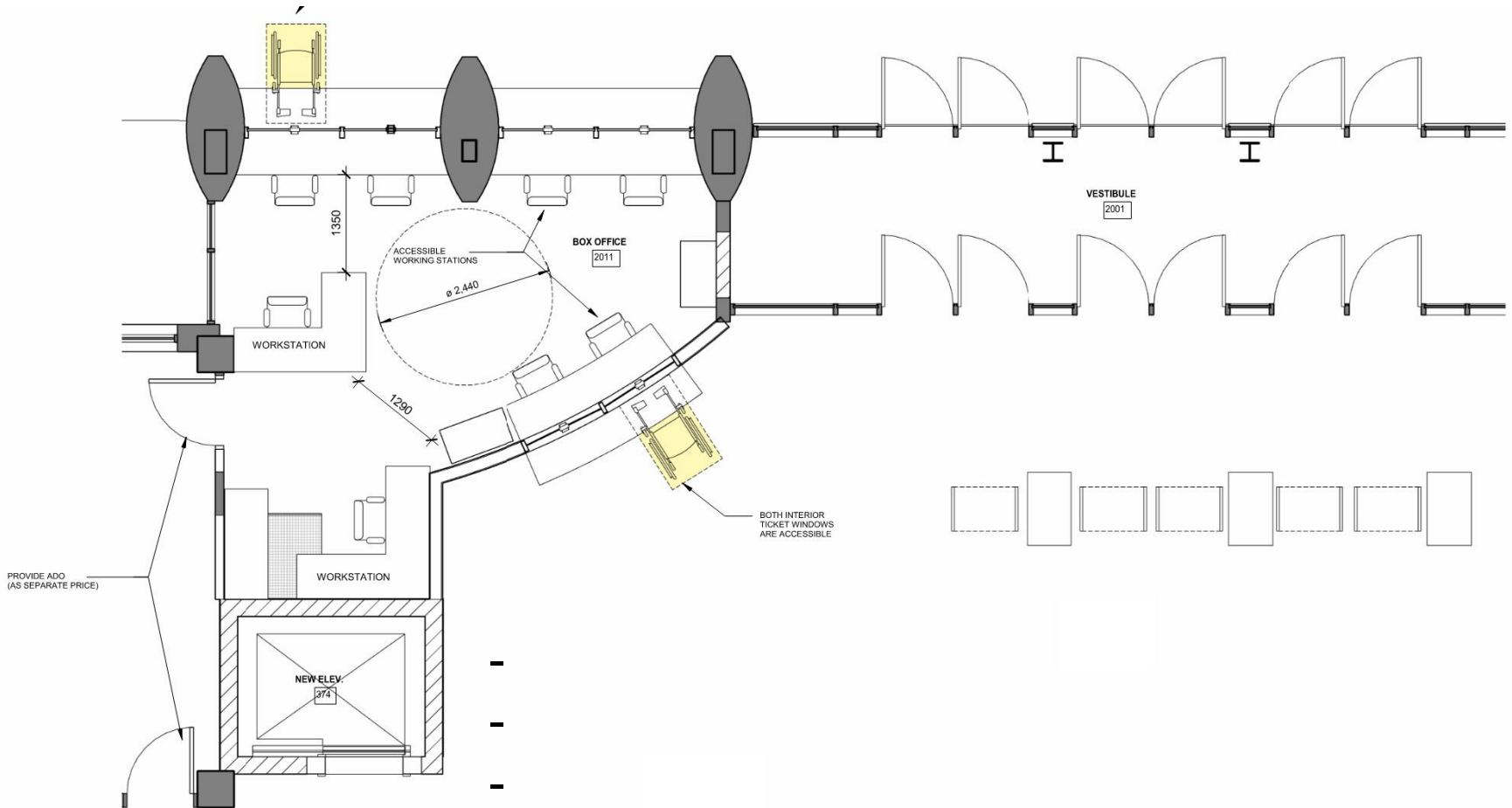
June 26, 2023





- Five (5) existing interior ticket windows, with only one (1) accessible window
- One (1) window within vestibule currently not in use

BOX OFFICE TICKET WINDOWS

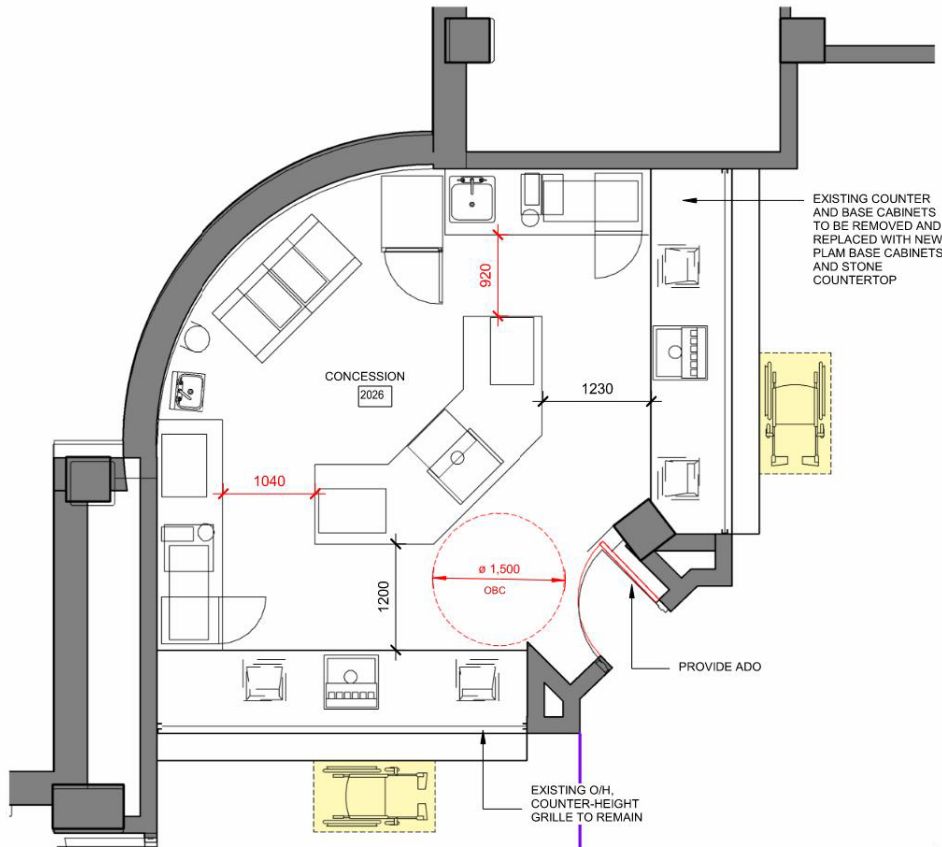


EXISTING CONCOURSE CONCESSIONS

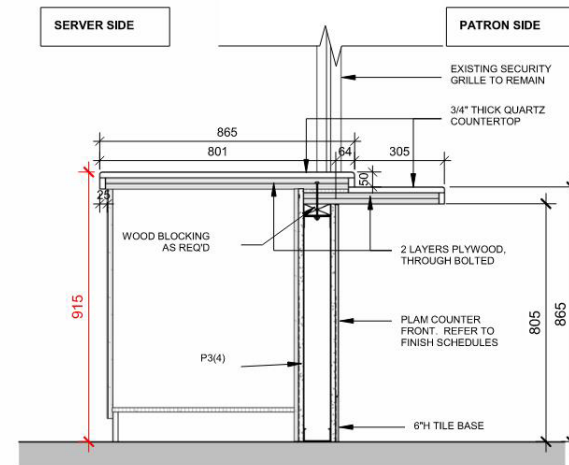


CONCOURSE CONCESSION COUNTERS

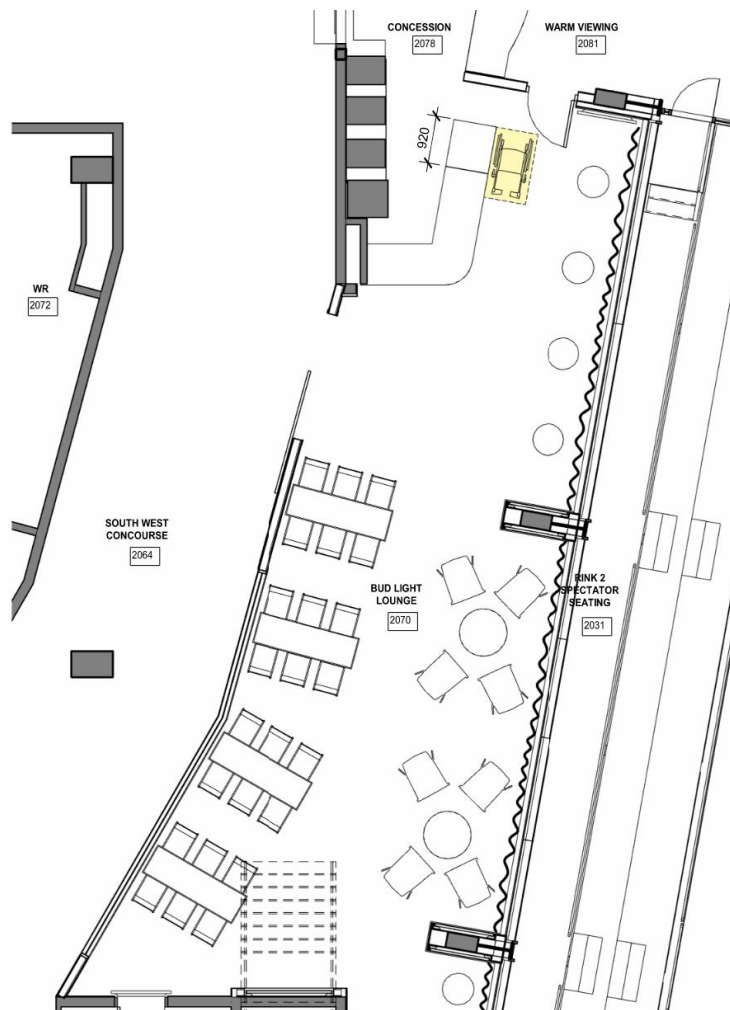
NOTE:
AT CONCESSION ONE ONLY REPLACE BASE CABINETS UNDER TRANSACTION COUNTERS, NEW COUNTERS AT 865mm HEIGHT, NEW SECURITY GRILLS AND PROVIDE ADO TO CONCESSION DOOR. THIS CONCESSION WILL BE EMPLOYEE ACCESSIBLE



- Eight (8) existing counters to be retrofitted with cabinet and counters.
- New counters lowered at front for accessibility (side approach)
- One (1) concession to be accessible on server side

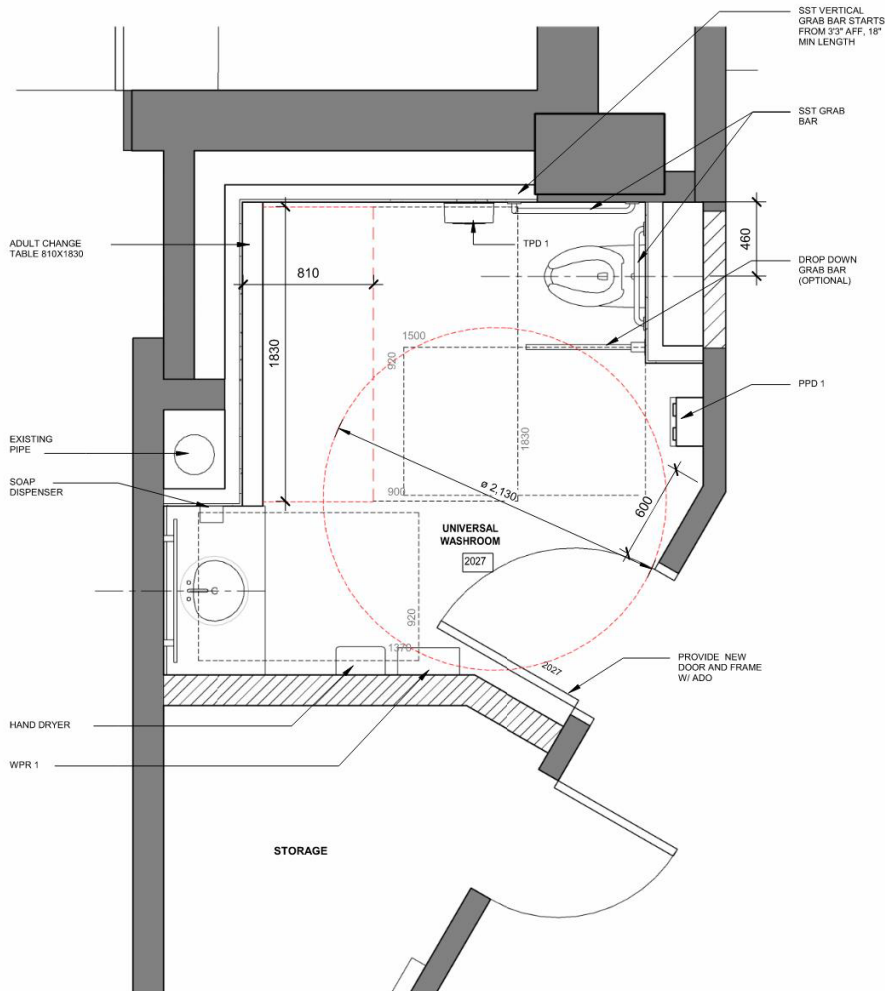


BUDLIGHT LOUNGE



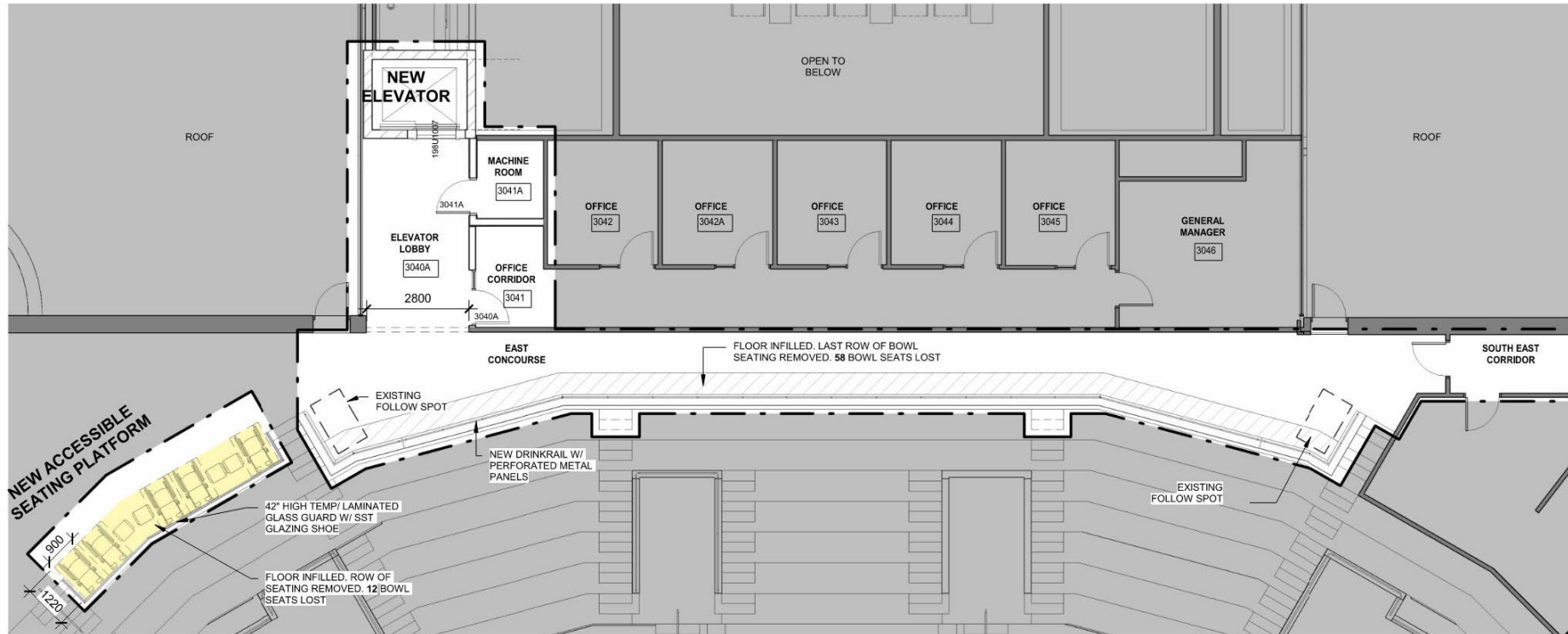
- Existing bar counter not accessible
- Portion of existing counter to be dropped to accessible height (side approach)

NEW UNIVERSAL WASHROOM - CONCOURSE



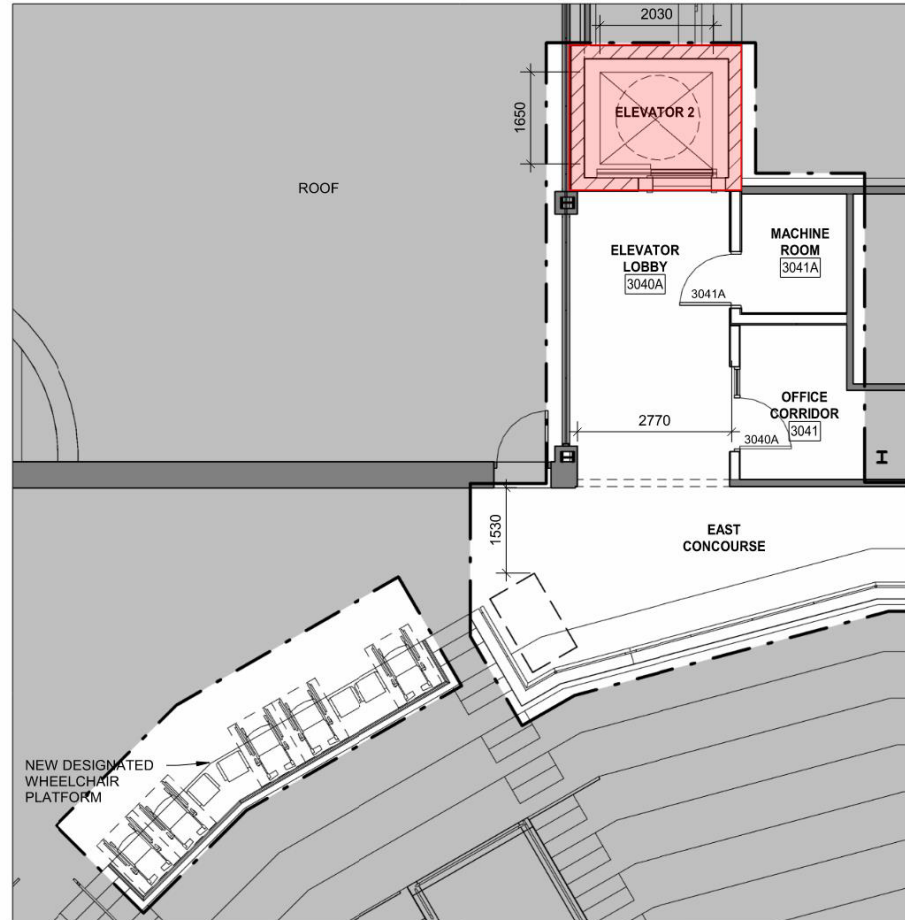
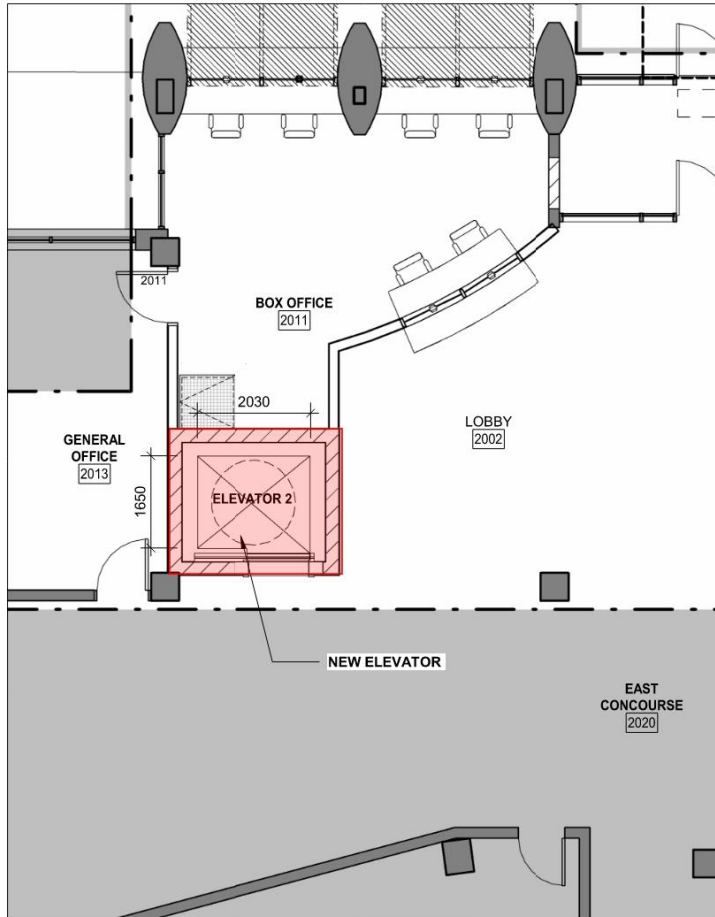
- Conversion of existing storage area into new Universal Washroom
- Retractable adult change table

NEW EAST STANDING AREA



- Existing access to second level is from back of house elevator
- New public elevator to access second level and new accessible seating platform

NEW ACCESSIBLE ELEVATOR

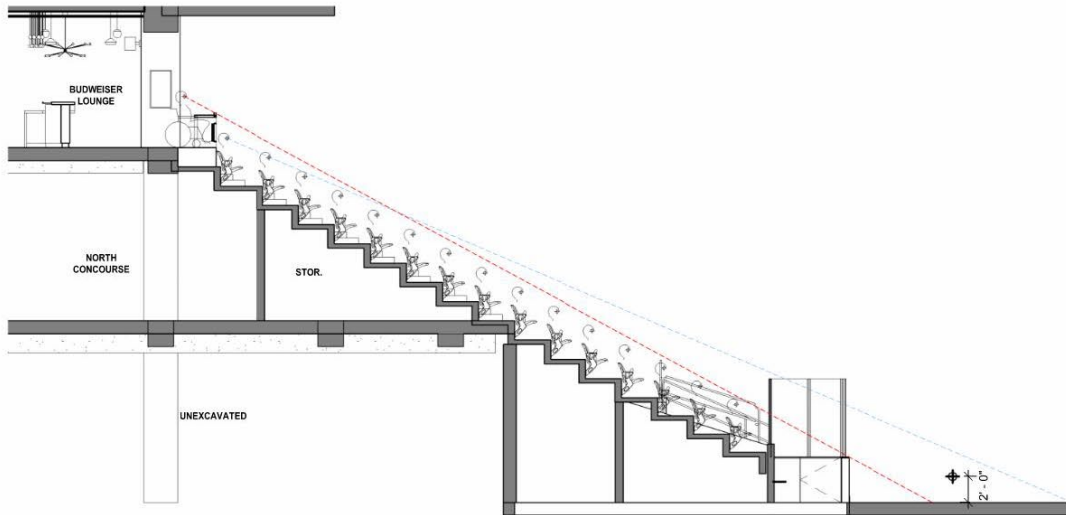
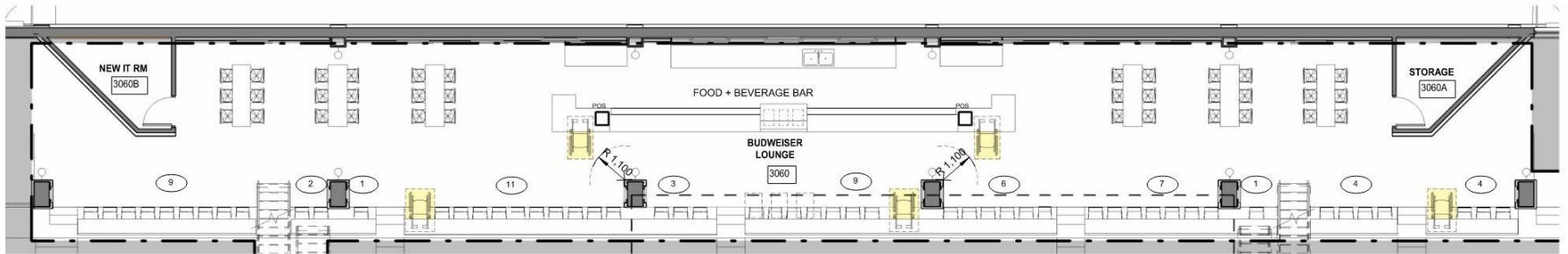


ELEVATOR AT LEVEL 2

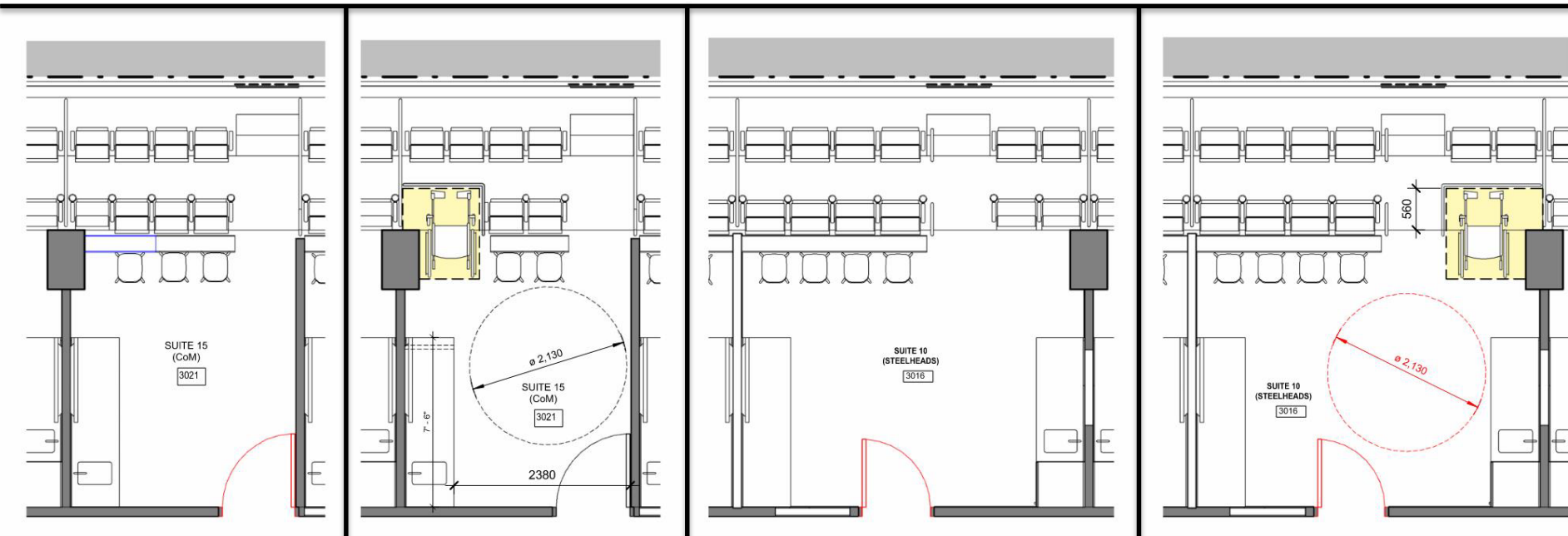
BUDWEISER CLUB LOUNGE - EXISTING



BUDWEISER CLUB LOUNGE



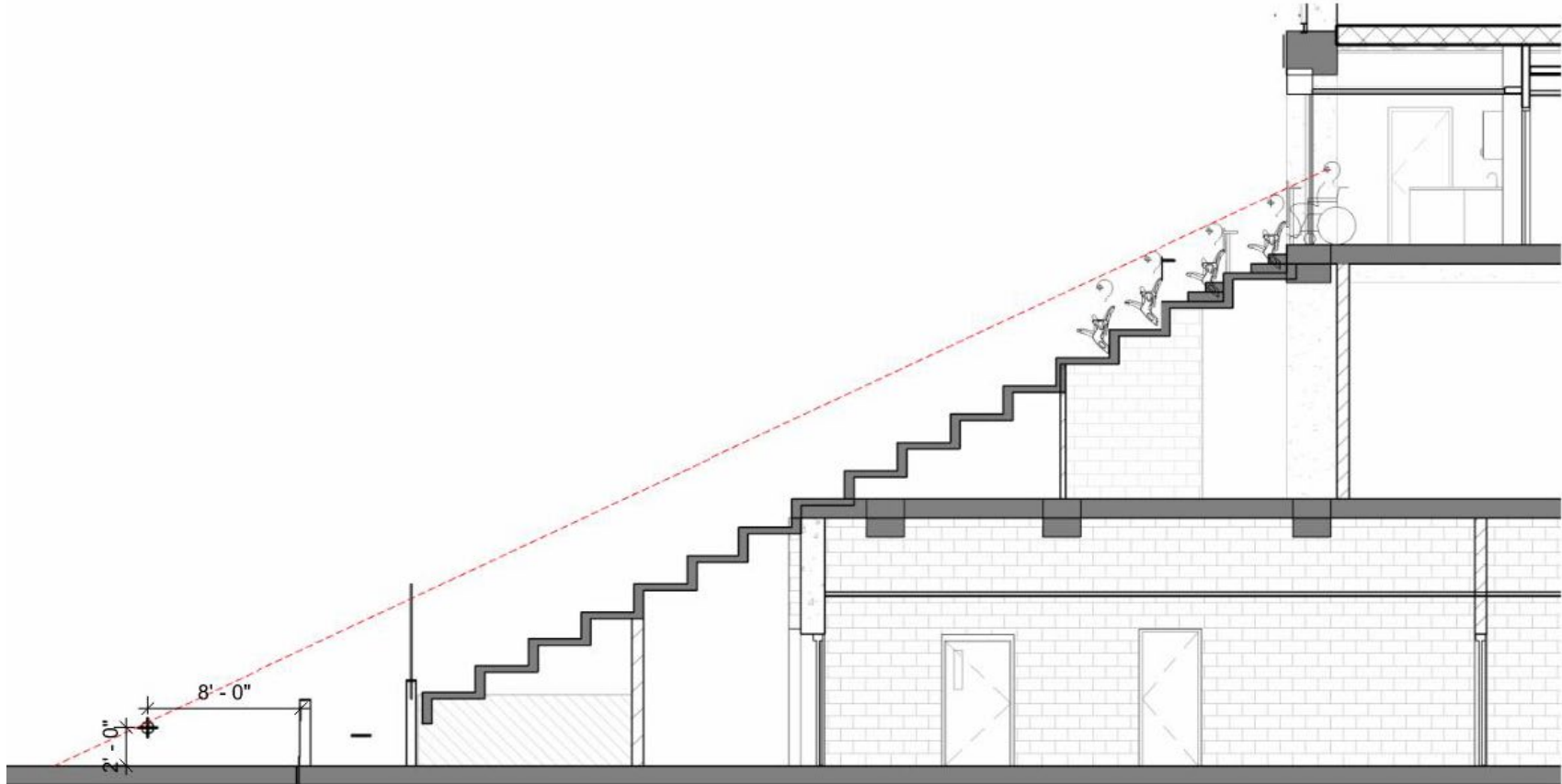
SUITES



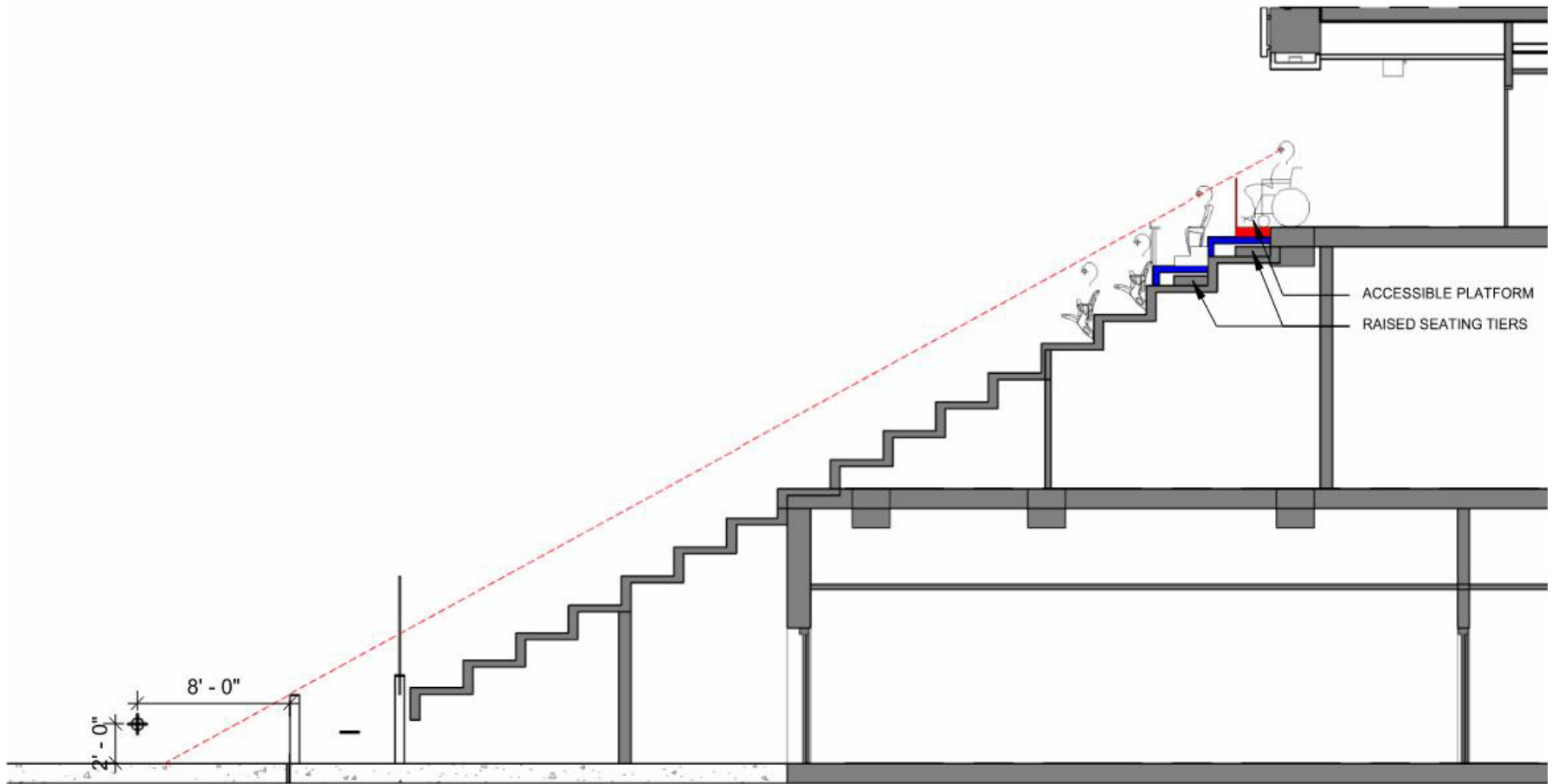
12-SEAT SUITE

- Reconfiguration of existing suites
- Removable accessible platform for each type of suite

SUITE - EXISTING SIGHTLINE



SUITE - NEW ACCESSIBLE SIGHTLINE



GROUP SUITE - EXISTING



GROUP SUITE - PROPOSED

