

School Zone Speed Limits

Traffic Services and Road Safety

School Zone Speed Limits

Current Condition

Local Roadways



- 30km/h in the school zone
- Community Safety Zone
- Automated Speed Enforcement
- 199 local school zone locations

Major Roadways



- Some 40km/h when flashing in the school zone
- 50km/h or 60 km/h other hours
- No Automated Speed Enforcement
- 30 major roadway school zone locations

Traffic Staff Review

Local Road School Zones:

Staff were requested to review the feasibility and impacts of time of day speed limits in school zones on local roadways.

- 30 km/h during school hours
- 40 km/h the rest of the day



Traffic Staff Review

Cost/Resource Impacts:

- More than 1,300 signing changes are required (25% of the total signing changes made through NASLP)
- \$575,000 is required to undertake this initiative
- Timeline is one year to complete as the work is coordinated with ASE deployments
- More than 200 by-law amendments and 400 utility locates are required

Local Road School Zones

Sign congestion:



Local Road School Zones

Vision Zero:

There is a **9 in 10 chance of survival** if hit by a vehicle travelling 30 km/hr or lower

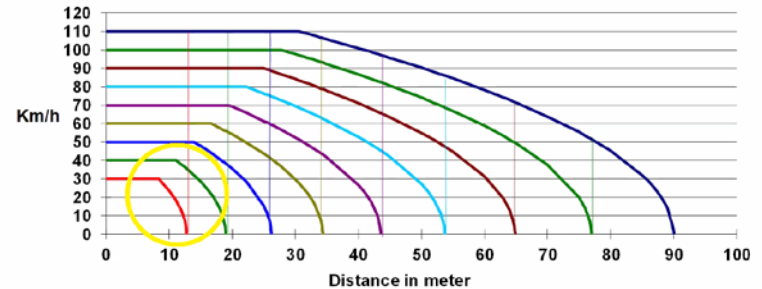


At 50 km/hr, the survival rate **drops to 1.5 in 10**



Stopping distance and collision speed

Fast reaction time 1 second and hard braking on dry asphalt

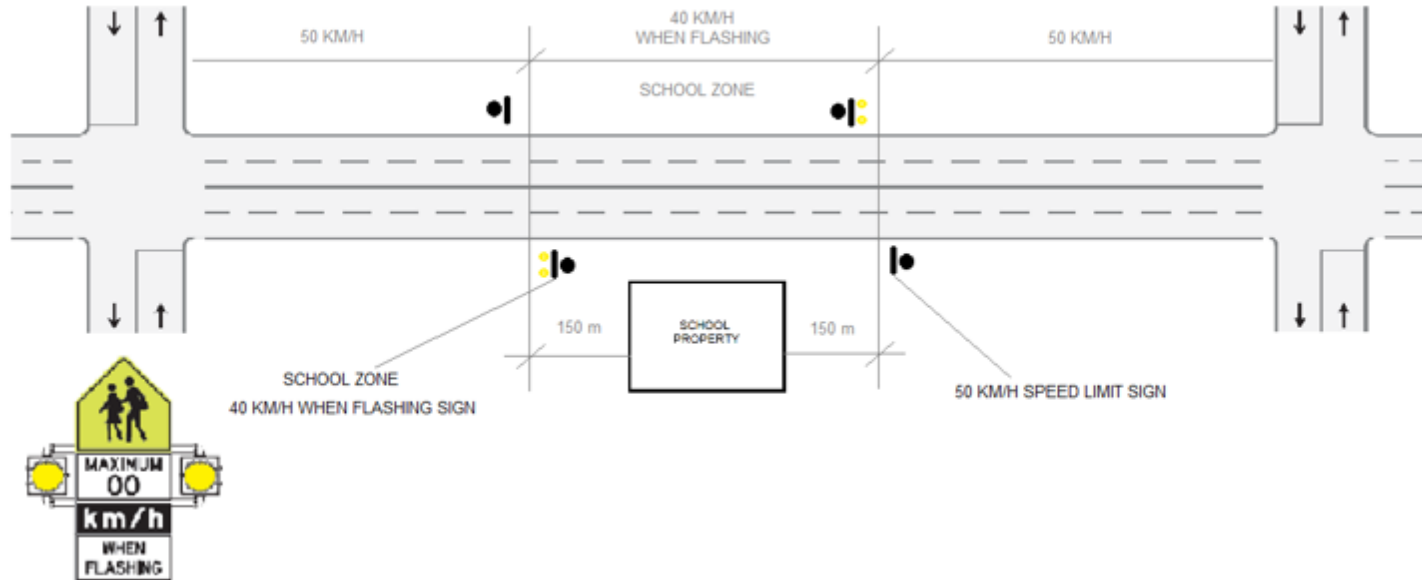


Traffic Staff Review

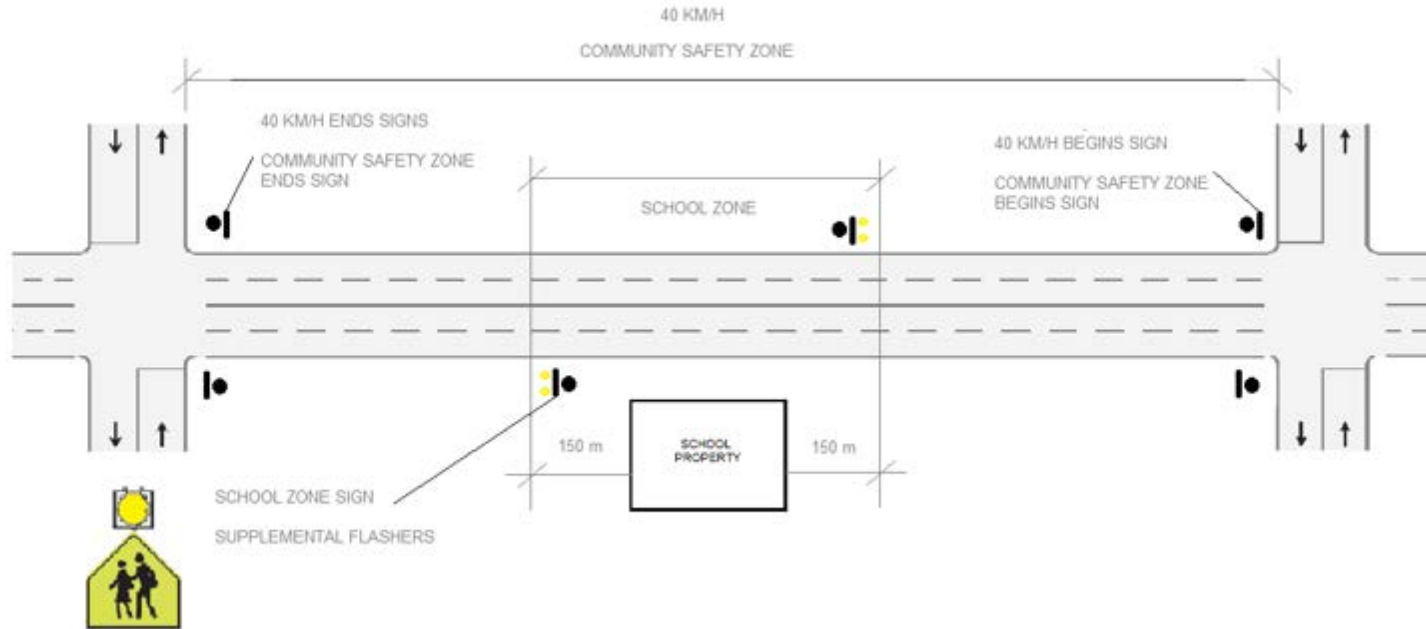
Major Road School Zones:

- Ability to deploy Automated Speed Enforcement
 - Provincial regulation prevents ASE in flashing 40 km/h
 - Maintain/repurpose flashing beacons
 - Consistency across the municipality
- Some funding required most of which can be accommodated in existing Capital Budget
- Would result in enhancement of 10 additional school zones with lower posted speeds and flashing beacons

Typical Major Road School Zone - Existing



Typical Major Road School Zone - Proposed



School Zone Speeds Limits

Local Road School Zones

Option 1	Option 2
Do Nothing	Change to school day speed limits
Neighbourhood school zones remain 30 km/h at all times	Neighbourhood school zones will have a speed limit of 30 km/h on school days, 40 km/h at all other times
Consistent with Vision Zero Principles	Not consistent with Vision Zero
No Cost	Additional budget of \$575,000 is required

Major Road School Zones

Option 1	Option 2
Do Nothing	Change to full time 40 km/h
School Zones on Major roads will remain ineligible for ASE	All School Zones will be eligible for ASE
Not consistent with Vision Zero	Consistent with Vision Zero Principles
No Cost	Additional budget of \$150,000 is required

School Zone Speeds Limits

DISCUSSION