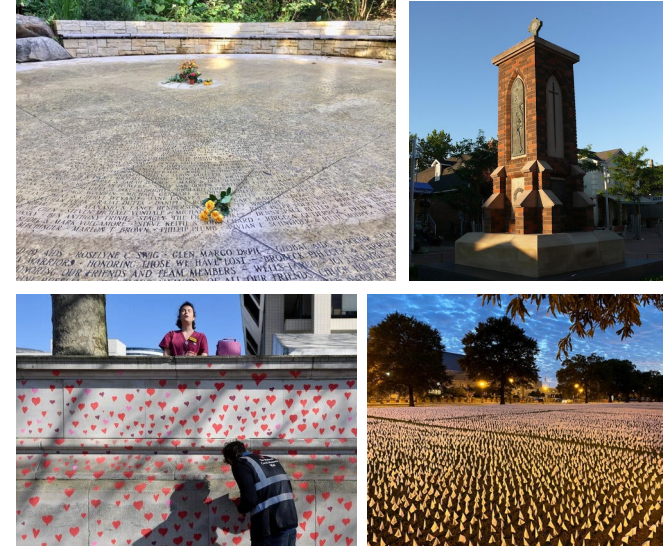


Vision Zero Memorial

Public Art Program, Parks & Culture Planning
Road Safety Committee – September 2023

Background

- The [Transportation Master Plan](#) and [Vision Zero Action Plan](#) recommend and allocate \$100,000 for a Vision Zero memorial for victims of fatal collisions in Mississauga
- The memorial will be designed and built by a professional artist or artist team. The commissioned artist(s) are expected to have experience and interest in working with community
- There will be an accompanying online memorial for people to remember their loved ones
- We are here today to present our shortlisted sites to locate the memorial and are seeking Committee feedback.



Site Selection Criteria

- Our criteria incorporates feedback provided by the Road Safety Committee and Accessibility Advisory Committee
- We have shortlisted 5 sites that we would like to run against this criteria, pending Road Safety Committee feedback
- The memorial will be located at the highest scoring site, pending final technical review
- We have provided a template for Committee members to offer feedback on the criteria and/or shortlisted sites

Criteria	Weight
Accessibility	20%
Integration	15%
Contextual Relevance	20%
Feasibility & Maintenance	15%
Community Support	30%

Aligns with the criteria detailed and approved by Mississauga City Council in the [City Acquired Art Policy](#) and [Public Art Master Plan](#)

Site Selection Criteria: Accessibility

- ❑ Physically and visually accessible to the public
- ❑ Central location; easily travelled to via multiple modes of transportation including, car, bike, walking and transit
- ❑ Near parking, micromobility parking, and bicycle racks
- ❑ Meets principles of universal accessibility; including wheelchair and walker accessible and ideally, situated near a service animal relief station
- ❑ Accessible in winter (receives winter maintenance)

Site Selection Criteria: Integration

- ❑ Memorial will not interfere with existing and proposed artwork, buildings, or structures in the vicinity
- ❑ Location has adequate space for seats (of differing heights) and can become a venue for community vigils
- ❑ Adequate space for interpretive panel(s), which present information related to education and prevention

Site Selection Criteria: Contextual Relevance

- ❑ Near one of the city's more highly trafficked roadways or near places of high traffic fatalities and accidents
- ❑ Location is suitable for the quality, scale, character and significance of this project; it is a place of respect and contemplation
- ❑ Natural shade and green space to ensure a calming environment for grieving visitors
- ❑ Optional but preferred: location is near the sound of flowing water

Site Selection Criteria: Feasibility & Maintenance

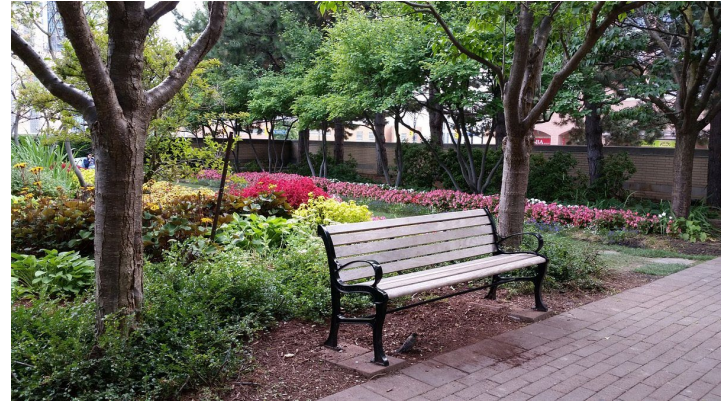
- ❑ City can easily coordinate future maintenance and conservation work by the artist and/or by an art conservator
- ❑ Parks Development and Parks Operations are supportive from a design and technical standpoint

Site Selection Criteria: Community Support

- Location is meaningful to and supported by members of the Road Safety Committee and community members affected by fatal collisions

Potential Site #1: Jubilee Garden

- 300 City Centre Dr
- Small park beside Mississauga Civic Centre and Celebration Square
- Gardens
- Central location, near parking
- Located on public transportation and active transportation routes
- Smaller available space, but surrounding walls give some privacy



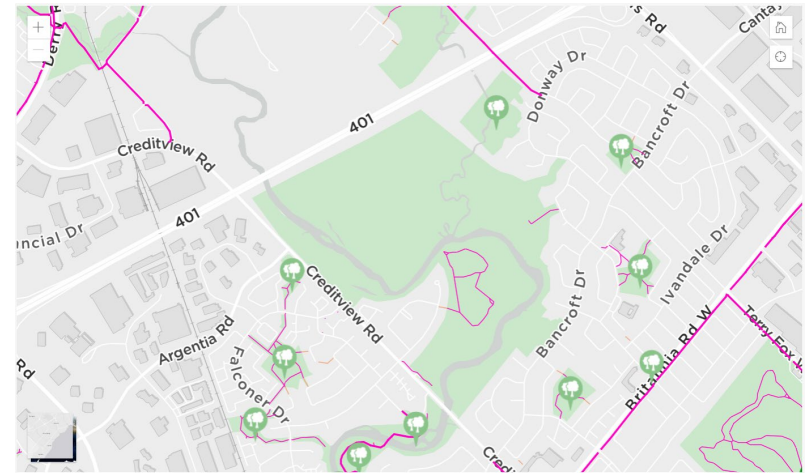
Potential Site #2: Dunn Park

- 4066 Erin Mills Pkwy
- Quiet, contemplative park with lots of forest and green space
- Parking
- Near a major roadway (Erin Mills Pkwy)
- Located on a public transportation route
- Accessible pathway
- Park is home to Mississauga's Millennium Grove, featuring over 70 species of trees native to Southern Ontario
- Unique local heritage; visitors can walk the former Dunn farm lane and see the foundation of the original Dunn house



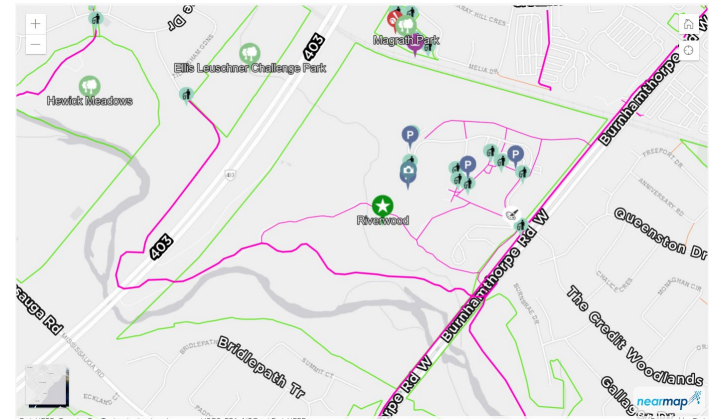
Potential Site #3: Credit Meadows Park

- 6545 Creditview Rd
- Riverside park with quiet, contemplative space
- Forests and green space
- Parking
- Accessible pathway
- Located near a public transportation route



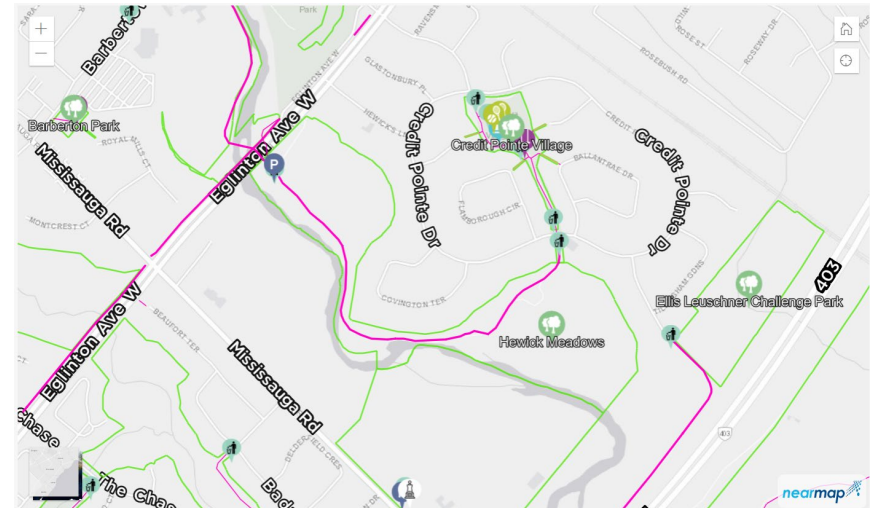
Potential Site #4: Riverwood

- 4190 Riverwood Park Lane
- Credit River on the park's western border
- 150-acre park and urban oasis with accessible trails and pathways
- Includes meadows, old-growth forest, ravines, wetlands, creeks and wildlife
- Located on an active transportation route and near public transportation
- Parking
- Over 160 bird species have been identified here
- Local heritage, including 1919 Chappell House, MacEwan Field Station, MacEwan Barn, MacEwan Terrace



Potential Site #5: Hewick Meadows

- 4420 Credit Pointe Dr
- Riverside, forested area and greenspace
- Near a major roadway (Eglinton Ave W)
- Located on a public transportation route
- Parking
- Accessible pathway



Summary & Open Discussion

We have provided a template for Committee members to offer feedback on the criteria and/or shortlisted sites

Shortlisted sites
1. Jubilee Garden
2. Dunn Park
3. Credit Meadows Park
4. Riverwood
5. Hewick Meadows

Criteria	Weight
Accessibility	20%
Integration	15%
Contextual Relevance	20%
Feasibility & Maintenance	15%
Community Support	30%

Want to discuss further?

Email: public.art@mississauga.ca

Phone: 416-669-4257

For more information about the City's public art program, visit:
mississauga.ca/publicart