

KEYPLAN

LEGEND

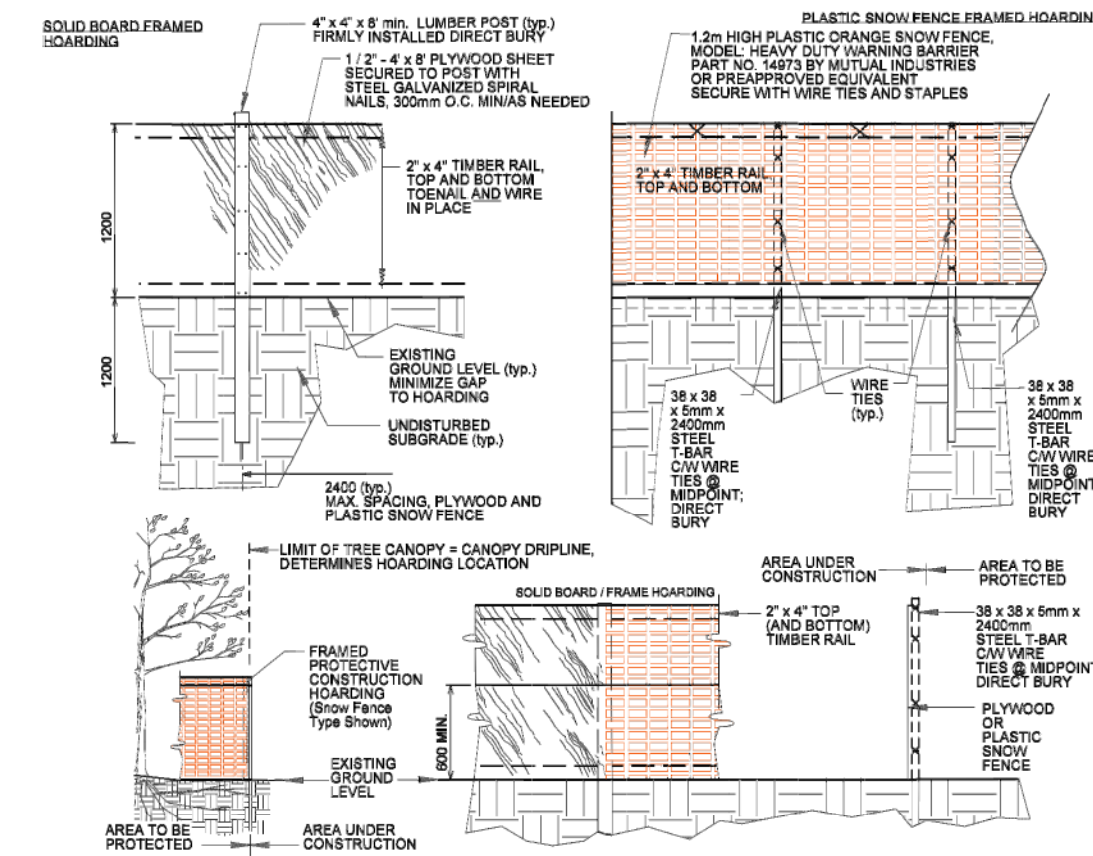
- EXISTING DECIDUOUS TREE (circle with dot)
EXISTING CONIFEROUS TREE (circle with star)
TREE NOT ON SURVEY (circle with cross)
TREE PROTECTION ZONE (circle)
TREE PROTECTION FENCING (dashed line)
TREE REMOVAL (red X)

0 2 5 10 1:200

02830-6

Hoarding Framed Protective Construction Hoarding
Solid Board Plastic Snow Fence

NOTE:
TO BE USED AS A GUIDELINE ONLY.
NOT TO SCALE. REMOVE CITY TITLE BLOCK
AND REDRAW TO REPRESENT SITE SPECIFIC
CONDITIONS. ALL TREE SPECIFIC CONDITIONS
ARE TO BE CONFIRMED BY THE PROJECT
CONSULTANT.



- 1. HOARDING LOCATION AS PER DRAWINGS. HOARDING INSTALLATIONS ARE TO INCLUDE WOVEN GEOTEXTILE FABRIC FOR EROSION CONTROL.
2. NO HOARDING OR CONSTRUCTION WORK TO OCCUR UNTIL HOARDING HAS BEEN INSPECTED AND APPROVED BY COMMUNITY SERVICES PROJECT MANAGER (CSPM). CONTRACTOR TO ARRANGE FOR A HOARDING INSPECTION WITH CSPM. 48 HOUR NOTICE REQUIRED.
3. HOARDING TO BE SUPPLIED, INSTALLED AND MAINTAINED BY THE CONTRACTOR THROUGHOUT ALL PHASES OF WORK ON SITE.
4. THE CONTRACTOR IS TO REMOVE AND DISPOSE THE HOARDING OFF SITE WHEN DIRECTED BY THE CSPM.
5. ALL WOOD PRODUCTS TO BE REFINISHED, UNLESS OTHERWISE SPECIFIED.
6. ALL WOOD PRODUCTS TO BE TREATED WITH AN ANTI-DECAY AND TERMITICIDE.
7. DO NOT ALLOW WATER TO COLLECT AND/OR POOL ON EITHER SIDE OF THE HOARDING.
8. PLACE HOARDING AT LIMIT OF TREE CANOPY OR UP TO 1.5 METERS AWAY FROM TRUNK OF TREE.
9. HOARDING TO BE SET ON CONCRETE BLOCKS TO BE SPACED TO ALLOW AIR AND WATER TO PASS THROUGH HOARDING.
10. FOR PROTECTION OF TREES AND ROOT SYSTEM, CONTRACTOR MAY BE REQUIRED TO PROVIDE WATERING, MULCHING, FERTILIZING, PRUNING OR OTHER TENDRANCE TO THE TREES.
11. ALL MEASUREMENTS IN MILLIMETRES UNLESS NOTED OTHERWISE (E.G. DIMENSIONAL LAMBER).
12. CONTRACTOR RESPONSIBLE FOR LOGS.

N.T.S.

Detail: 02830-6 ORIGINAL DATE: Mar 08/18
REVISION DATE: Mar 08/18



2 TREE PROTECTION

NTS

TREE INVENTORY

Table with columns: TREE #, Species, Botanical Name, DBH (cm), TPZ (m), Category, Condition, Rating, Comments, Action. Lists 60 trees with detailed notes on their status and protection requirements.

Table with columns: TREE #, Species, Botanical Name, DBH (cm), TPZ (m), Category, Condition, Rating, Comments, Action. Lists 33 trees with detailed notes on their status and protection requirements.

NOTES

Table with columns: No., Date, Description, Revisions. Includes revision history for the plan.

JSW+ associates CONSULTING ENGINEERS LANDSCAPE ARCHITECTS. Contact info: Tel: (905)889-8100 Fax: (905)889-6616

2230 MISSISSAUGA RD. TREE PRESERVATION PLAN. Scale: AS SHOWN. Drawn: MG. Date: JULY 2021. JSW+ Job No. 2122. Drawing No. TP.1