

Capital Design and Construction

Facilities & Property Management

The Capital Team Meeting/Heritage Buildings
September 2023



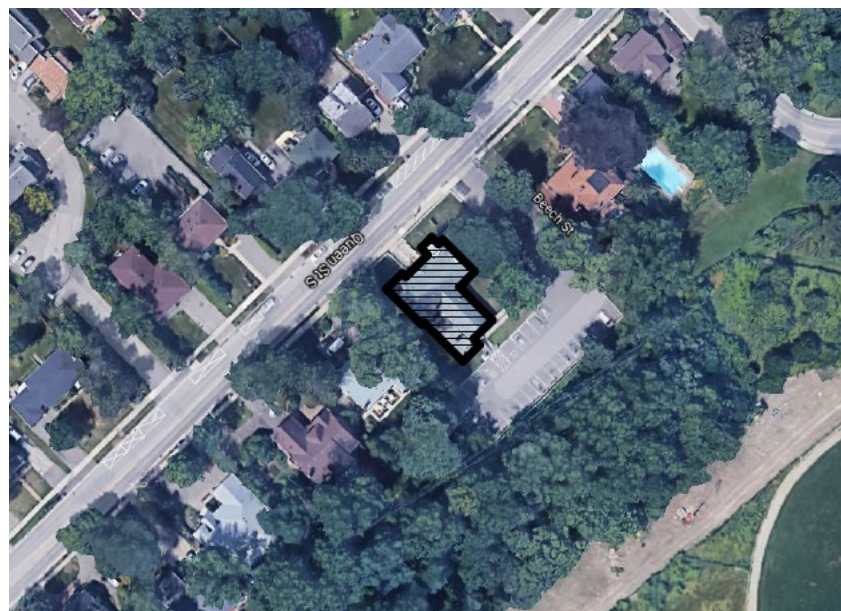
Streetsville Kinsmen Hall

327 Queen Street South, Mississauga, ON.

- Phase I; Accessibility Improvement (Completed)
- Phase II; Facility Upgrades



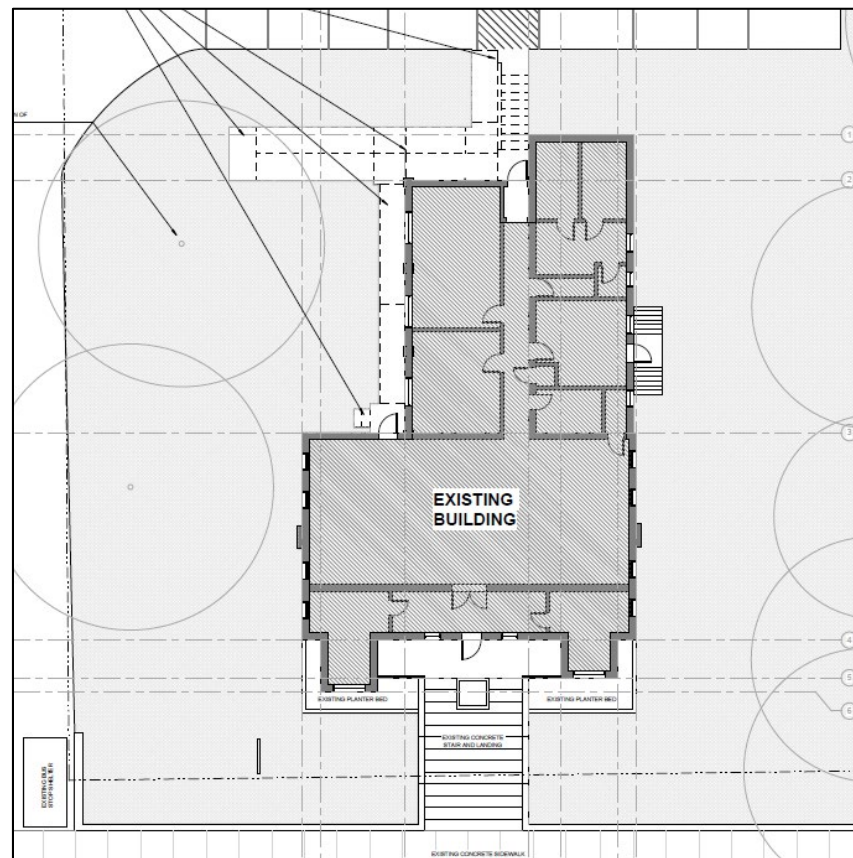
West Elevation



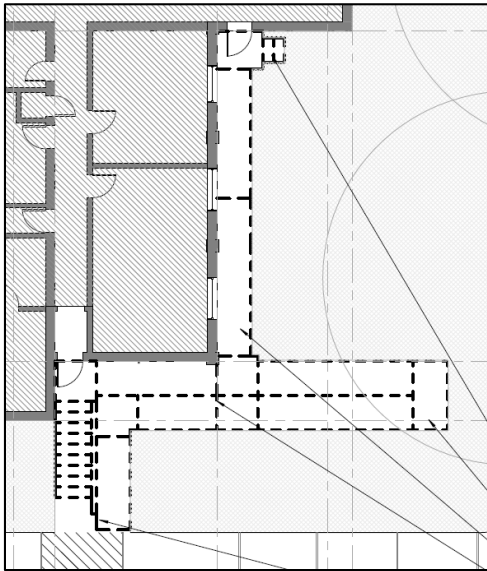


Phase I; Accessibility Improvement

- ❖ Scope of Work;
- Accessible ramp replacement



Phase I; Former Ramp

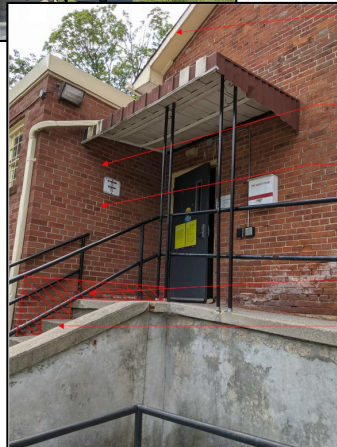




Phase I; Former Ramp Vs. New East Elevation



Before

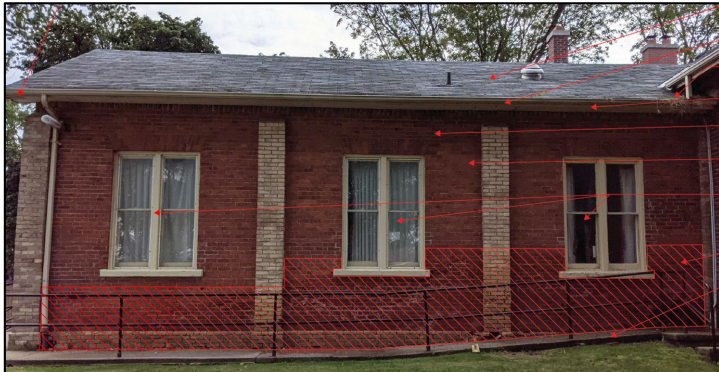


After



Phase I; The Path from ramp to the emergency door

North Elevation



Before



After





Phase II; Facility Accessibility Upgrades

❖ Scope of Work;

- To upgrade the facility's universal, man's and women's washrooms.
- To upgrade the kitchen, kitchenette.



Phase II; Facility Upgrades

❖ Schedule;

Project Start Date; July 4th, 2024

Project Estimated completion Date; September 30th, 2024

- To minimize facility downtime as much as possible, the construction project will be executed in three (3) to four (4) phases.

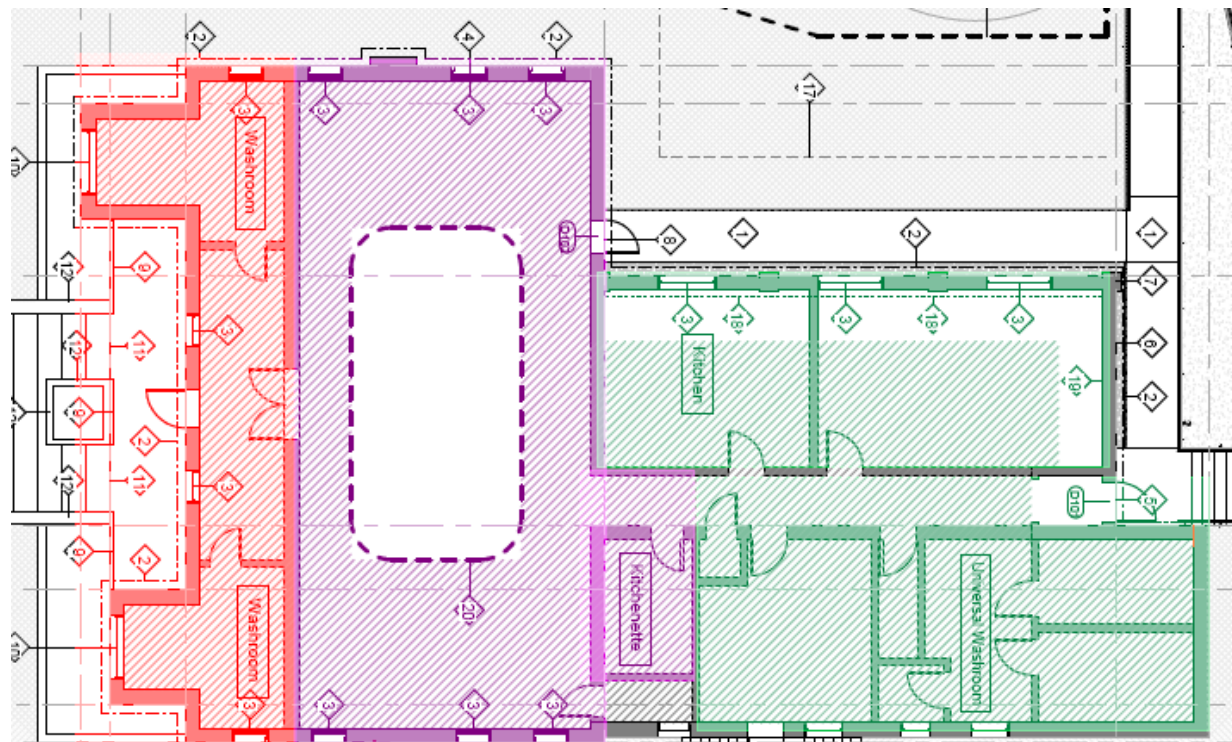


Phase II; Facility Upgrades

❖ Construction Phases;

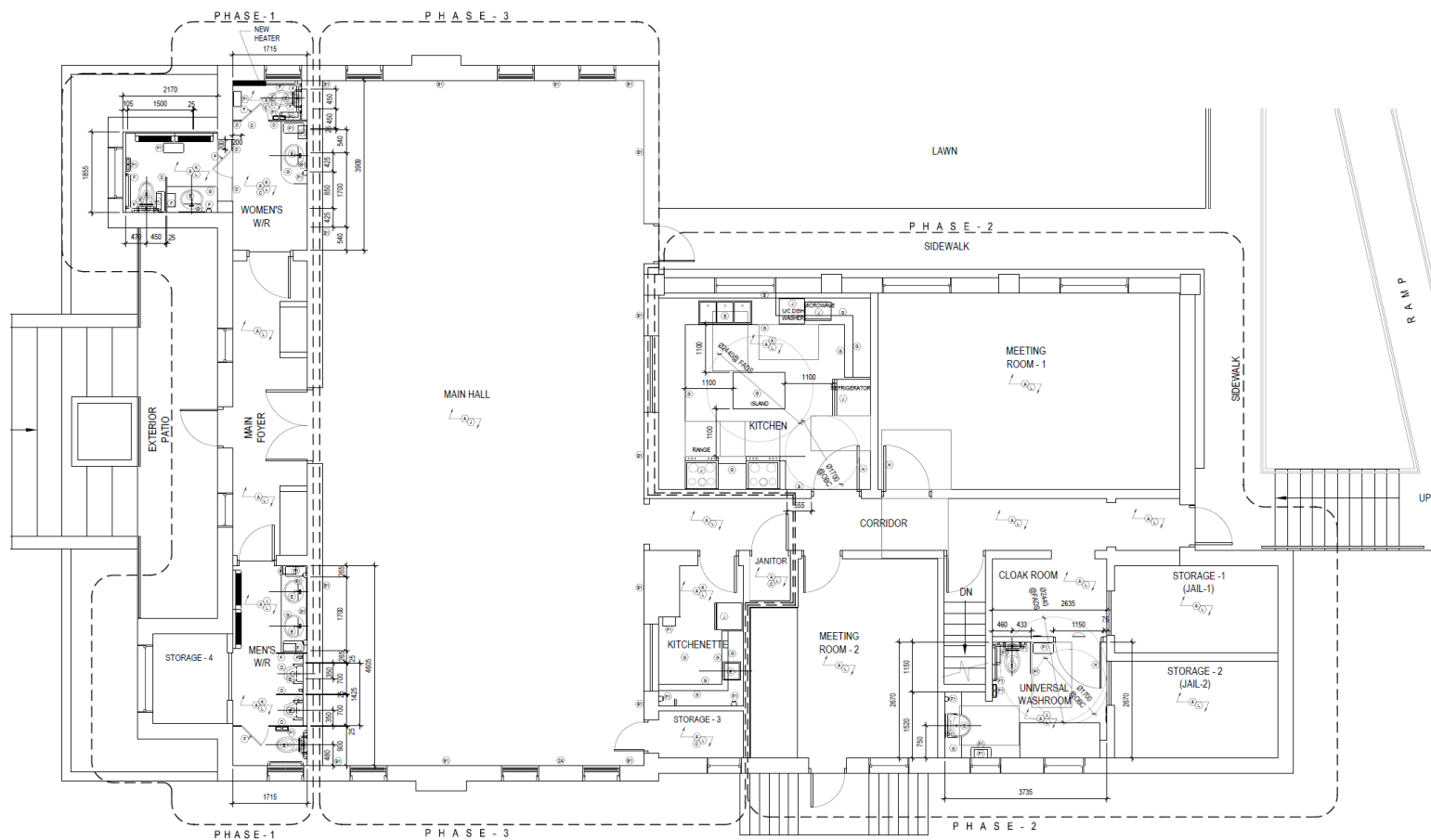
- Phase 1 in red
- Phase 2 in green
- Phase 3 in purple

Note: Only during phase 3 will the entire facility be closed down.



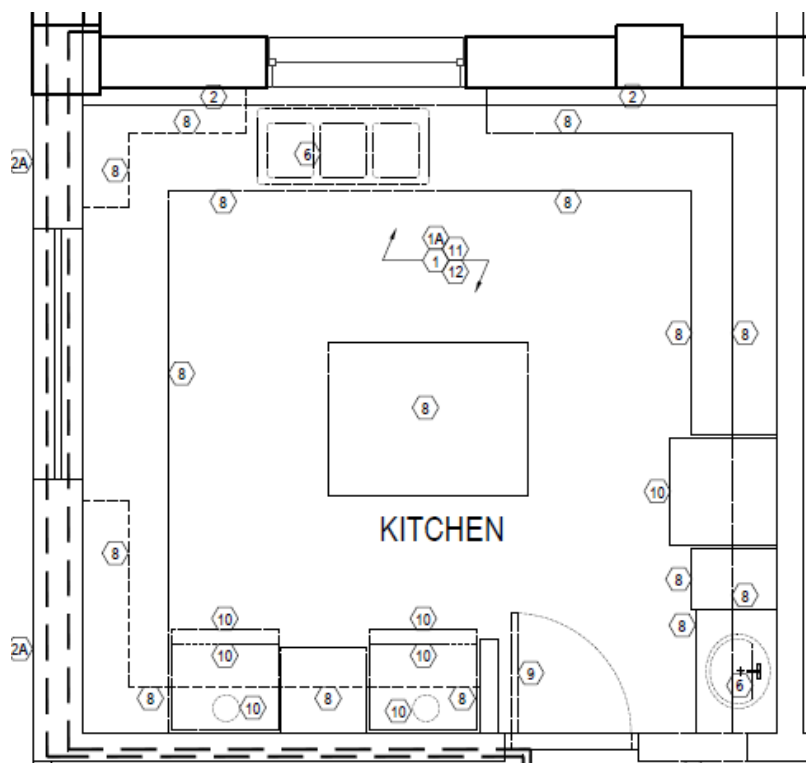


❖ Phase II; Schematic Design





Phase II; Kitchen Existing Conditions



Phase II; Kitchen

FADS: Mississauga Facility Accessibility Design Standards

- For Range, the controls will have to be in front or side, so as to avoid crossing over the hot surface.
- For Refrigerator, 50 % of the freezer shall be within 1370mm height.
- The existing kitchen door is not accessible. We will be changing the door to comply with FADS.
- For toe kick of your kitchen cabinets needs to be at least 9".

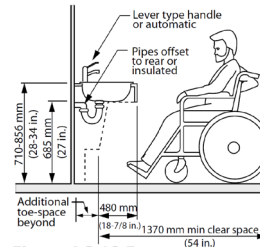
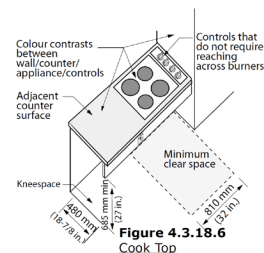


Figure 4.3.18.5
Kitchen Sink

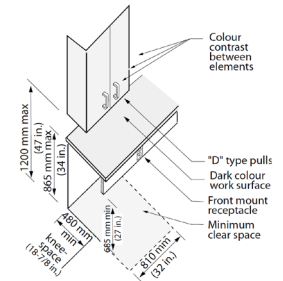
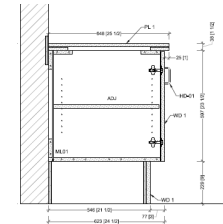


Figure 4.3.18.4
Storage Elements

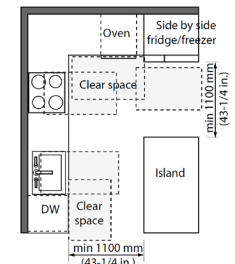
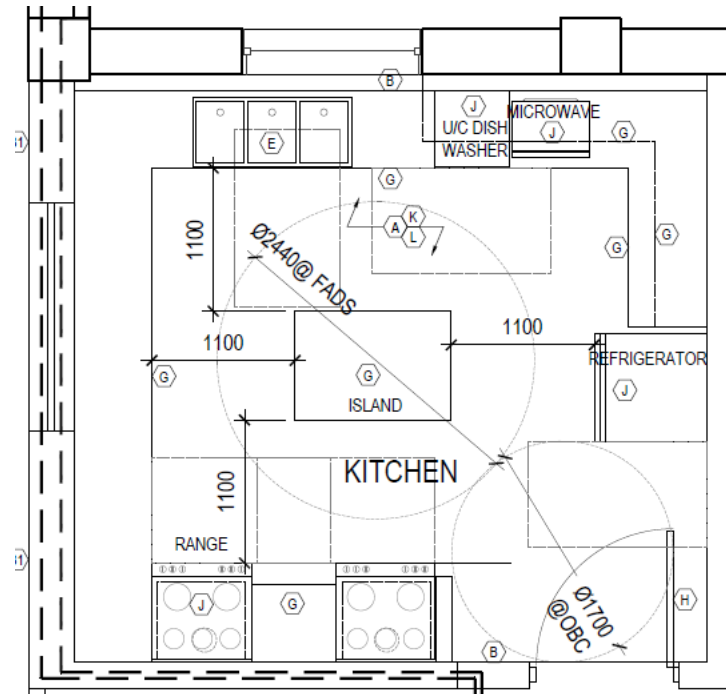
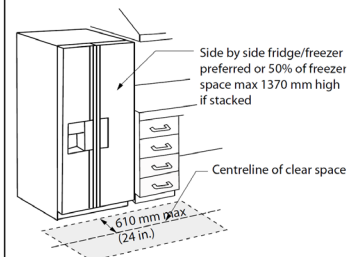
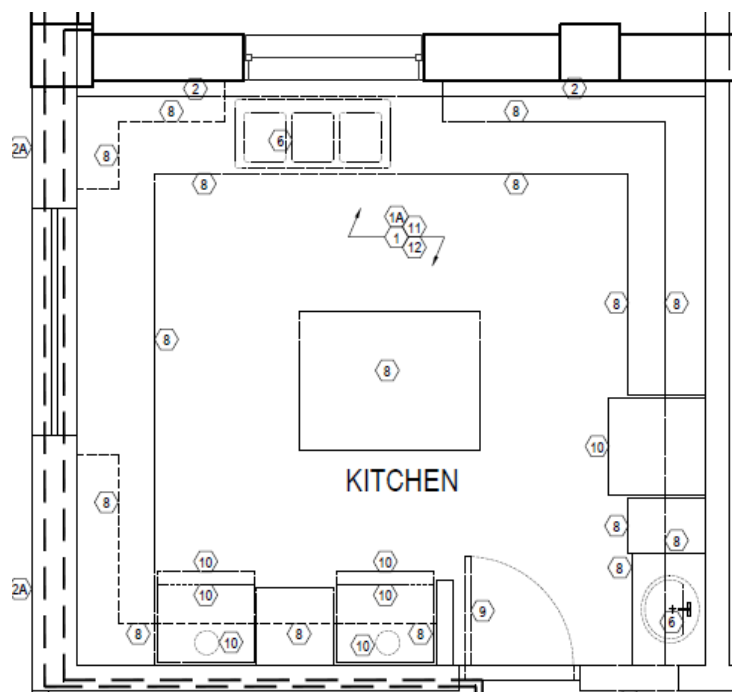


Figure 4.3.18.3
L-Shaped Kitchen with Island

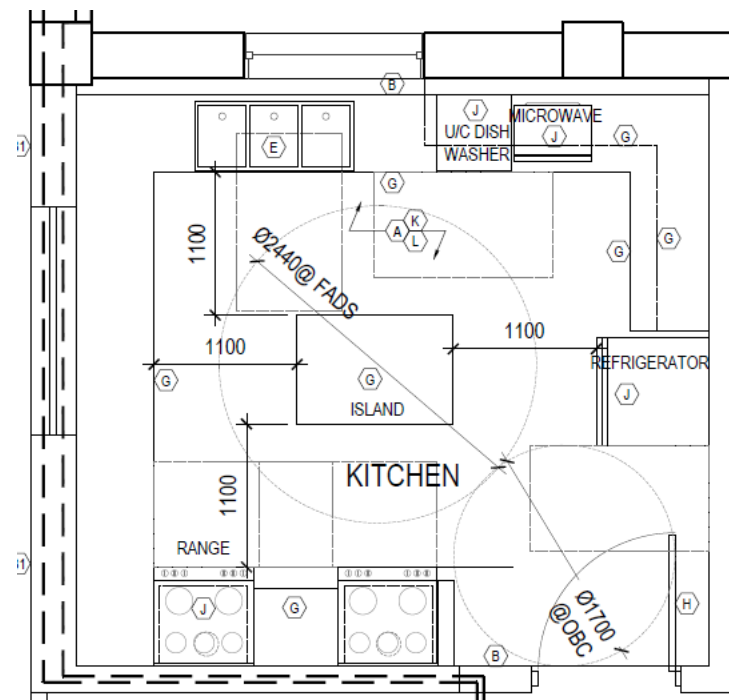




❖ Phase II; Kitchen Existing Vs. New Layout



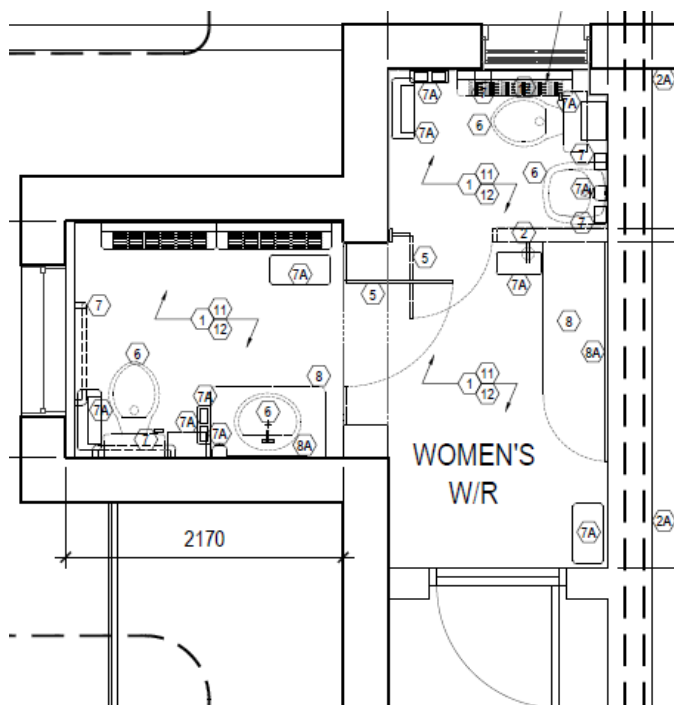
Existing



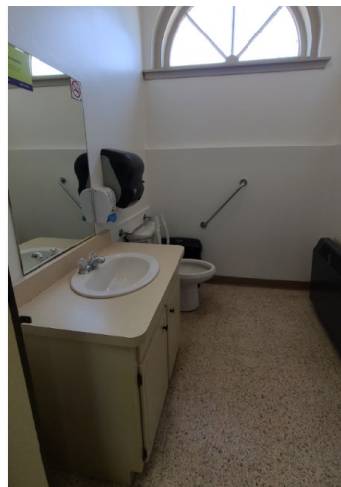
New



❖ Phase II; Women's Washrooms Existing Condition



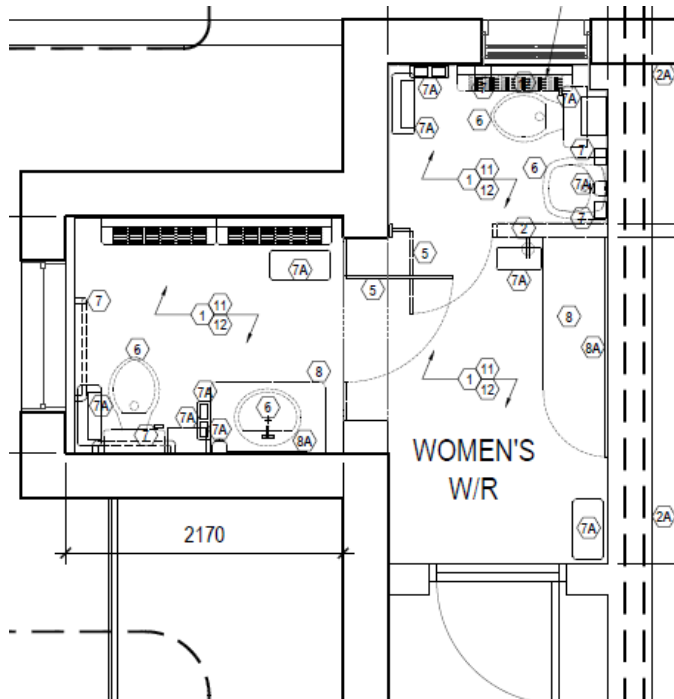
Existing



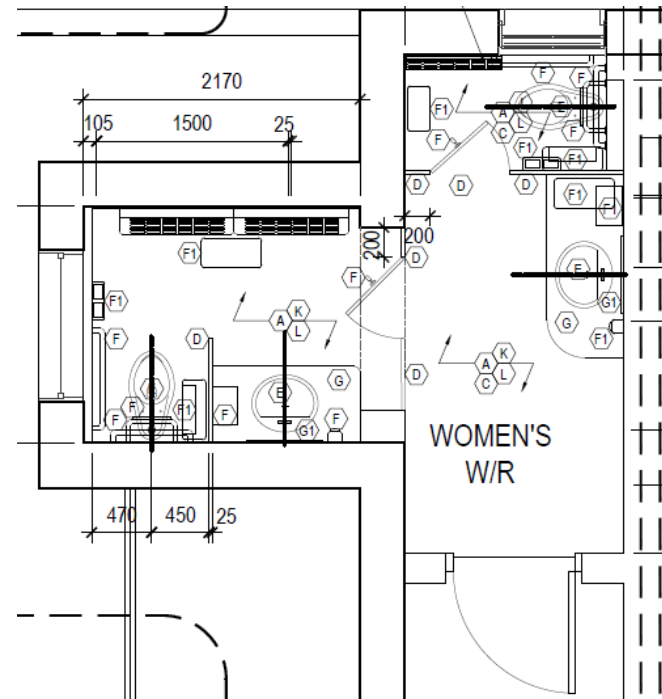


❖ Phase II; Women's Washrooms Existing Vs. New Layout

- With maximum of 600mm crawl space under the Kitchen and all services (water, electrical and sanitary/plumbing), it is recommended to not relocate the fixtures.
- Grab bars will be installed to facilitate use for senior citizens.

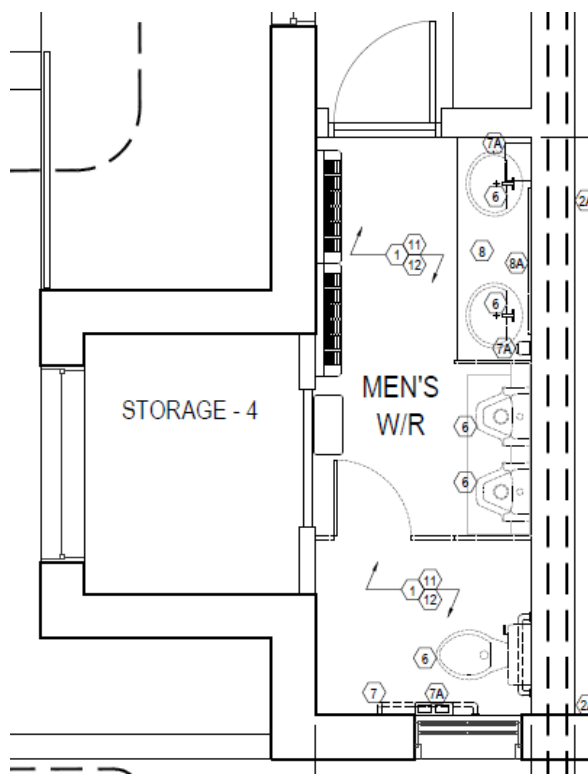


Existing



New

❖ Phase II; Men's Washrooms Existing Condition

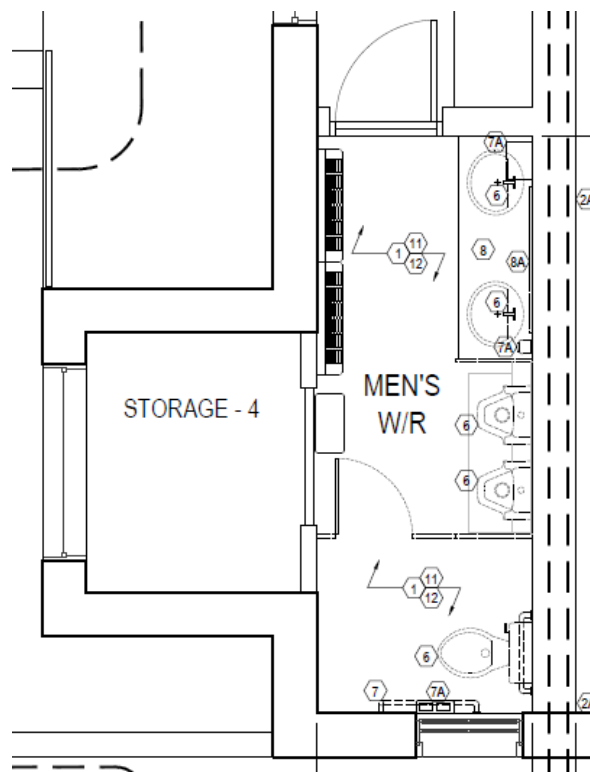


Existing

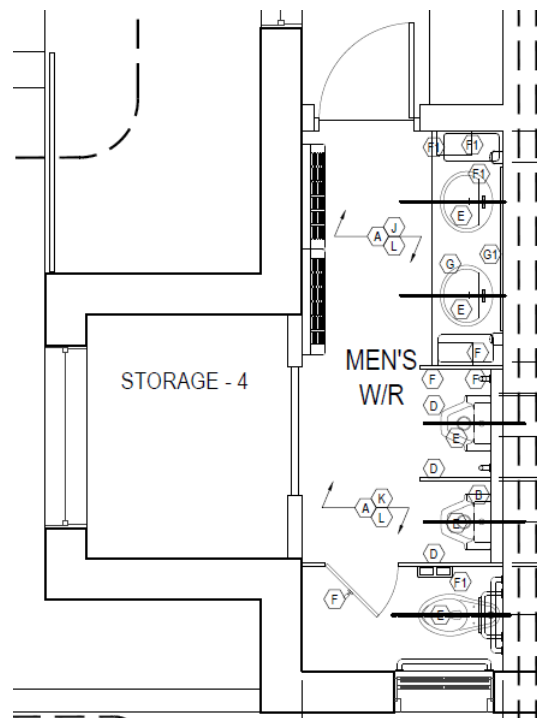




❖ Phase II; Men's Washrooms Existing Vs. New Layout



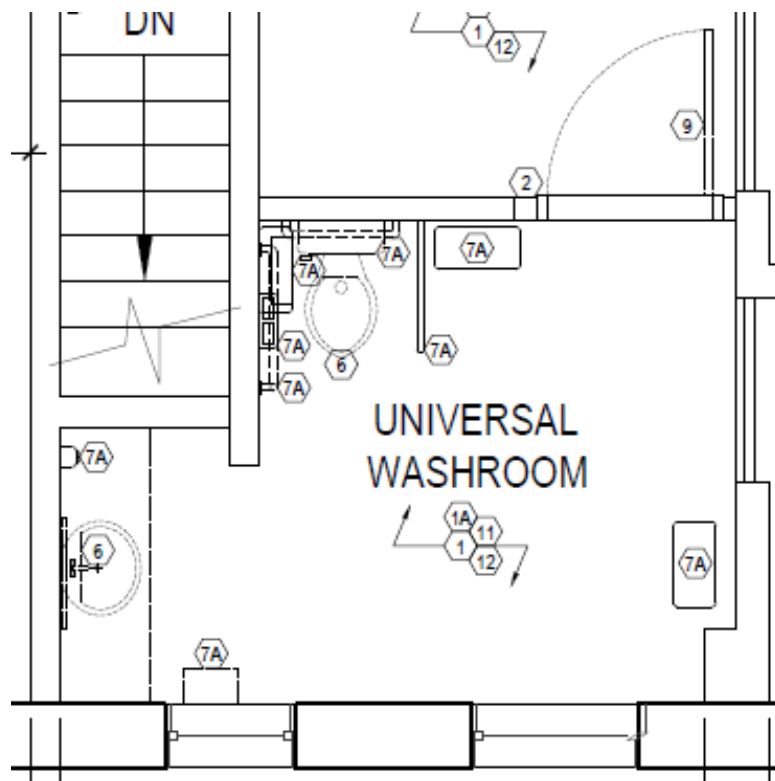
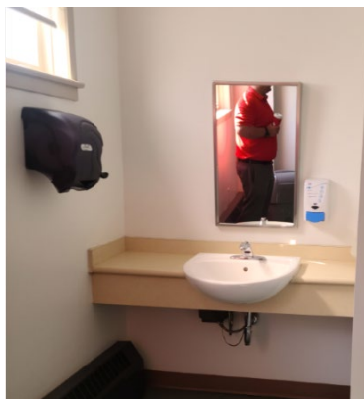
Existing



New

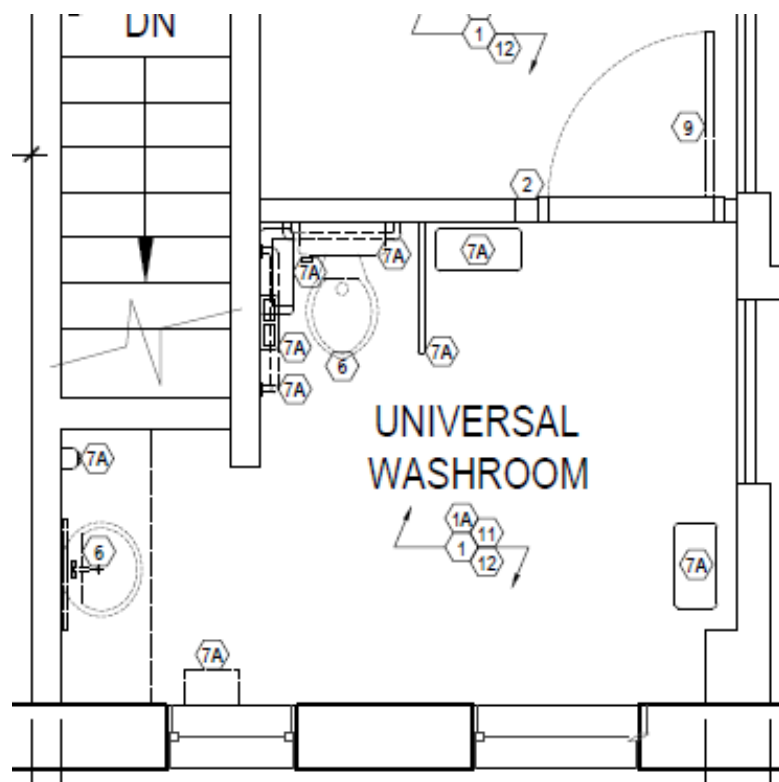


❖ Phase II; Universal Barrier Free Washrooms Existing Condition

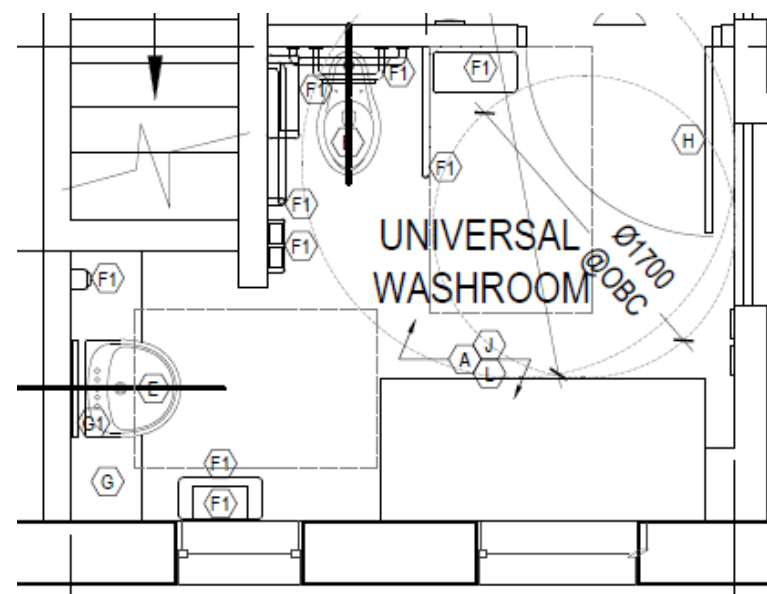




❖ Phase II; Universal Barrier Free Washrooms Existing Vs. New Layout



Existing



New