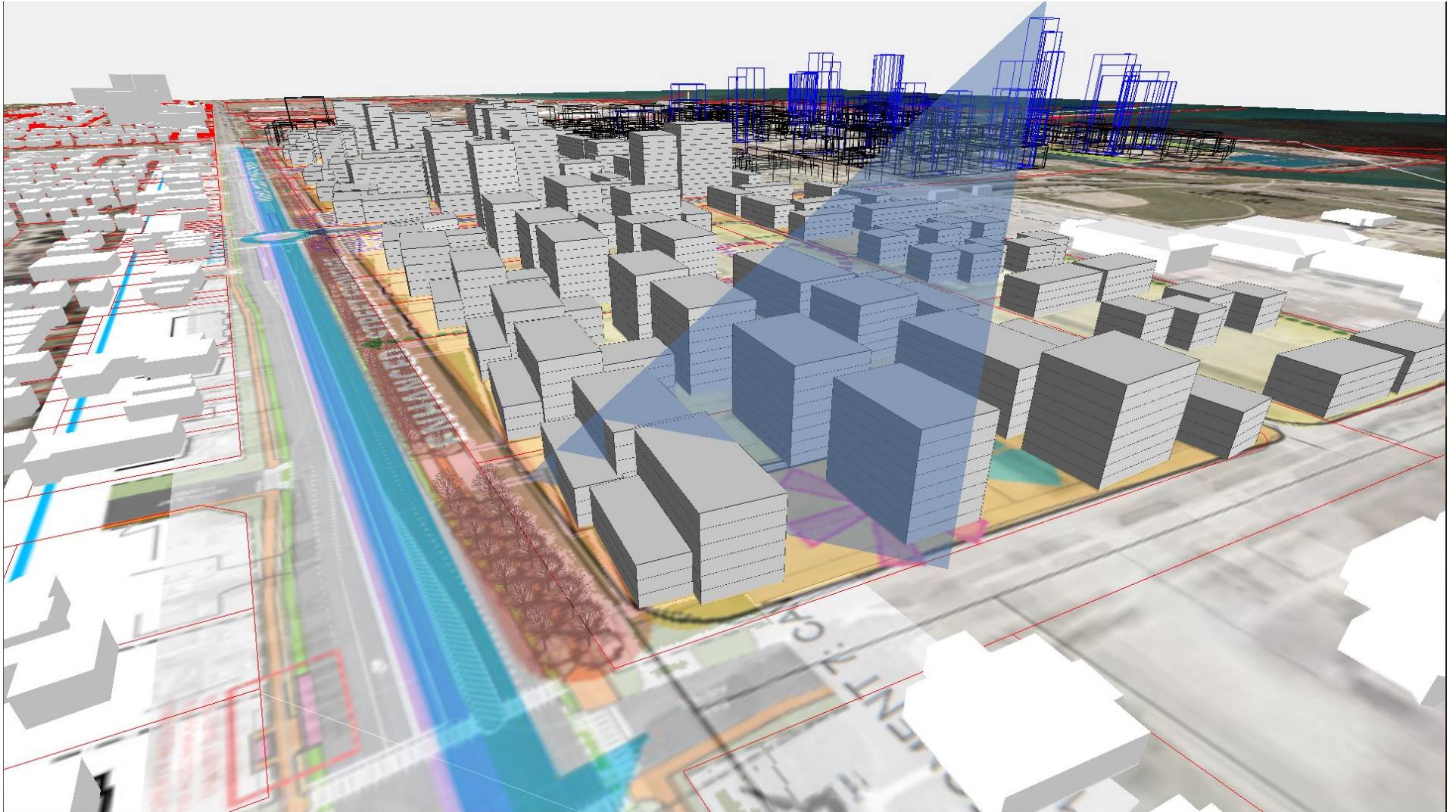


# Comparative Rangeview images

*Prepared by Professor John Danahy*

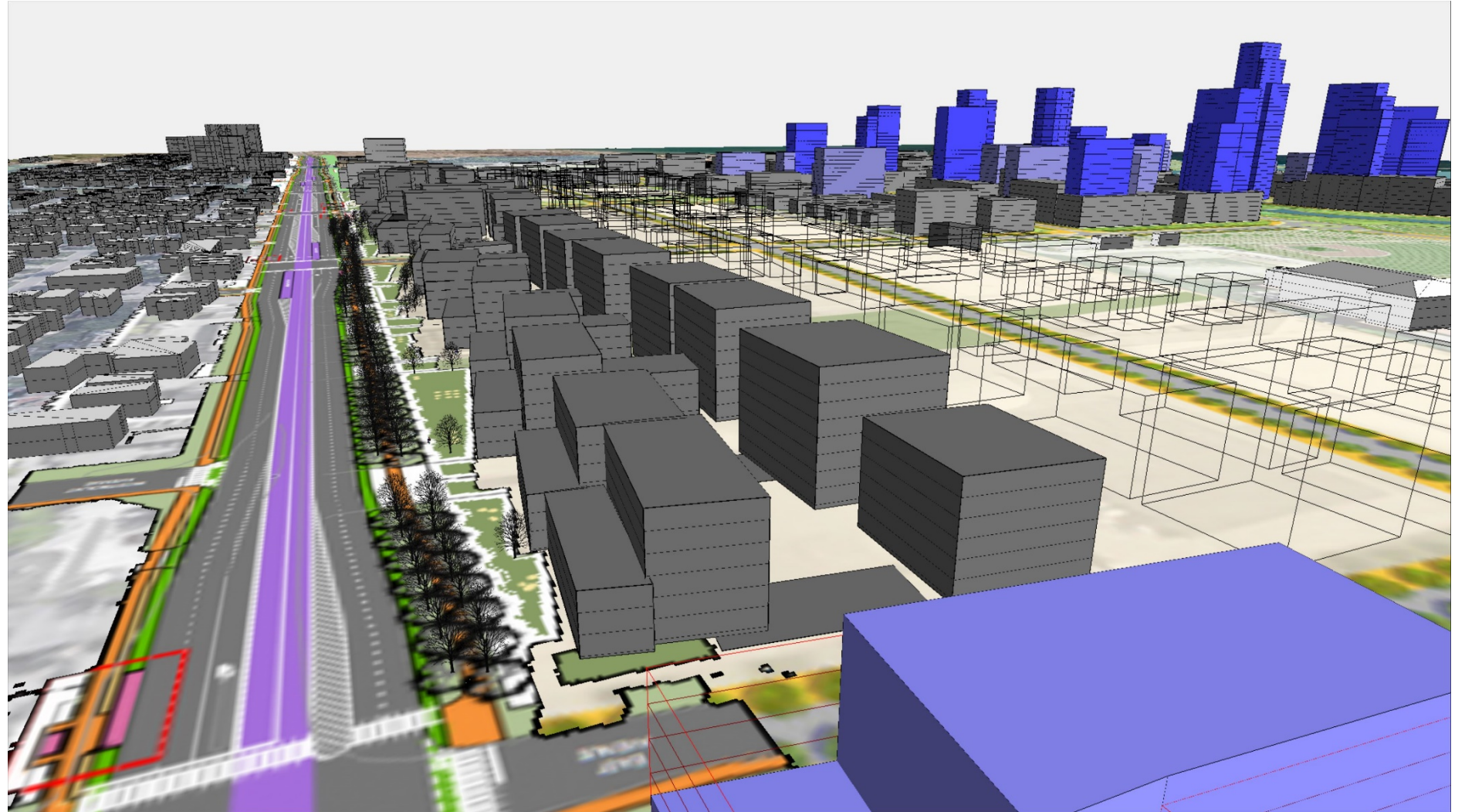




# Comparative Rangeview images

*Prepared by Professor John Danahy*

Designate East Avenue to Etobicoke Creek section a cultural heritage landscape that incorporates the **Linear Heritage Park and Promenade** as well as key community heritage architecture such as Lakeview Park Public School



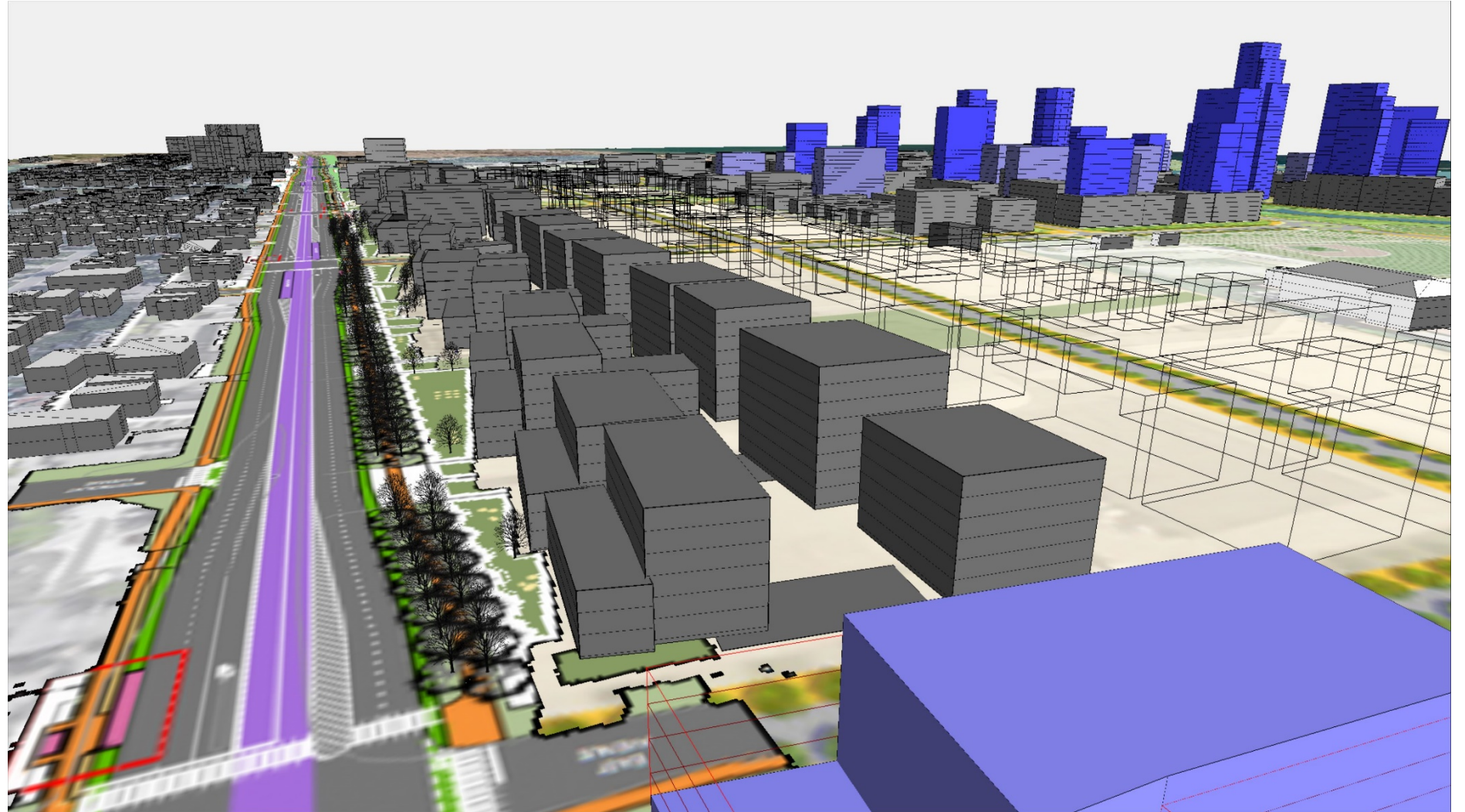


# Comparative Rangeview images

*Prepared by Professor John Danahy*

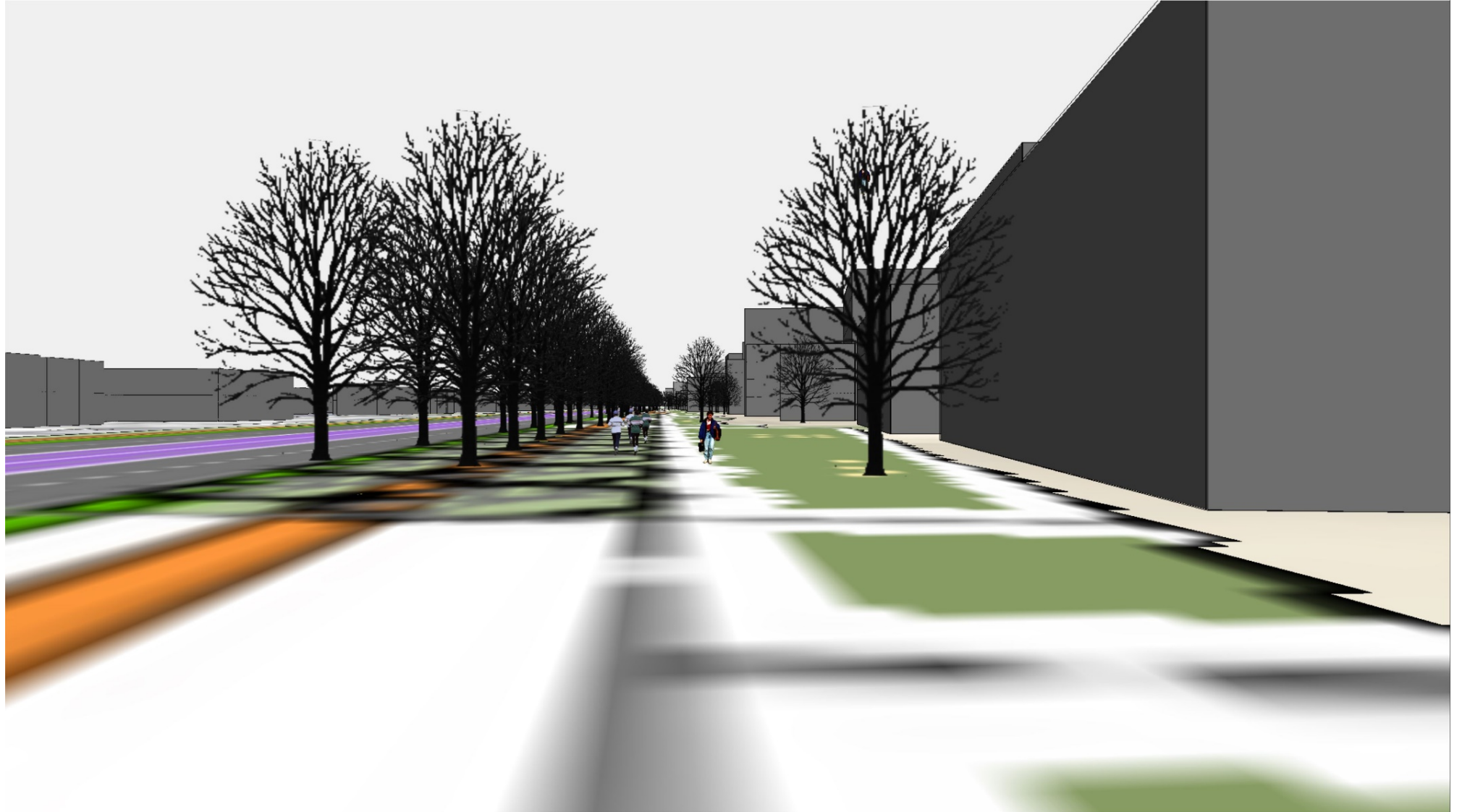
**UofT suggestion of 3-6 storeys at Lakeshore 8-8 storeys at rear – meeting target 3780 units. Setbacks reflect heritage industrial edge and creates a series of park niches beside the cycling and pedestrian promenade**

**Centre for Landscape Research - UofT**



# Comparative Rangeview images

*Prepared by Professor John Danahy*







## Lakeview's Sense of Place, Heritage & Public Realm

- Creating a Linear Heritage Park on the south side of Lakeshore Road
- First envisioned in the Lakeview Legacy Project
  - Based on the industrial facades, setbacks and firing range alignment pattern
- Use park & promenade as:
  - unique human scale green gateway to Lakeview
  - active living destination for the community
  - transition & gateway to the waterfront parks, destination features and high-density living options in the major waterfront node.







