

Lakeview Park Public School S.S. No. 7

Presentation to Peel District School Board

*Presentation compiled by Deborah Goss
Input & review by Krys Stechly
With special thanks to Richard Collins for providing
the attached Historical Assessment*

“Show me your school-houses. They will tell me more about the people of your township than I can learn in any other way. They speak the truth... about the attitude of your municipality towards all that makes for genuine progress.”

Ontario Department of Education, 1909

A Rural School in an Urbanizing Community

- ▶ Two-floor, four room, red brick schoolhouse built in 1923
- ▶ Two-floor, two room extension to north & west added in 1954
- ▶ Addition to east of original in 1965
- ▶ Included in City inventory of heritage properties due to architectural merit
- ▶ Cupola on roof, emphasizes agricultural character of community when built. Georgian Revival style with elements of Edwardian period
- ▶ Brass plaque above portico is unique “S.S. #7” no other school built in Mississauga has this design element
- ▶ Longest operational school in Mississauga (94 years) - only S.S. school to function as both an elementary & secondary school



1239 Lakeshore Road East, Lakeview

- ▶ Views of property from north, east, south & west
- ▶ Property to north is flat, used for school recreational field
- ▶ Pine, Sugar maple & black maple trees form canopy at front of original 1923 main entrance
- ▶ Lot size 9748.97m² - depth 205m
- ▶ Second access road at rear of school



looking north



looking east



looking south



looking west

(all photos above: Bing Maps)

* Refer to Ontario Department of Education Plan Book from 1909 - set standards for rural schoolhouses in Province

Physical, Historical & Contextual Assessment of Property Provided

by Richard Collins

- ▶ Report provided (see attached)
Assessment of significance of Lakeview Park Public School
- ▶ Interest to PDSB being a rural school built to first cohesive design standards in province set out in 1909 (first example of 'best practices')
- ▶ Standards discouraged wood, hence using brick as a sense of permanence
- ▶ Only two examples of two one-room schoolhouses remain in Mississauga
- ▶ This is the only school remaining of this type in Mississauga
- ▶ Heritage building, today lying vacant



A PHYSICAL, HISTORICAL and CONTEXTUAL ASSESSMENT of

1239 LAKESHORE RD. E.

MISSISSAUGA, ONTARIO

Historical significance to community

- ▶ When **Hurricane Hazel** hit the area in Oct 1954, Lakeview Park School was used to shelter residents who were flooded. They remained at the school until the storm subsided & accommodations found
- ▶ The school was used for **after school programming** for children for the women working in the Small Arms Munition Factory
- ▶ **Indigenous community (Cree women)** working at the Small Arms placed their children in the school education system
- ▶ **The First Lakeview Girl Guides** formed in Lakeview in 1927 met at the school, followed by First Lakeview Brownie Pack in 1931
- ▶ **Returning soldiers** housed across street at the military camp - included military families
- ▶ Lakeview Park School was the **heart of the community** for family activities, sports, skating & local events



▲ 1st Lakeview Girl Guides, 1949 (Mildred Potter Anderson)



Peel County Hockey Champions 1946-47, Lakeview Park School.
Front row: Stan Doboz, Ken Flowers, Albert Lowe, Harvey Thomas, Jim Robinson. Second row: Raymond Lowe, Joe Flucko, Roy Luyben, Martin Hickey. Back row: Bill Campbell, Ted Burrows, Principal. Absent: Graham Joyce, Vic DiMarco, Don and Bob Smith. [Photo: Ted Burrows]



Lakeview Park School. School Parade along Lakeshore Road, September, 1947. [Photo: Mr. and Mrs. Ted Burrows]

Community use for future generations

What this heritage school can provide:

- ▶ Historic journey of the community; Lakeview history (journey from indigenous roots to rural - military - utility and now new community & urbanization)
- ▶ Maintaining a link to our heritage, providing a sense of belonging for the 30,000+ new residents coming to Lakeview
- ▶ Lakeview time capsule
- ▶ Historic building for community use; community space, museum, arts, gallery, seniors gathering space
- ▶ Providing continuity for community - integrating old residents with new, young with old, newcomers with Lakeview residents/indigenous community

**Success in other communities
with similar facilities**



Heritage building requires renovation

How will we achieve this?

- ▶ Federal funding heritage
- ▶ Federal funding: Heritage / Indigenous / LTC or seniors affordable on acreage at rear
- ▶ **Partner with a developer - development of one-acre property at rear while maintaining the historic building**
- ▶ Seniors affordable housing development
- ▶ Lakeview Long term care facility / seniors housing
- ▶ Benefit to community, former students & local area
- ▶ Additional spaces required for intensification

Community driven operation



1239 Lakeshore Road East - property lines
Plan H-23, Lots 11 to 14, and part of Lots 35 and 36 (Google Earth)

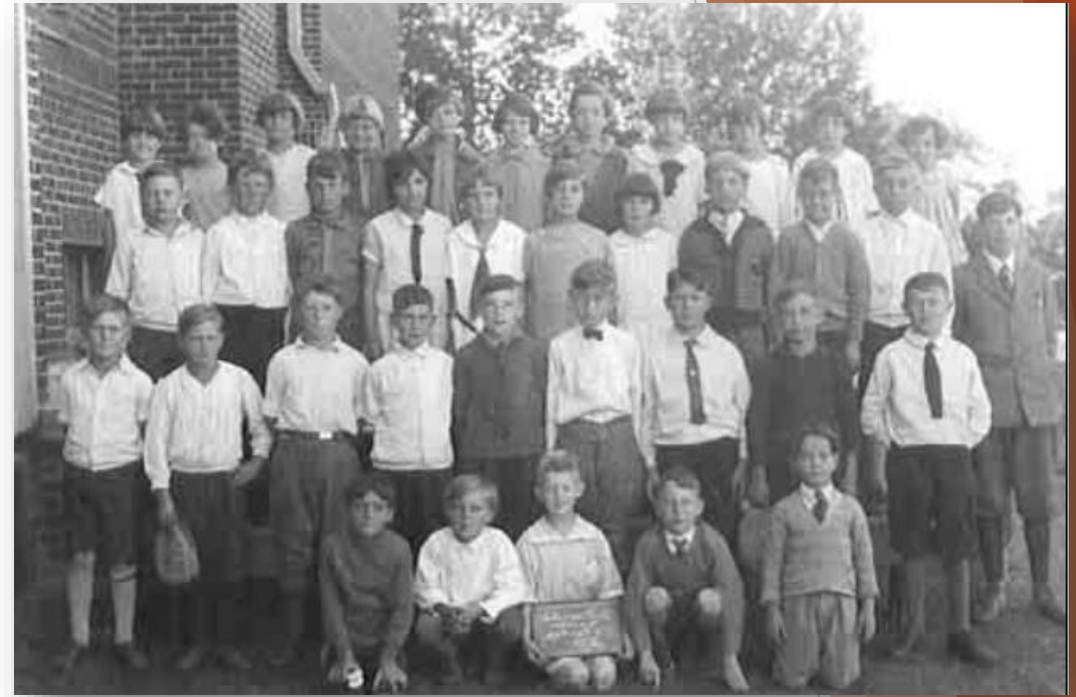
Community Spaces in Lakeview

- ▶ Current shortage of community accessible & affordable spaces for Lakeview residents
- ▶ Vital that the historic buildings are kept intact for the community
- ▶ Other Lakeview heritage buildings lost to private exclusive use (Cawthra-Elliott House, Adamson Estate)
- ▶ Emotional attachment to school by many members of Lakeview's community
- ▶ Numerous options this property could bring to Lakeview community

Unique opportunity: 100th Anniversary in 2023

- ▶ Celebration in 1973 - 50th anniversary
- ▶ Celebration in 1993 - 70th anniversary
- ▶ Celebration in 2023 - 100th anniversary
 - Many students remain living in area
 - Many teachers remain living in area
 - School admin staff (including a school standards staff member lives in the community)

**Opportunity to preserve this school
for the 100th anniversary & for the
next 100 years of Lakeview**



Lakeview Park Class, 1933



Unique opportunities for Community Space

- ▶ Gymnasium
 - ▶ provide needed space for community recreational space (noncompetitive sports)
 - ▶ Possible use for weddings - events
- ▶ Classrooms
 - ▶ Potential to find new use for old buildings
 - ▶ Pop up artist space
 - ▶ Community kitchen
 - ▶ Arts & crafts space
 - ▶ Maker spaces -e.g. woodworking, high tech to no tech tools - photography - theatre



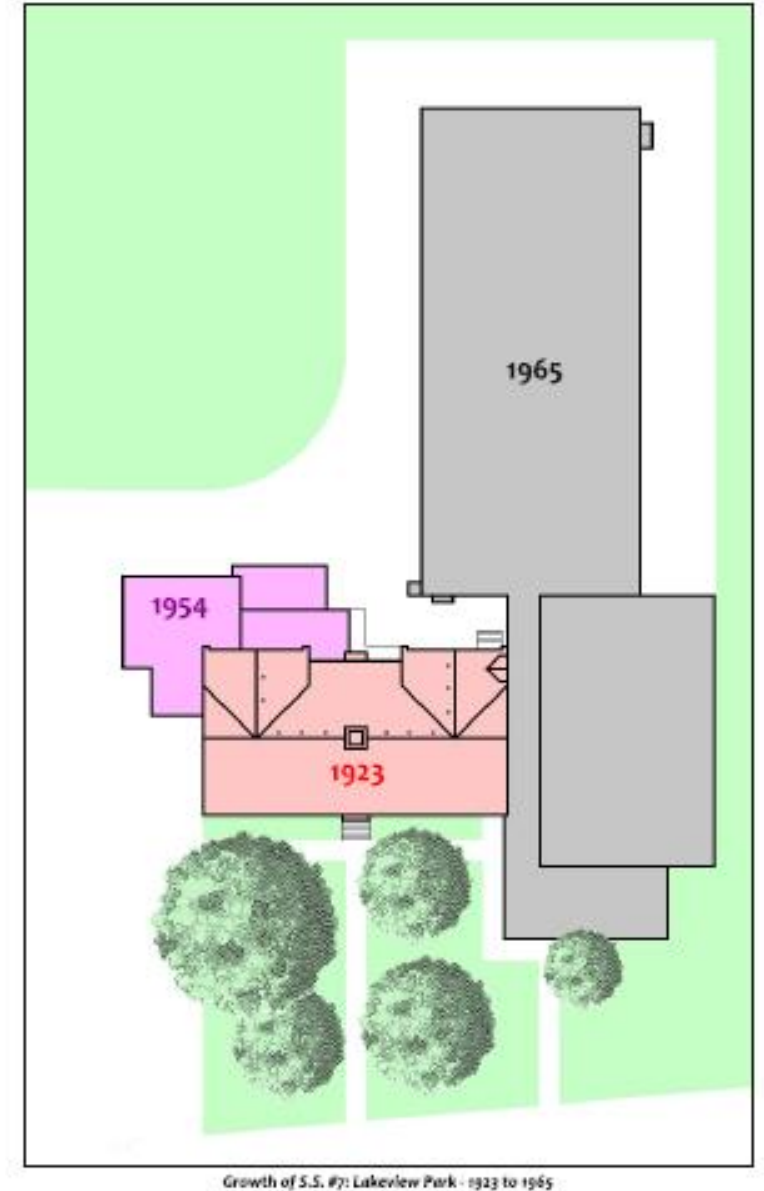
"MAKERSPACE IS A GENERAL TERM FOR A PLACE WHERE PEOPLE GET TOGETHER TO MAKE THINGS. MAKERSPACES MIGHT FOCUS ON ELECTRONICS, ROBOTICS, WOODWORKING, SEWING, LASER CUTTING, PROGRAMMING, OR SOME COMBINATION OF THESE SKILLS."

Success in other communities with similar facilities



Fulfills all criteria of Heritage Ontario Act 2006

- ✓ Heritage Act determines 1923 section of building is worthy of protection complying with 7 of the 9 subsections mentioned
- ✓ Design - physical value - historic & associative value & contextual value all met
- ✓ Regulation 9/06 of Section 29 of Ontario Heritage Act



Solution

- Development site - the right developer seeing potential for unique co-operation using acreage at rear of building as development
- Additional community hub for the existing & growing community in historic building
- Affordable seniors housing build on acreage
- Government funding potential
- Heritage /affordable seniors/long term care facility/indigenous - funding available
- High percentage of seniors in Lakeview exists - allow seniors to age in community
- How many other communities are preparing for aging in place?



ARCHITECTURAL
CONSERVANCY
ONTARIO



Our unique opportunity in Lakeview

- ▶ Approaching the 100th anniversary of Lakeview Park School
- ▶ Bring this unique building back to the heart of the community
- ▶ Allow future generations a community hub & facility while remembering the history of previous generations

The old S.S. #7 schoolhouse tells us more about the people of old Mississauga than can be learned in any other way