

The Contractor shall verify all levels and dimensions on site and report all discrepancies to Robyn Huether Architect Inc. before beginning work. Do not scale the drawings. The Contractor shall be responsible for any changes made to the drawings without Robyn Huether Architect Inc.'s approval.

| | | |
|----------------------------|---------------------|------------------|
| PROJECT INFORMATION | | PAGE SIZE: 24x36 |
| Scale: As Shown | Date: 2023.10.30 | |
| City Project No.: 23727 | Sheet No.: | |
| Project No.: 202311 | A-000 | |



ISSUED FOR HERITAGE PERMIT
DECEMBER 7, 2023

ARCHITECTURAL

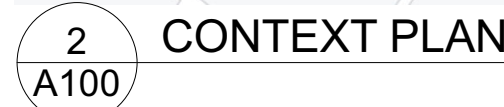
CIVIL - PENDING

SG-1 SITE GRADING PLAN

ELECTRICAL - PENDING

| | |
|------|----------------------------------------------------------|
| E001 | KEY PLAN, DRAWING LIST |
| E002 | ELECTRICAL SPECIFICATIONS |
| E003 | PROPOSED SITE LIGHTING LAYOUT, LEGEND, NOTES, DETAILS |

WHERE SIGNAGE NEEDS TO BE REMOVED FOR WORK REINSTATE AFTER WORK IS COMPLETE IN THE SAME POSITION. IF THE SIGNAGE INCURS DAMAGE DURING THE PROCESS NOTIFY THE CONSULTANT AND CLIENT IMMEDIATELY TO REVIEW.



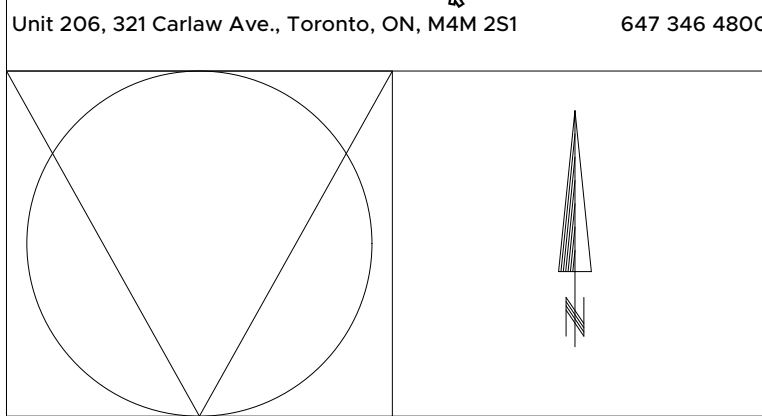
Adamson Estate
850 Enola Avenue
Mississauga, ON, L5G 4B2

| | |
|------------------------|-------|
| Project No.: 202311 | A-100 |
|------------------------|-------|

 **MISSISSAUGA**

 **EAGLEBROOKE
ENGINEERING**

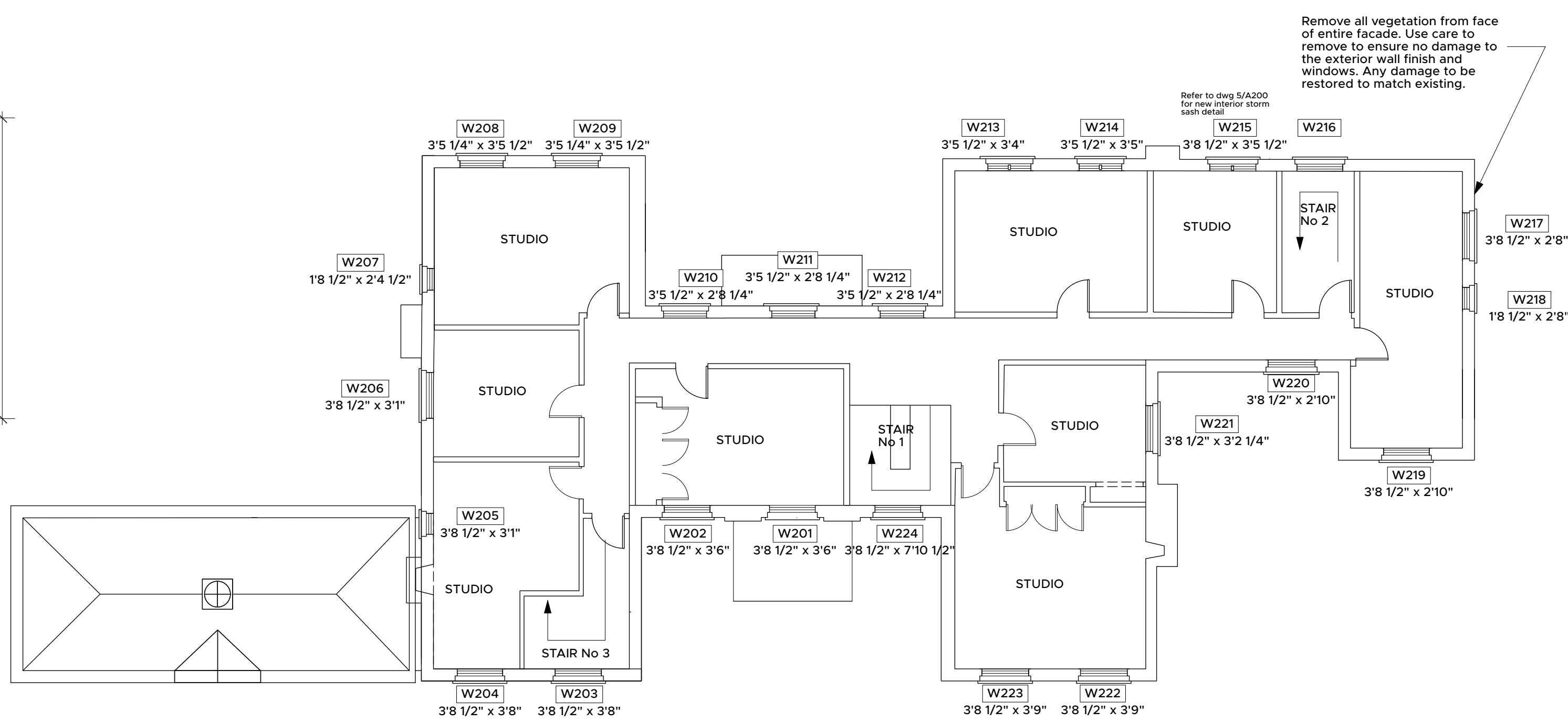
 **ALGAL ENGINEERING LTD.**
CONSULTING ENGINEERS
100-515 Consumers Rd, Toronto, ON, M2J 4Z2
Tel: (416) 484-0707 Fax: (416) 849-0148
www.algal.ca



The Contractor shall verify all levels and dimensions on site and report all discrepancies to Robyn Huether Architect Inc. before beginning work. Do not scale the drawings. The Contractor shall be responsible for any changes made to the drawings without Robyn Huether Architect Inc.'s approval.

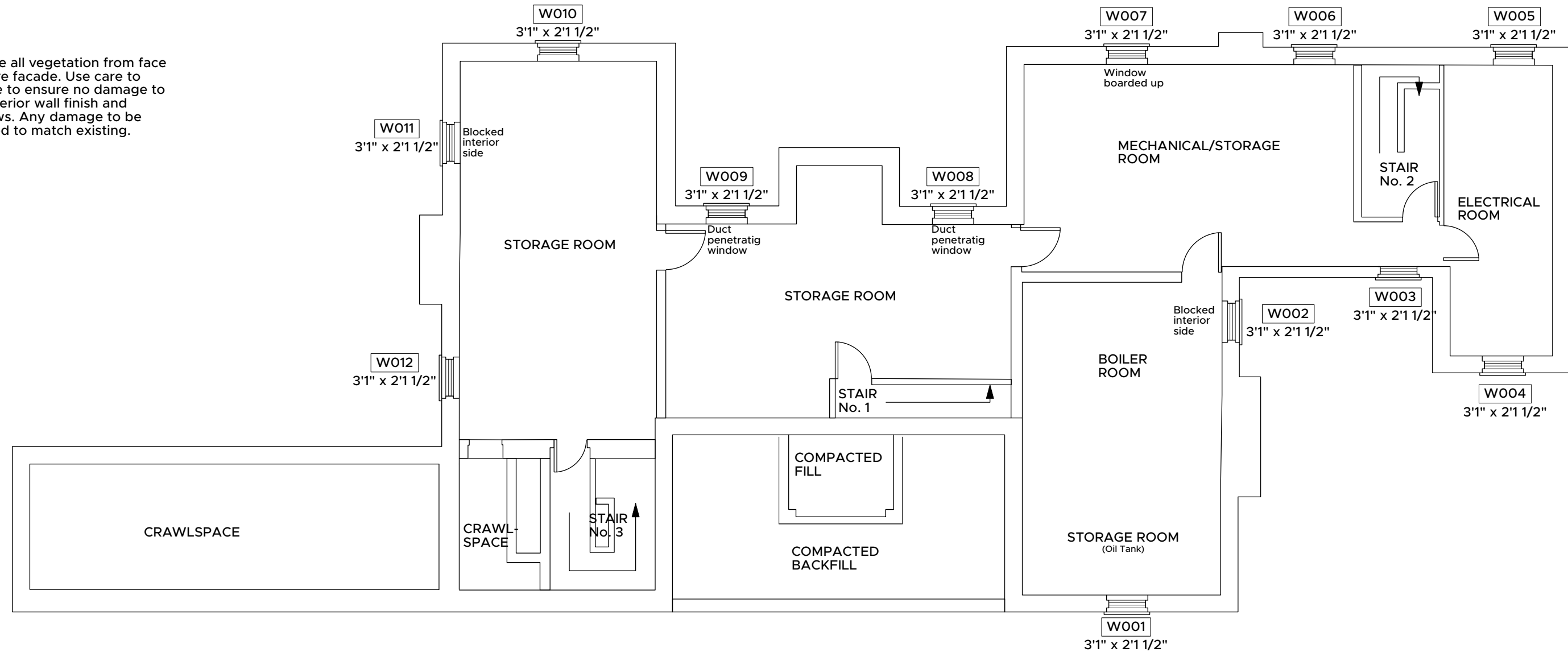
FLOOR PLANS

| | |
|----------------------------|---------------------|
| Scale: As Shown | Date: 2023.10.30 |
| City Project No.: 23727 | Sheet No.: |
| Project No.: 202311 | A-101 |



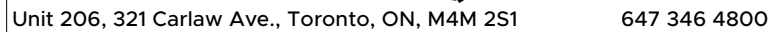
3 SECOND FLOOR PLAN
A101 Scale: N.T.S.

- Remove all vegetation from face of entire facade. Use care to remove to ensure no damage to the exterior wall finish and windows. Any damage to be restored to match existing.



1 BASEMENT PLAN
A101 Scale: N.T.S.

5. ASSUME WHERE WINDOWS ARE NOT OPERABLE THAT THEY ARE PAINTED SHUT AND THE ALIGNMENT REQUIRES ADJUSTMENT.



A-200

