

900 & 904 MISSISSAUGA HEIGHTS DRIVE  
**R16 EXCEPTION ZONE COMPARISON**  
MARCH 2024

- R16 ZONING COMPARISONS
- MARCH 2024



## 900 MISSISSAUGA HEIGHTS DRIVE

LOT NUMBER	LOT AREA (m <sup>2</sup> )	LOT FRONTAGE (m)
LOT 1	800m <sup>2</sup>	18.60m
LOT 2	593m <sup>2</sup>	18.30m
LOT 3	558m <sup>2</sup>	18.30m
LOT 4	558m <sup>2</sup>	18.30m
LOT 5	558m <sup>2</sup>	18.30m
LOT 6	558m <sup>2</sup>	18.30m
LOT 7	683m <sup>2</sup>	21.00m
LOT 8	746m <sup>2</sup>	27.00m
LOT 9	1,758m <sup>2</sup>	43.00m

## 904 MISSISSAUGA HEIGHTS DRIVE

LOT NUMBER	LOT AREA (m <sup>2</sup> )	LOT FRONTAGE (m)
LOT 10	907m <sup>2</sup>	30.00m
LOT 11	2,565m <sup>2</sup>	58.01m
LOT 12	576m <sup>2</sup>	19.50m
LOT 13	728m <sup>2</sup>	23.36m
LOT 14	553m <sup>2</sup>	18.36m
LOT 15	551m <sup>2</sup>	21.33m
LOT 16	558m <sup>2</sup>	18.30m
LOT 17	558m <sup>2</sup>	18.30m
LOT 18	733m <sup>2</sup>	25.63m

 **R16-12 ZONE**



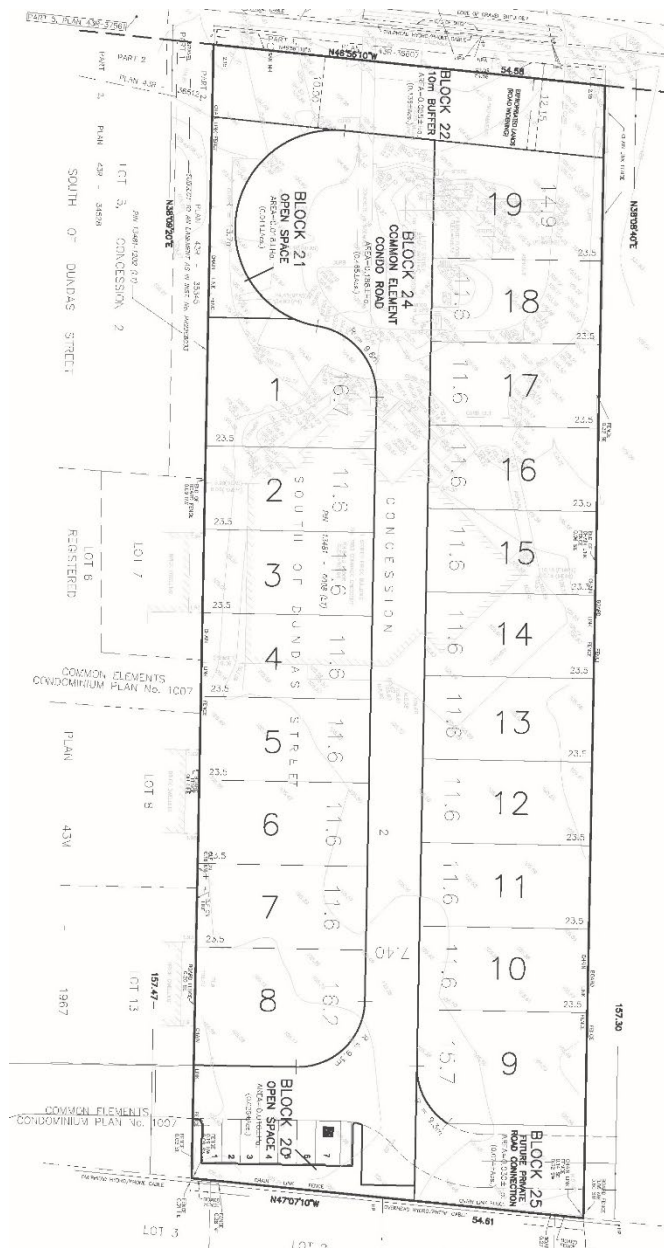
LOT NUMBER	LOT AREA (m <sup>2</sup> )	LOT FRONTAGE (m)
LOT 10	239m <sup>2</sup>	10.76m
LOT 11	230m <sup>2</sup>	10.00m
LOT 12	233m <sup>2</sup>	10.00m
LOT 13	230m <sup>2</sup>	10.00m
LOT 14	251m <sup>2</sup>	10.00m
LOT 15	302m <sup>2</sup>	10.00m
LOT 16	364m <sup>2</sup>	17.40m
LOT 17	422m <sup>2</sup>	19.08m
LOT 18	388m <sup>2</sup>	19.02m
LOT 19	353m <sup>2</sup>	17.40m
LOT 20	230m <sup>2</sup>	10.00m
LOT 21	230m <sup>2</sup>	10.00m
LOT 22	277m <sup>2</sup>	12.53m

# CITY PARK HOMES INC. — KING STREET EAST AND CAMILLA ROAD

R16-12 ZONE



LOT NUMBER	LOT AREA (m <sup>2</sup> )	LOT FRONTAGE (m)
LOT 1	429m <sup>2</sup>	13.00m
LOT 2	304m <sup>2</sup>	10.85m
LOT 3	293m <sup>2</sup>	10.85m
LOT 4	284m <sup>2</sup>	10.85m
LOT 5	286m <sup>2</sup>	11.95m
LOT 6	250m <sup>2</sup>	10.15m
LOT 7	250m <sup>2</sup>	10.15m
LOT 8	325m <sup>2</sup>	15.86m
LOT 9	364m <sup>2</sup>	11.14m
LOT 10	252m <sup>2</sup>	9.60m
LOT 11	291m <sup>2</sup>	11.40m
LOT 12	345m <sup>2</sup>	11.93m
LOT 13	276m <sup>2</sup>	12.00m
LOT 14	276m <sup>2</sup>	12.00m
LOT 15	276m <sup>2</sup>	12.00m
LOT 16	276m <sup>2</sup>	12.00m
LOT 17	286m <sup>2</sup>	12.00m
LOT 18	398m <sup>2</sup>	11.69m



LOT NUMBER	LOT AREA (m <sup>2</sup> )	LOT FRONTAGE (m)
LOT 1	389m <sup>2</sup>	16.70m
LOT 2	272m <sup>2</sup>	11.60m
LOT 3	272m <sup>2</sup>	11.60m
LOT 4	272m <sup>2</sup>	11.60m
LOT 5	272m <sup>2</sup>	11.60m
LOT 6	272m <sup>2</sup>	11.60m
LOT 7	272m <sup>2</sup>	11.60m
LOT 8	365m <sup>2</sup>	16.20m
LOT 9	356m <sup>2</sup>	15.70m
LOT 10	272m <sup>2</sup>	11.60m
LOT 11	272m <sup>2</sup>	11.60m
LOT 12	272m <sup>2</sup>	11.60m
LOT 13	272m <sup>2</sup>	11.60m
LOT 14	272m <sup>2</sup>	11.60m
LOT 15	272m <sup>2</sup>	11.60m
LOT 16	272m <sup>2</sup>	11.60m
LOT 17	272m <sup>2</sup>	11.60m
LOT 18	272m <sup>2</sup>	11.60m
LOT 19	358m <sup>2</sup>	14.90m

ELM CORMACK (2017) INC. — 1583 CORMACK CRESCENT

R16-11 ZONE