

# Redevelopment of South Common Community Centre and Library: Millwork

Facility Accessibility Design  
Subcommittee

February 26, 2024



# Agenda

- Main Customer Service Desk
- Library Circulation Desk
- Multipurpose Rooms
- Kitchenettes
- Public Multi-Stall Washrooms
- Lavatory Sinks
- Aquatics Change Rooms



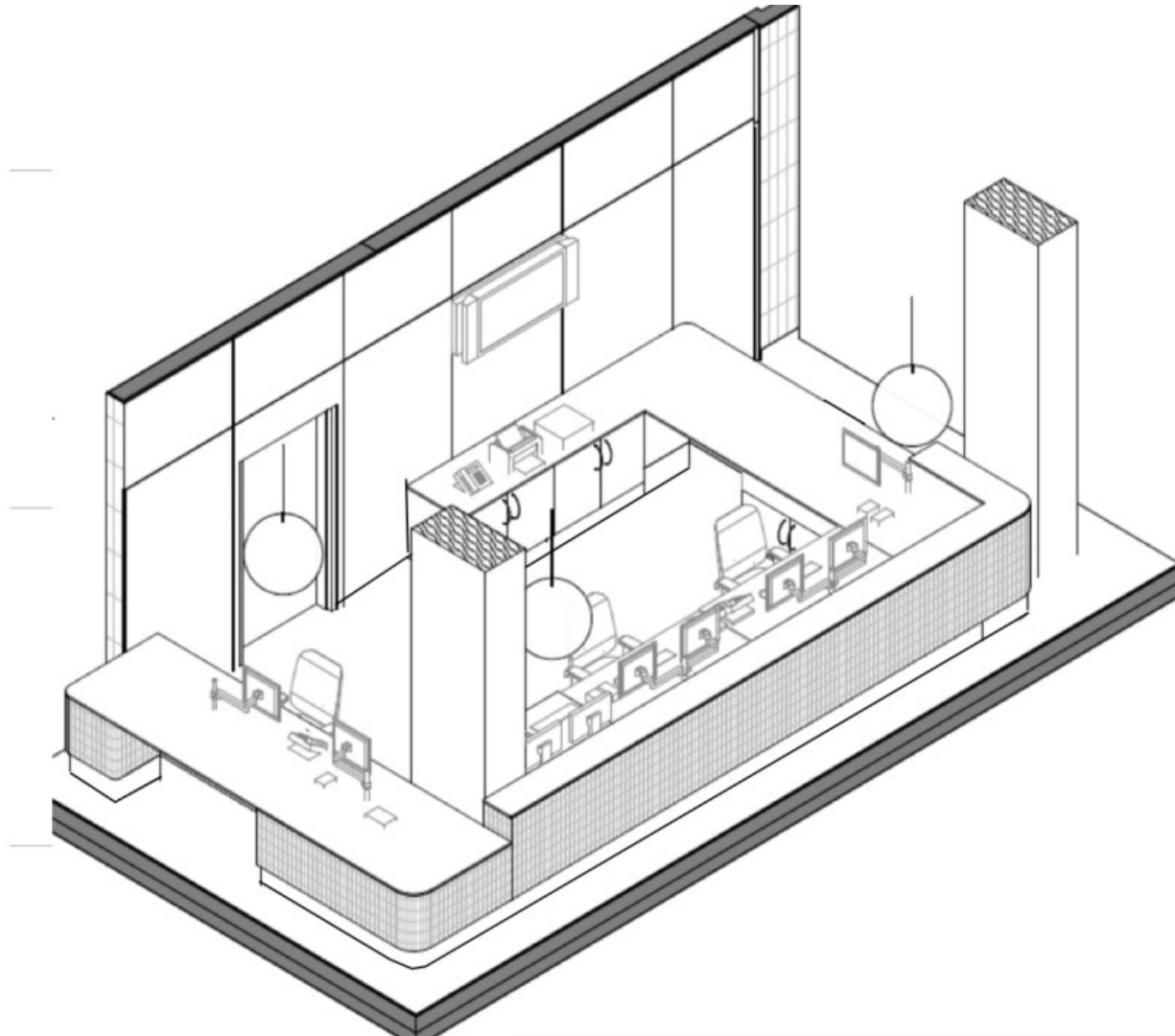
# Customer Service Desk



The Customer Service Desk is located on the Ground Floor Lobby, directly across the Main Building Entrance



# Customer Service Desk

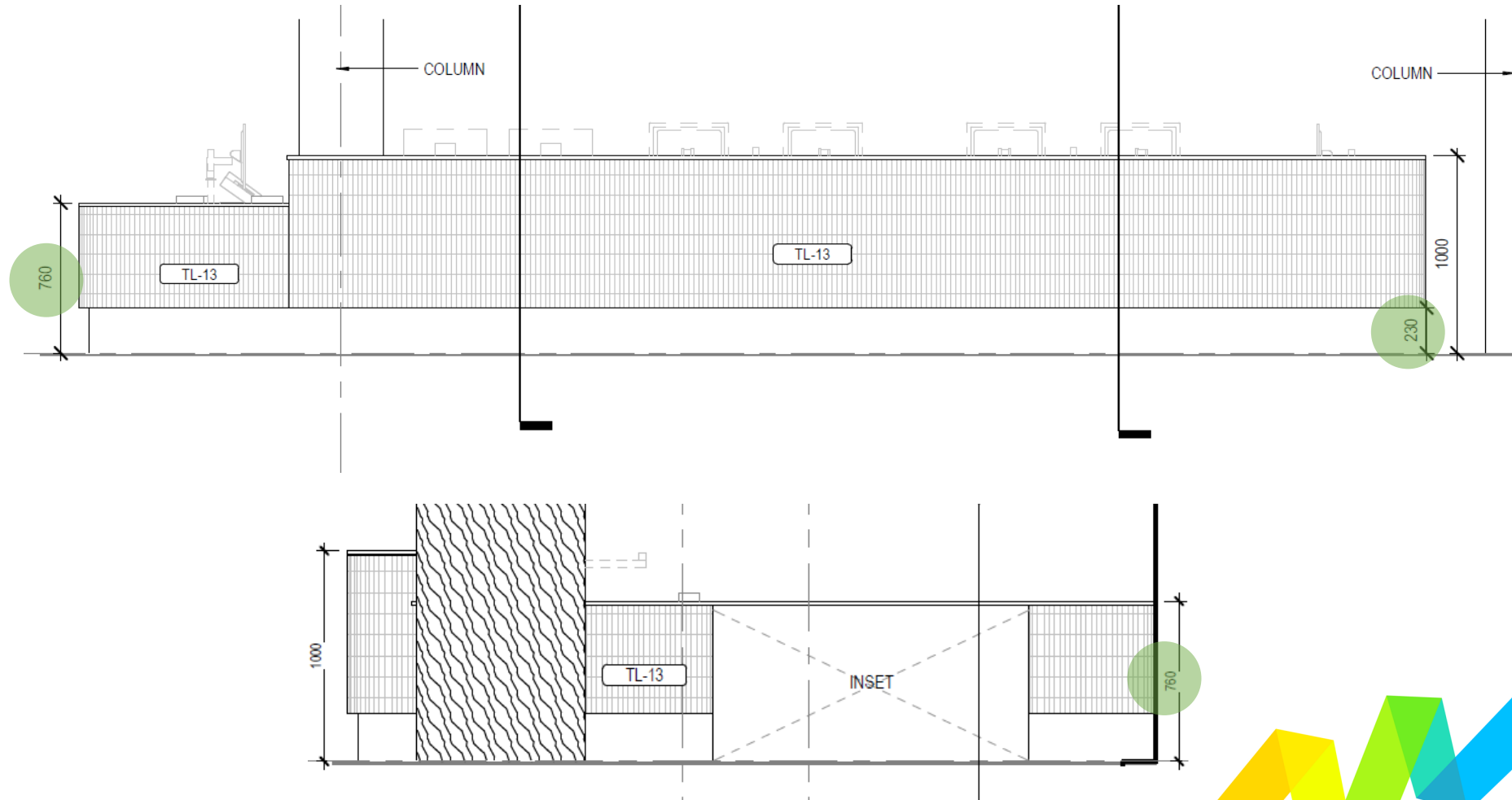


- Two (2) accessible height counters, with accessible knee space for both employees and customers
- Height adjustable desk for employees

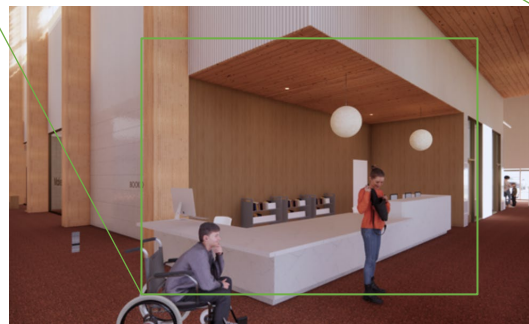




# Customer Service Desk



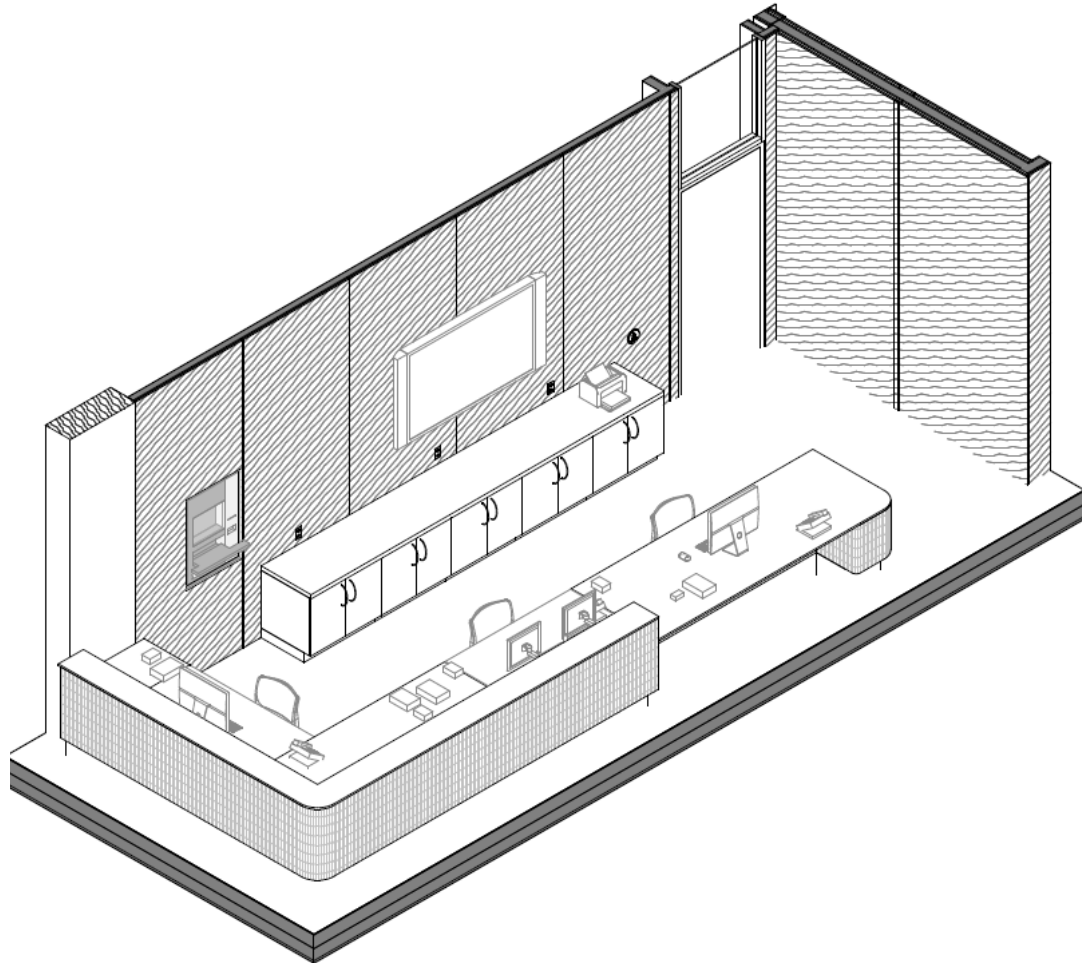
# Library Circulation Desk



- The Library is located on the Ground Floor
- The Circulation Desk is located at the center of the Library floor



# Library Circulation Desk

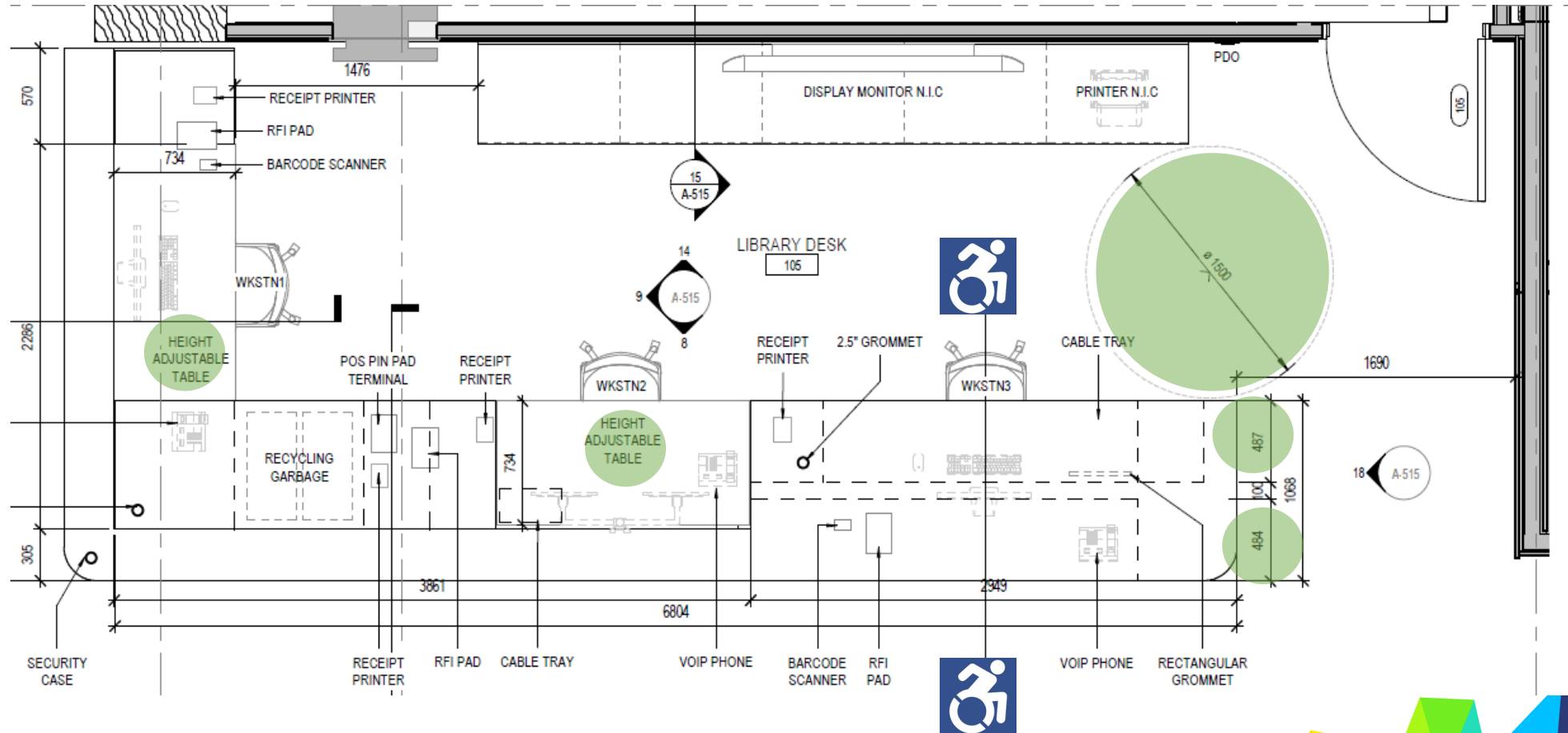


- Accessible height counter, with knee space for employees and public
- Staff workstations have height adjustable desks

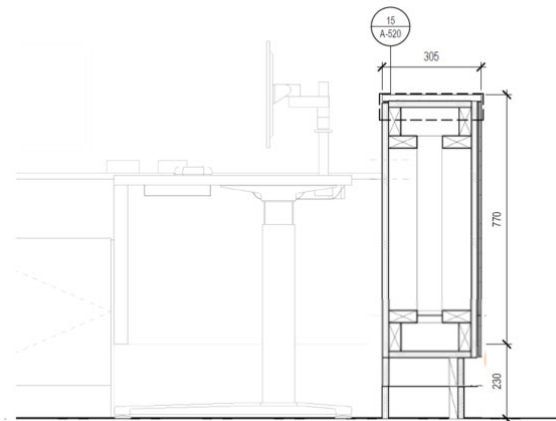
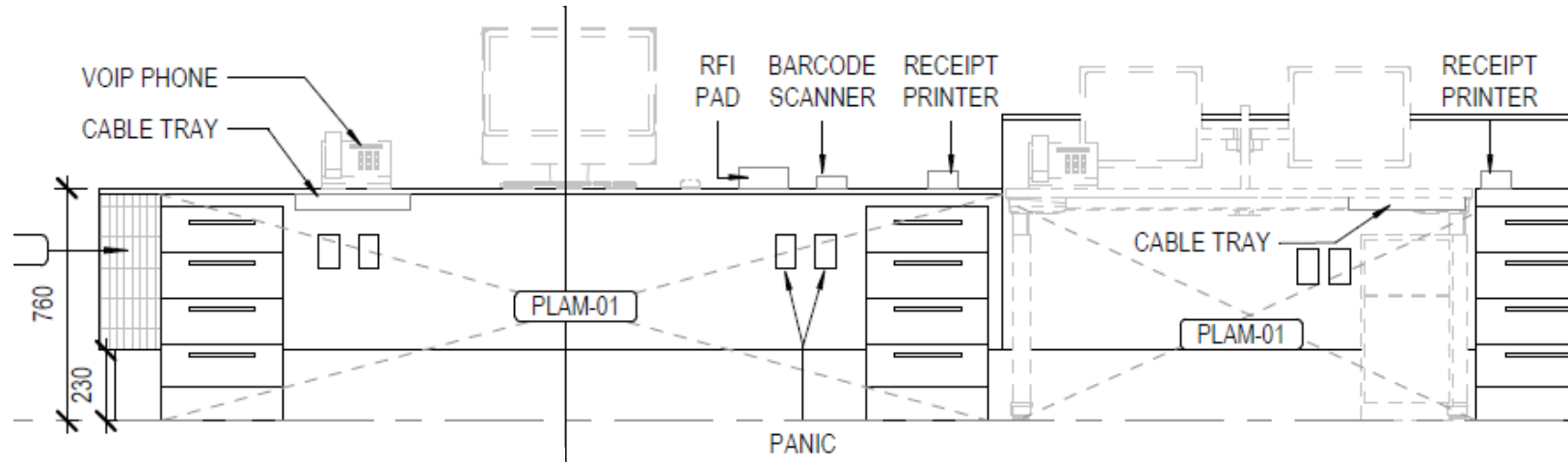




# Library Circulation Desk



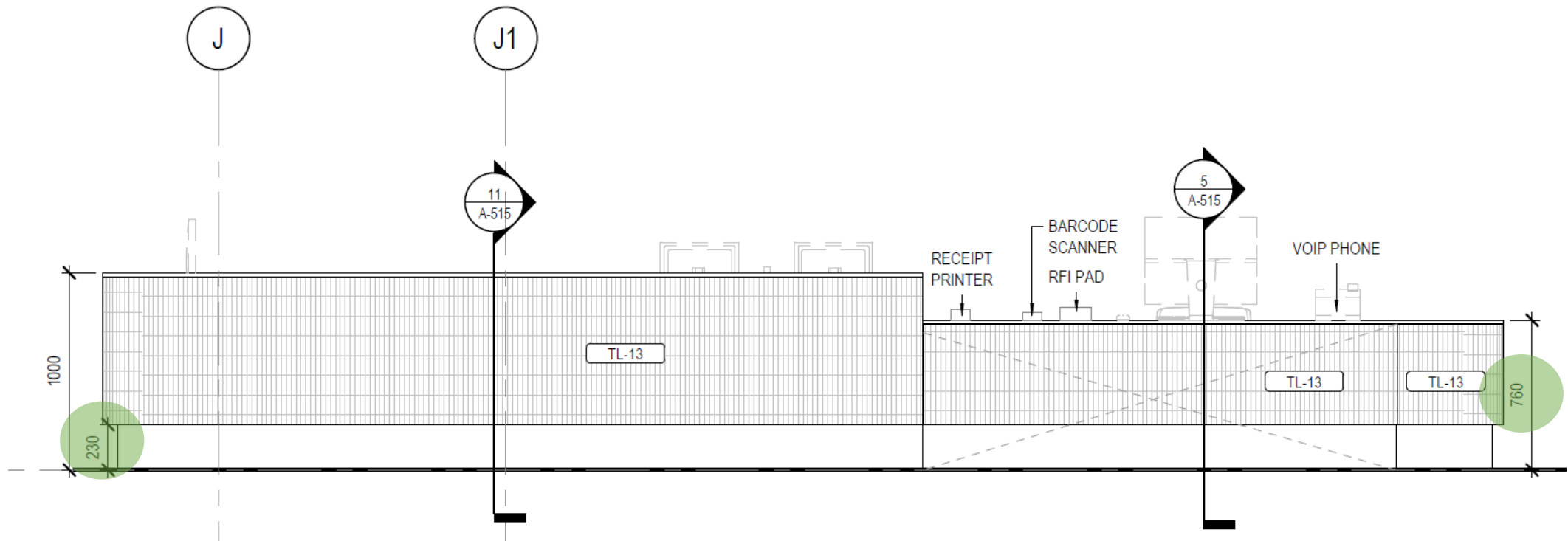
# Library Circulation Desk



- Combination of fixed millwork elements and loose furniture to achieve both a fixed accessible height counter, and height adjustable desks for employees



# Library Circulation Desk



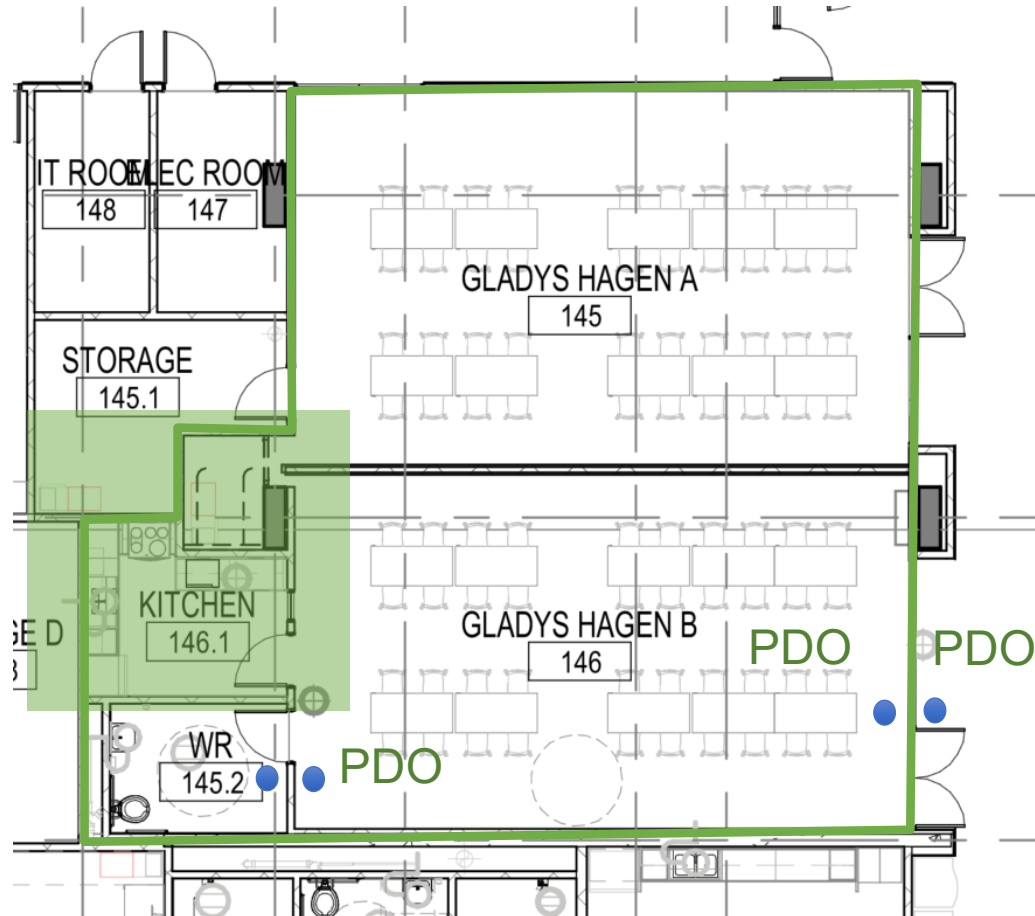
# Multi Purpose Rooms



- Seven (7) Multipurpose (MP) rooms of various sizes are available on the first and second floor
- The largest MP rooms are equipped with kitchenettes



# Multi Purpose Rooms – Gladys Hagen

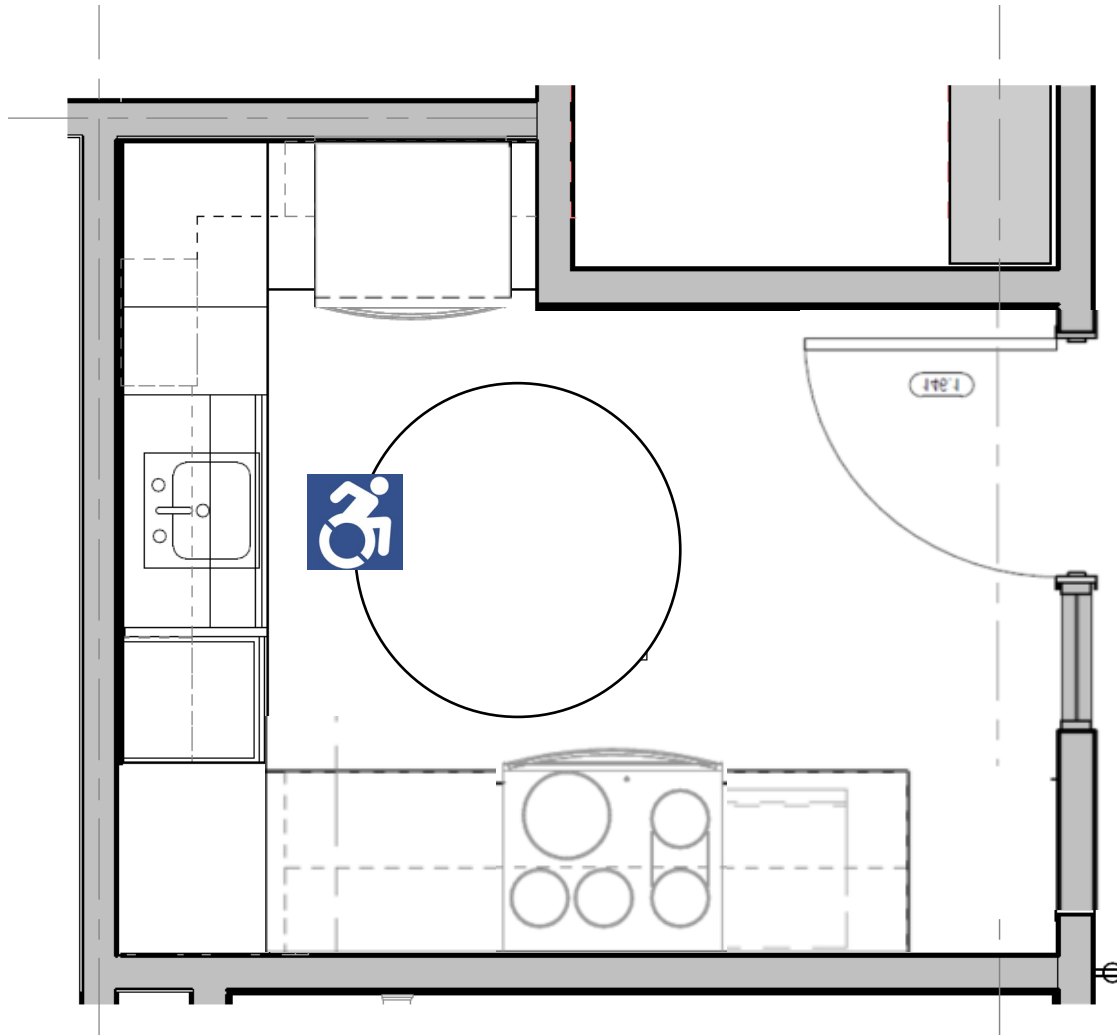


- Gladys Hagen MP room is one of seven MP rooms in the facility
- Designed to accommodate Seniors Groups and Seniors Programs
- Located on the Ground Floor, and has a dedicated barrier free washroom and kitchenette

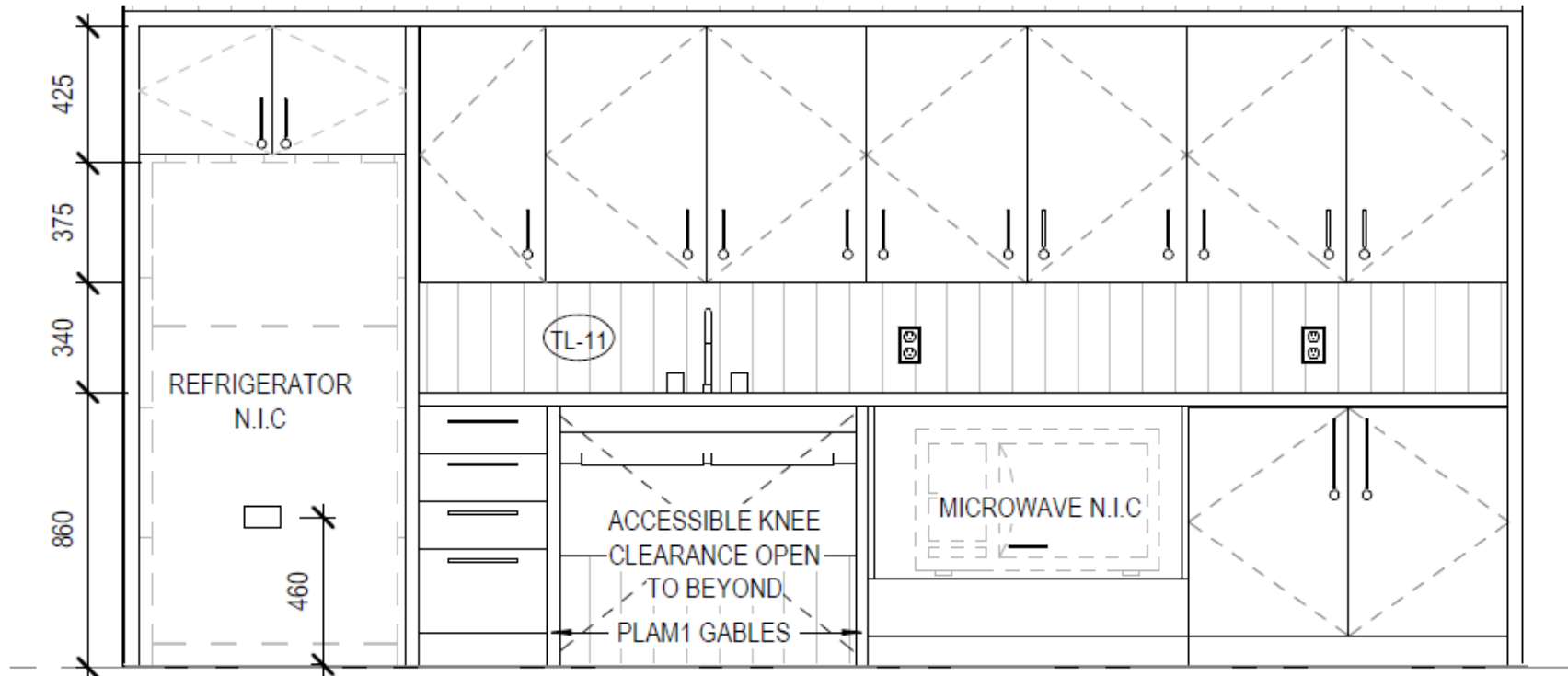


# Gladys Hagen - Kitchenette

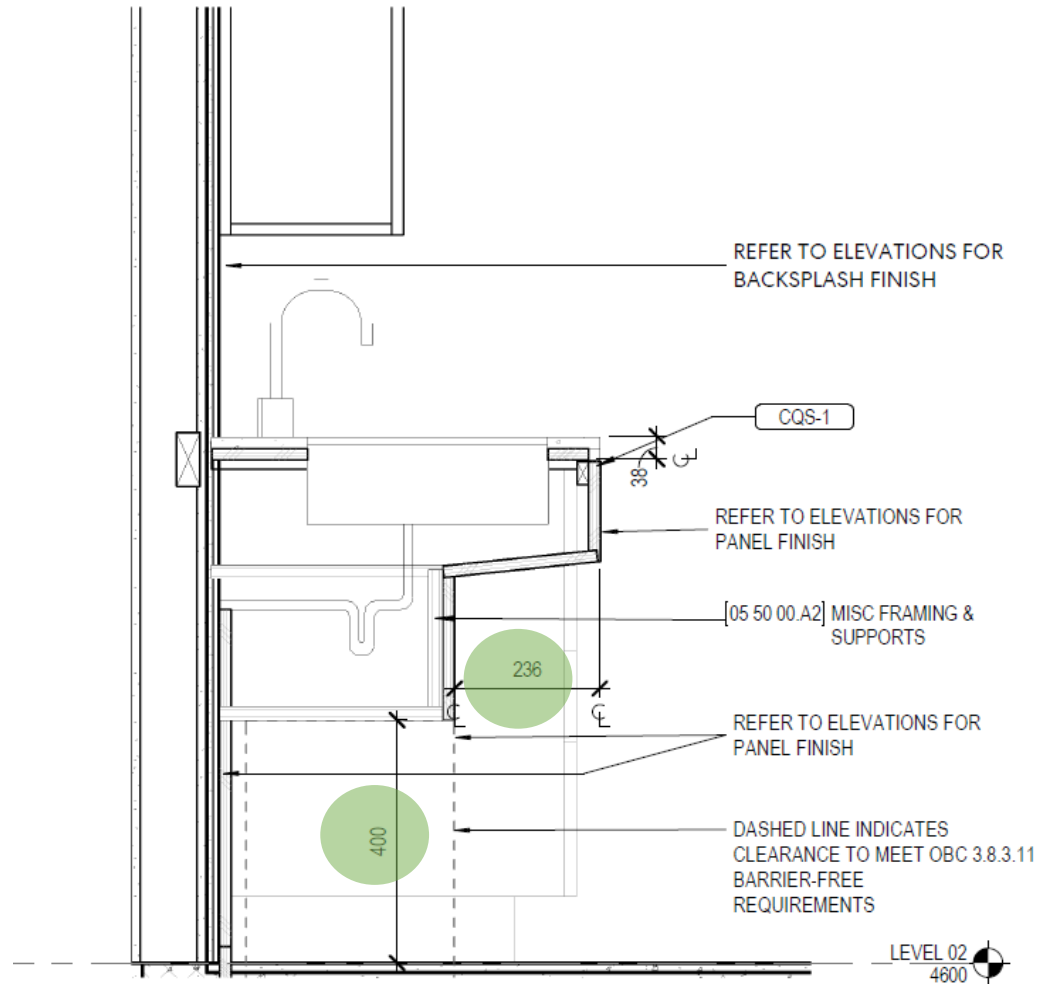
- Kitchenette can accommodate a 1500 mm turning radius
- Accessible knee clearance at sink
- Contrasting colour will be provided between the floor (dark) and all millwork kitchenettes (white)



# Sample Kitchenette Elevation

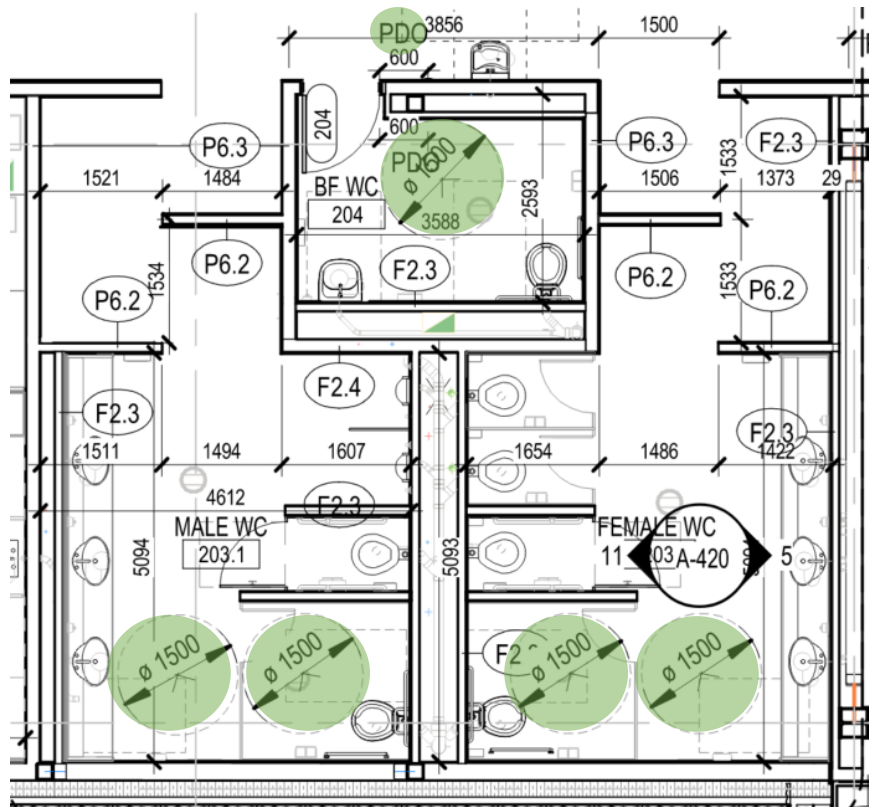


# Sample Section at Kitchen Sink





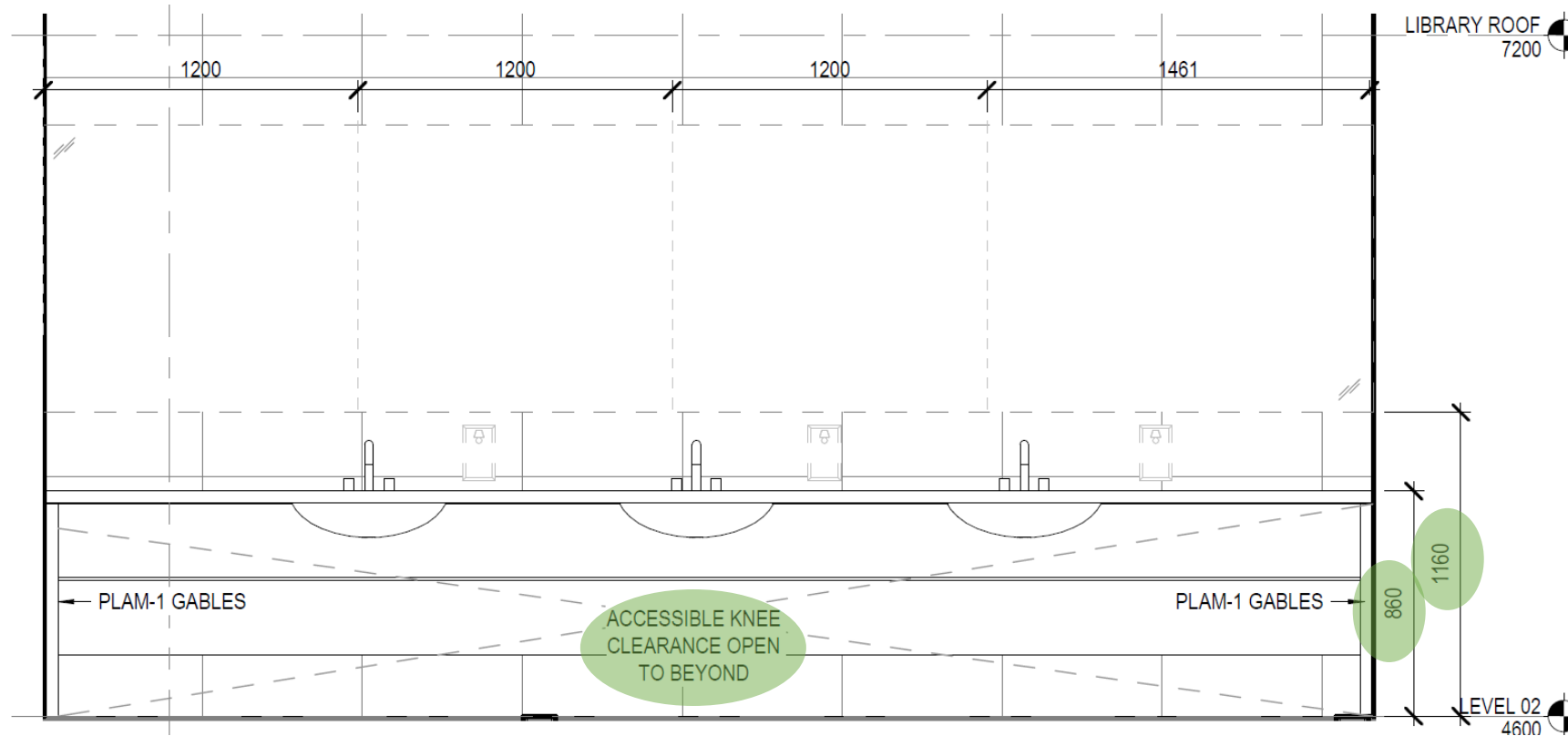
# Multi-Stall Public Washrooms



- 10% of washroom stalls to be ambulatory-- Grab bars (both sides) will be provided in 10% of regular stalls in each multi-stall WR
- No doors leading into multi-stall public washrooms



# Washroom Sink



# Aquatics Changerooms



- 18 showers are provided of which 7 are accessible
- All accessible showers are within an accessible change room
- Multiple Height showers will be provided along shower wall (1400mm and 1825mm AFF)—3 lower heads will be provided.



**Thank you!**

