



Corporate Report

Clerk's Files

Originator's
Files

HAC

DATE: October 16, 2009

TO: Heritage Advisory Committee
Meeting Date: October 27, 2009

FROM: Paul A. Mitcham, P.Eng, MBA
Commissioner of Community Services

SUBJECT: **Proposed Addition to the Heritage Register**
“Vision ‘62,” 1352 Nocturne Court
(Ward 2)

RECOMMENDATION: That “Vision ‘62,” 1352 Nocturne Court, be listed on the City’s Heritage Register for its physical/design, historical/associative and contextual value and that the appropriate City officials be authorized and directed to take the necessary action to give effect thereto.

BACKGROUND: G.S. Shipp & Son Limited built the house at 1352 Nocturne Court in 1962. Just a few weeks prior to its erection at this site, it had been showcased at the National Home Show in Toronto. There, 60,000 people toured the prefabricated structure, which stood within the Coliseum building.

The dwelling was Toronto architect Harry B. Kohl’s (1923-1973) “vision of the future.” Kohl’s round house defies convention. He thought circles accommodated the circulation of people better than rectilinear shapes. This was not Kohl’s only round residence. He also designed the circular rest stops that survive along Highway 401. Kohl’s house designs were featured at the Home Show from 1962 to 1969.

The focal point of “Vision ‘62” is the balcony-encircled rotunda. This circular area originally contained the living room, kitchen and dining area. A triodetic dome tops the structure. To the rear, an arc shaped

bungalow mimics the curve of the circle. This tail held three bedrooms with bathrooms and was faced with sliding glass doors. A bridge connects these two segments and contained a family room.

“Vision ‘62” was conceived as a dream house. The accompanying brochure stressed the “sheer delight and freedom” that it offered the “space-age family.” The residence epitomizes Modern architecture and its utopian aspirations. With its Modern design and experimental nature, “Vision ‘62” is representative of the suburban quest for ideal living. Wolfgang Kubetschek purchased the property in 1963.

COMMENTS:

According to Section 27.1.2 of the *Ontario Heritage Act*, property that “the municipality believes to be of cultural heritage value or interest” may be included on its Heritage Register.

Physical/Design Value

“Vision ‘62” is a representative example of the mid twentieth century suburban quest for ideal living. It is a rare, and the earliest known surviving, round house in Mississauga.

Historical/Associative Value

The house yields information that contributes to an understanding of the 1960s’ interest in ideal Modern living. It also demonstrates the work of architect Harry B. Kohl.

Contextual Value

Located in a neighbourhood with other seemingly one-off examples of experimental Modern housing, the residence supports the character of the area.

FINANCIAL IMPACT: N/A

CONCLUSION:

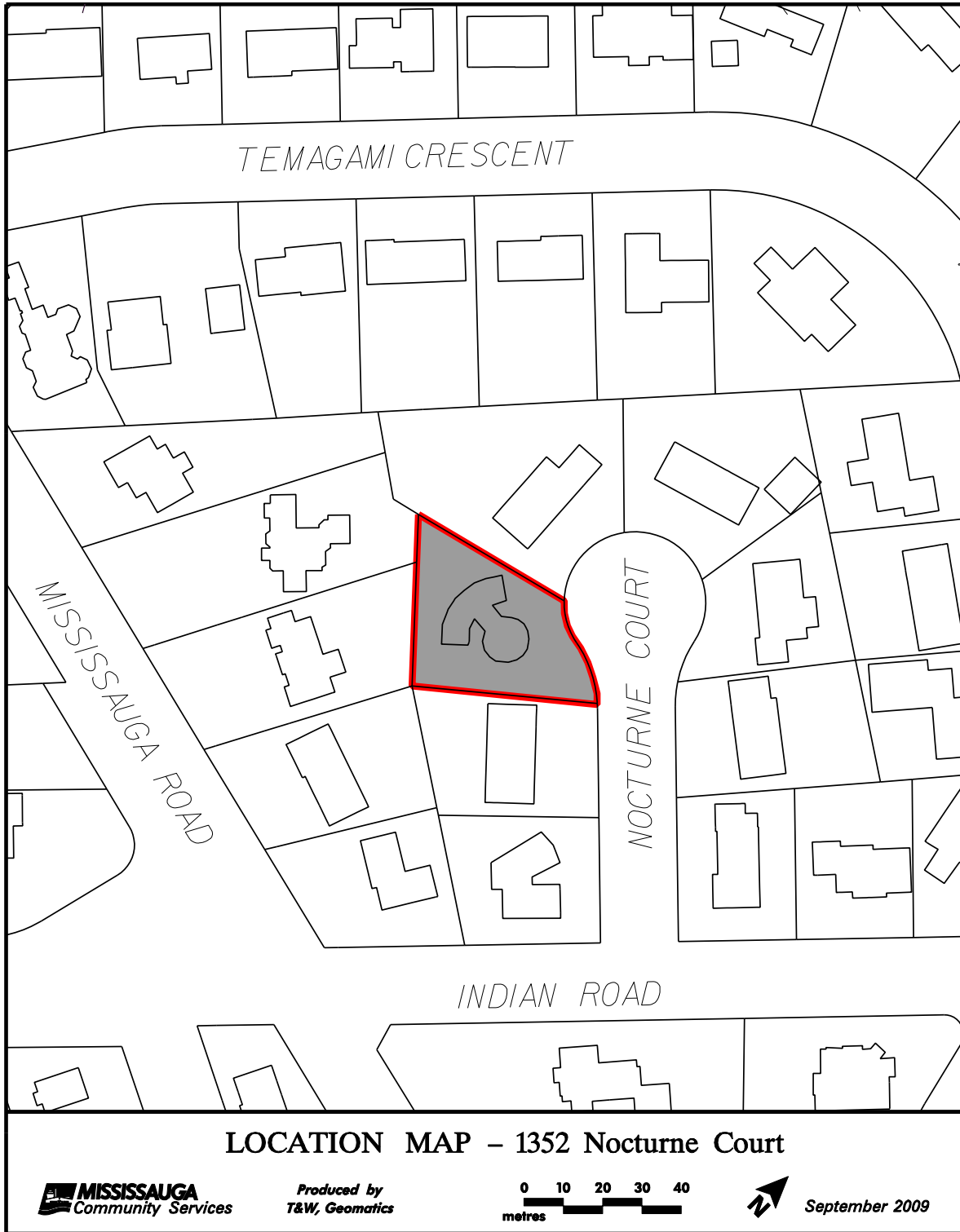
“Vision ‘62” epitomizes mid twentieth century Modern domestic architecture. It yields information that contributes to an understanding of the 1960s’ culture that produced experimental housing. It is a rare round house in Mississauga and it supports the character of the area, which includes a wide array of unique domestic architecture. For these reasons it merits listing on the City of Mississauga’s Heritage Register.

- ATTACHMENTS:**
- Appendix 1: Location Map of 1352 Nocturne Court
 - Appendix 2: Photos of “Vision ‘62,” 1352 Nocturne Court

Paul A. Mitcham, P.Eng, MBA
Commissioner of Community Services

Prepared By: Mark Warrack, Senior Heritage Coordinator

Appendix 1



Appendix 2: Photos of “Vision ‘62”



Aerial photo of 1352 Nocturne Court, 2006.



1352 Nocturne Court, September 2009.

Appendix 2: Photos of “Vision ‘62”



1352 Nocturne Court, September 2009.



1352 Nocturne Court, September 2009.