

# 2023 Mississauga Employment Survey and Business Profile

Planning and Development Committee  
June 25, 2024

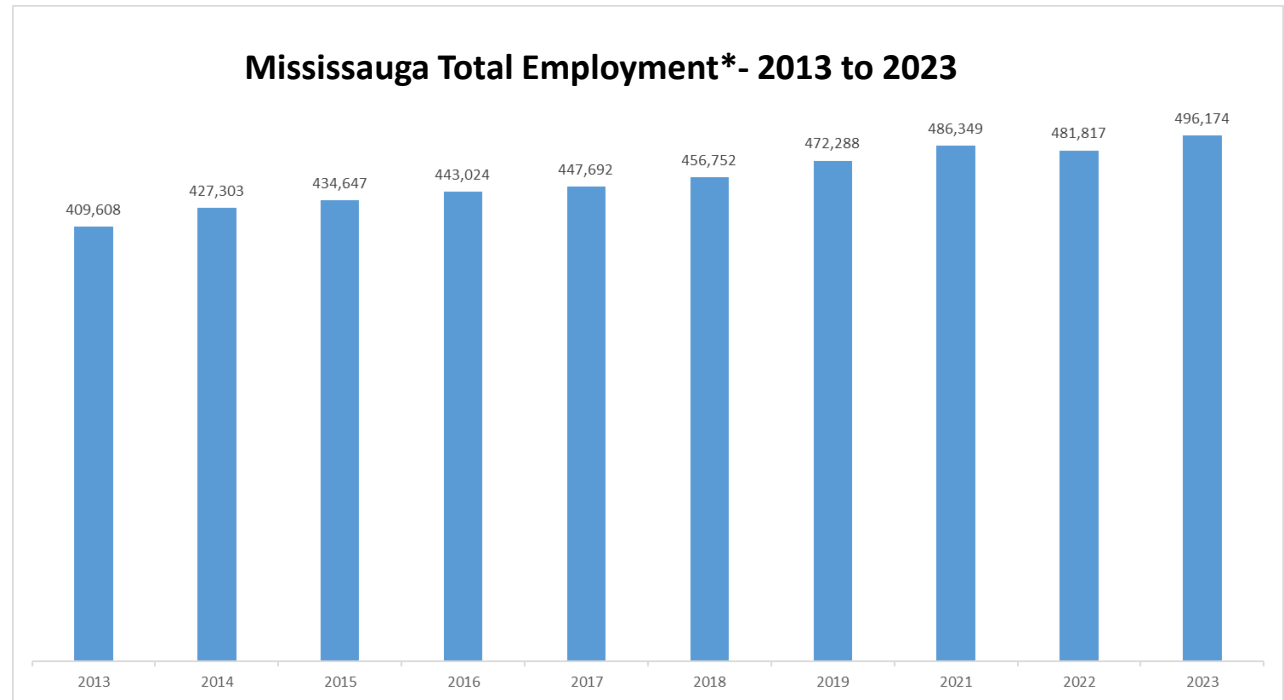
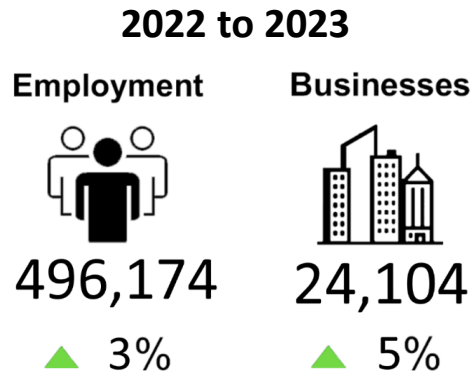


# Overview

- Mississauga Employment Survey has been conducted since 2001
- All types of businesses are included within the survey, except for home-based businesses
- Involves field verification and in-person or telephone surveys
- Results provide a comprehensive profile of the City's business community and its employees
- Data collected helps monitor economic conditions and employment across the city



# Mississauga has seen a steady increase in total employment

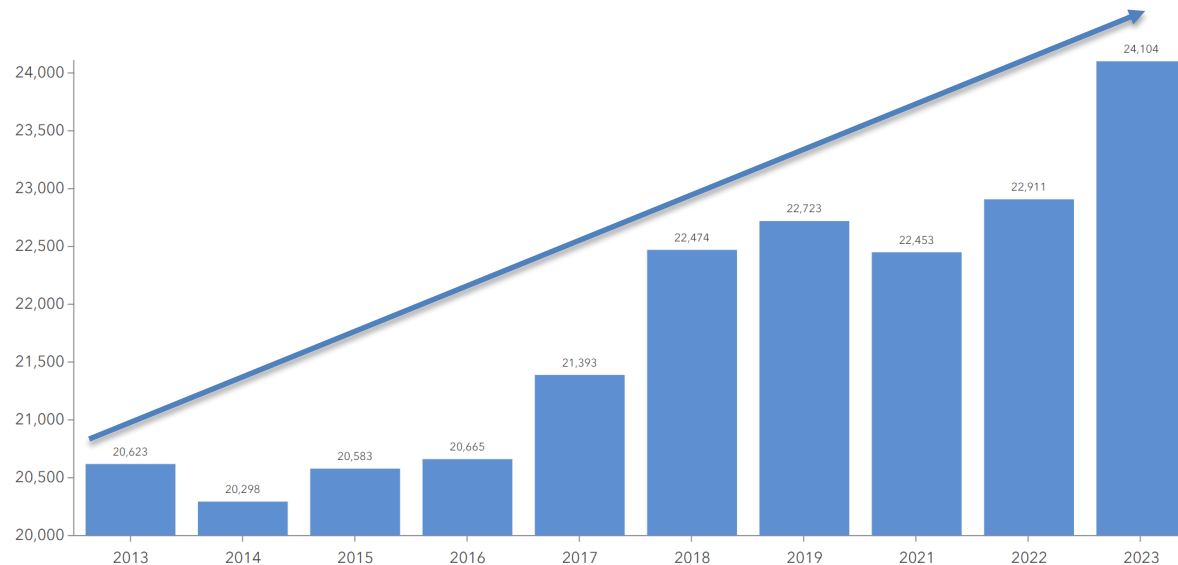


Average 2% yearly increase in Employment (~9,600/year)

*\*Mississauga's Employment Survey does not include home based businesses*

# Steady increase in the number of businesses

- Number of businesses increased from 20,623 in 2013 to 24,104 in 2023
- In 2023, approximately 70% or 346,000 jobs are full-time; this represents a 1% increase in full-time jobs year over year.
- 75%\* of the employees were working from the workplace



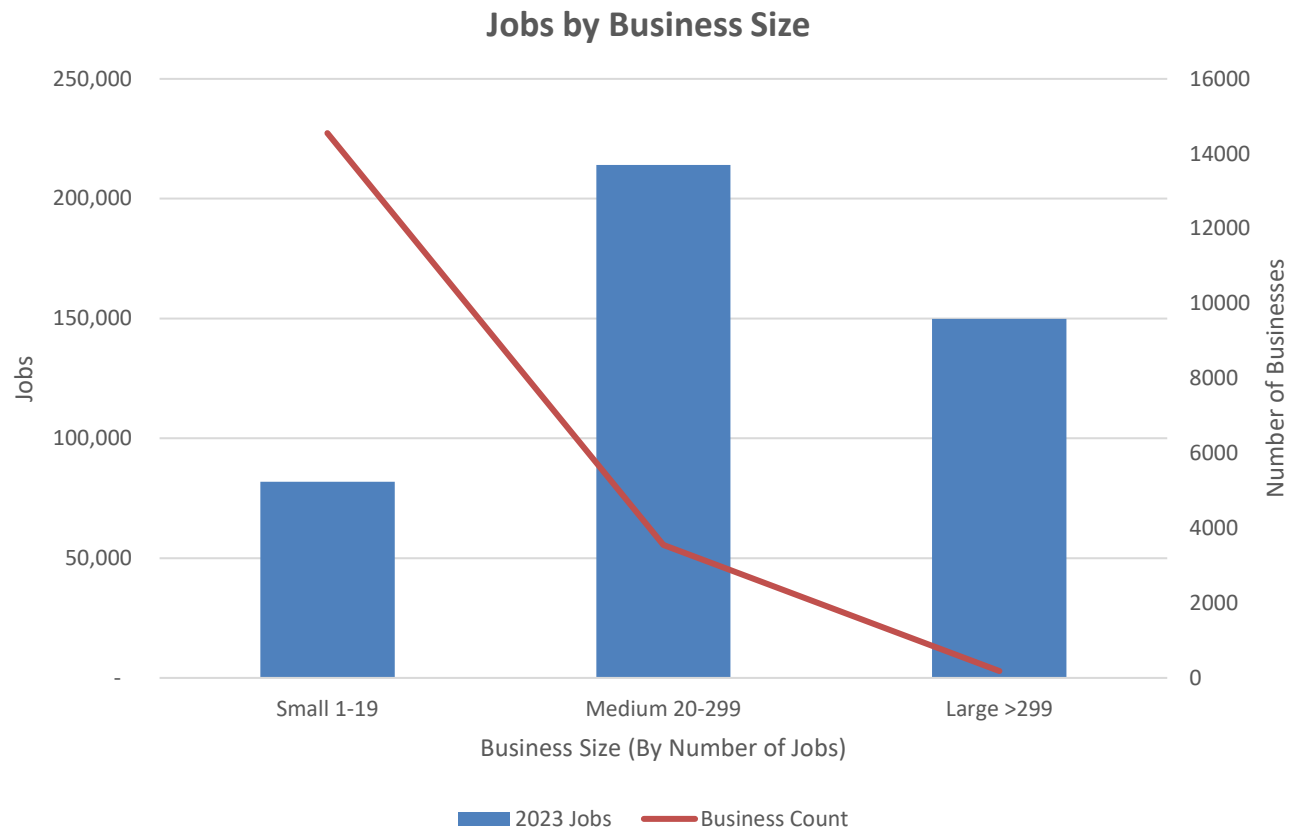
**Number of businesses in Mississauga (2013 to 2023)**

\*Based on 49% of businesses that answered the work arrangement questions

# Mid and large businesses provide the largest share of jobs

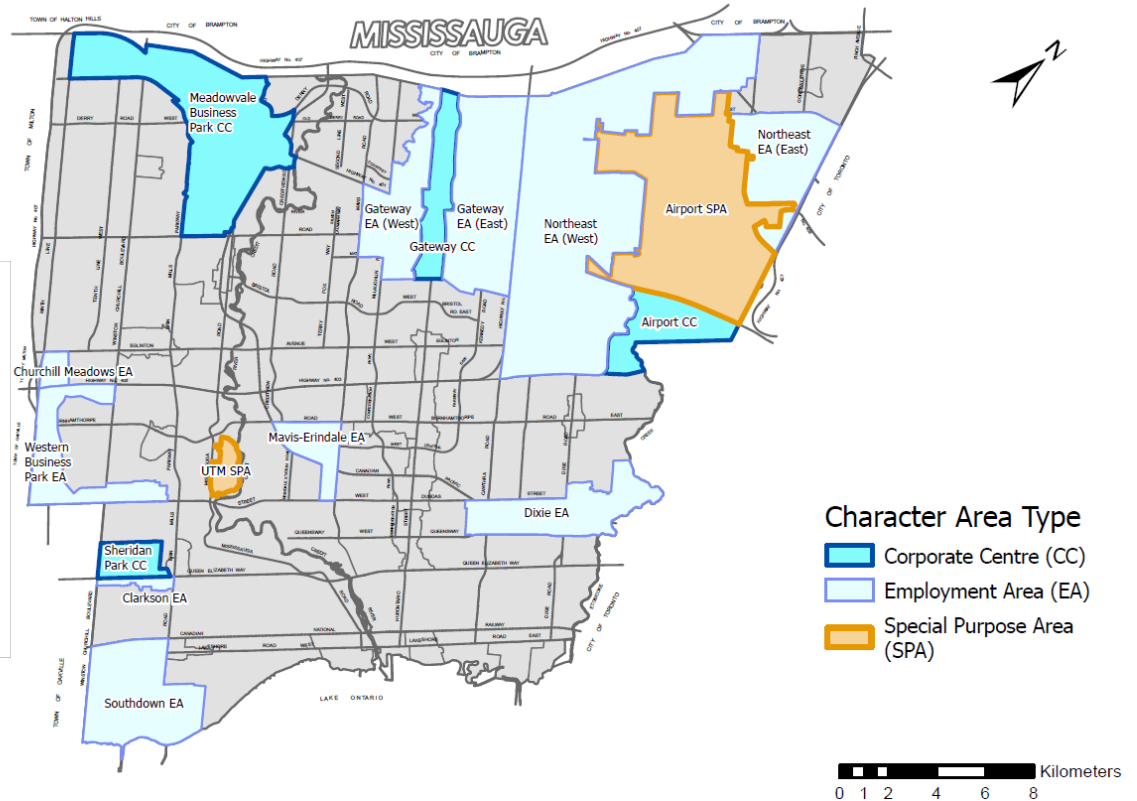
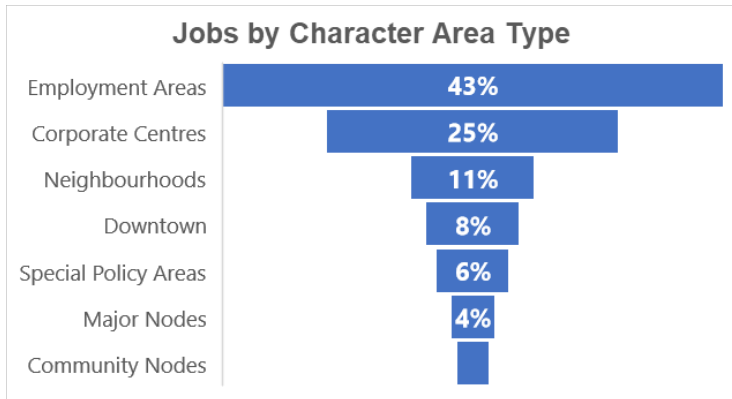
**80%** of businesses have less than 20 employees (exc. home-based)

However, **82%** of jobs are in mid and large size businesses (20 or more employees)



# Three quarters of Mississauga's jobs located in Employment Areas and Corporate Centres

This trend has remained consistent in Mississauga over the last decade

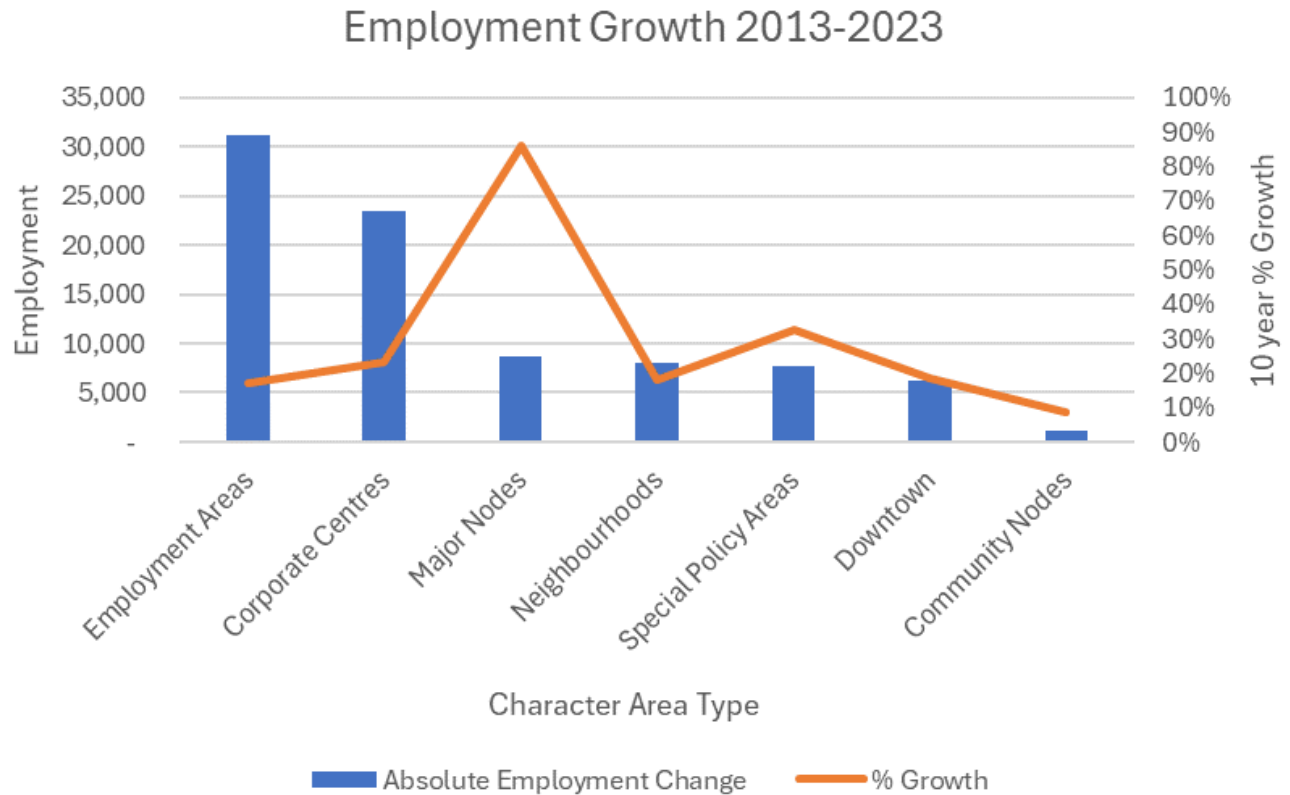


# Job growth has been strongest in Employment Areas

Since 2013:

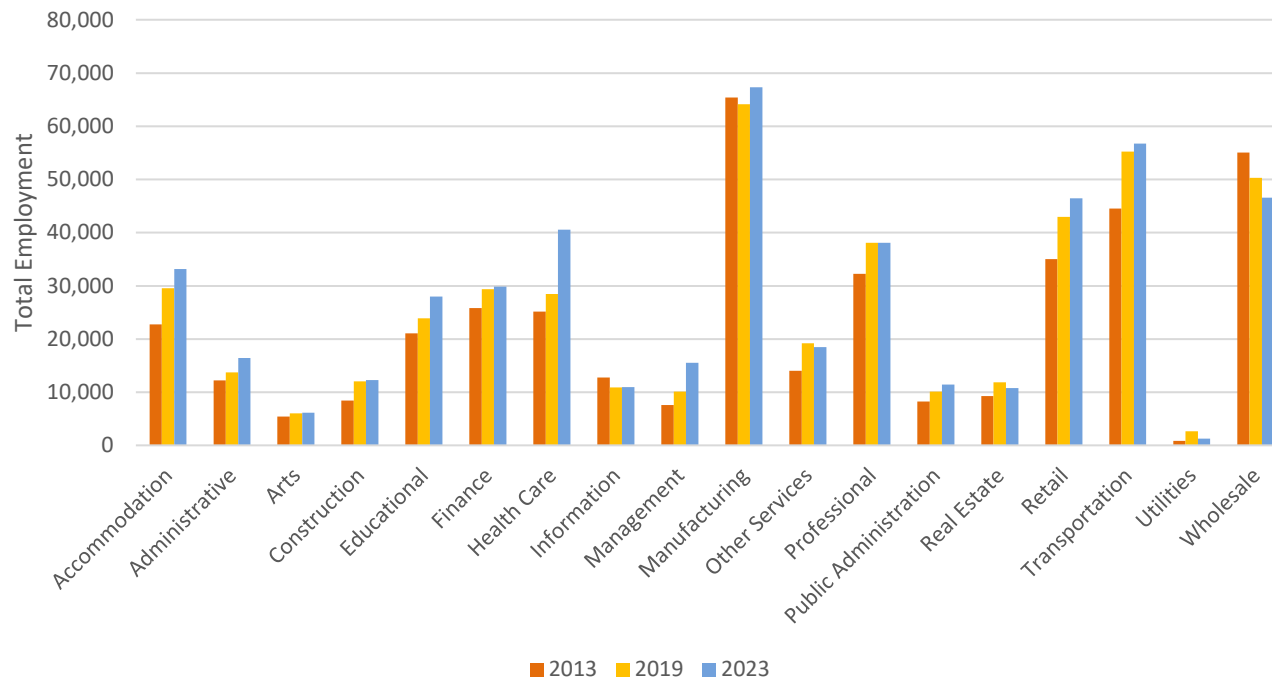
Job growth has been most pronounced in the city's traditional Employment Areas and in Corporate Centres, particularly:

- Northeast Employment Area (West) (adding ~12,300 jobs)
- Meadowvale Business Park Corporate Centre (~11,600 jobs), and
- Gateway Corporate Centre and Airport Special Purpose Area (adding ~7500 jobs, each).



# Mississauga supports a diverse economy

Mississauga's largest employment sectors are manufacturing (14% of employment), transportation and warehousing (11% of employment), and wholesale trade and retail (9% of employment, each).



The results show alignments with the Economic Development Division's strategic priority sectors including advanced manufacturing, life sciences, and technology



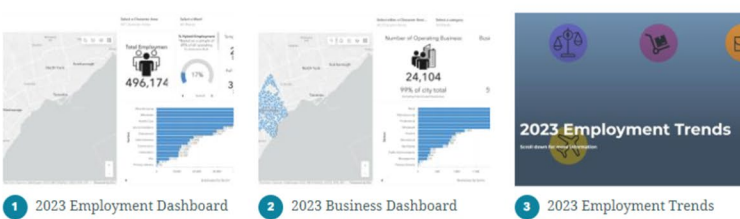
# Interactive Employment Profile

- The 2023 Survey results and data products have been published and are now live on the [City Planning Data Hub](https://city-planning-data-hub-1-mississauga.hub.arcgis.com/pages/employment)

Collection

## 2023 Employment Profile

Data + Visualization Studio Data + Visualization Studio



1 2023 Employment Dashboard    2 2023 Business Dashboard    3 2023 Employment Trends

**Get started** <https://city-planning-data-hub-1-mississauga.hub.arcgis.com/pages/employment>

City of Mississauga

### 2023 Mississauga Business Directory

Private Member  
City of Mississauga

Summary

The Mississauga Business Directory shows the geographic location of the businesses within Mississauga. It lists only the businesses that agreed to be included in the Business Directory.

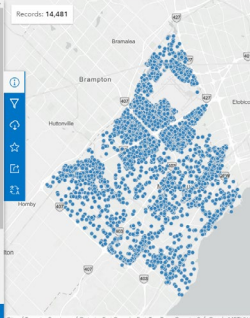
[View Full Details](#)

[Download](#)

Details

- Dataset: Feature Layer
- 14 March 2024 Info Updated
- 14 March 2024 at 00:00 Data Updated

[Point to use this](#)



[Open Data](#)

- Staff recently launched the 2024 Employment Survey and will continue to build an understanding of employment trends in the city.

# Thank you

Contact: [employment.survey@mississauga.ca](mailto:employment.survey@mississauga.ca)