



The Peter Gilgan Mississauga Hospital

Noise Control Exemption Request

Deputation to the City of Mississauga
General Committee

June 19, 2024

Trillium Health Partners: who we are

A 1450+ bed hospital network, made up of main hospitals and seven satellite sites:

- Credit Valley Hospital
- Mississauga Hospital
- Queensway Health Centre

Regional programs: Cancer, Cardiac, Chronic Kidney Care, Complex Continuing Care, Genetics, Geriatric Services, Maternal-Child, Neurosurgery, Palliative, Vascular

We care for you at every stage of life.

Proudly serve one of the most diverse communities in the world.



The Peter Gilgan Mississauga Hospital

- A modern health care facility to meet the growing needs of the community.
- New and expanded Emergency Department
- More beds means reducing wait times and the number of patients receiving care in a hallway.
 - 24 storeys
 - 2.8 million square feet
 - Over 950 beds
 - Over 100% private rooms
 - 23 operating rooms, an increase from 14
 - Emergency Department ~3x the size of current
- Create a health care experience that is inclusive, equitable, and accessible for all.

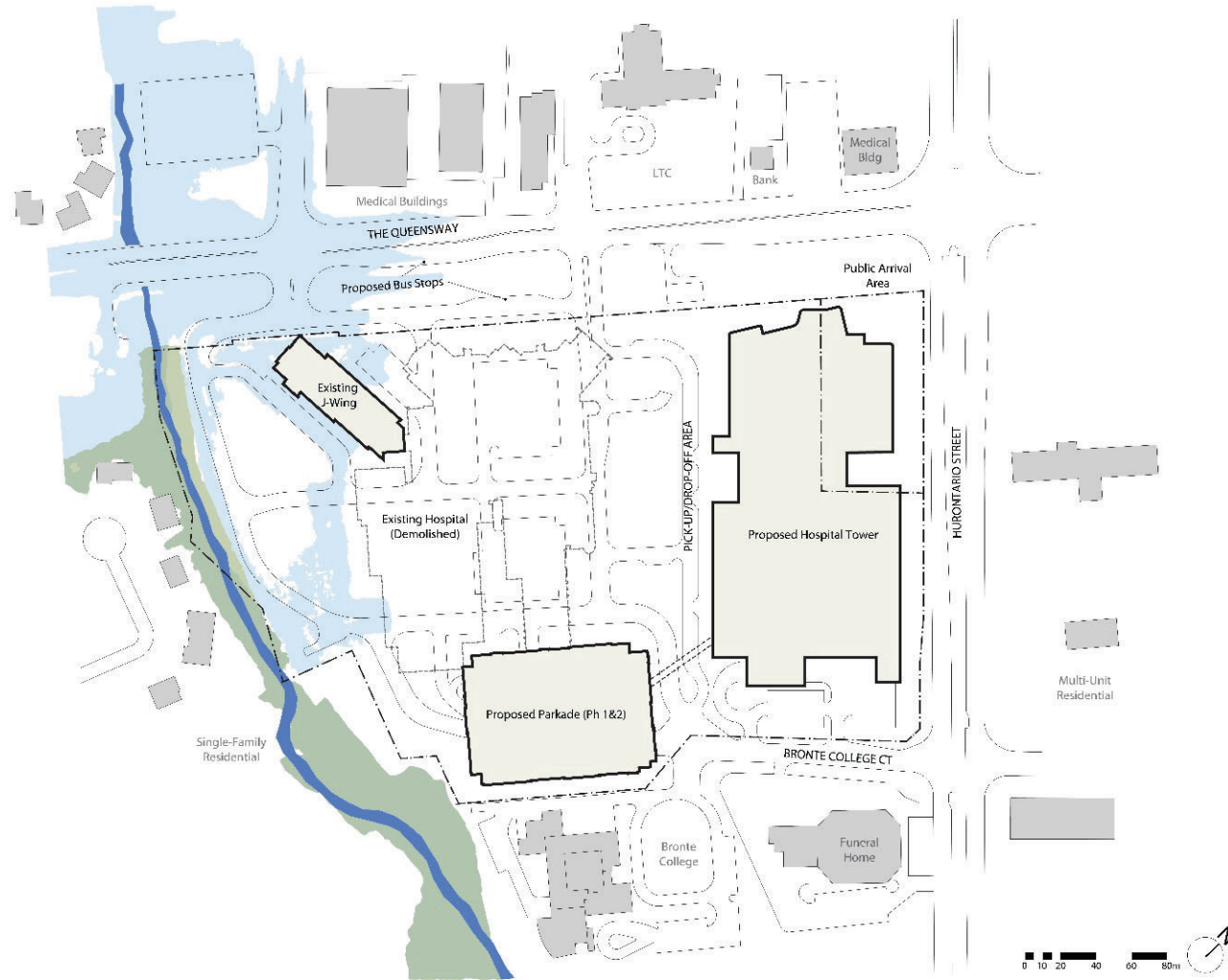
Early Works projects underway with hospital construction start in 2025

3





New Mississauga Hospital Site Plan





Project Update

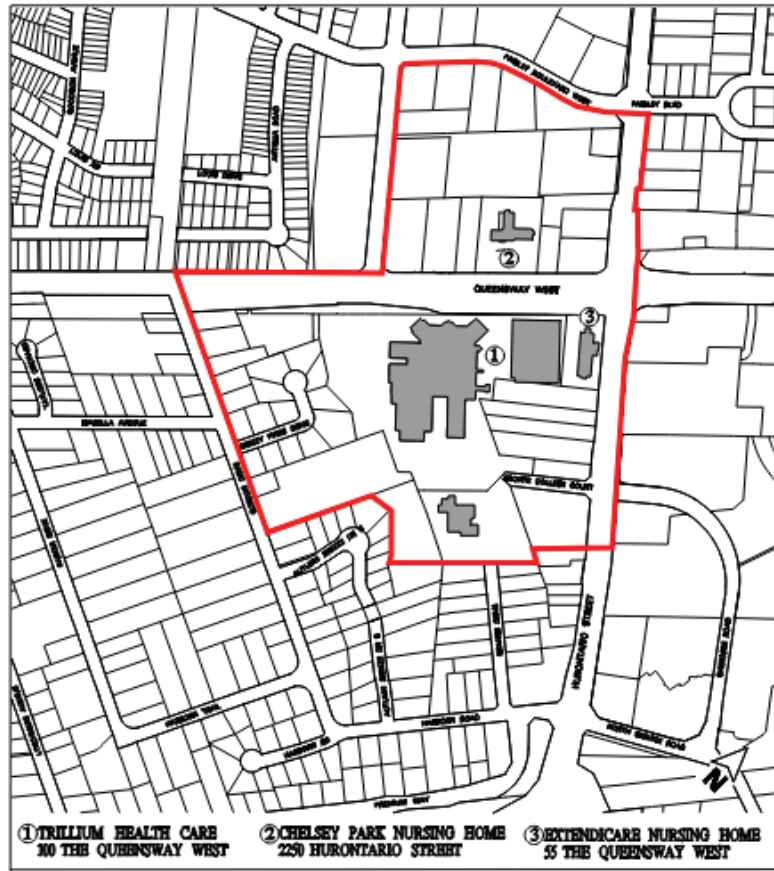
- The Peter Gilgan Mississauga Hospital is being built through Infrastructure Ontario's Progressive Design Build Finance Maintain model
- EllisDon-PCL Healthcare Partners (ED-PCL) was selected following issuance of a Request for Proposals in March 2023 to further develop project requirements and design, schedule, pricing and risk management
- Early works projects are underway including construction of a new parking garage and demolition of existing buildings
- Prior to proceeding to construction start of the new hospital in 2025, Trillium Health Partners and Infrastructure Ontario will enter into a Project Agreement with ED-PCL

Noise Exemption Request

ED-PCL, on behalf of Trillium Health Partners, are requesting an exemption from the City of Mississauga's Noise By-law to support the construction of The Peter Gilgan Mississauga Hospital. The benefits of an exemption include:

- **Construction Schedule** – planning and execution of the work for a project of this complexity and size must maximize work shifts to allow for the efficient volume of people (staff and workers), materials and timing of supplies that will be required daily
- **Certainty** – ability to provide subtrades with a consistent schedule and scope of work to achieve competitive bids
- **Budget** – costing can be established based on a schedule that takes the exemption in consideration
- **Safety** – provides the team with the ability to plan work accordingly while maintaining and improving the safety environment for staff and workers
- **Traffic Management** – flexibility to manage the workers' access to the project site will provide the workers more time to enter and set up for the multiple work shift starts, in addition to alleviating traffic congestion on The Queensway and Hurontario providing better access to the hospital emergency services
- **Communication** – ability to develop communications to patients, families, staff, the community and City of Mississauga regarding works much earlier

Current Noise Bylaw



ITEM	COLUMN 1 Prohibited Acts	COLUMN 2 Prohibited Periods of Time	
		Quiet Zone	Residential Area
5.	The operation of any construction equipment in connection with construction.	5:00 p.m. of one day to 7:00 a.m. the next day All Day Sundays and Statutory Holidays	7:00 p.m. of one day to 7:00 a.m. the next day All Day Sundays and Statutory Holidays

Prohibited Period –5:00pm to 7:00am, All Day Sunday and Statutory Holidays

Quiet Zone –Outlined in RED on Map

Construction Activities

Unique Features

- Largest hospital build in Canadian history, multi-phase construction project on a highly constrained, urban site
- Major transit corridor and site of an existing 24/7 operating hospital
- Estimated number of workers on site will range from 100 at start of construction to 3000 per day at construction peak
- Construction deliveries will be continuous and estimated range from 200 to 460 per day

Stages of Construction

- Construction stages will overlap to ensure efficient and continuous construction workflow
- Security on site, 24 hours per day, 7 days a week
- To accommodate the number of workers multiple shifts will be run at various stages of the project.
- With the exception of overhead tower crane climbs, no major construction work is planned for Sundays or Statutory Holidays.
- Snow removal, storm water management and responding to any construction emergencies will be performed during this period if required.

Early Works - Underway

- Site preparation
- New parking garage construction
- Demolition of Clinical Administration Building, former Camilla Care Long Term Care Home

Stage 1: Foundation to Grade

- Major construction activities during this stage will include excavation, shoring and placement of concrete
- Anticipated activities to occur between the hours of 5:30 a.m. and 7:00 a.m. and from 5:00 p.m. to and 7:00 p.m. include:
 - Workers, equipment and materials assemble for start of work
 - Equipment such as excavators, dump trucks, tractor trailers, mobile cranes, material handling equipment (forklifts, boom trucks) and concrete pump trucks are active and in use
 - Tower crane erection and hoisting activities (p.m.)
 - Concrete placement and finishing may extend beyond 7:00 p.m.

Stage 2: Superstructure to Level 11

- The major construction activities during this stage will include forming, placement of reinforcing steel and concrete, exterior envelope, mechanical, electrical, and interior finishes.
- Anticipated activities to occur between the hours of 5:30 a.m. to 7:00 a.m. and 5:00 p.m. to 11:00 p.m. include:
 - Workers, equipment and materials assemble for start of work
 - Equipment such as tower cranes, hoisting equipment, mobile cranes, material handling equipment (forklifts, boom trucks) and concrete pump trucks are active and in use
 - Exterior precast installation (p.m.)
 - Re-enforcing steel, concrete placement, and finishing (p.m.). Concrete finishing may extend beyond 11:00 p.m.
 - Waste Management, load waste and hoist to grade

Stage 3: Superstructure, Interior and Remaining Works

- The major construction activities during this stage will include forming, placement of reinforcing steel and concrete, exterior envelope, mechanical, electrical, and interior finishes.
- Anticipated activities to occur between the hours of 5:00 a.m. to 7:00 a.m. and 5:00 p.m. to 11:00 p.m. include:
 - Workers, equipment and materials assemble for start of work
 - Equipment such as tower cranes, hoisting equipment, mobile cranes, material handling equipment (forklifts, boom trucks) and concrete pump trucks are active and in use
 - Exterior precast installation (p.m.)
 - Reinforcing steel, concrete placement, and finishing (p.m.) *Concrete finishing may extend beyond 11:00 p.m. if an issue arises*
- 12 – Waste Management, load waste and hoist to grade

Noise Mitigation

A Noise and Work Activity Management Program and Traffic Control Program will be in place during construction

- ED-PCL and THP will actively manage and approve work being performed outside existing Noise By-Law hours throughout the project
- Focus will be to minimize disruptions to hospital patients, visitors, staff, residents, and businesses in the area
- Reversing / Back Up Alarm – the beeping tonal alarm will be replaced with the quieter broadband signal
- Material Delivery Plan – software will be implemented to manage and plan just-in-time deliveries
- Dedicated Loading Dock – when possible, deliveries will be directed to the below grade loading docks that will be available at approximately 50% structural completion

Noise Mitigation Continued

- No idle restriction will be implemented
- Shoring piles will be placed into drilled holes and not driven
- Excavation equipment is equipped with ripping capabilities reducing noise from hammering
- Rock removal equipment will be equipped with factory installed dampers
- Crane overlap horns will be used only when necessary
- Strong radio communication to all equipment operation and perimeter flag persons
- Concrete pumping is planned for daytime operations. With afternoon/evening installations will be limited to placing exterior precast panel, equipment and material deliveries including hoisting
- Structural steel is planned for 7:00 a.m. to 7:00 p.m., reducing the sound associated with fitting steel and driving pins and bolt torquing beyond the hours above

Communication and Engagement

- As a public hospital open and transparent engagement with patients, families, staff, the community and City of Mississauga is important to all the work we do
- THP has engaged extensively across Mississauga and Etobicoke on the projects including with immediate neighbours, businesses and residents' associations
- Ensuring proper communication with key partners, including the direct community surrounding the new facility, is imperative to being a respectful and responsible corporate citizen
- THP, EllisDon and PCL have extensive experience in community engagement and management of questions and concerns
- We are committed to implementing a communications protocol to address all matters in a timely and thoughtful manner.

Communication and Engagement Plan Con't

- The communication protocol will include:
 - A dedicated phone number and e-mail address for questions, concerns or comments t
 - A triaged approach for responses to questions
 - Regular distribution of project progress and works will be available through the project team's media channels which will include a dedicated project webpage
 - Continued community engagement, including targeted sessions for local residents and surrounding neighbors through in person, virtual and tele-town halls
 - Broader Trillium HealthWorks engagement has reached over 11,500 individuals over the past two years.
 - We will establish a process with the City to manage incoming questions/concerns and to respond to all residents requests
- We will work with the City to regularly review processes and incorporate feedback into communications and engagement plan



**Thank you
for your support**

To learn more visit www.trilliumhealthworks.ca