

West Elevation



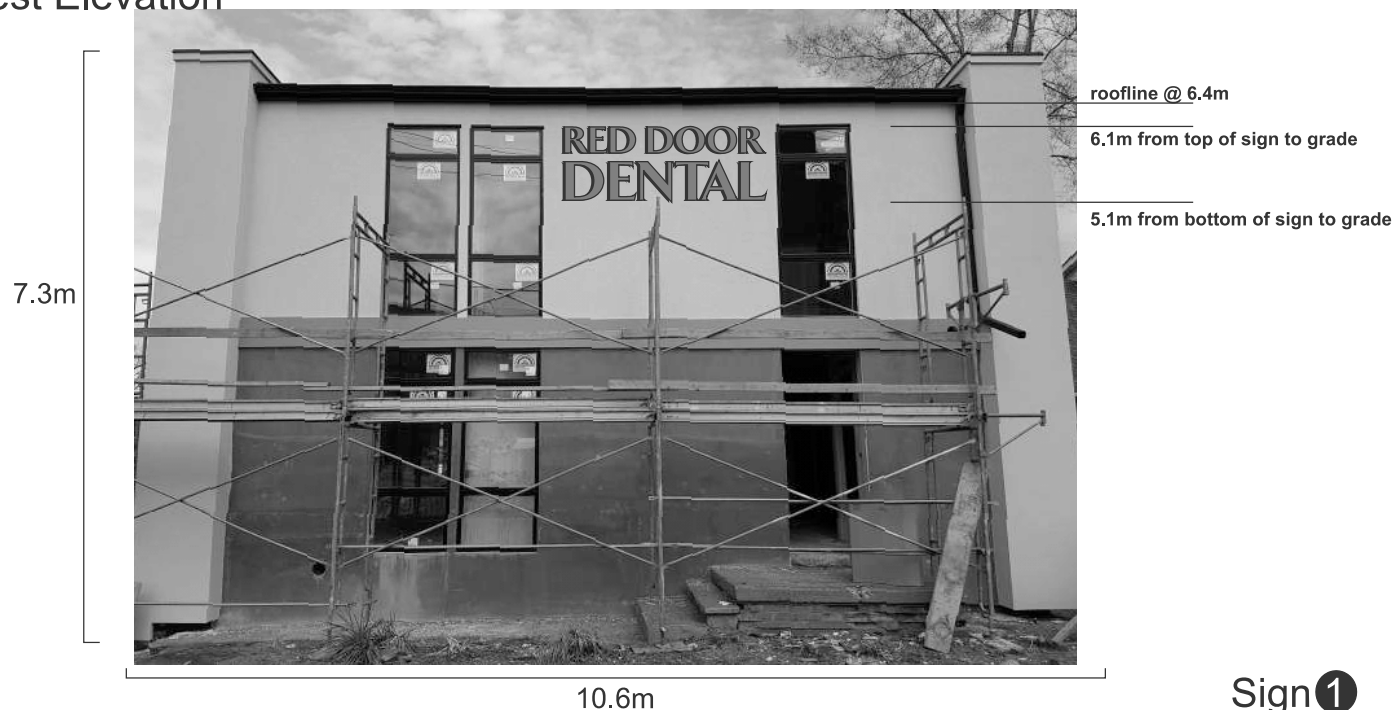
775 Pacific Rd. Unit 35 - Oakville, ON L6L 6M4  
TEL: 905.338.7446 FAX: 905.338.7437  
www.aboutsigns.ca vinyl@aboutsigns.ca

**SHOP DRAWING**

About Signs contact: Steve Crawford  
Designer: Diego Franz

Project Name: Red Door Dental  
Location: 3121 Hurontario St,  
Mississauga, ON L5A 2G9  
Date: April 26th 2017

Sign 1 West Elevation



S001-Elevation

Sign 1

Facade = 7.3m x 10.6m = 77.38m<sup>2</sup>  
Sign = 0.96m x 2.48m = 2.38m<sup>2</sup>  
Sign coverage = 3%