

Fire Stations 103 & 111 Additions FADS Committee Review October 28, 2024



CELEBRATE

Fire Station 103



CELEBRATE₂

Agenda

1. Background
2. Project scope and objectives
3. Review design
4. Questions, comments

Background

- Mississauga Fire & Emergency Services (MFES) has 10-year capital plan to renovate thirteen (13) fire stations across the City.

Objectives (summary)

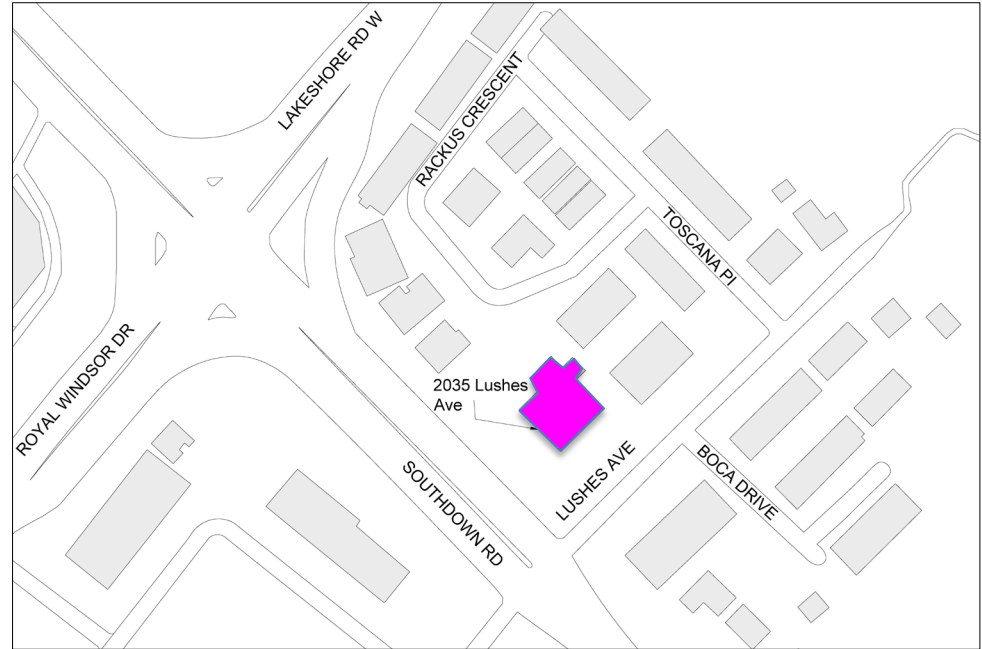
- upgrade to existing fire services station to accommodate current policies and regulations relating to fire services mandates
- Increase living spaces and improve adjacencies
- upgrades to public access

Project Scope (summary)

- demolish existing living quarters and build new;
- mechanical, electrical, structural upgrades;
- updates to signage including new pylon sign;
- selective site improvements throughout the site.

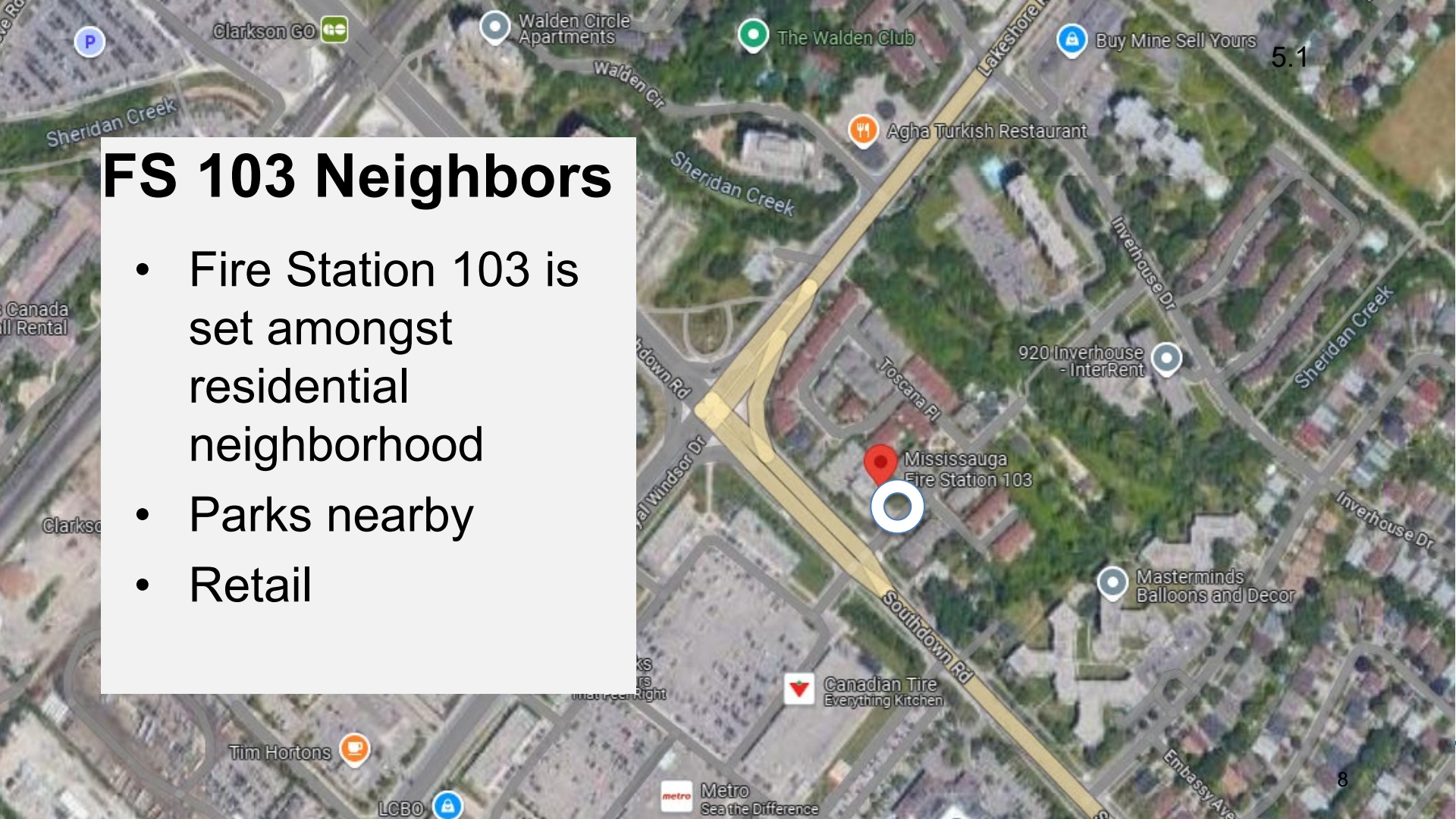
FS 103 Context

- 2035 Lushes Ave
- Lakeshore Rd. W. and Southdown Rd.
- Ward 2
- 1985



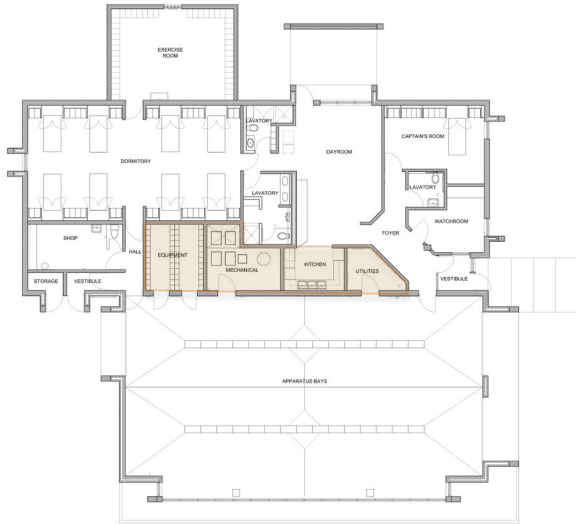
FS 103 Neighbors

- Fire Station 103 is set amongst residential neighborhood
- Parks nearby
- Retail

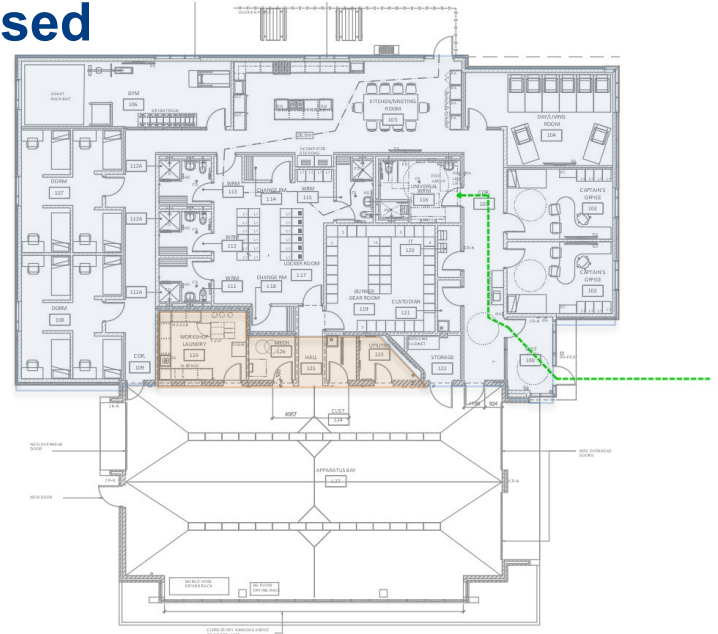


FS 103: Proposed Design

Existing

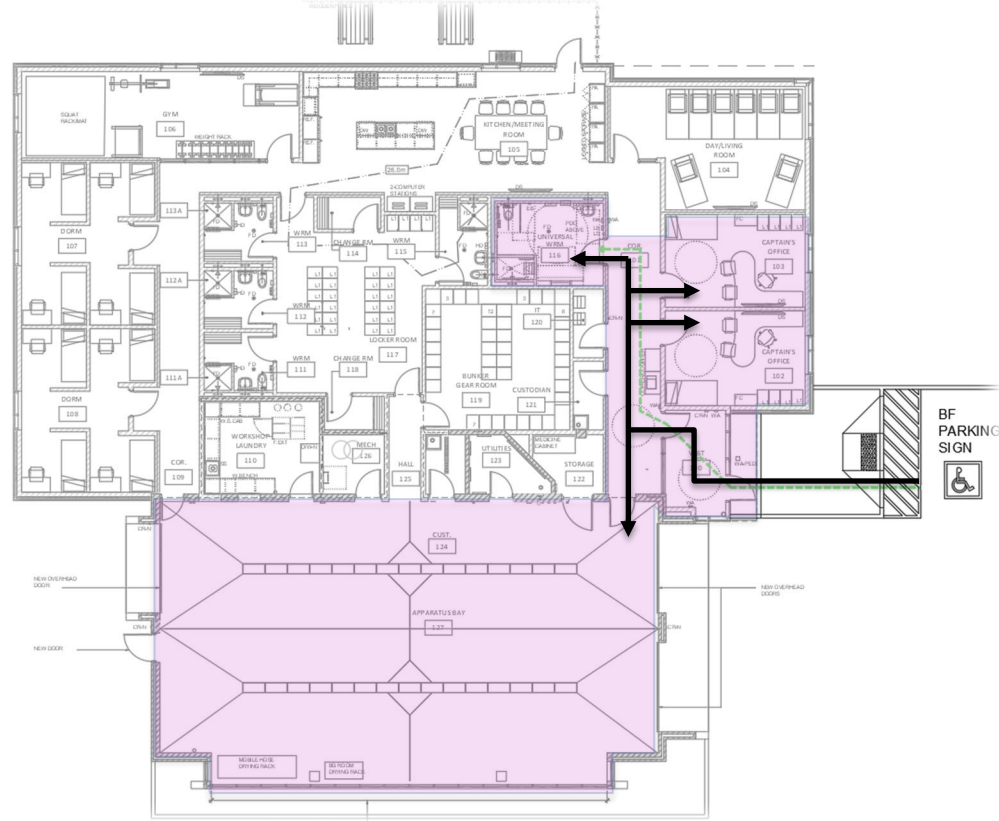


Proposed



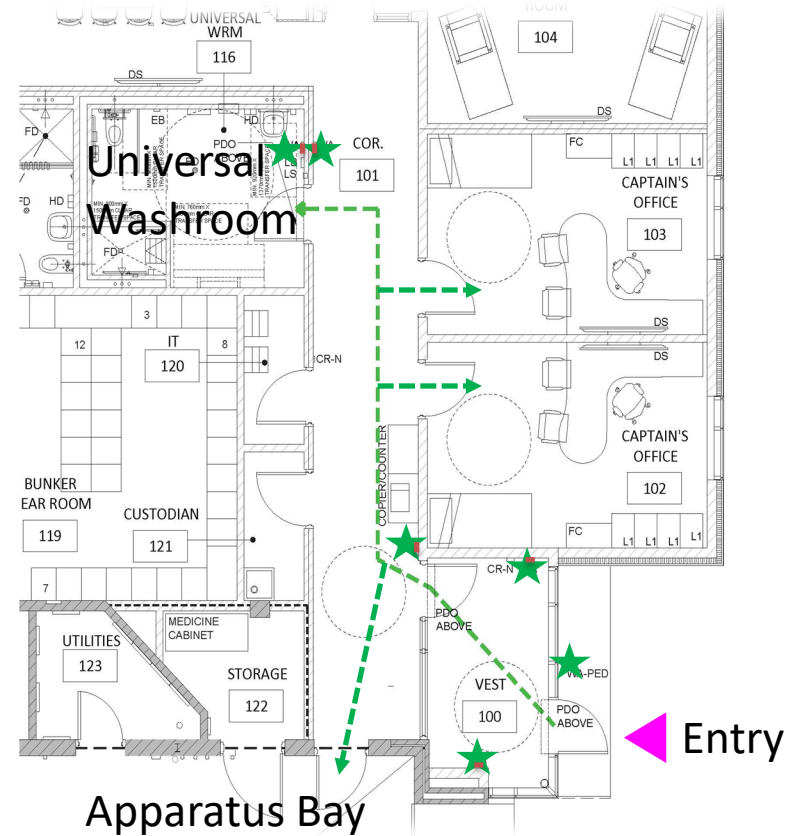
FS 103: Public Access

- Travel distance from accessible parking space to Universal Washroom = 20.5 m
- Corridor width = 2.1 m
- Turning circle diameter at Universal Washroom = 2.44 m



FS 103: Entrance and Universal Washroom

- Path of travel 13 m from entrance to Universal Washroom
- Automatic Door Operators (ADO)
- Turning radius clearances
- Provisions for a future motorized adult change table
- barrier-free accessories and clearances in washroom



FS 103: View from Lushes Ave



FS 103: View from Parking



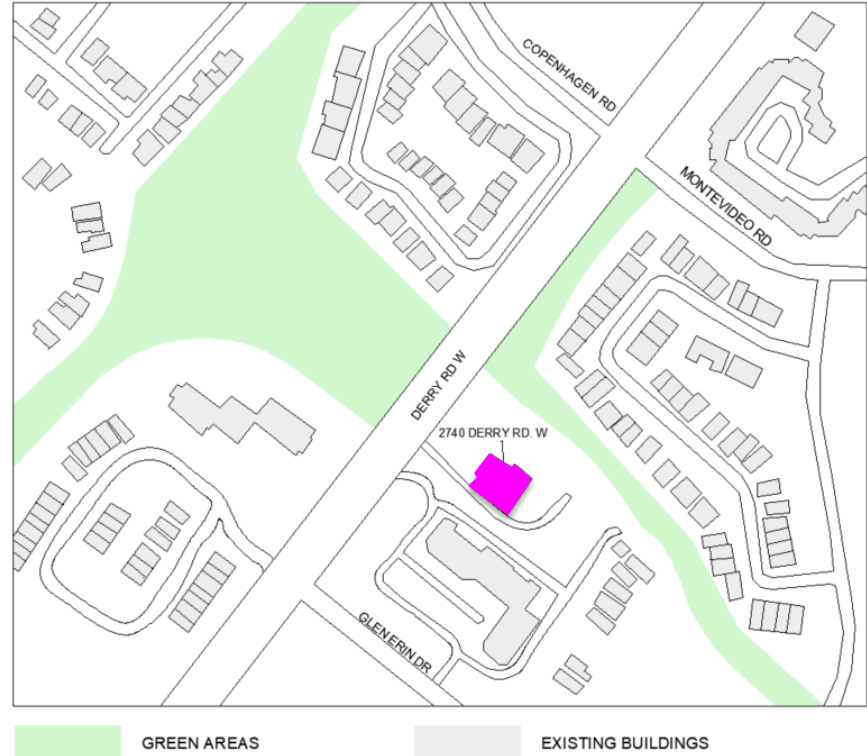
Fire Station 111



**CEL
E BR
ATE**
1
5

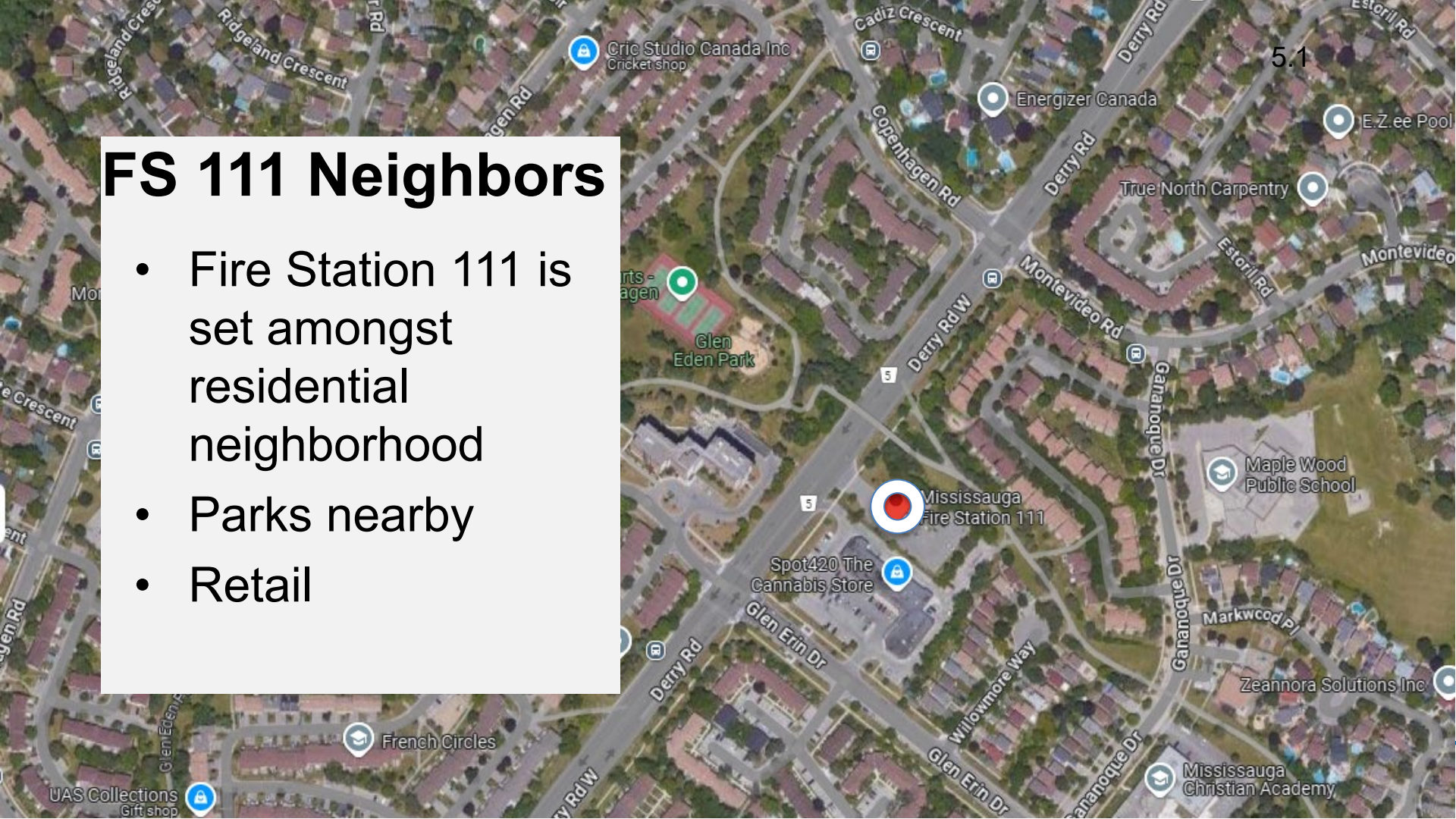
FS 111 Context

- 2740 Derry Rd W
- Derry Rd W and Winston Churchill Blvd
- Ward 9
- 1983

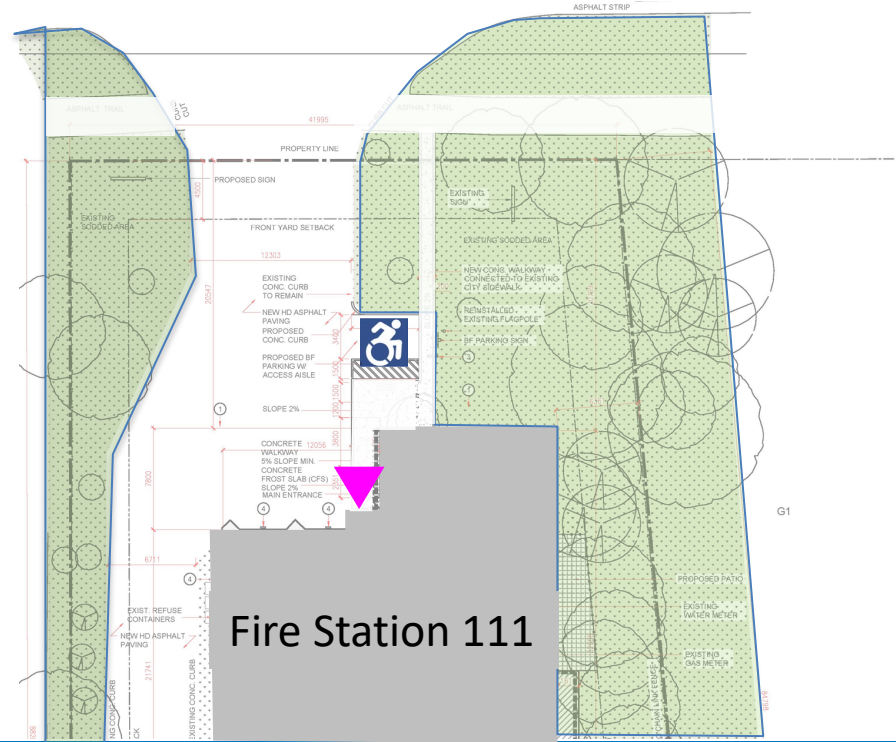


FS 111 Neighbors

- Fire Station 111 is set amongst residential neighborhood
- Parks nearby
- Retail



FS 111: Proposed Site Plan



Fire Station 111



Entry



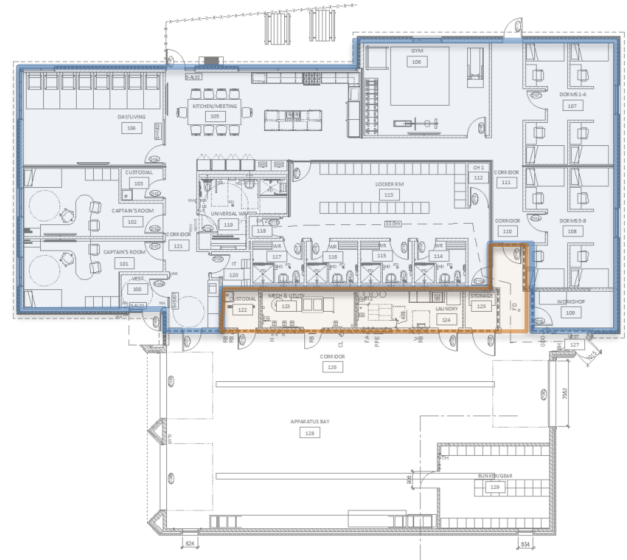
Barrier Free Parking

Fire Station 111 Proposed Design

Existing



Proposed



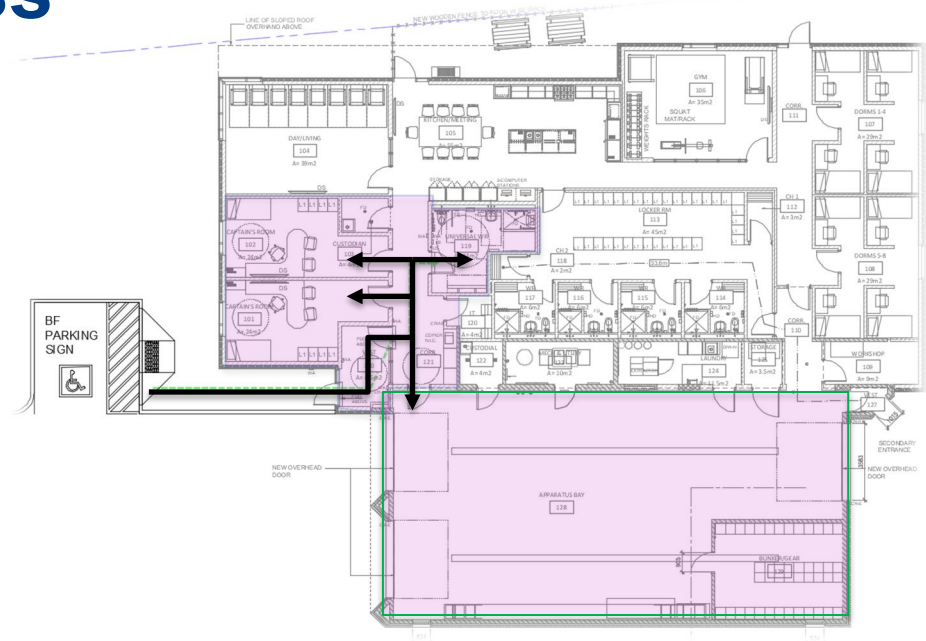
Renovation



New

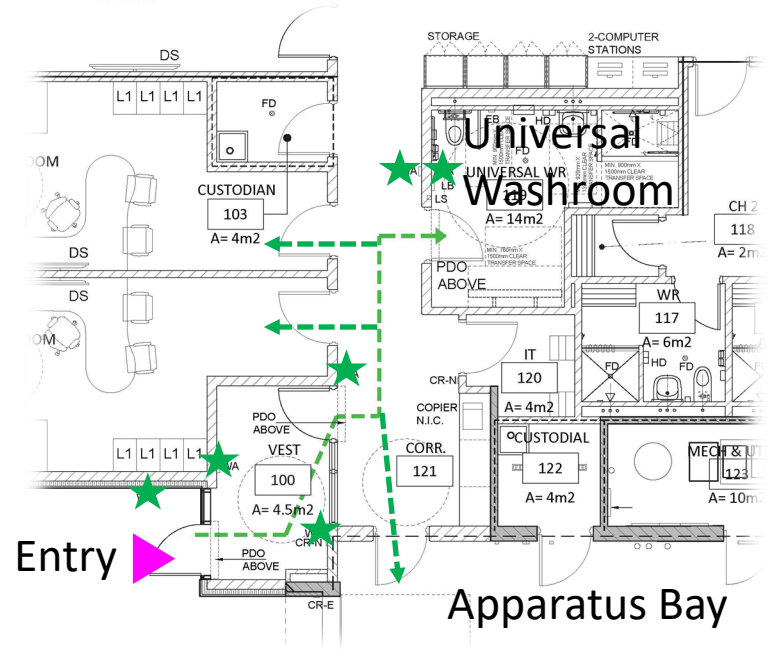
FS 111: Public Access

- Travel distance from accessible parking space to Universal Washroom = 18.6 m
- Corridor width = 1.7 m
- Turning circle diameter at Universal Washroom = 2.44 m



FS 111: Path of Travel

- Path of travel 8 m from entrance to Universal Washroom.
- Power Door Operators (PDO) and actuators (WA, WA-PED) are included on the entry doors and to the Universal Washroom door.
- Universal Washroom provides barrier-free fixtures and accessories with appropriate OBC clearances. It also provides space for a future motorized adult change table.
- Universal shower provided with barrier-free accessories and clearances.



FS 111: Design Update



FS 111: View from Parking



Fire Stations 103 and 111 Discussion

- Questions and comments

Thank you for taking the time to review this presentation

Parking Signage

