



MiWay Infrastructure Growth Plan (MIGP)

What Is It?

A strategic plan to direct the effective allocation of City of Mississauga investments to transit infrastructure.



Routes



Frequency



Service



Operating
Budget



Capital
Budget



Why do we need it?

Why?

Lack of supportive infrastructure and passenger amenities and constraints on operations

Where?

MiWay terminals and MiExpress stops

What?

Terminal locations, terminal infrastructure, stop infrastructure, transit priority applications

When?

Within the five to ten-year timeframe

Study Process

Key Tasks

**Background
Review**

What has been
done?

**Existing
Conditions**

What are the
issues?

**Infrastructure
Direction**

Where do we
want to go?

Opportunities

What can we
do?

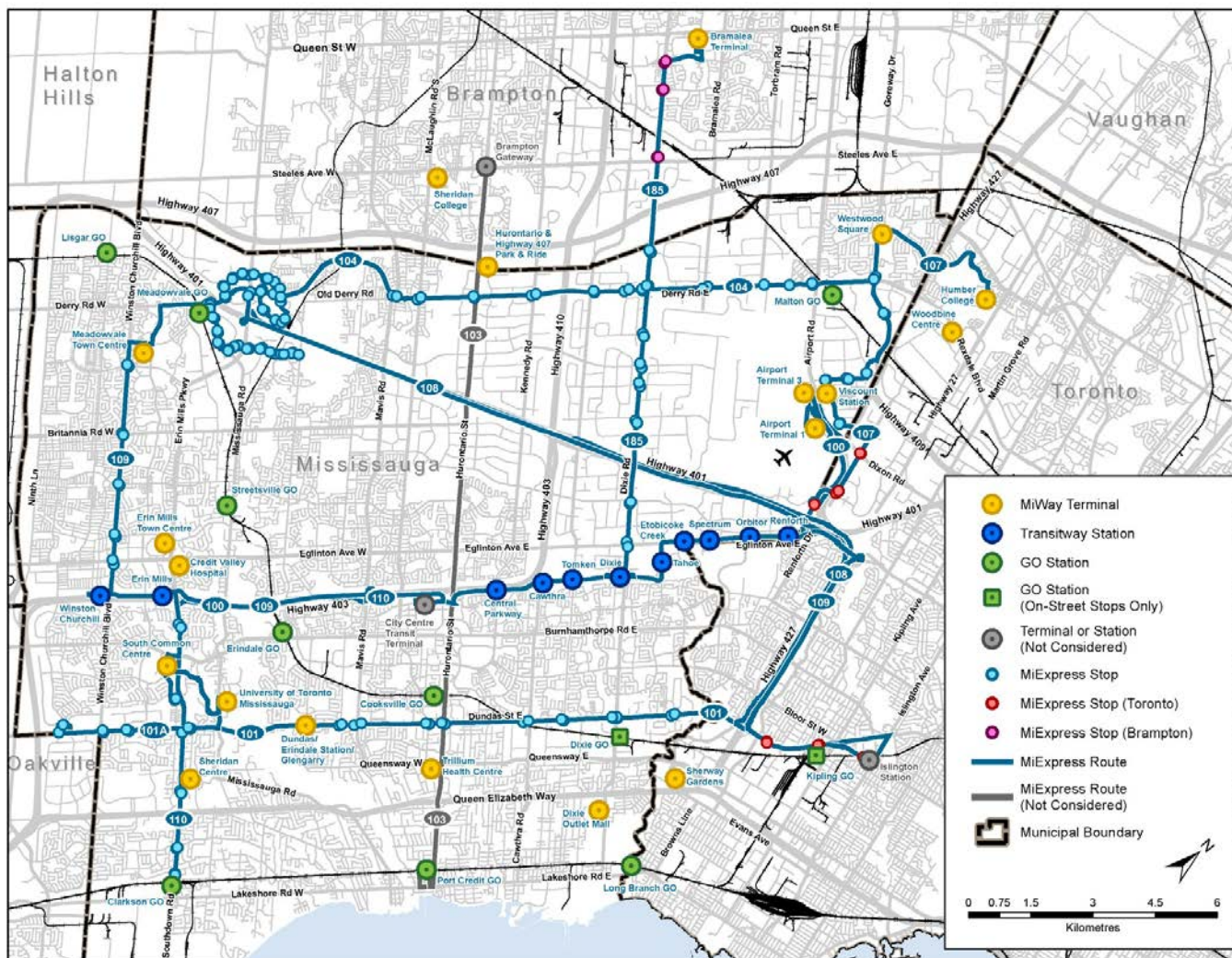
Feasibility Plans

How can we do
it?

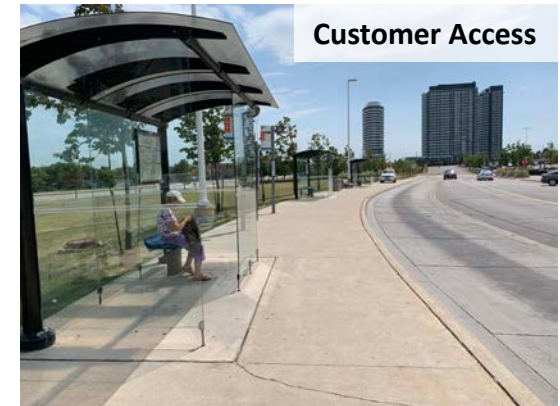
**Implementation
Strategy**

What is the cost
and timing?

Study Extents: MiWay Terminals and MiExpress Routes



Example of Terminal Issues/Challenges



Examples of Stop Issues/Challenges



Infrastructure Direction

Comprehensive barrier-free transit infrastructure that enhances the customer experience, attracts new passengers, and strengthens the connection between land use and transit.



Barrier-free infrastructure

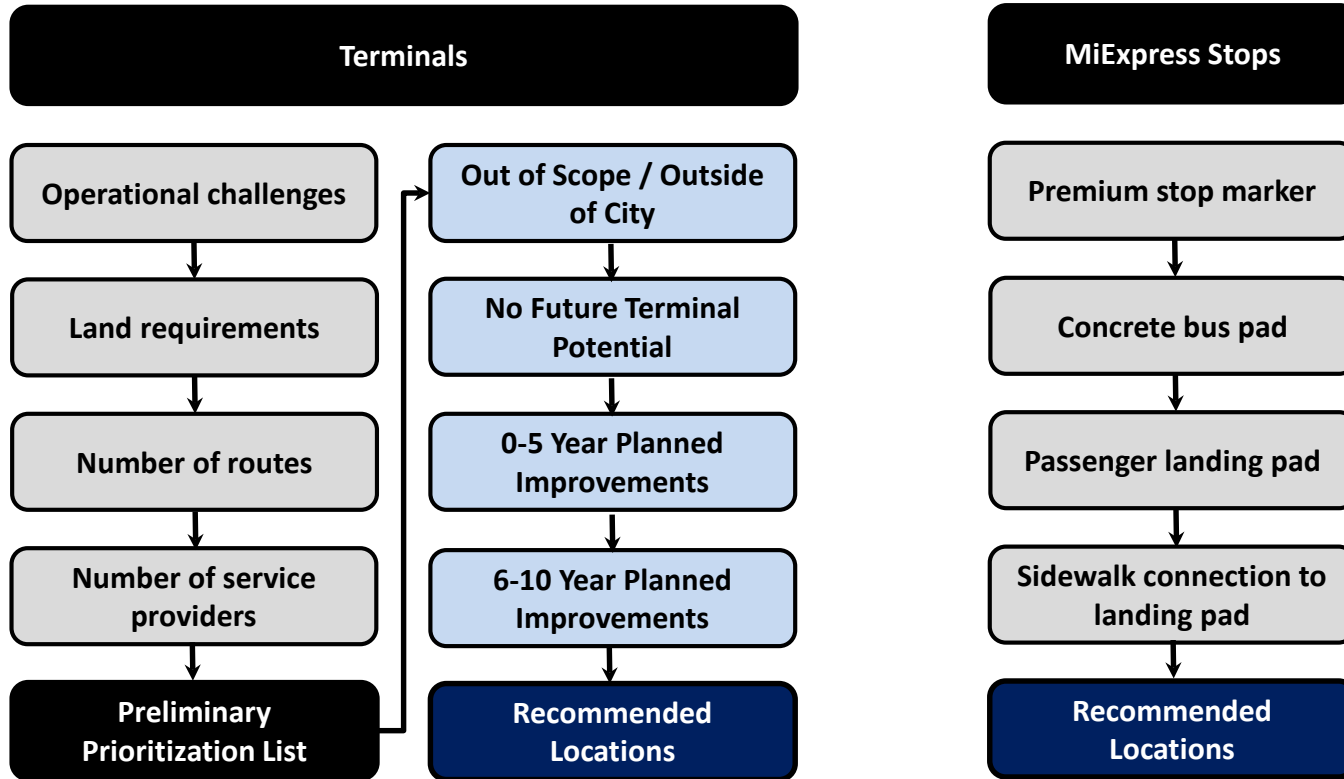


Enhanced customer experience

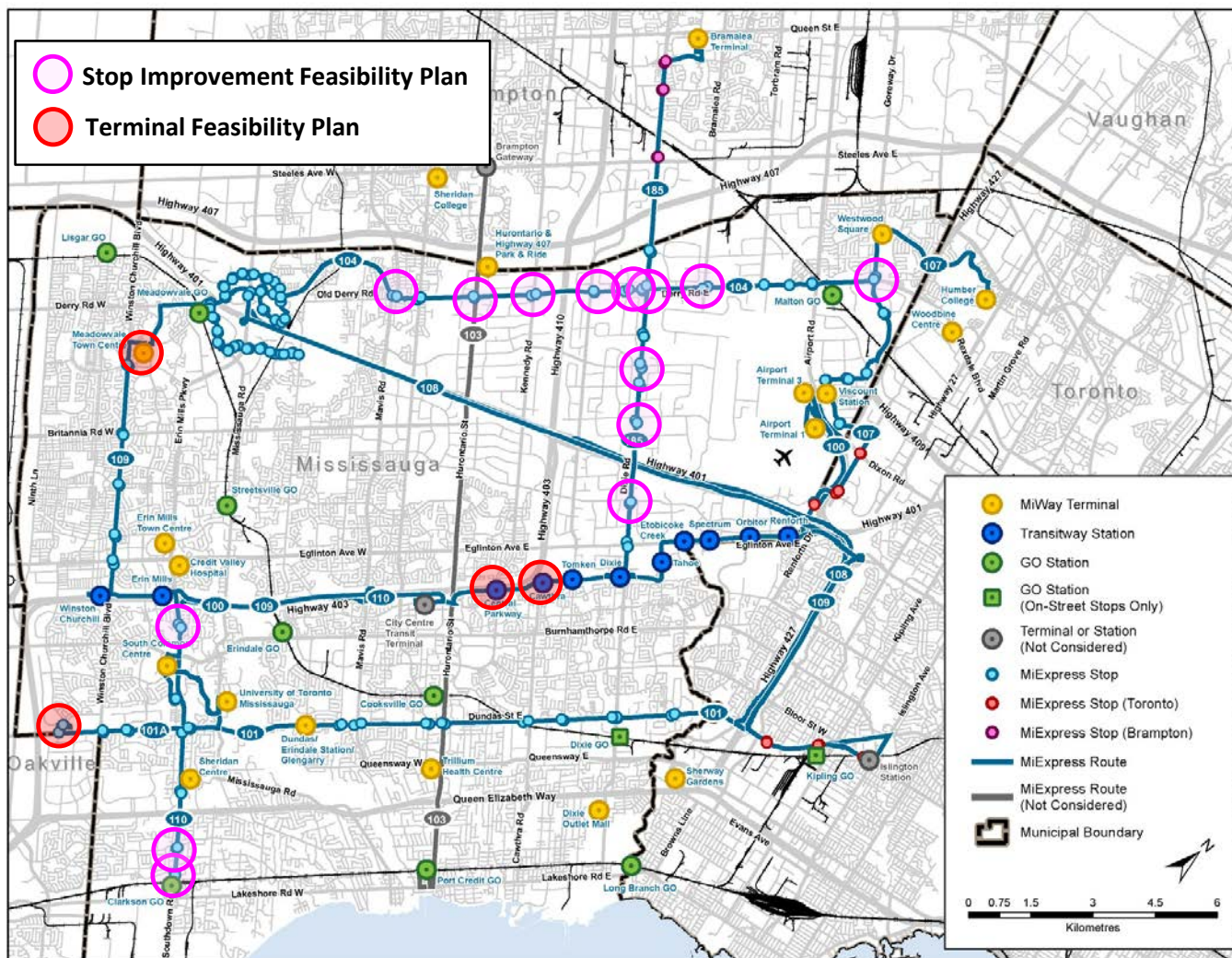


Land use and transit connections

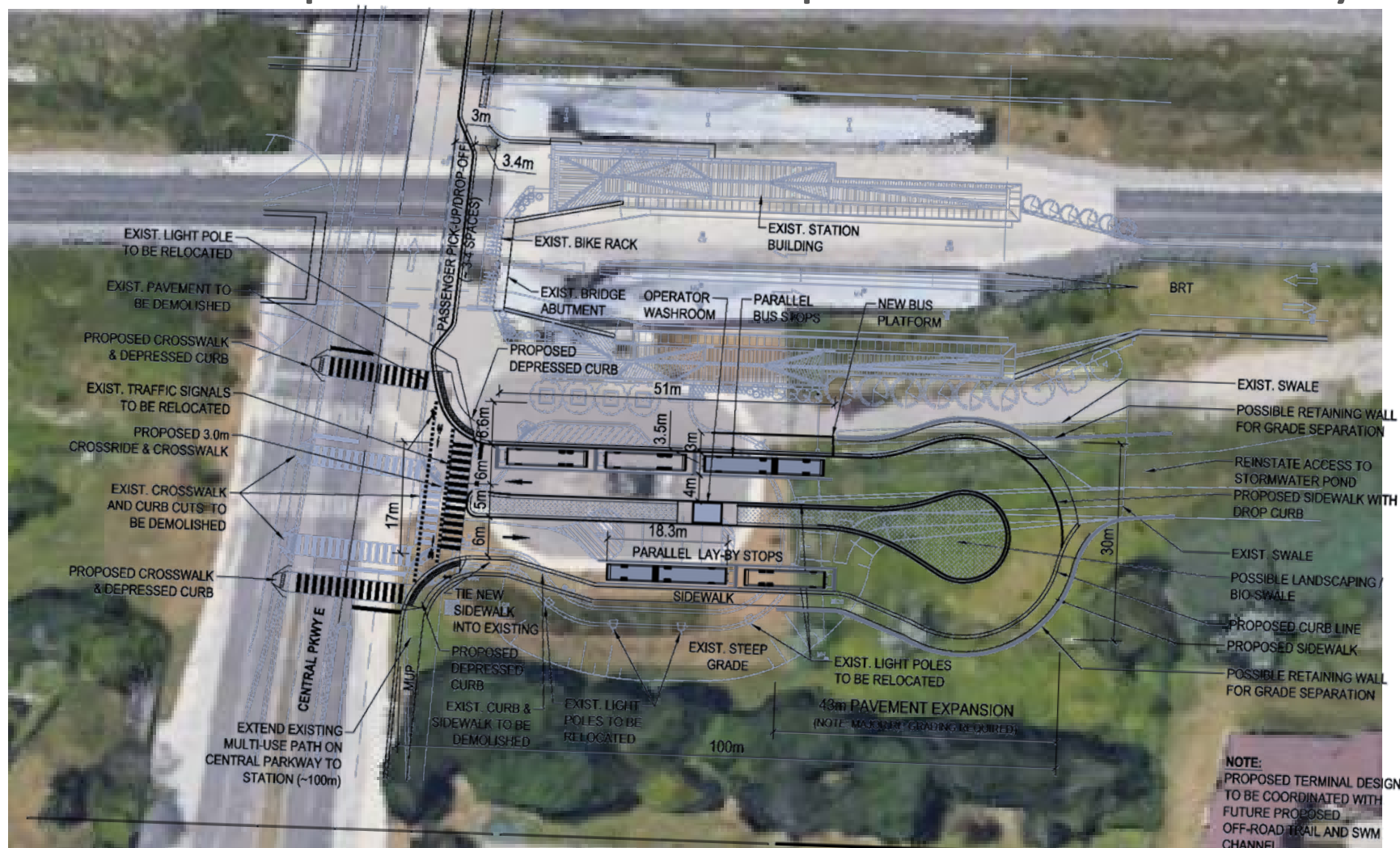
Evaluation of Opportunities



Recommendations: Stops and Terminals

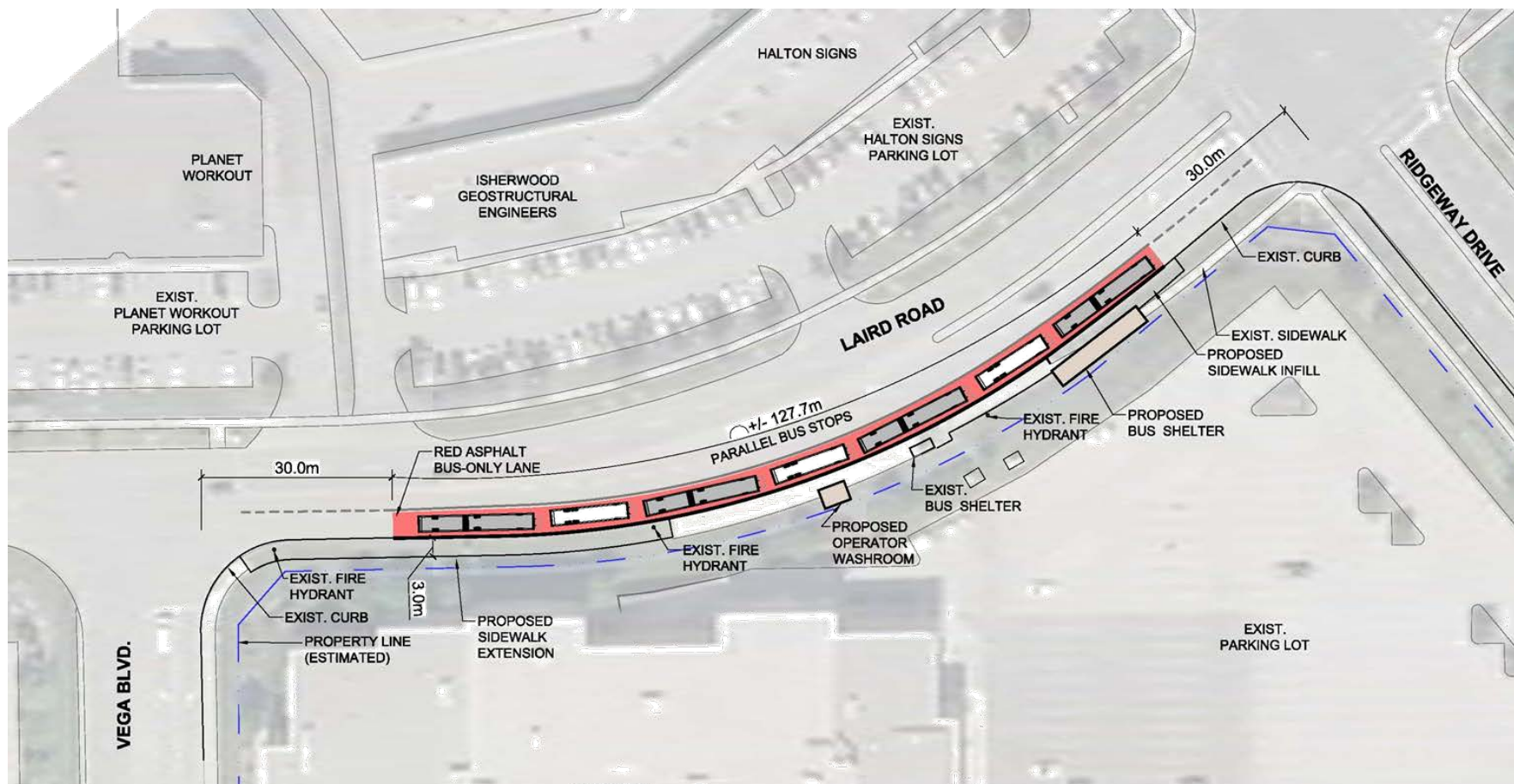


Terminal Improvement Concept: Central Parkway



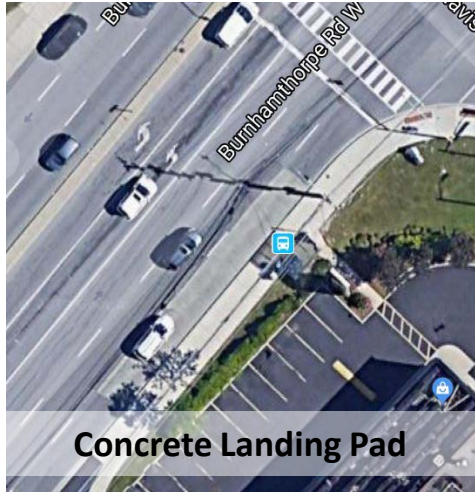
Note: Drawing not to scale and for visual purposes only

Terminal Improvement Concept: Laird/Vega



Note: Drawing not to scale and for visual purposes only

Stop Improvements



Concrete Landing Pad



Heated Shelter

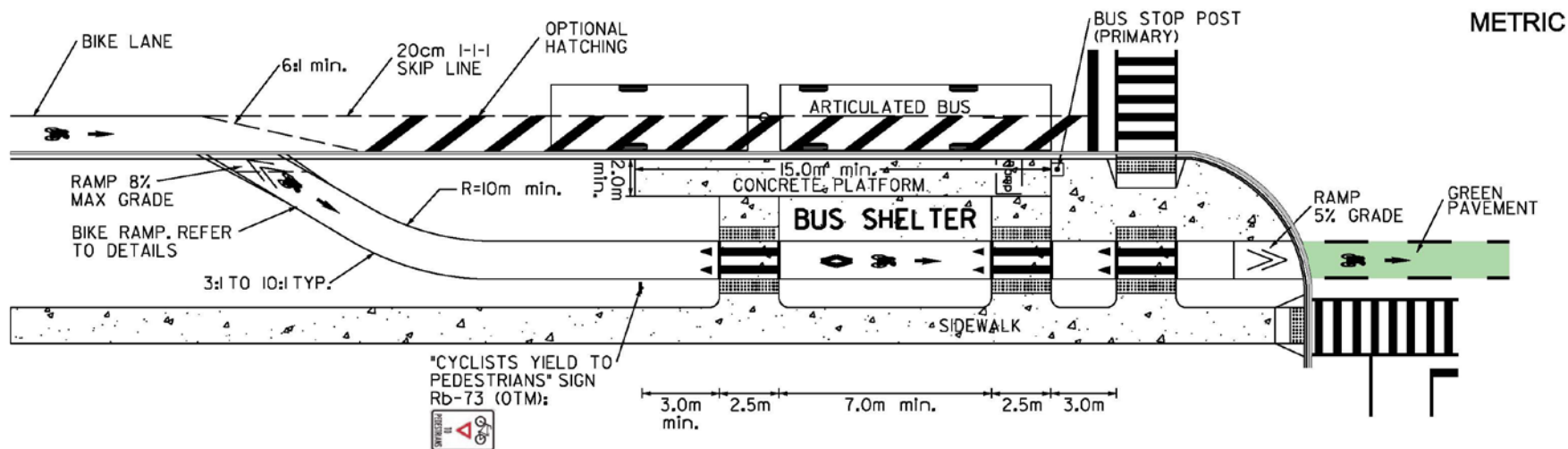
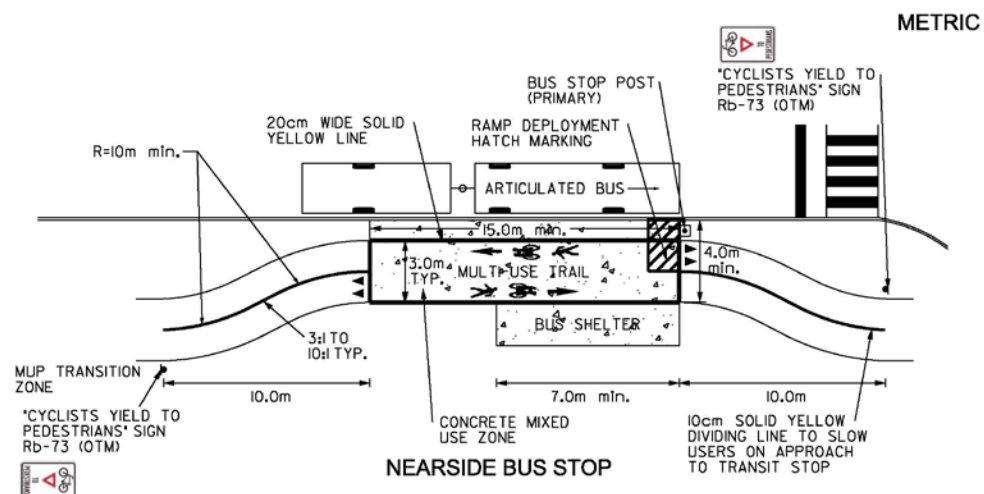


Queue Jump Lane



Red Paint Application

Standard Drawing Updates (Examples)



Next Steps

- Prepare detail design of concepts to be shovel ready when funding becomes available
- Integration/coordination with planned works (e.g., City of Mississauga, Region of Peel, MTO, property owners) to minimize construction impacts

Thank you!