



City of Mississauga
Grand Highland Park
FADS Committee Meeting

MEETING AGENDA

- Project Background
- Guiding Accessibility Principles
- Concept Plan & Park Program
 - Site Access & Connectivity
 - Site Furnishings
 - Surface Materials
 - Accessible Parking
 - Future Container Washroom
 - Activity Hub
 - Tiered Gathering Space
 - Community Garden
- Park Program Summary
- Project Timeline

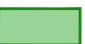


BACKGROUND

SITE CONTEXT

- New 11.5 ha (28 acre) park.
- Formerly the Grand Highland Golf Course before the site was purchased by the City in 2022 with the intent to redevelop for park use.
- Site is currently only accessed from a gated entrance at 376 Barondale Drive.
- Parkland is surrounded on all sides by residential properties.
- Within a 10 minute walking radius of five (5) schools and three (3) parklands.

LEGEND

-  Grand Highland Park Site
-  School Boundaries
-  Naturalized Areas
-  Parkland



BACKGROUND

INDIGENOUS HISTORY

- The parkland area was once a rich and vibrant Indigenous community, known as The Antrex Village Site.
- The park design strives to include commemoration and celebration of this village within the park features.

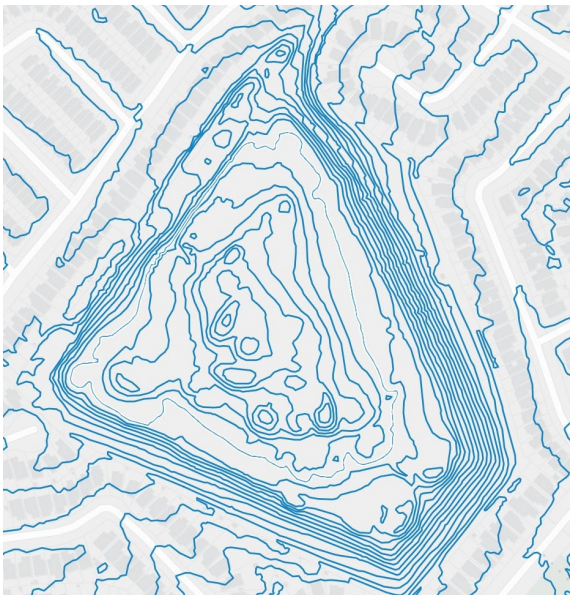


BACKGROUND

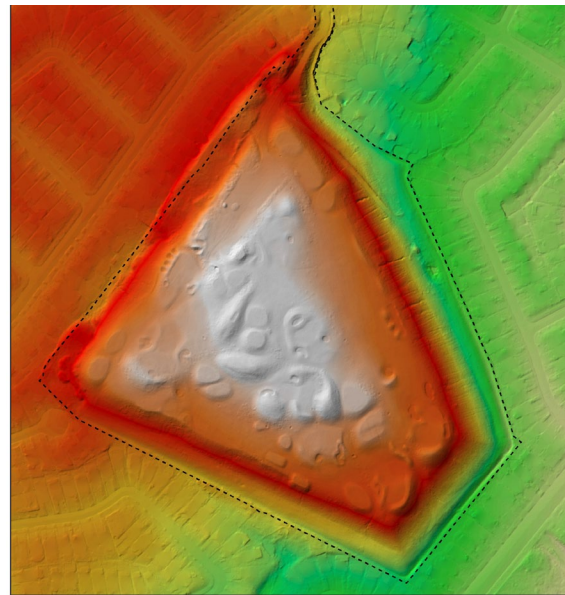
TOPOGRAPHY

1974 – 1981	Aggregate Pit & Fly Ash Landfill
1994	Developed into a 9-hole golf course
2022	Purchased by the City for parkland

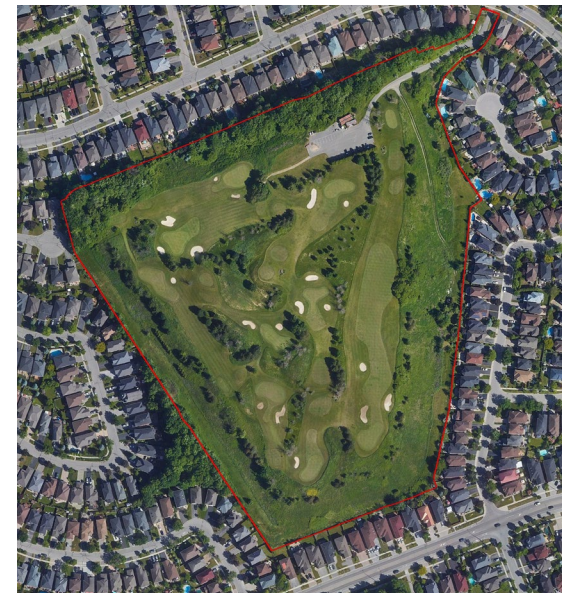
- The site is located on a large fly ash deposit (+/- 20m depth) with soil cap.
- The parkland is elevated above the surrounding residential properties and features undulating topography with significant slopes throughout.
- There is currently no accessible pedestrian access into the site (vehicular access only).



Contours



LiDAR



Aerial Image



GUIDING ACCESSIBILITY PRINCIPLES

- Accessibility for Ontarians with Disabilities Act (AODA)
 - Customer Service Standards
 - Design of Public Spaces Standards (Built Environment)
- City of Mississauga Multi-Year Accessibility Plan
- 2015 City of Mississauga Facility Accessibility Design Standards



CONCEPT PLAN

PROGRAM ELEMENTS

- ① PRIMARY PARK ENTRANCE
- ② SECONDARY PARK ENTRANCE
- ③ PARKING LOT
- ④ INTERNAL ROAD / VEHICLE ACCESS
- ⑤ ENTRY PLAZA WITH WAYFINDING SIGNAGE
- ⑥ FUTURE CONTAINER WASHROOM
- ⑦ SHADE STRUCTURE
- ⑧ 'ACTIVITY HUB'
PLAYGROUND, SAND PLAY, SPRAY PAD, AND GATHERING SPACE
- ⑨ DISC GOLF
- ⑩ TIERED GATHERING SPACE
- ⑪ OPEN LAWN FOR PASSIVE RECREATION
- ⑫ PICNIC AREA
LOOK-OUT POINT

LEGEND

- | | |
|-------------------|------------------------|
| ● ASPHALT PAVING | ● ARTIFICIAL TURF |
| ● CONCRETE PAVING | ● LIMESTONE SCREENINGS |
| ● SPRAY PAD | ● NATURALIZED AREA |
| ● PLAYGROUND | ● SODDED AREA |
| ● SAND PLAY | ● OPEN LAWN |



SITE ACCESS & CONNECTIVITY

WALKWAYS



Site Access

- Accessible pedestrian access proposed from the existing park entrance at Barondale Drive (max. 5% slope).
- Secondary pedestrian access to be introduced at Woodtrail Court (max. 5% slope).

Lighting

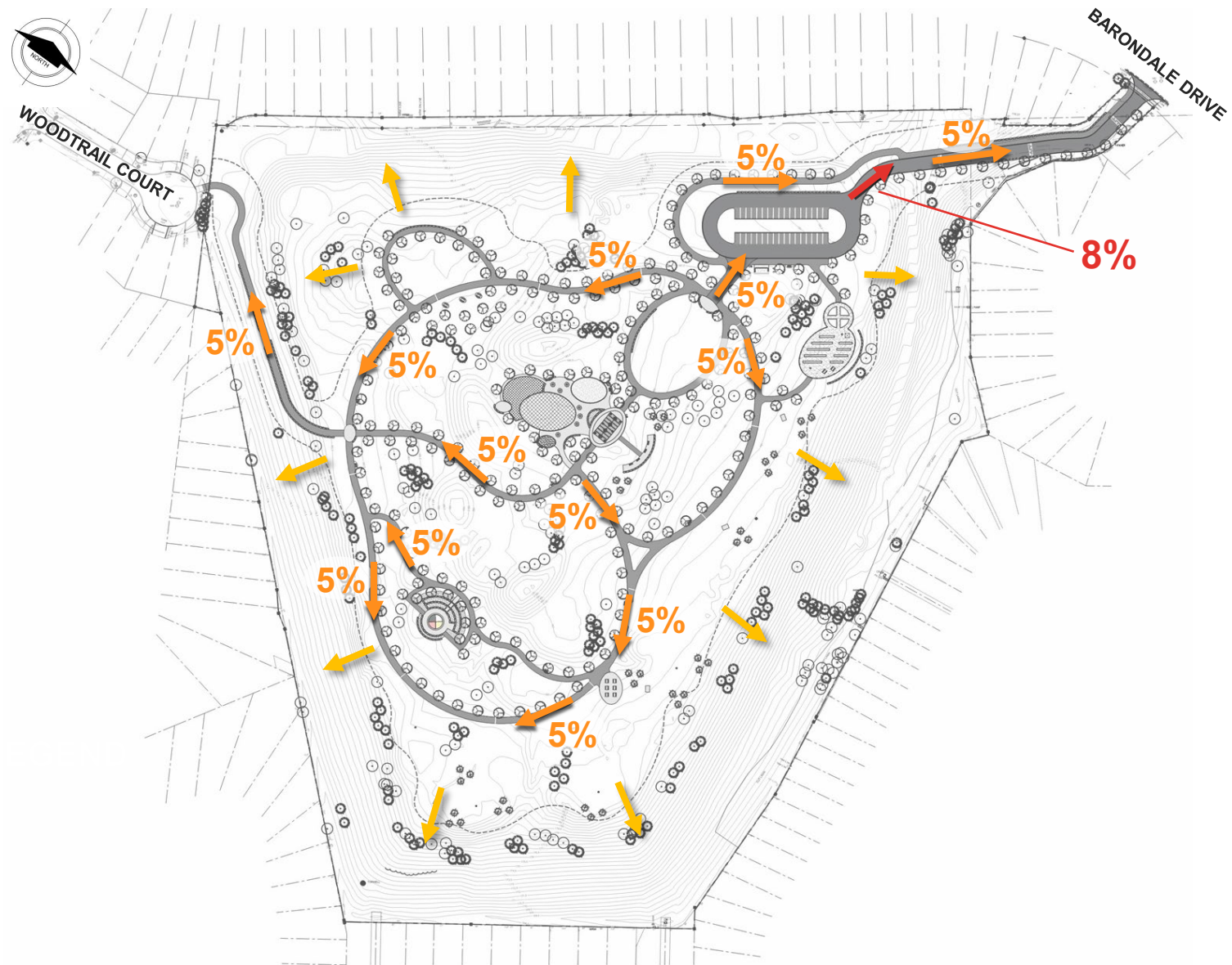
- Lighting will be provided along primary walkways, internal road, and parking lot.

Materials

- All primary walkways shall be 3.0m wide. Secondary walkways shall range between 2.5m – 3.0m wide.
- All primary and secondary walkways to be asphalt paving.

SITE ACCESS & CONNECTIVITY

WALKWAY SLOPES & SITE GRADING

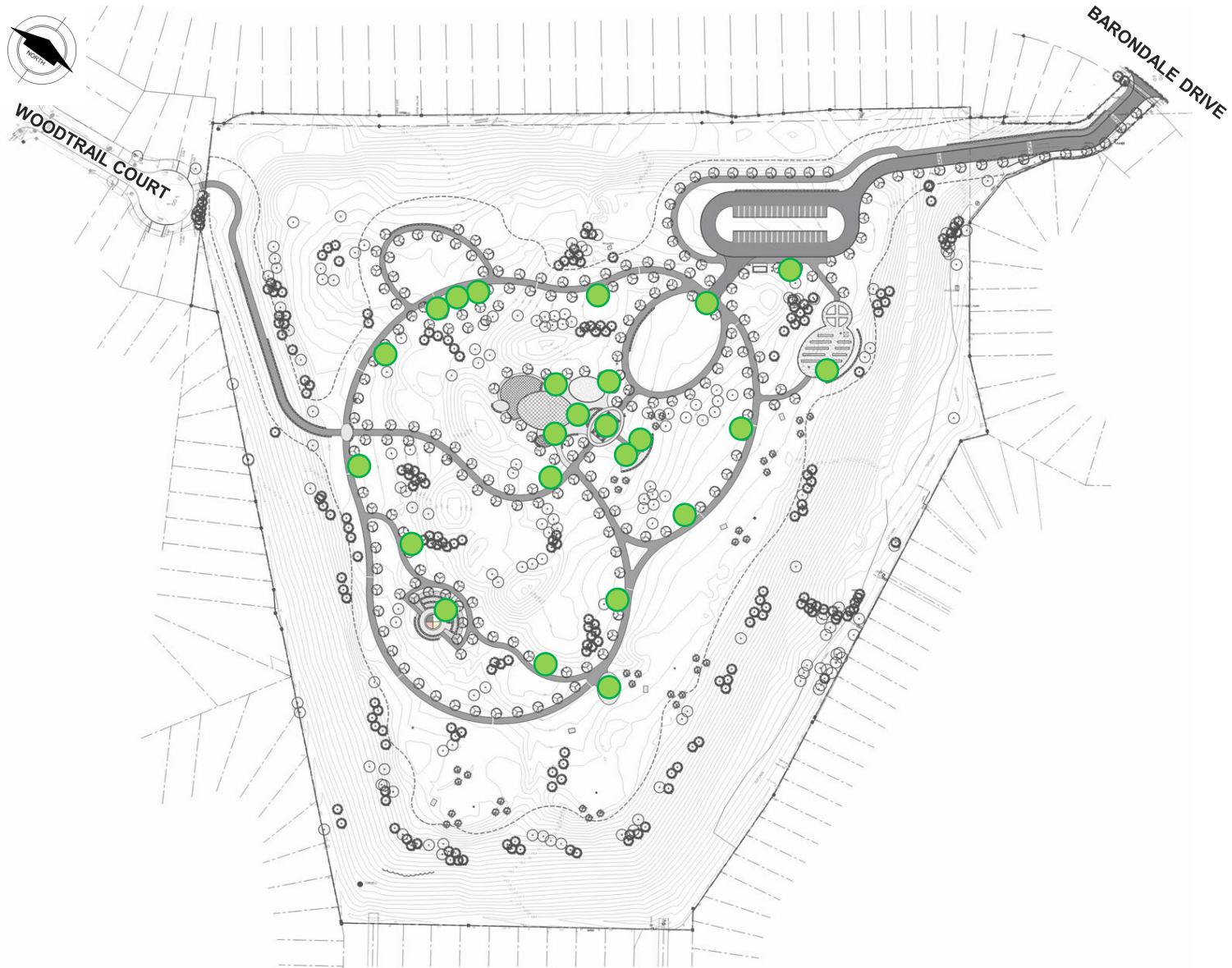


Slopes

- Walkways slope between 1.0% to 5.0%, with a 2% typical cross slope for optimal drainage.
- Portion of vehicular access route will be sloped at 8% as required to minimize disturbance to fly ash.

SITE ACCESS & CONNECTIVITY

REST LOCATIONS

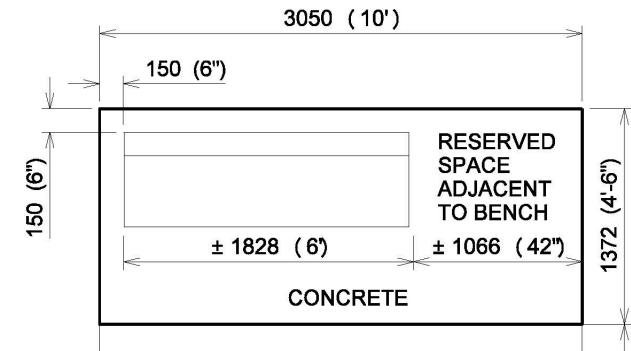


Legend:

- Bench or gathering table seating opportunity

Rest Locations

- City standard bench with back will be placed every 50m-90m maximum along walkways where feasible given the site's topography and grading constraints.
- Bench pads to include extensions.



SITE FURNISHINGS

- **Accessible Gathering Tables**
- City Standard **Accessible Picnic Tables**
- City Standard **Benches with Backs and Arm Rests**
- Grand Highland Park will exceed the FADS 20% minimum requirement of accessible tables on site



SURFACE MATERIALS



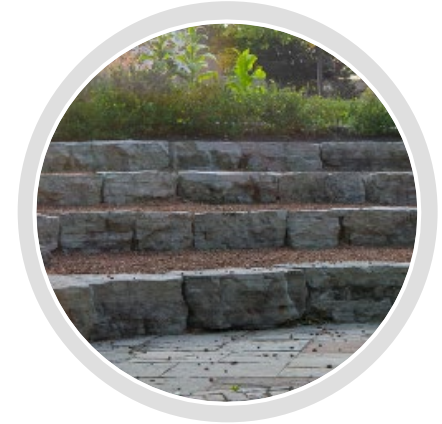
Asphalt Paving
WALKWAYS AND TRAILS



Concrete Paving
PLAZA AND WALKWAYS



Sandblasted Concrete
SPRAY PAD



Armoustones
ACTIVITY HUB & TIERED
GATHERING SPACE



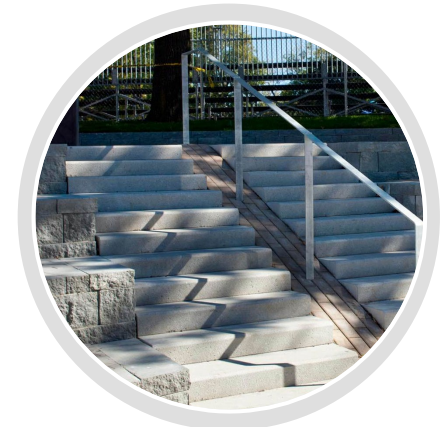
**Wood Fiber & Rubber
Safety Surfacing**
PLAYGROUND PRECINCT



Artificial Turf
PLAYGROUND BERM



Play Sand
SAND PLAY PRECINCT



**Concrete Stairs with
Metal Hand Railings**
TIERED GATHERING SPACE

* Hand railings shall conform to OBC requirements.

ACCESSIBLE PARKING

VEHICULAR ACCESS

Existing number of parking stalls:	38
Proposed number of parking stalls:	40
Proposed number of accessible parking stalls:	2

- One (1) Type A and one (1) Type B stall proposed with 1.5m wide access aisle.

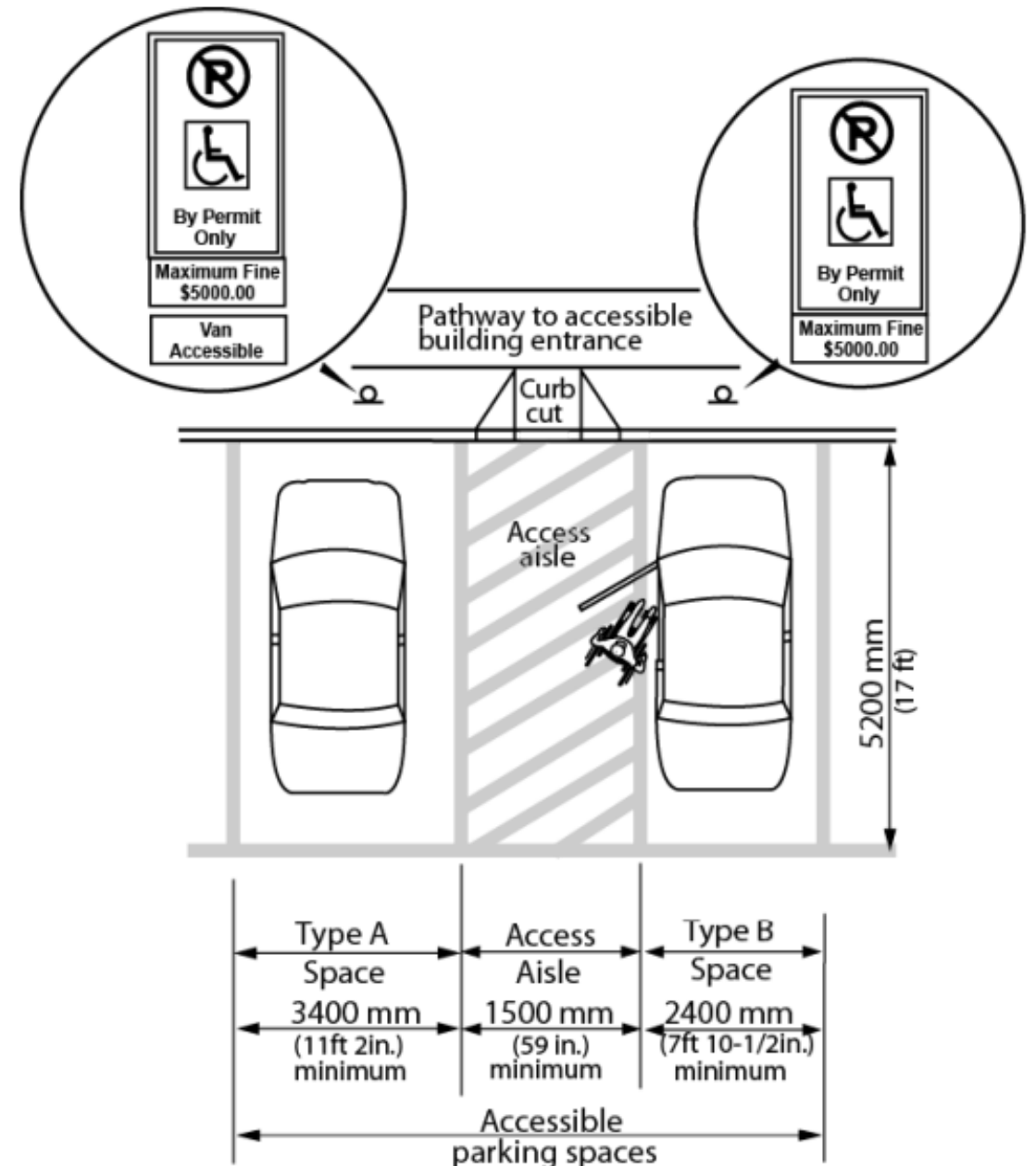
Flush Surfaces

- Curb depressions will be implemented where necessary.



Tactile Warning Strips

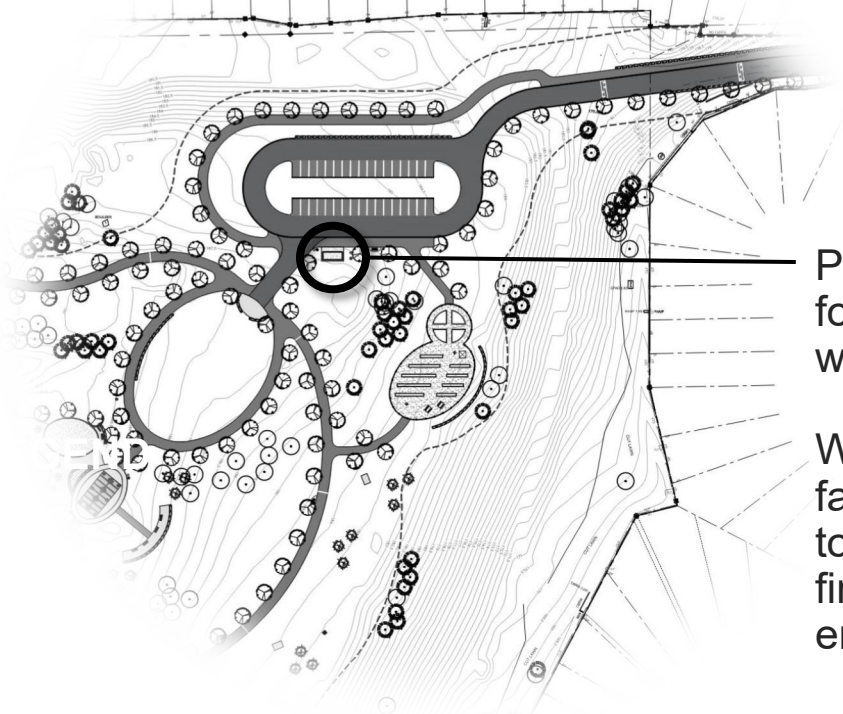
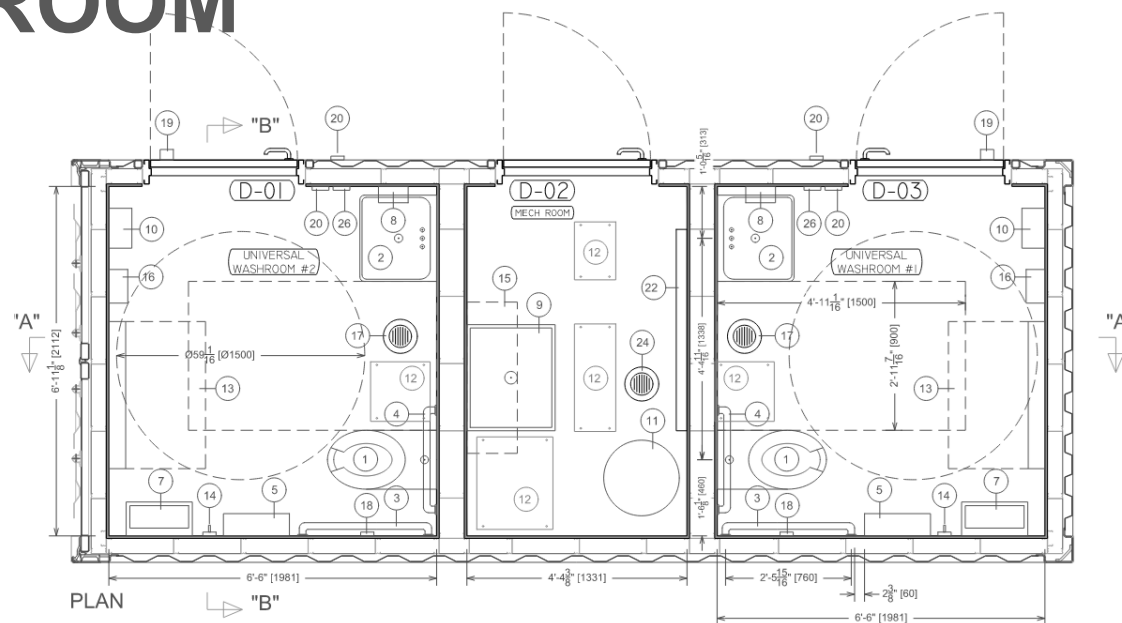
- Parking lots, curb depressions, crossings with tactile warning strips will be implemented.



FUTURE CONTAINER WASHROOM

DESIGN INTENT AND FLOOR PLAN

- Included in the project scope of work is making provisions for a future container style washroom.
- It is intended that the design will replicate the container washroom at **Tobias Mason Park**.
- Future container washroom to include three (3) washrooms in total, with two (2) being universal / accessible washrooms.



Proposed location for future container washroom.

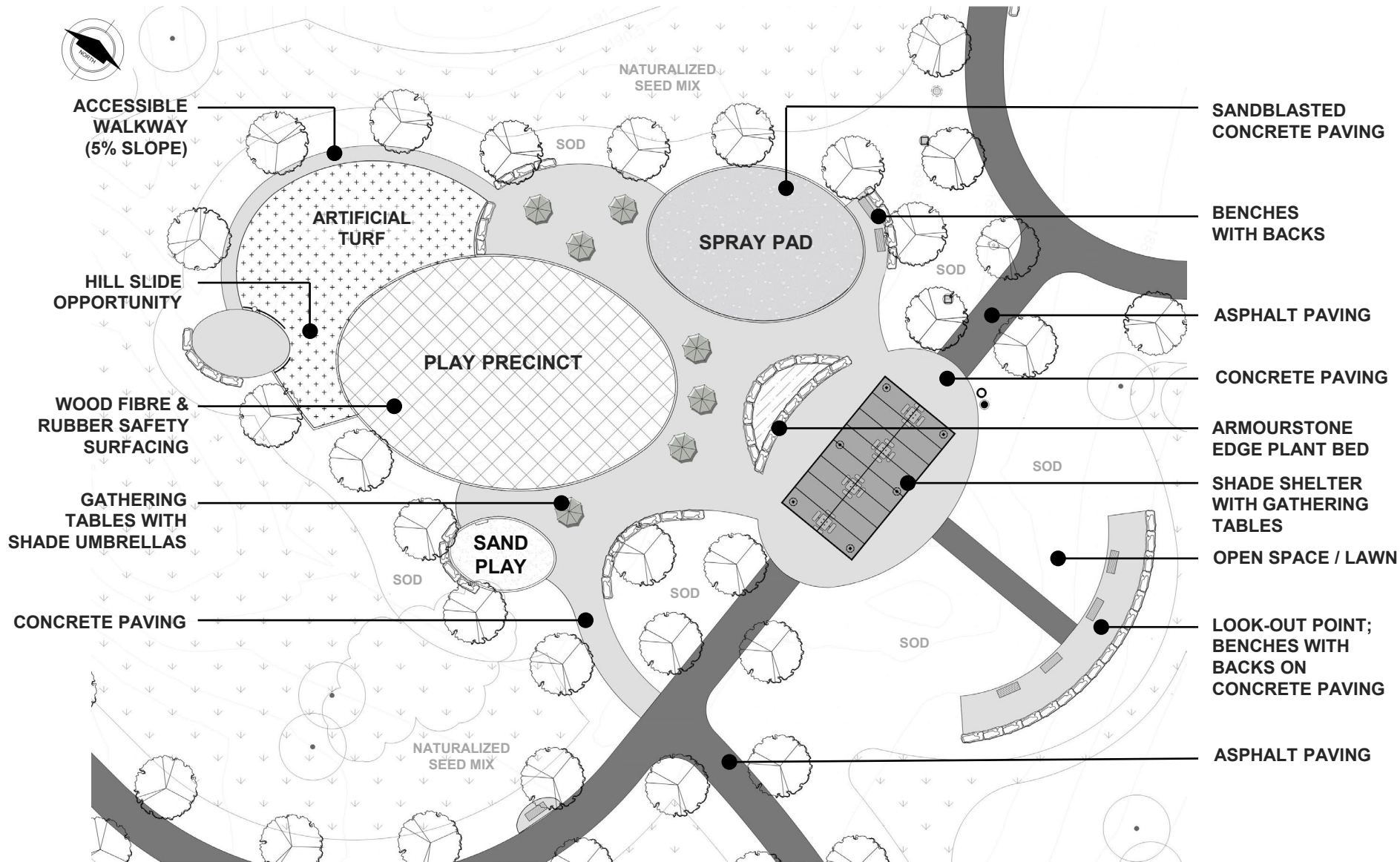
Washroom to be facilitated adjacent to the parking lot for fire services and emergency access.



Tobias Mason Park Example
7370 Watergrove Road, Mississauga Ontario.

ACTIVITY HUB

LANDSCAPE PLAN



SAMPLE SPRAY PAD ELEMENTS



ARTIFICIAL TURF PLAYGROUND BERM



SAMPLE SAND PLAY EQUIPMENT

SANDBLASTED
CONCRETE PAVING

BENCHES
WITH BACKS

ASPHALT PAVING

CONCRETE PAVING

ARMOURSTONE
EDGE PLANT BED

SHADE SHELTER
WITH GATHERING
TABLES

OPEN SPACE / LAWN

LOOK-OUT POINT;
BENCHES WITH
BACKS ON
CONCRETE PAVING

ASPHALT PAVING

ACCESSIBLE
WALKWAY
(5% SLOPE)

ARTIFICIAL
TURF

SPRAY PAD

PLAY PRECINCT

SAND
PLAY

HILL SLIDE
OPPORTUNITY

WOOD FIBRE &
RUBBER SAFETY
SURFACING

GATHERING
TABLES WITH
SHADE UMBRELLAS

CONCRETE PAVING

NATURALIZED
SEED MIX

NATURALIZED
SEED MIX

SOD

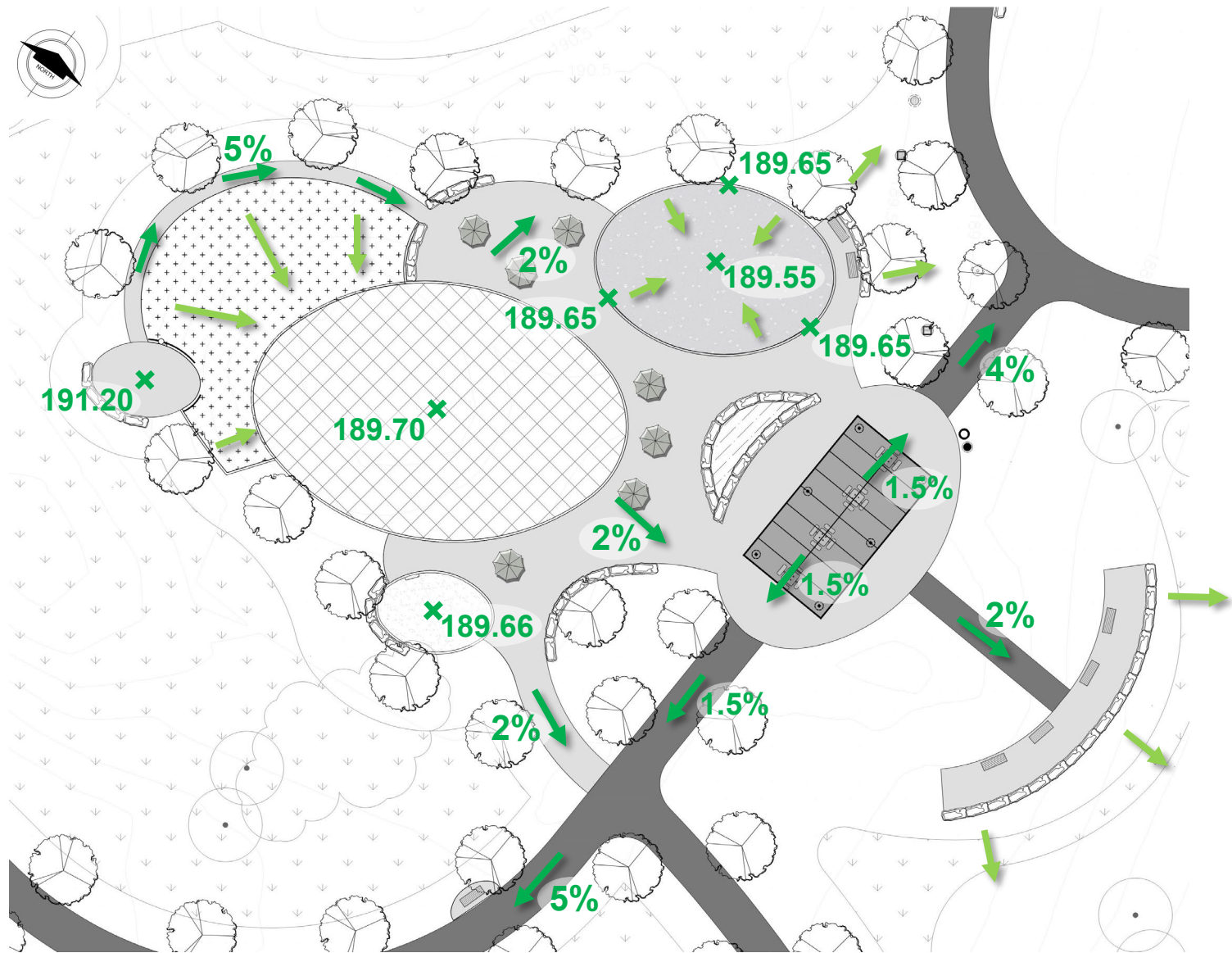
SOD

SOD

SOD

ACTIVITY HUB

GRADING PLAN



3D RENDERING

ACTIVITY HUB

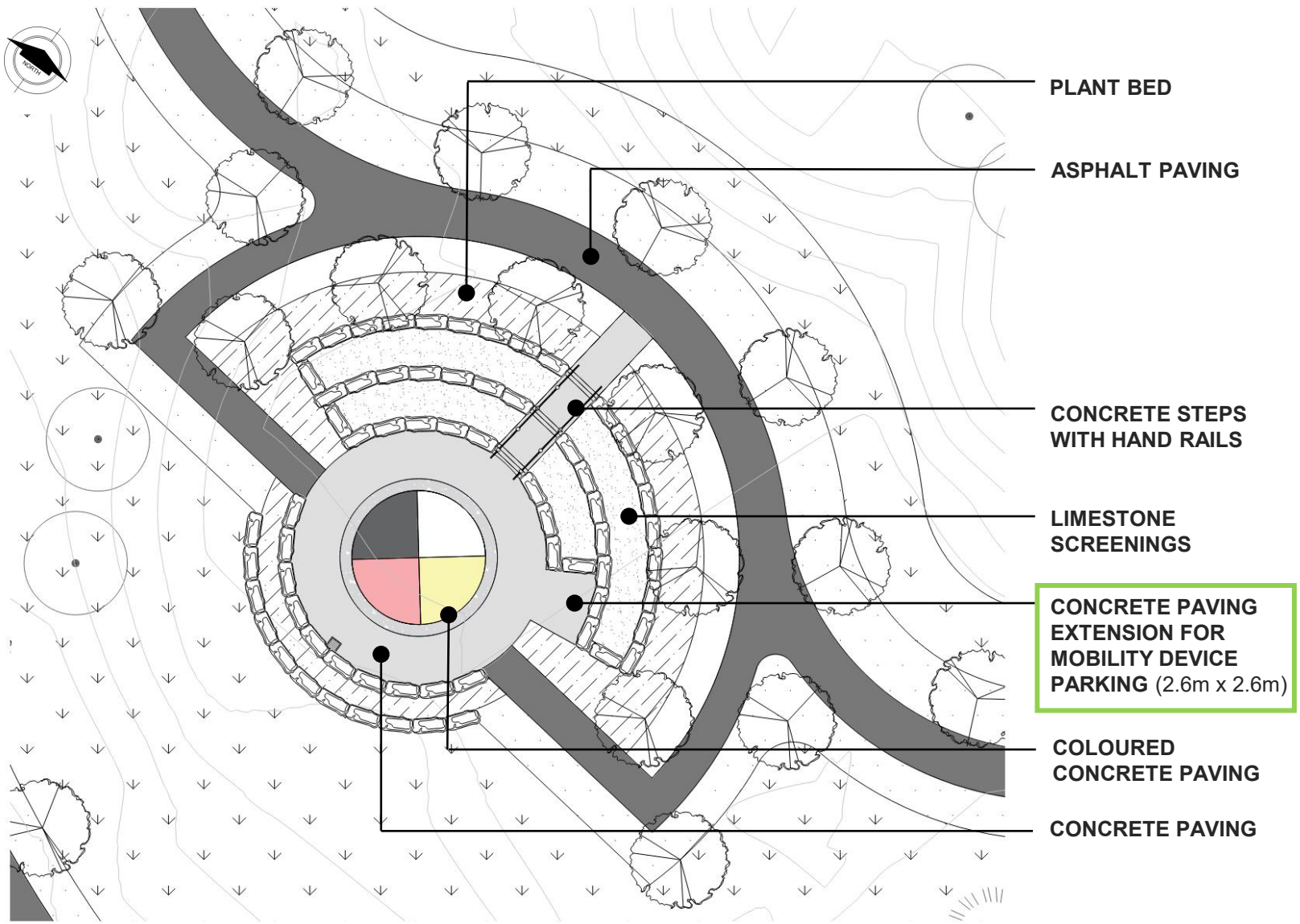
PLAYGROUND & SPRAY PAD COMPONENTS

- All playground and spray pad equipment components must comply with CSA Standards (CSA-Z614-14, Annex H).
- Play equipment shall aim to;
 - Offer **independent play** by users with disabilities.
 - Promote **collaborative play** between all users.
 - **Consider both physical and sensory disabilities** such as mobility, hearing (auditory stimulation), low or no vision (colour contrast), reaching / dexterity disabilities (fine motor skills development & textures for tactile stimulation).
 - Offer **opportunities for movement** (vestibular stimulation).
 - Offer **quiet retreat spaces** (to calm over stimulation).



TIERED GATHERING SPACE

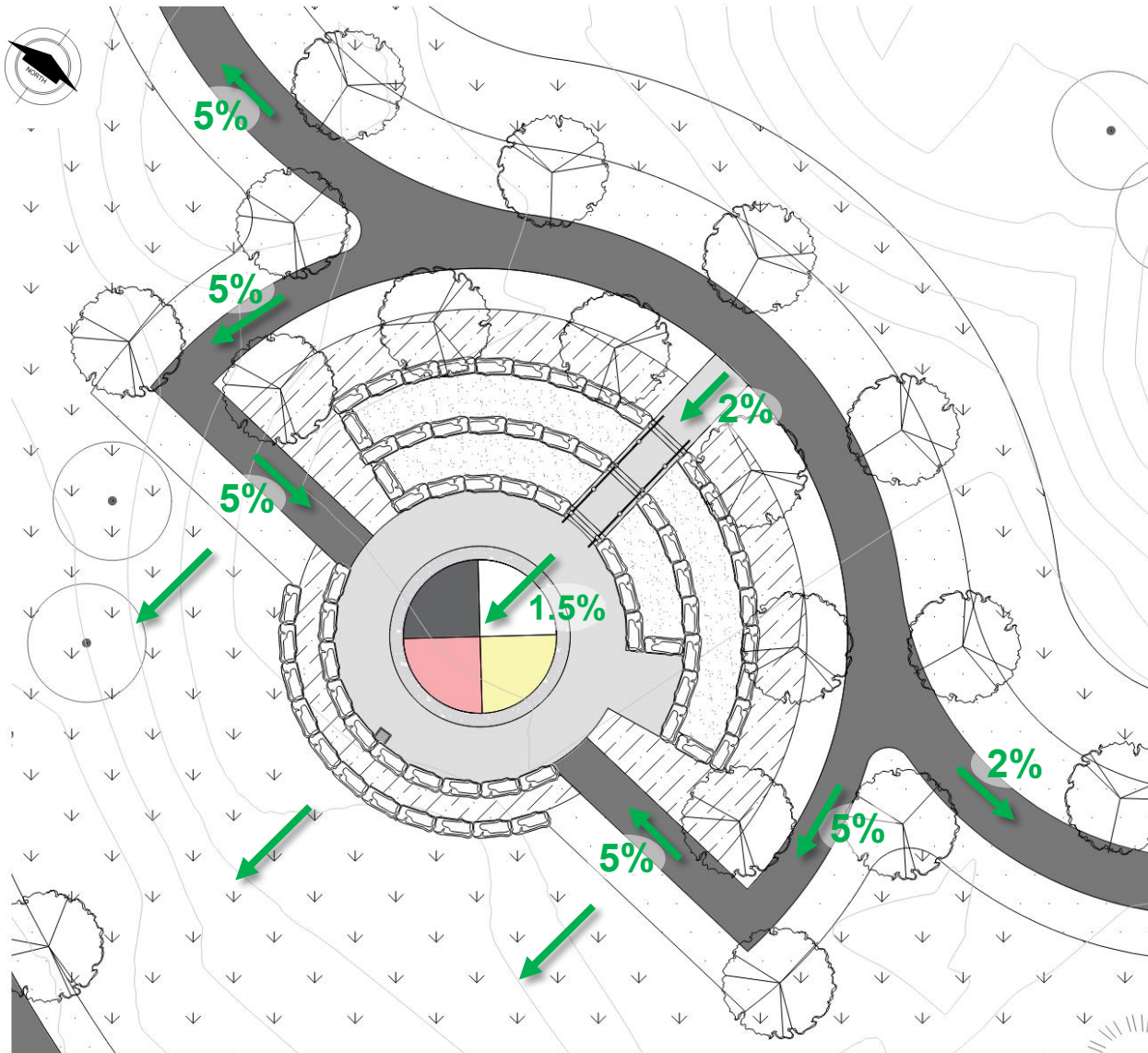
LANDSCAPE PLAN



DESIGN INTENT IMAGERY

TIERED GATHERING SPACE

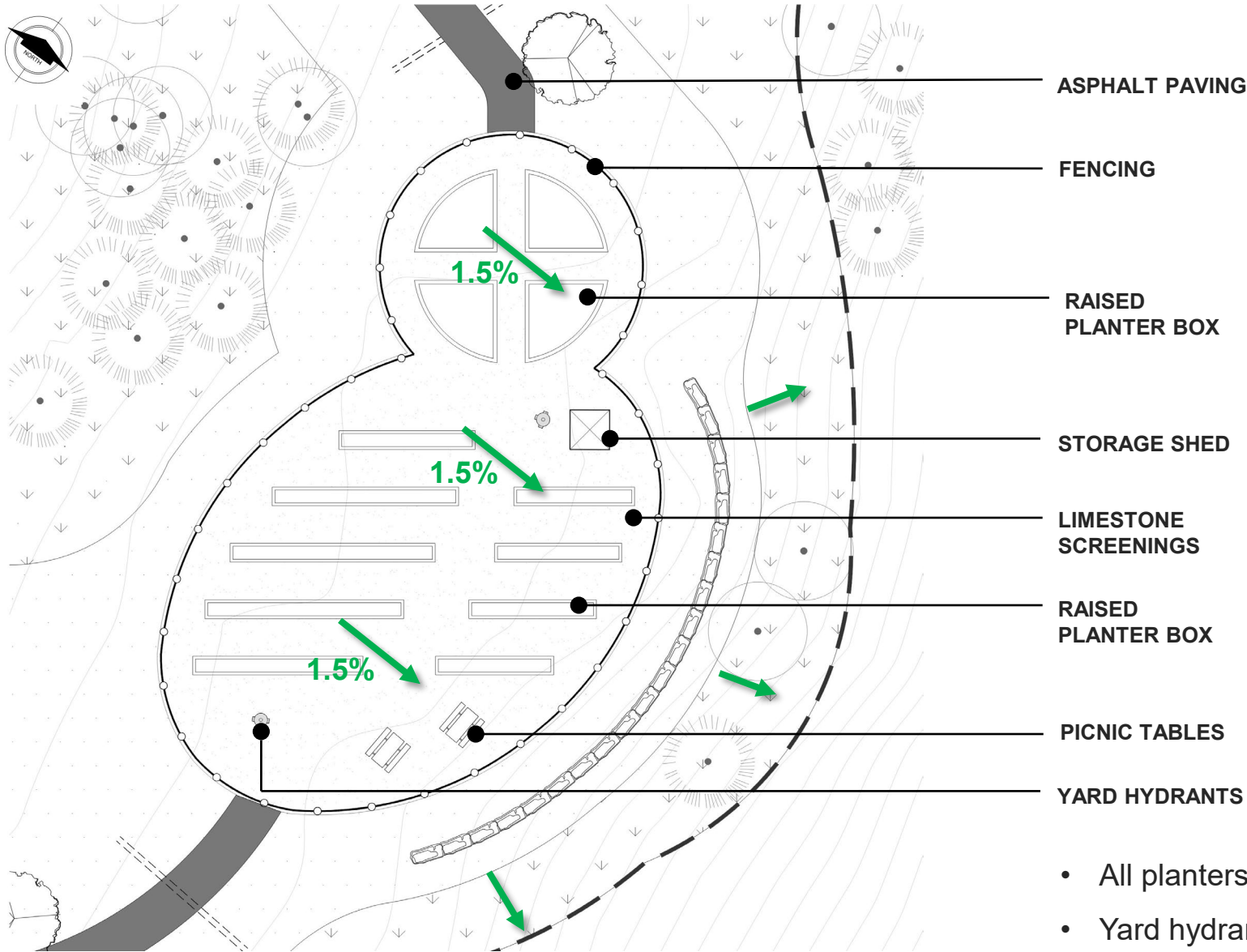
GRADING PLAN



3D RENDERING

COMMUNITY GARDEN

LANDSCAP & GRADING PLAN



DESIGN INTENT IMAGERY

- All planters to be in raised boxes (75mm height).
- Yard hydrants to be 600mm (24") height typ.

ACCESSIBILITY FEATURES:

• Park & Trails

- Accessible site furnishings.
- Bench pad extensions.
- Maximum 5% slopes on pedestrian walkways.
- Frequent rest stops & seating opportunities.
- Accessible parking stalls (Type A & B).
- Primary walkway lighting.
- 2.5m – 3.0m wide walkways.
- Provision for accessible washroom facilities.
- Use of curb depressions and tactile warning strips at road crossings.

• Playground

- Combination of engineered wood fibre and rubber safety surfacing for accessible access to play elements.
- Accessible playground elements.

• Spray Pad

- Sand blast / textured concrete paving.
- Roll in roll out access.
- Accessible spray pad elements.

• Tiered Gathering Space

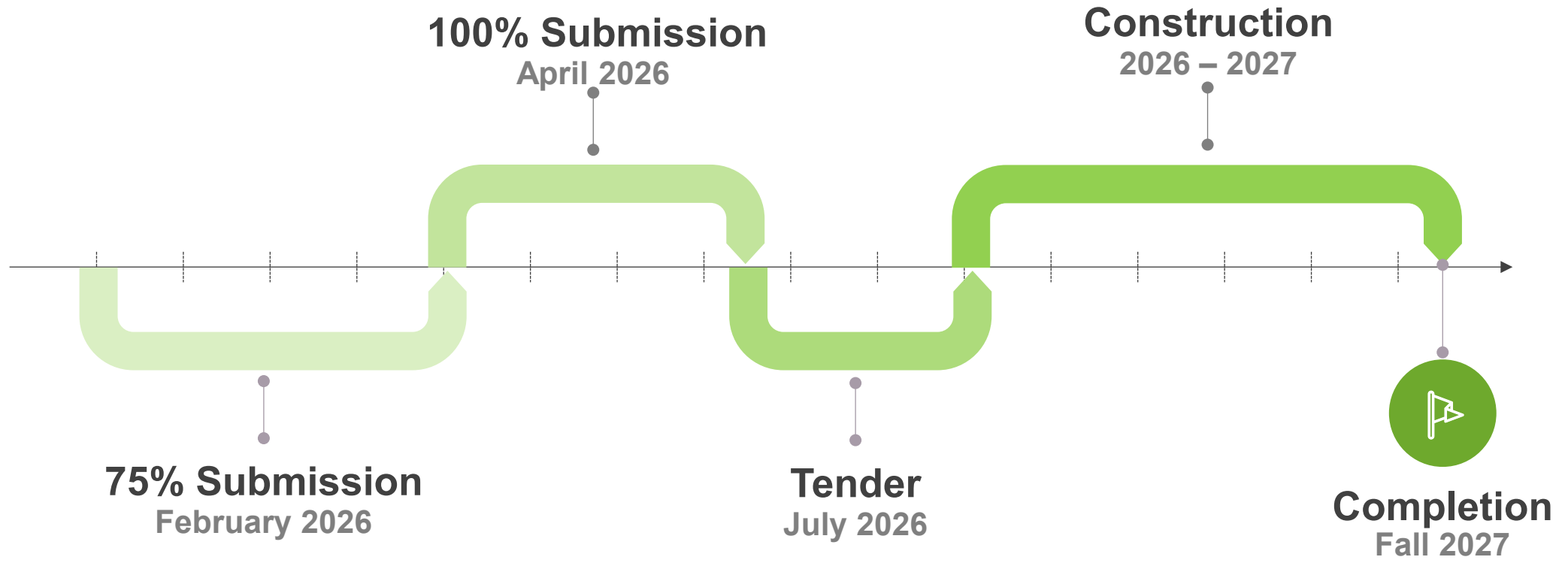
- Roll in roll out access
- Concrete extension for mobility device parking.

• Community Garden

- Accessible site furnishings.
- Raised planter boxes.



PROJECT TIMELINE





Thank You

Questions?