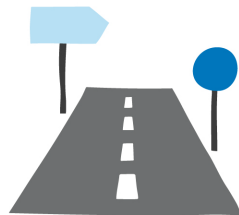


Transit Winter Maintenance

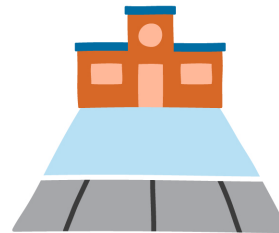
Transit Advisory Committee
March 3, 2026



What we clear



5,700
lane km of
roads



1,550
km of priority
sidewalks



900
km of secondary
sidewalks



3,300
bus
stops



127
km of roadside
multi-use trails



73
km of on-street
bike lanes



134,000
residential driveway
windrows

Transit Stop Winter Maintenance

- 3300 Bus Stops
- 192 pieces of equipment dedicated to clearing transit stops from November to April
- Tractor loaders and material trucks

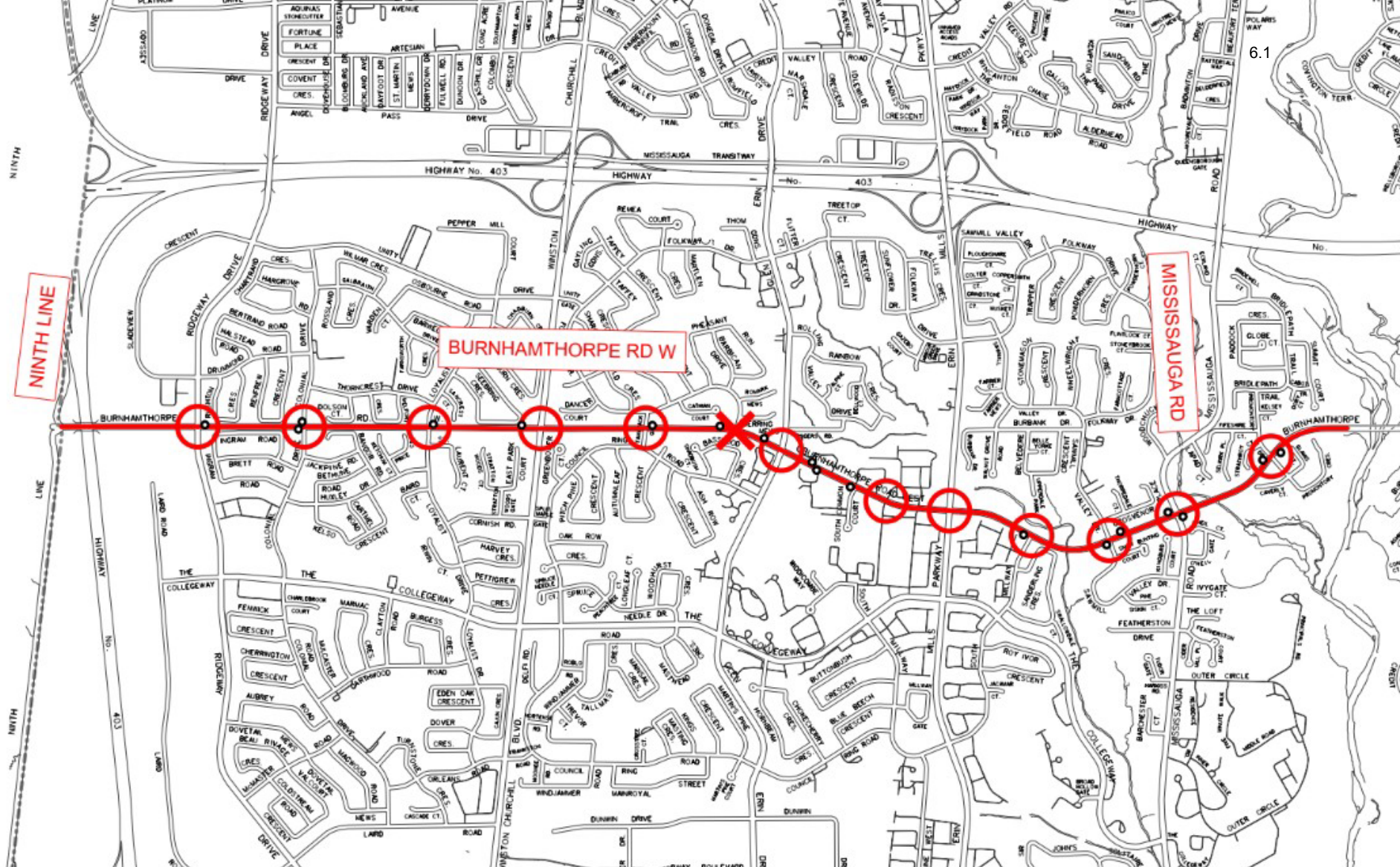
Transit Stops – Level of Service

Accumulation	Service Level Target
Less than 5 cm	Salted within 12 hours
5-15 cm	Plowed and salted within 12 hours
15-30 cm	Plowed and salted within 24 hours
Greater than 30 cm/back-to-back storms	Plowed and salted more than 24 hours

Priority service level after snow has stopped

Transit Stops – Level of Service





MISSISSAUGA

Transportation and Works

2021-2029 Bus Stop Routes **Mavis Yard**

- Bus Routes
- Bus Stop
- Intersection
- Crosswalk
- Pedestrian Island
- Rail Crossing Swing Gate

2-BUS-04

LIMA **2-604**

Crosswalks: 1 Bus Stops: 18
 Intersections: 12 Islands: 0
 Swing Gates: 0

Transit Stop Winter Maintenance

Operational Challenges

- Safety of public, motorists and operators
- Rework resulting from roadway plowing activities
- Snow storage
- Timing of snowfall
- Salt application

Transit Terminal Winter Maintenance

- City Centre Transit Terminal
- Westwood Mall Transit Terminal
- BRT Stations and Parking Lots

Transit Terminal Winter Maintenance

Operational Challenges

- Safety of the public
- Timing of winter events
- Elevated service standards
- Snow storage

THANK YOU!

